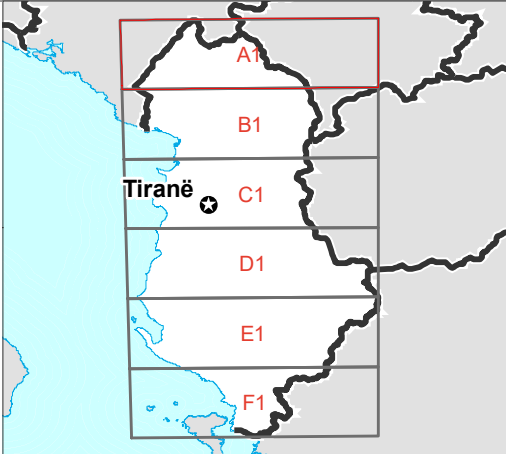








Albania: Average Precipitation for February
- Sheet A1




Settlements

-  **CAPITAL**
-  City

Borders

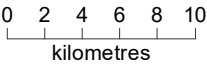
-  INTERNATIONAL
-  COUNTIES
-  MUNICIPALITIES
-  ADMIN 3

Precipitation (mm)



40.1 - 50	50.1 - 60	60.1 - 70	70.1 - 80	80.1 - 90	90.1 - 100	100.1 - 110	110.1 - 120	120.1 - 130	130.1 - 140	140.1 - 150	150.1 - 160	160.1 - 170
-----------	-----------	-----------	-----------	-----------	------------	-------------	-------------	-------------	-------------	-------------	-------------	-------------

Map shows the average precipitation for February in Albania.



Data sources
GADM, SRTM, OpenStreetMap, WorldClim

Created 16 Dec 2019 / UTC+01:00

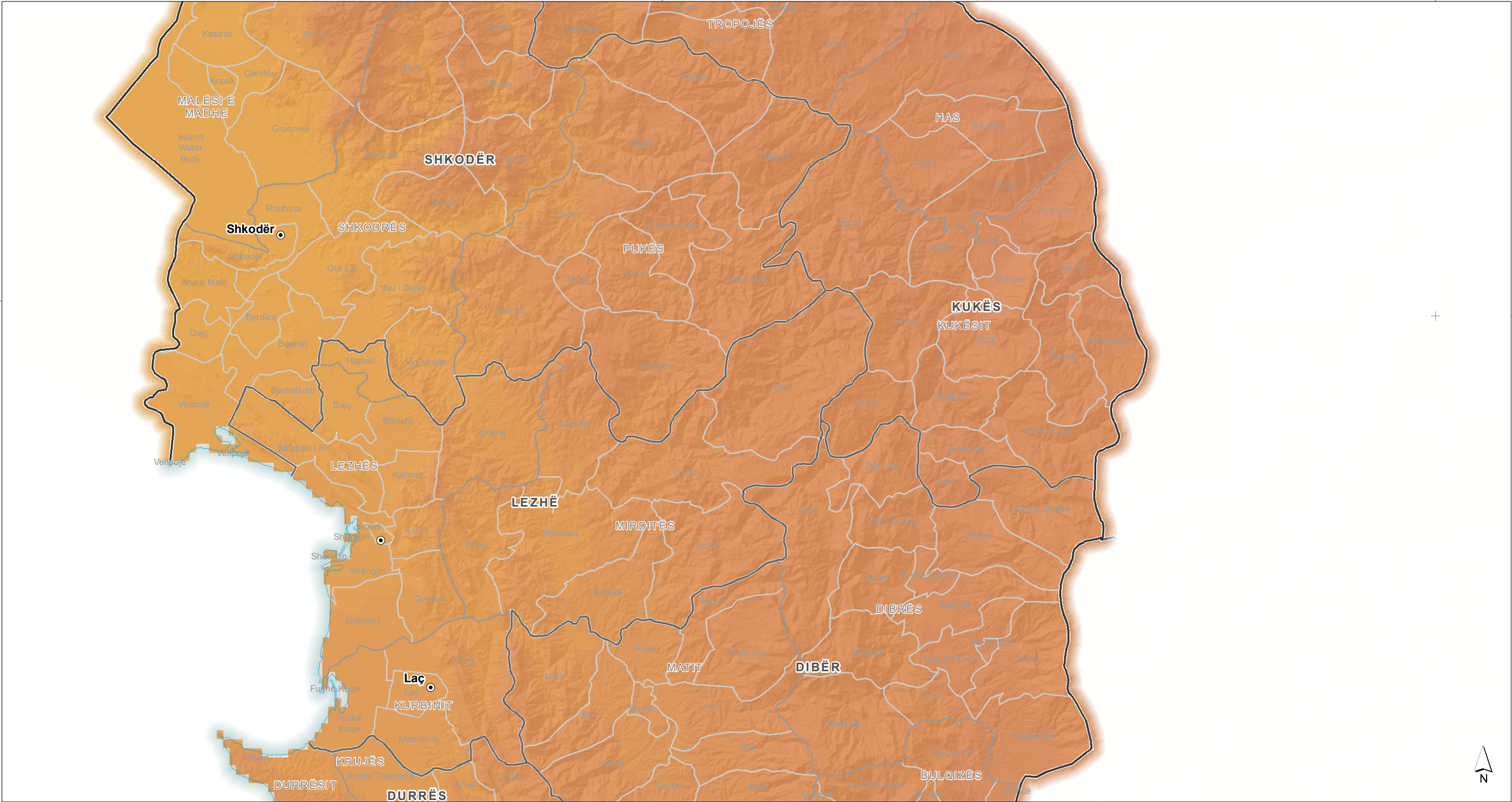
Map Document MA018_Alb_Ave_Precip_Feb

Projection & Datum WGS 1984 UTM Zone 34N

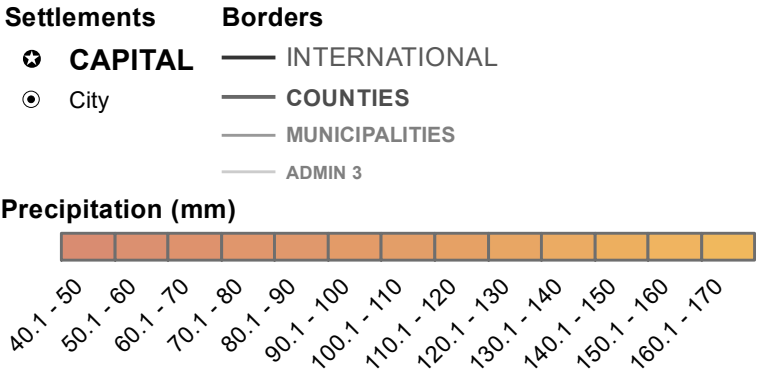
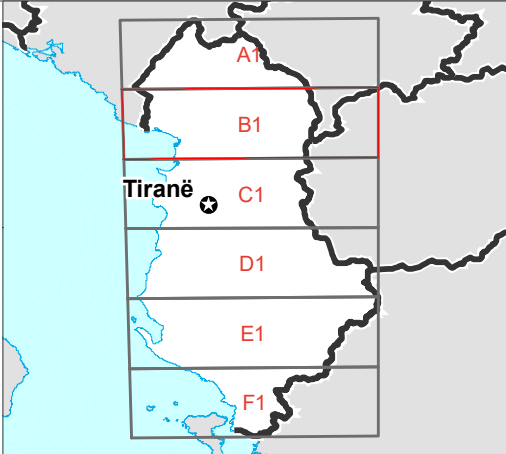
Produced by MapAction
mapaction.org
info@mapaction.org

Supported by the German Federal Foreign Office.

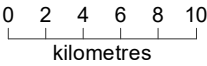
The depiction and use of boundaries, names and associated data shown here do not imply endorsement or acceptance by MapAction.



Albania: Average
Precipitation for
February
- Sheet B1



Map shows the average precipitation for February in Albania.



Data sources
GADM, SRTM, OpenStreetMap, WorldClim

Created 16 Dec 2019 / UTC+01:00

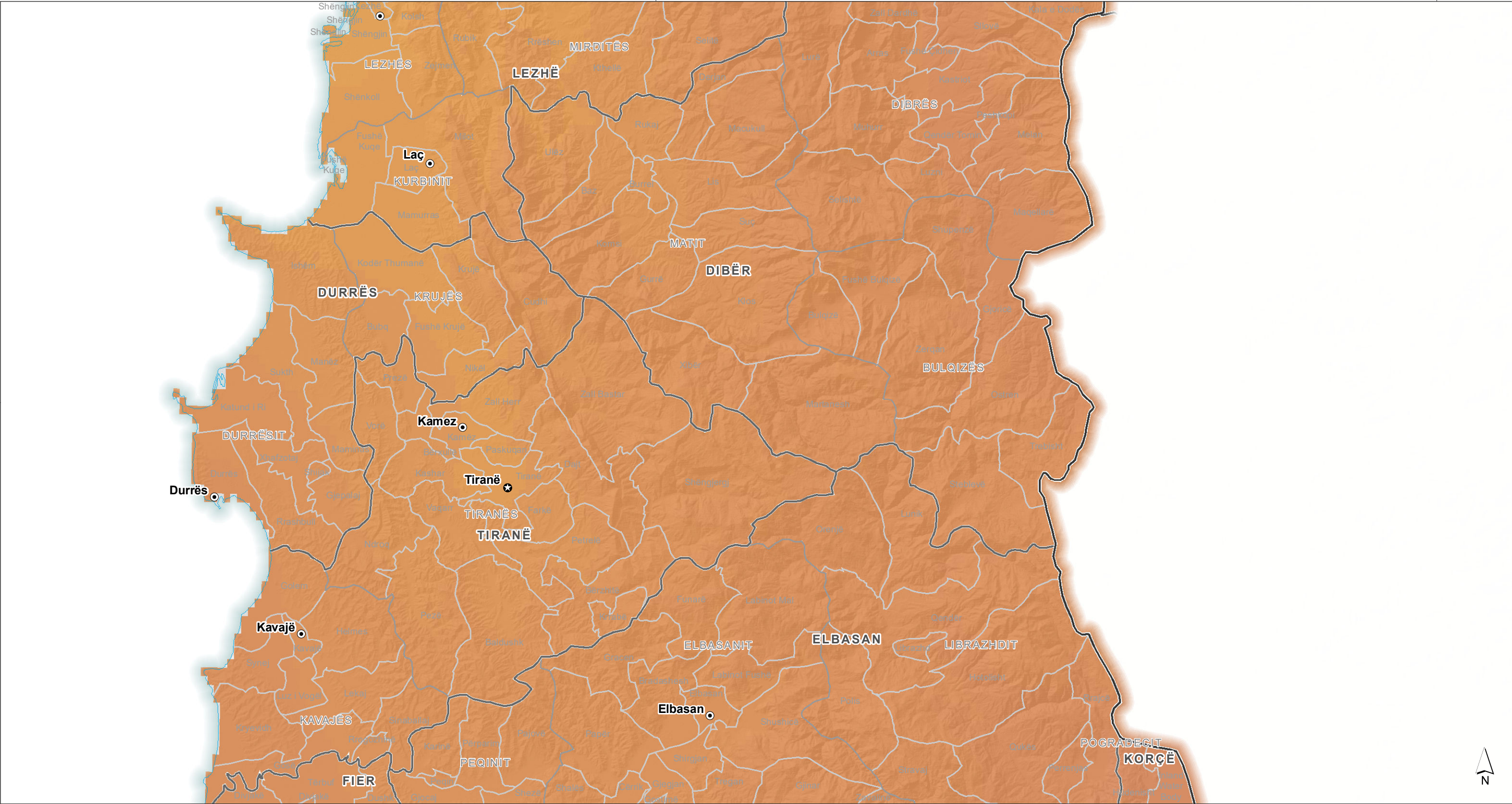
Map Document MA018_Alb_Ave_Precip_Feb

Projection & Datum WGS 1984 UTM Zone 34N

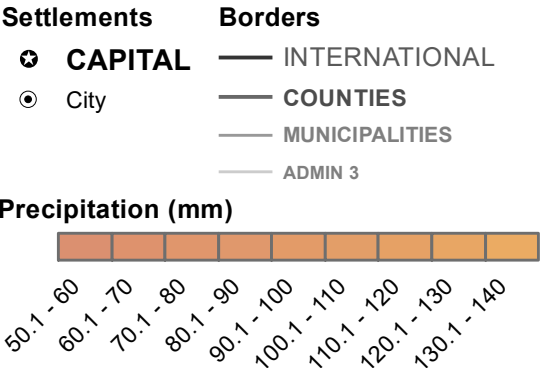
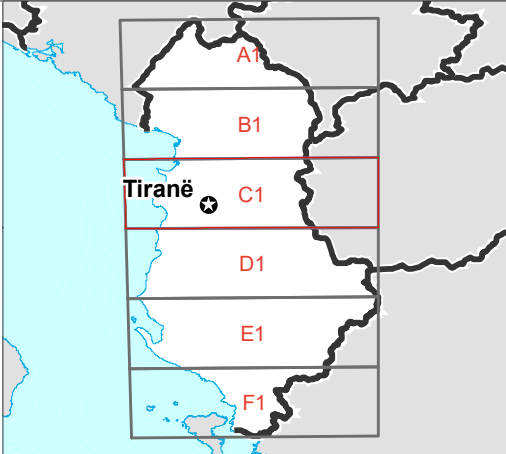
Produced by MapAction
mapaction.org
info@mapaction.org

Supported by the German Federal Foreign Office.

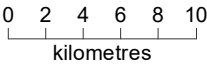
The depiction and use of boundaries, names and associated data shown here do not imply endorsement or acceptance by MapAction.



Albania: Average
Precipitation for
February
- Sheet C1



Map shows the average precipitation for February in Albania.



Data sources
GADM, SRTM, OpenStreetMap, WorldClim

Created 16 Dec 2019 / UTC+01:00

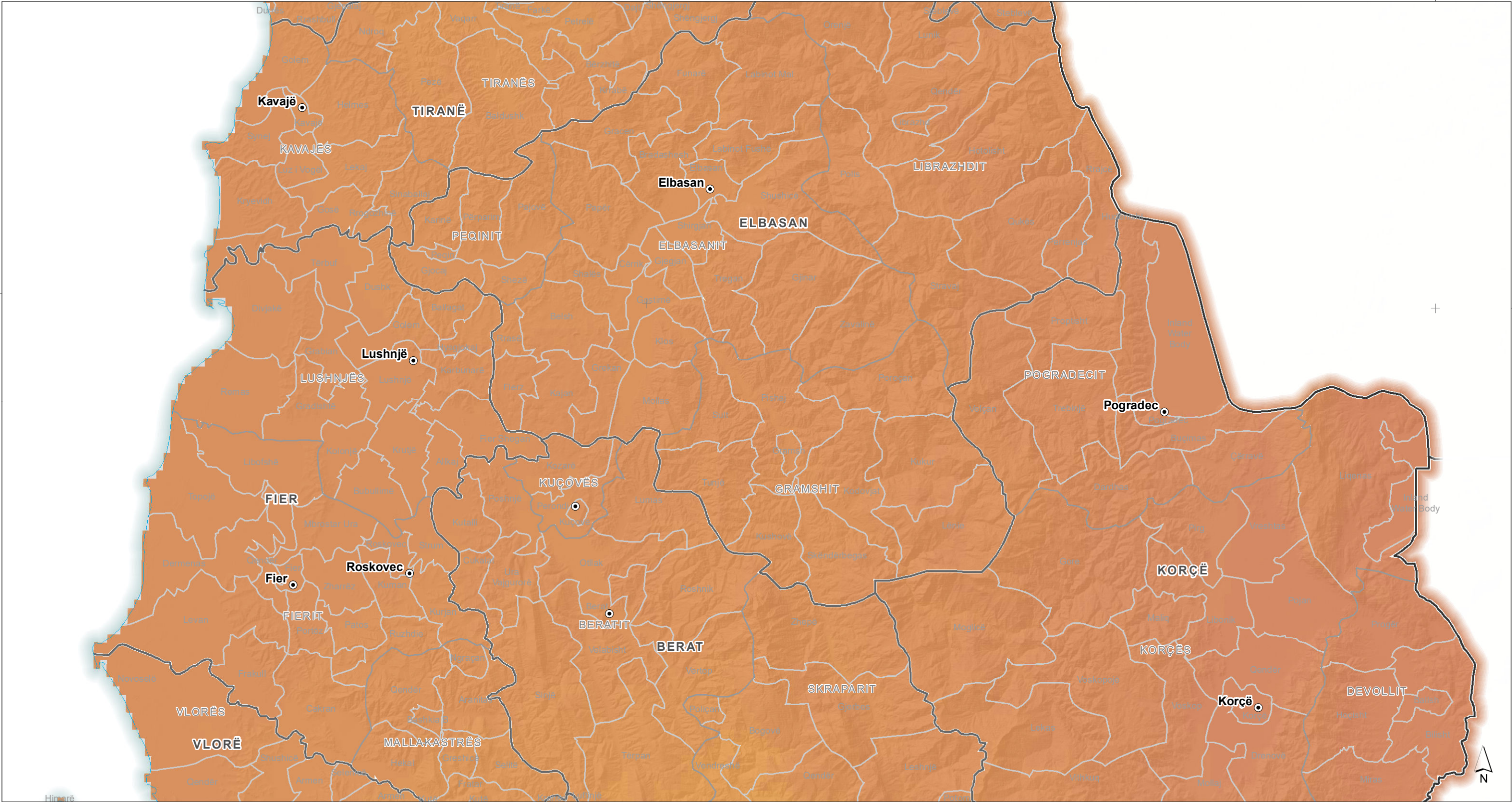
Map Document MA018_Alb_Ave_Precip_Feb

Projection & Datum WGS 1984 UTM Zone 34N

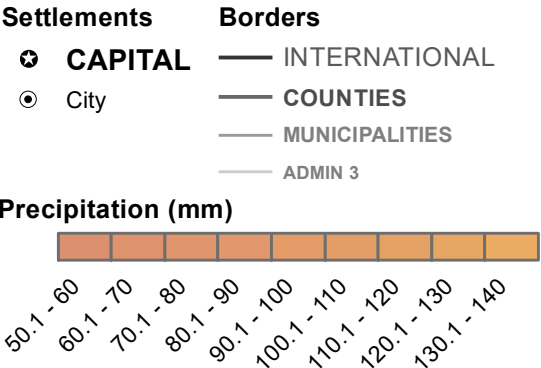
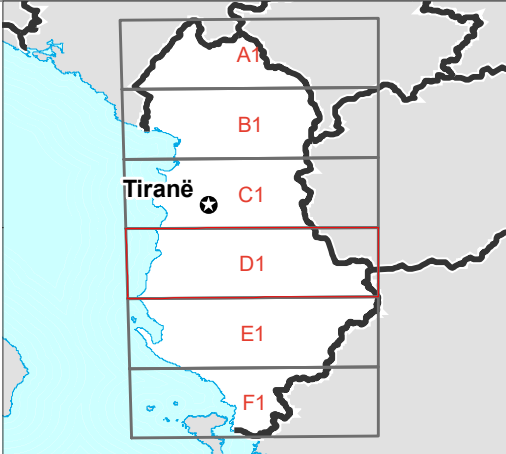
Produced by MapAction
mapaction.org
info@mapaction.org

Supported by the German Federal Foreign Office.

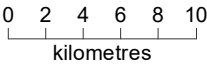
The depiction and use of boundaries, names and associated data shown here do not imply endorsement or acceptance by MapAction.



Albania: Average
Precipitation for
February
- Sheet D1



Map shows the average precipitation for February in Albania.



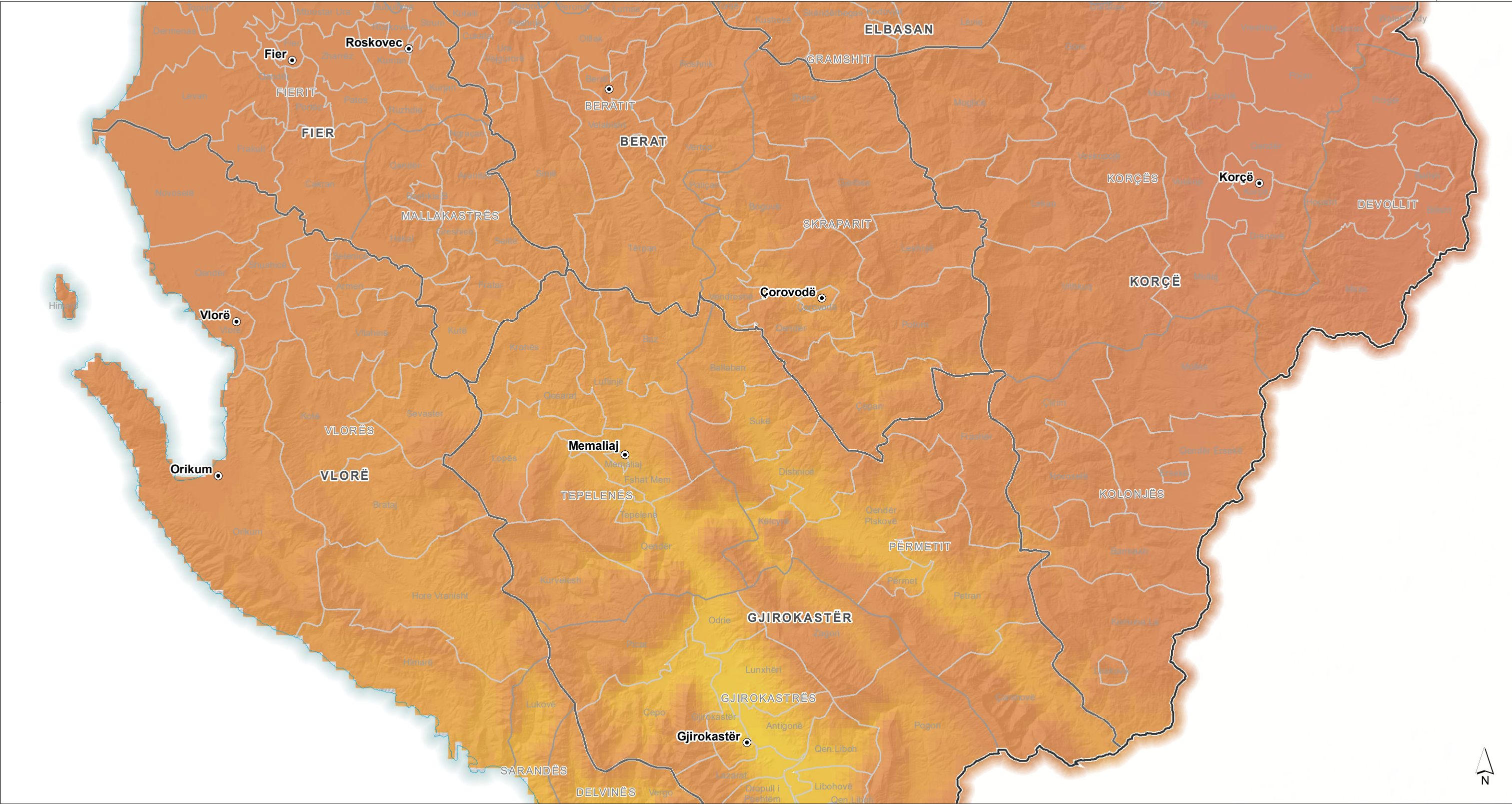
Data sources
GADM, SRTM, OpenStreetMap, WorldClim


Created 16 Dec 2019 / UTC+01:00

Map Document MA018_Alb_Ave_Precip_Feb

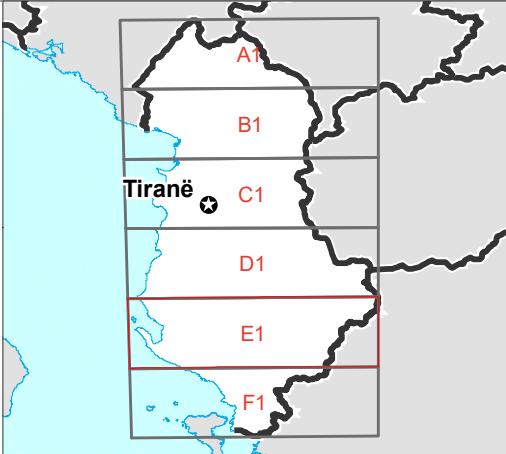
Projection & Datum WGS 1984 UTM Zone 34N

Produced by MapAction
mapaction.org
info@mapaction.org
Supported by the German Federal Foreign Office.
The depiction and use of boundaries, names and associated data shown here do not imply endorsement or acceptance by MapAction.





Albania: Average Precipitation for February
- Sheet E1




Settlements

- CAPITAL**
- City**

Borders

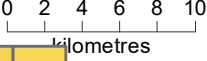
- INTERNATIONAL**
- COUNTIES**
- MUNICIPALITIES**
- ADMIN 3**

Precipitation (mm)



50.1 - 60 60.1 - 70 70.1 - 80 80.1 - 90 90.1 - 100 100.1 - 110 110.1 - 120 120.1 - 130 130.1 - 140 140.1 - 150 150.1 - 160 160.1 - 170 170.1 - 180 180.1 - 190 190.1 - 200 200.1 - 210 210.1 - 220 220.1 - 230 230.1 - 240 240.1 - 250 250.1 - 260

Map shows the average precipitation for February in Albania.



0 2 4 6 8 10 kilometres

Data sources
GADM, SRTM, OpenStreetMap, WorldClim

Created 16 Dec 2019 / UTC+01:00

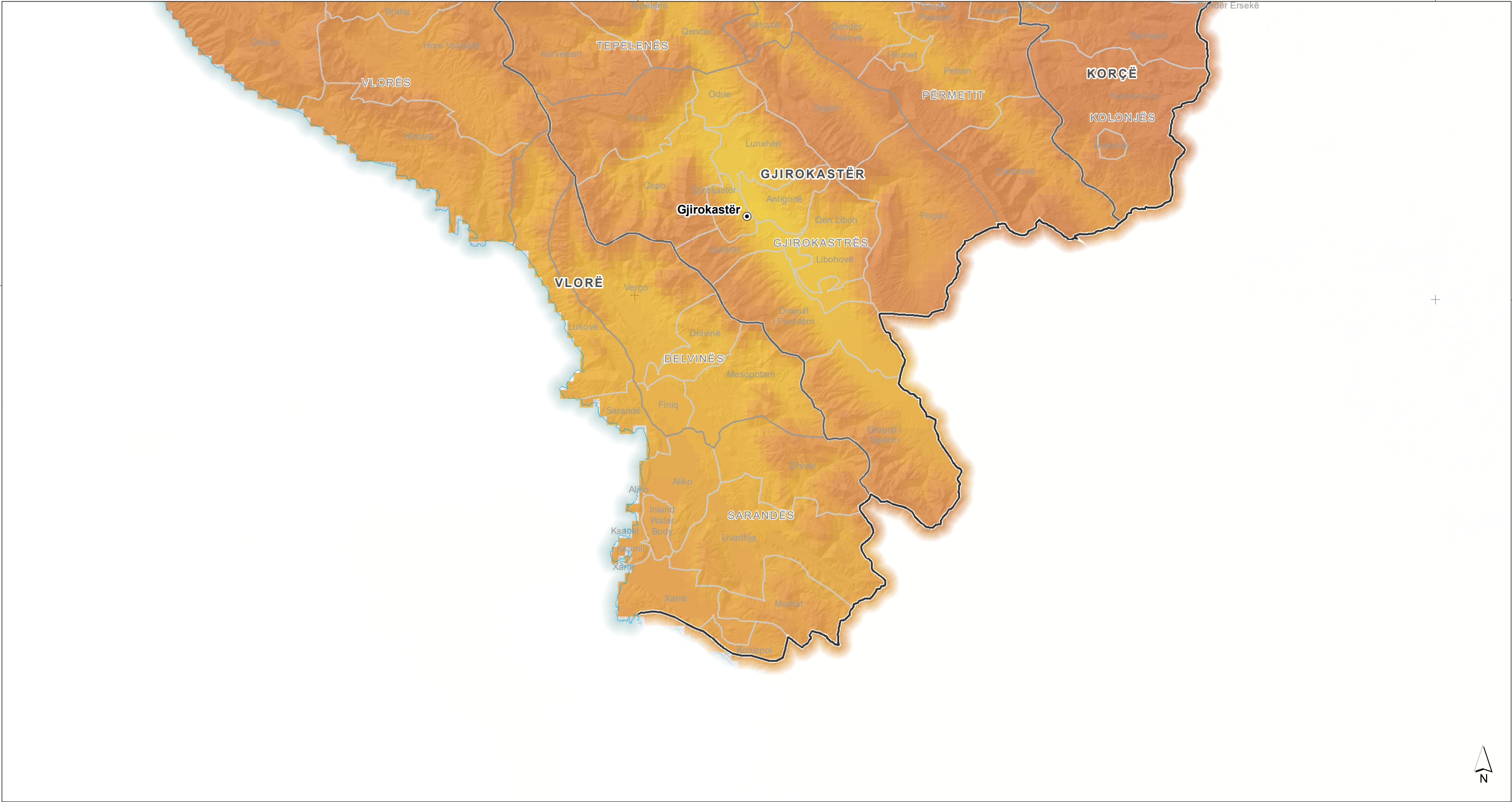
Map Document MA018_Alb_Ave_Precip_Feb

Projection & Datum WGS 1984 UTM Zone 34N

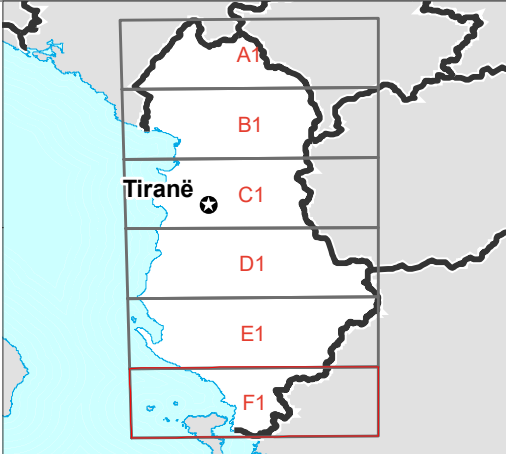
Produced by MapAction
mapaction.org
info@mapaction.org

Supported by the German Federal Foreign Office.

The depiction and use of boundaries, names and associated data shown here do not imply endorsement or acceptance by MapAction.



Albania: Average
Precipitation for
February
- Sheet F1



- Settlements

CAPITAL

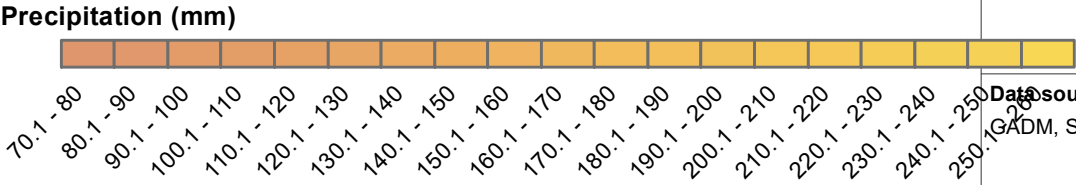
City
- Borders

INTERNATIONAL

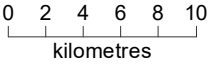
COUNTIES

MUNICIPALITIES

ADMIN 3



Map shows the average precipitation for February in Albania.



Data sources
GADM, SRTM, OpenStreetMap, WorldClim

Created 16 Dec 2019 / UTC+01:00

Map Document MA018_Alb_Ave_Precip_Feb

Projection & Datum WGS 1984 UTM Zone 34N

Produced by MapAction
mapaction.org
info@mapaction.org

Supported by Supported by the German Federal Foreign Office.

The depiction and use of boundaries, names and associated data shown here do not imply endorsement or acceptance by MapAction.