

Map shows the actual and forecasted storm track (as at 07 Feb 2022) and with population density.

All forecasted storm positions, path and wind speeds are the best available, with the cone of uncertainty showing the areas in which the cyclone may travel.

Storm position **Storm track**

- ◆ Previous position — Actual
- ◆ Forecasted position - - - Forecasted

Wind speeds

- Likely 64 knot (120 km/h) winds
- Likely 50 knot (90 km/h) winds
- Likely 34 knot (60 km/h) winds
- Cone of uncertainty

Settlements **Borders**

- ★ CAPITAL — REGIONAL
- City

Population density (people per Km²)

- 15,000 - 34,369
- 500 - 15,000
- 50 - 500
- 25 - 50
- 0.02 - 25

Data Sources:
 Madagascar National Disaster Management Office, GADM, OpenStreetMap, Joint Typhoon Warning Centre, World Pop

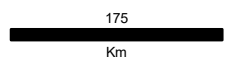
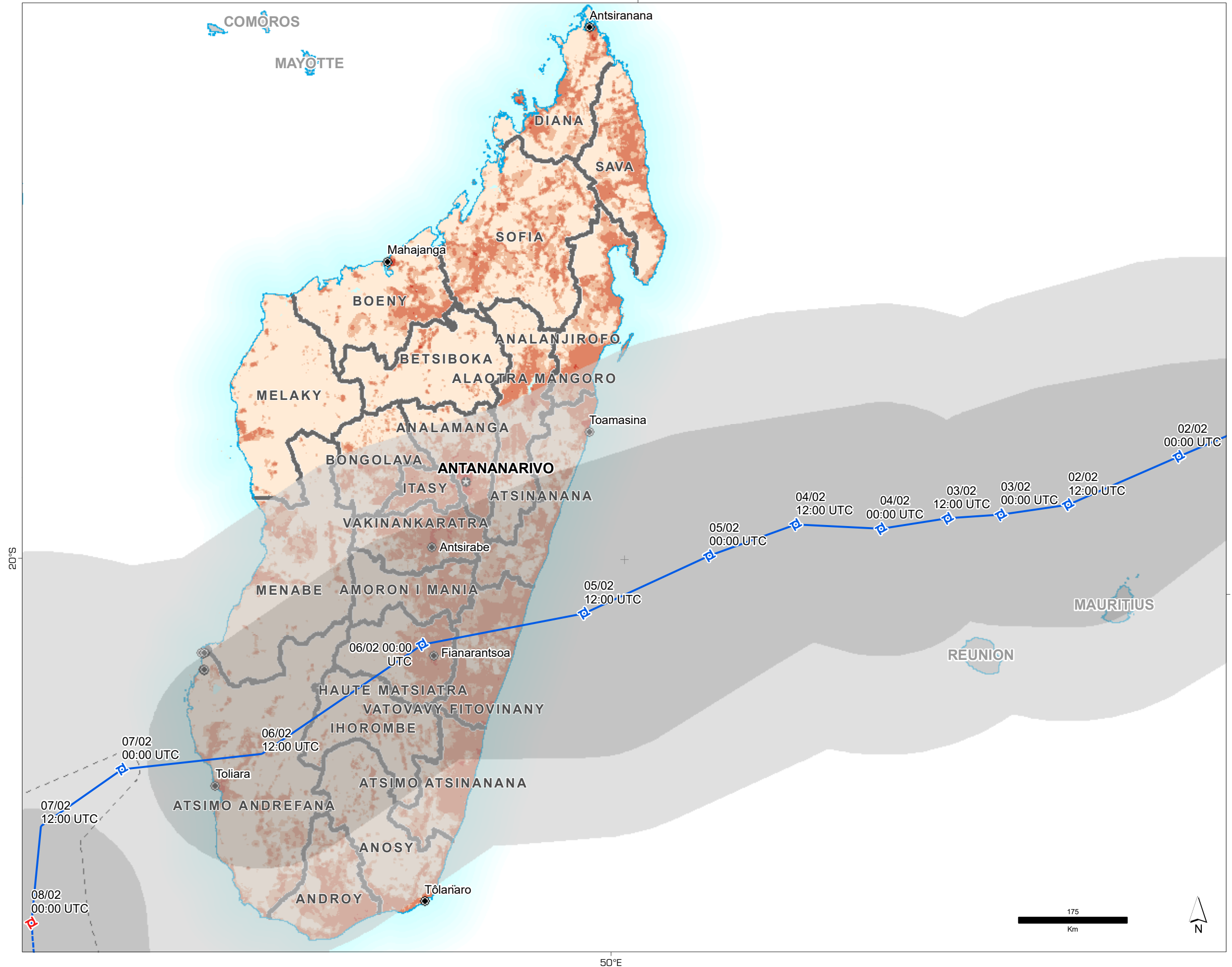
Created 07 Feb 2022 / 11:00 UTC+03:00

Projection & Datum WGS 1984 UTM Zone 38S / WGS

GLIDE Number EC-2022-000156-MDG

Produced by MapAction
<https://mapaction.org>
madagascar@mapaction.org

Supported by German Federal Foreign Office
 The depiction and use of boundaries, names and associated data shown here do not imply endorsement or acceptance by MapAction.



50°E