



### Boundary

— Governorate / Muhafazat

### Settlement

○ City

● Town

### Transport

— Primary road

— Secondary road

✈ Airport

⚓ Seaport

### Waterbody

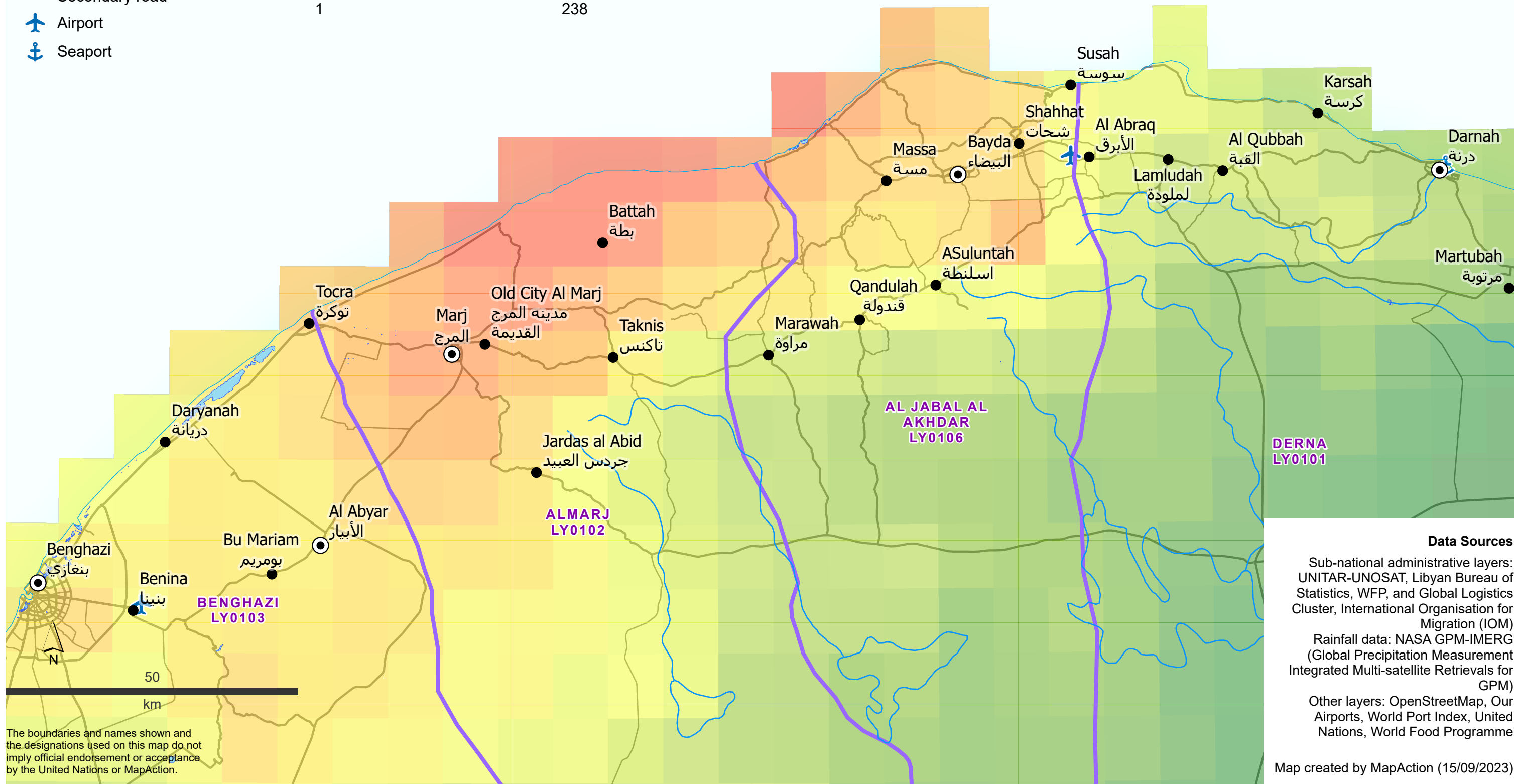
■ Lake

— River

— Coastline

### Rainfall accumulation 9-12 Sep

mm



### Data Sources

Sub-national administrative layers:  
UNITAR-UNOSAT, Libyan Bureau of  
Statistics, WFP, and Global Logistics  
Cluster, International Organisation for  
Migration (IOM)

Rainfall data: NASA GPM-IMERG  
(Global Precipitation Measurement  
Integrated Multi-satellite Retrievals for  
GPM)

Other layers: OpenStreetMap, Our  
Airports, World Port Index, United  
Nations, World Food Programme

Map created by MapAction (15/09/2023)

The boundaries and names shown and  
the designations used on this map do not  
imply official endorsement or acceptance  
by the United Nations or MapAction.