

Organisation	Acronym
ACNUR	ACNUR
ADRA	ADRA
AYUDA EN ACCIÓN	AEA
CARE	CARE
CHILD FUND	CF
CRH	CRH
Cáritas	Cáritas
FAO	FAO
GOAL	GOAL
Habitat	Habitat
Misiones del Agua Int'l	MAI
NRC	NRC
OCHA	OCHA
OHCHR	OHCHR
OIM	OIM
ONU MUJERES	OM
OPS	OPS
PLAN	PLAN
PMA	PMA
SC	SC
Trocaire	Trocaire
UNICEF	UNICEF
WVI	WVI

The labels show the total number of reported activities for each of these sectors, and who is delivering them:

Education	WASH
Protection	Health
Coordination	Food Security
Logistics	Shelter

Severity of Impact

- Critical
- High
- Known flood extent

Population Density

- High
- Low

Capital

- CAPITAL
- City

Borders

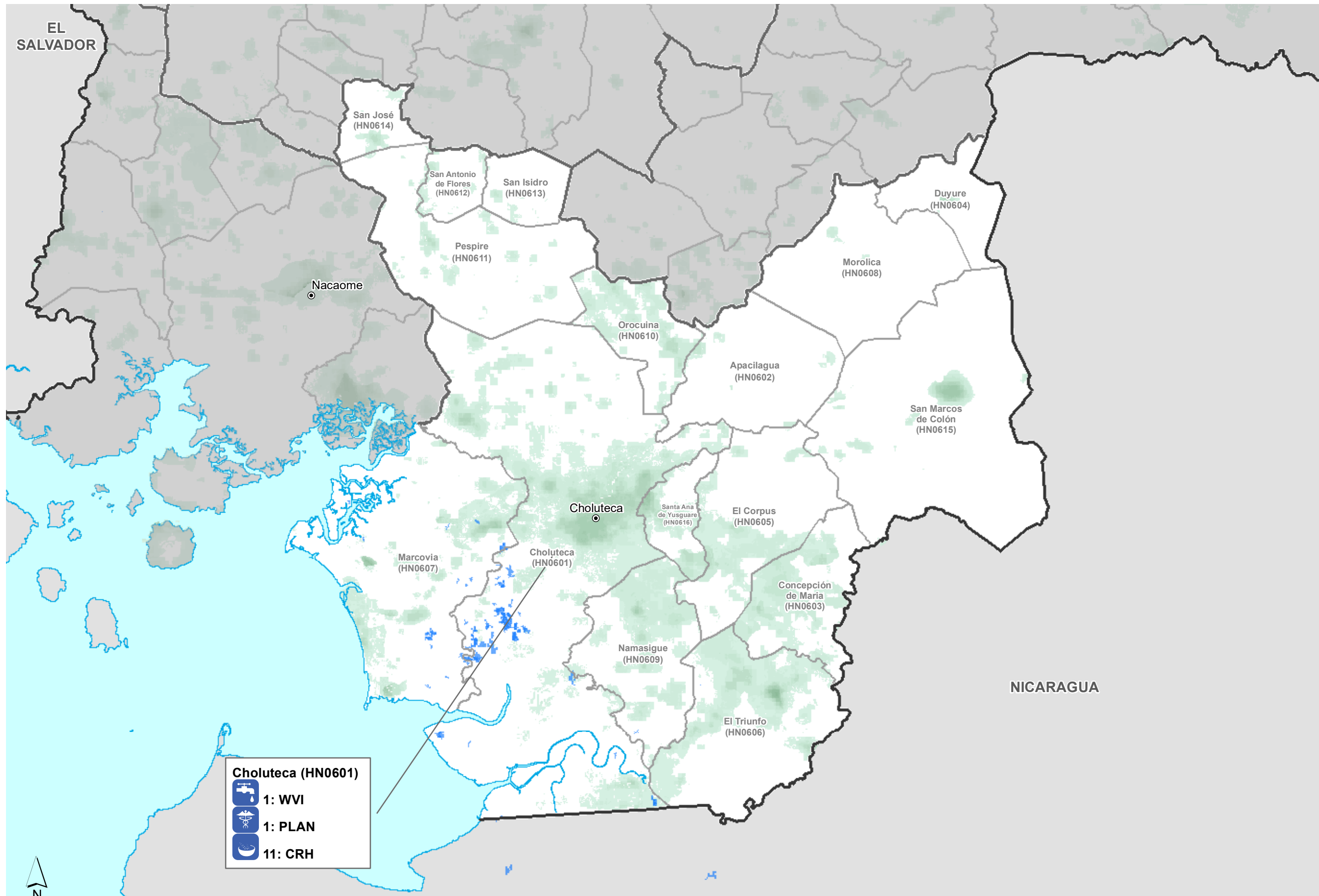
- INTERNATIONAL
- DEPARTMENT
- MUNICIPALITY

60
km
Data Sources
SINIT, GADM, OCHA ROLAC, Worldpop, OpenStreetMap, WFP, Copernicus

NOTE: Not all activities are being reported at Municipality level. If activities are missing please report them through OCHA ROLAC 3w system.

Map created by MapAction (19/11/2020)

Humanitarian Presence: Who is doing What in each Municipality in Department Choluteca (as at 18th Nov 2020)



Organisation	Acronym
ACNUR	ACNUR
ADRA	ADRA
AYUDA EN ACCIÓN	AEA
CARE	CARE
CHILD FUND	CF
CRH	CRH
Cáritas	Cáritas
FAO	FAO
GOAL	GOAL
Habitat	Habitat
Misiones del Agua Int'l	MAI
NRC	NRC
OCHA	OCHA
OHCHR	OHCHR
OIM	OIM
ONU MUJERES	OM
OPS	OPS
PLAN	PLAN
PMA	PMA
SC	SC
Trocaire	Trocaire
UNICEF	UNICEF
WVI	WVI

The labels show the total number of reported activities for each of these sectors, and who is delivering them:

- Education
- WASH
- Protection
- Health
- Coordination
- Food Security
- Logistics
- Shelter

Severity of Impact

- Critical
- High
- Known flood extent

Population Density

- High
- Low

- CAPITAL**
- City

- ### Borders
- INTERNATIONAL
 - DEPARTMENT
 - MUNICIPALITY

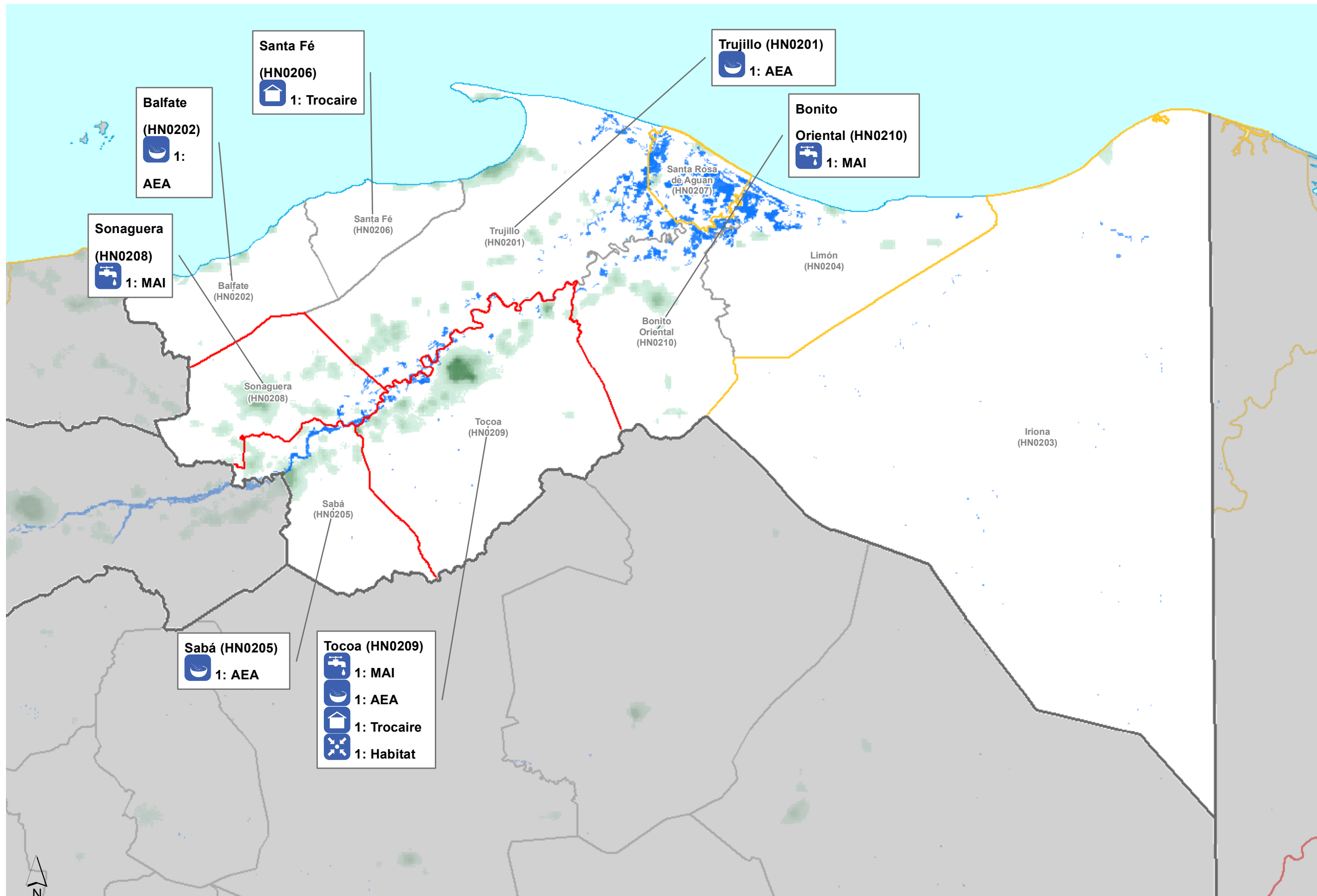
Choluteca (HN0601)

- 1: WVI
- 1: PLAN
- 11: CRH

50 km
Data Sources
 SINIT, GADM, OCHA ROLAC, Worldpop, OpenStreetMap, WFP, Copernicus

NOTE: Not all activities are being reported at Municipality level. If activities are missing please report them through OCHA ROLAC 3w system.

Map created by MapAction (19/11/2020)



Organisation	Acronym
ACNUR	ACNUR
ADRA	ADRA
AYUDA EN ACCIÓN	AEA
CARE	CARE
CHILD FUND	CF
CRH	CRH
Cáritas	Cáritas
FAO	FAO
GOAL	GOAL
Habitat	Habitat
Misiones del Agua Int'l	MAI
NRC	NRC
OCHA	OCHA
OHCHR	OHCHR
OIM	OIM
ONU MUJERES	OM
OPS	OPS
PLAN	PLAN
PMA	PMA
SC	SC
Trocaire	Trocaire
UNICEF	UNICEF
WVI	WVI

The labels show the total number of reported activities for each of these sectors, and who is delivering them:

- Education
- WASH
- Protection
- Health
- Coordination
- Food Security
- Logistics
- Shelter

Severity of Impact

- Critical
- High
- Known flood extent

Population Density

- High
- Low

- CAPITAL**
- City

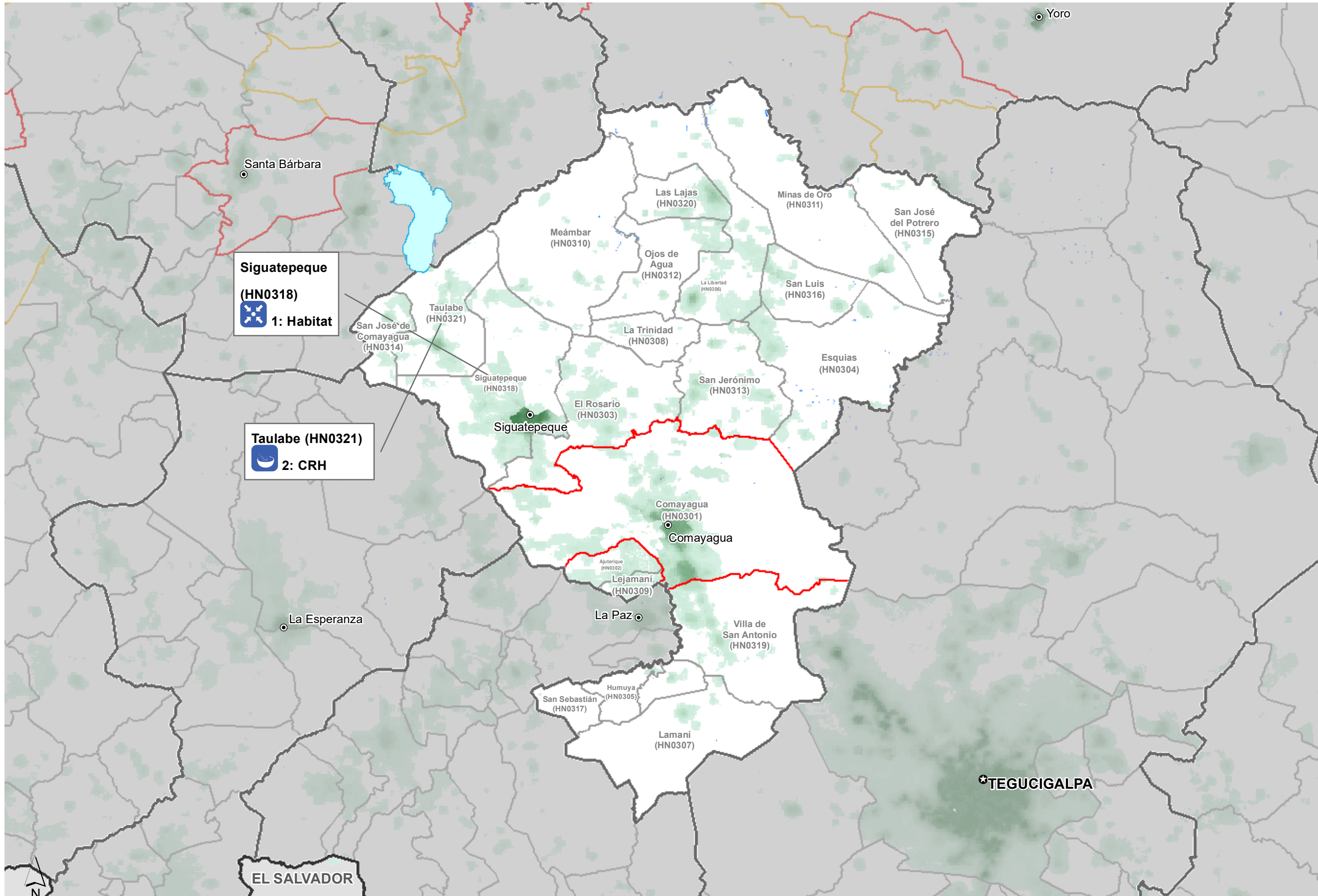
- Borders**
- INTERNATIONAL
 - DEPARTMENT
 - MUNICIPALITY

60 km
Data Sources
 SINIT, GADM, OCHA ROLAC, Worldpop, OpenStreetMap, WFP, Copernicus

NOTE: Not all activities are being reported at Municipality level. If activities are missing please report them through OCHA ROLAC 3w system.

Map created by MapAction (19/11/2020)

Humanitarian Presence: Who is doing What in each Municipality in Department Comayagua (as at 18th Nov 2020)



Organisation	Acronym
ACNUR	ACNUR
ADRA	ADRA
AYUDA EN ACCIÓN	AEA
CARE	CARE
CHILD FUND	CF
CRH	CRH
Cáritas	Cáritas
FAO	FAO
GOAL	GOAL
Habitat	Habitat
Misiones del Agua Int'l	MAI
NRC	NRC
OCHA	OCHA
OHCHR	OHCHR
OIM	OIM
ONU MUJERES	OM
OPS	OPS
PLAN	PLAN
PMA	PMA
SC	SC
Trocaire	Trocaire
UNICEF	UNICEF
WVI	WVI

The labels show the total number of reported activities for each of these sectors, and who is delivering them:

- Education
- WASH
- Protection
- Health
- Coordination
- Food Security
- Logistics
- Shelter

Severity of Impact

- Critical
- High
- Known flood extent

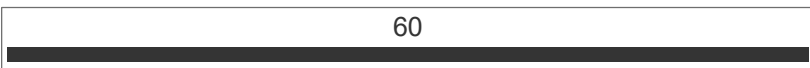
Population Density

- High
- Low

- CAPITAL
- City

Borders

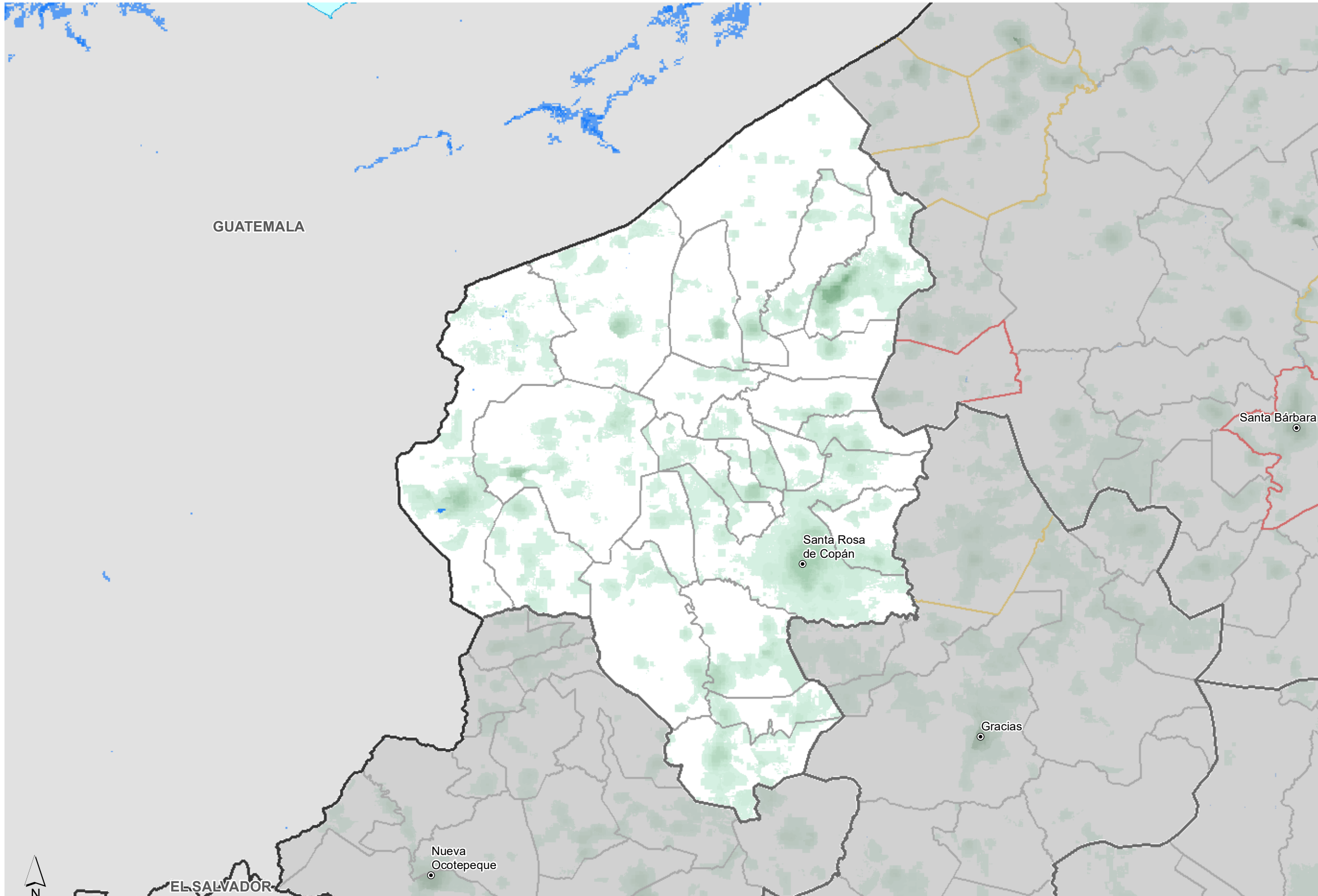
- INTERNATIONAL
- DEPARTMENT
- MUNICIPALITY



Data Sources
SINIT, GADM, OCHA ROLAC, Worldpop, OpenStreetMap, WFP, Copernicus

NOTE: Not all activities are being reported at Municipality level. If activities are missing please report them through OCHA ROLAC 3w system.

Map created by MapAction (19/11/2020)



Organisation	Acronym
ACNUR	ACNUR
ADRA	ADRA
AYUDA EN ACCIÓN	AEA
CARE	CARE
CHILD FUND	CF
CRH	CRH
Cáritas	Cáritas
FAO	FAO
GOAL	GOAL
Habitat	Habitat
Misiones del Agua Int'l	MAI
NRC	NRC
OCHA	OCHA
OHCHR	OHCHR
OIM	OIM
ONU MUJERES	OM
OPS	OPS
PLAN	PLAN
PMA	PMA
SC	SC
Trocaire	Trocaire
UNICEF	UNICEF
WVI	WVI

The labels show the total number of reported activities for each of these sectors, and who is delivering them:

- Education
- Protection
- Coordination
- Logistics
- WASH
- Health
- Food Security
- Shelter

Severity of Impact

- Critical
- High
- Known flood extent

Population Density

- High
- Low

- CAPITAL
- City

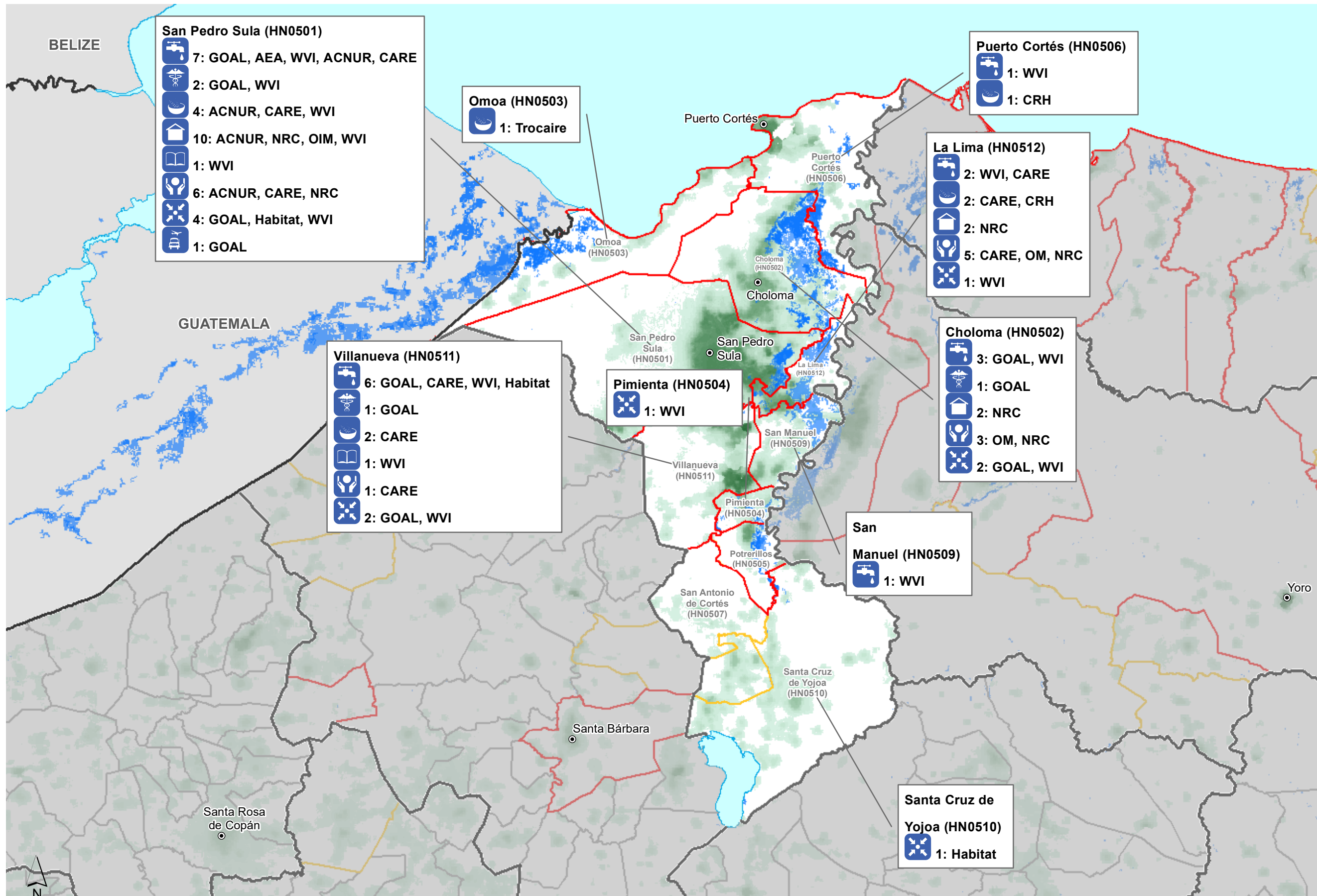
- Borders**
- INTERNATIONAL
 - DEPARTMENT
 - MUNICIPALITY

50 km
Data Sources
 SINIT, GADM, OCHA ROLAC, Worldpop, OpenStreetMap, WFP, Copernicus

NOTE: Not all activities are being reported at Municipality level. If activities are missing please report them through OCHA ROLAC 3w system.

Map created by MapAction (19/11/2020)

Humanitarian Presence: Who is doing What in each Municipality in Department Cortés (as at 18th Nov 2020)



Organisation	Acronym
ACNUR	ACNUR
ADRA	ADRA
AYUDA EN ACCIÓN	AEA
CARE	CARE
CHILD FUND	CF
CRH	CRH
Cáritas	Cáritas
FAO	FAO
GOAL	GOAL
Habitat	Habitat
Misiones del Agua Int'l	MAI
NRC	NRC
OCHA	OCHA
OHCHR	OHCHR
OIM	OIM
ONU MUJERES	OM
OPS	OPS
PLAN	PLAN
PMA	PMA
SC	SC
Trocaire	Trocaire
UNICEF	UNICEF
WVI	WVI

The labels show the total number of reported activities for each of these sectors, and who is delivering them:

	Education		WASH
	Protection		Health
	Coordination		Food Security
	Logistics		Shelter

Severity of Impact

- Critical
- High
- Known flood extent

Population Density

- High
- Low

CAPITAL

City

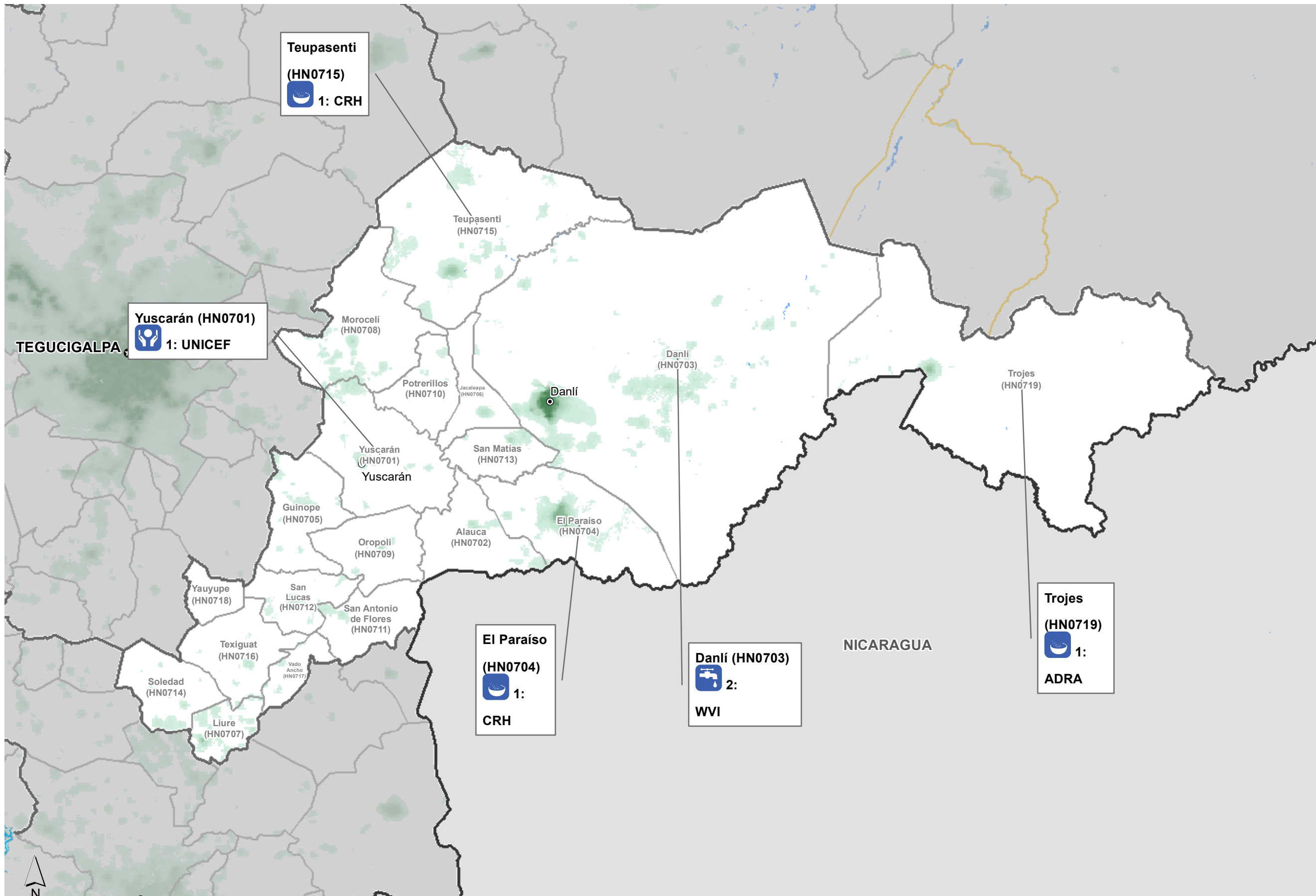
Borders

- INTERNATIONAL
- DEPARTMENT
- MUNICIPALITY

70 km

Data Sources
SINIT, GADM, OCHA ROLAC, Worldpop, OpenStreetMap, WFP, Copernicus

NOTE: Not all activities are being reported at Municipality level. If activities are missing please report them through OCHA ROLAC 3w system.



Organisation	Acronym
ACNUR	ACNUR
ADRA	ADRA
AYUDA EN ACCIÓN	AEA
CARE	CARE
CHILD FUND	CF
CRH	CRH
Cáritas	Cáritas
FAO	FAO
GOAL	GOAL
Habitat	Habitat
Misiones del Agua Int'l	MAI
NRC	NRC
OCHA	OCHA
OHCHR	OHCHR
OIM	OIM
ONU MUJERES	OM
OPS	OPS
PLAN	PLAN
PMA	PMA
SC	SC
Trocaire	Trocaire
UNICEF	UNICEF
WVI	WVI

The labels show the total number of reported activities for each of these sectors, and who is delivering them:

- Education
- WASH
- Protection
- Health
- Coordination
- Food Security
- Logistics
- Shelter

Severity of Impact

- Critical
- High
- Known flood extent

Population Density

- High
- Low

- CAPITAL
- City

Borders

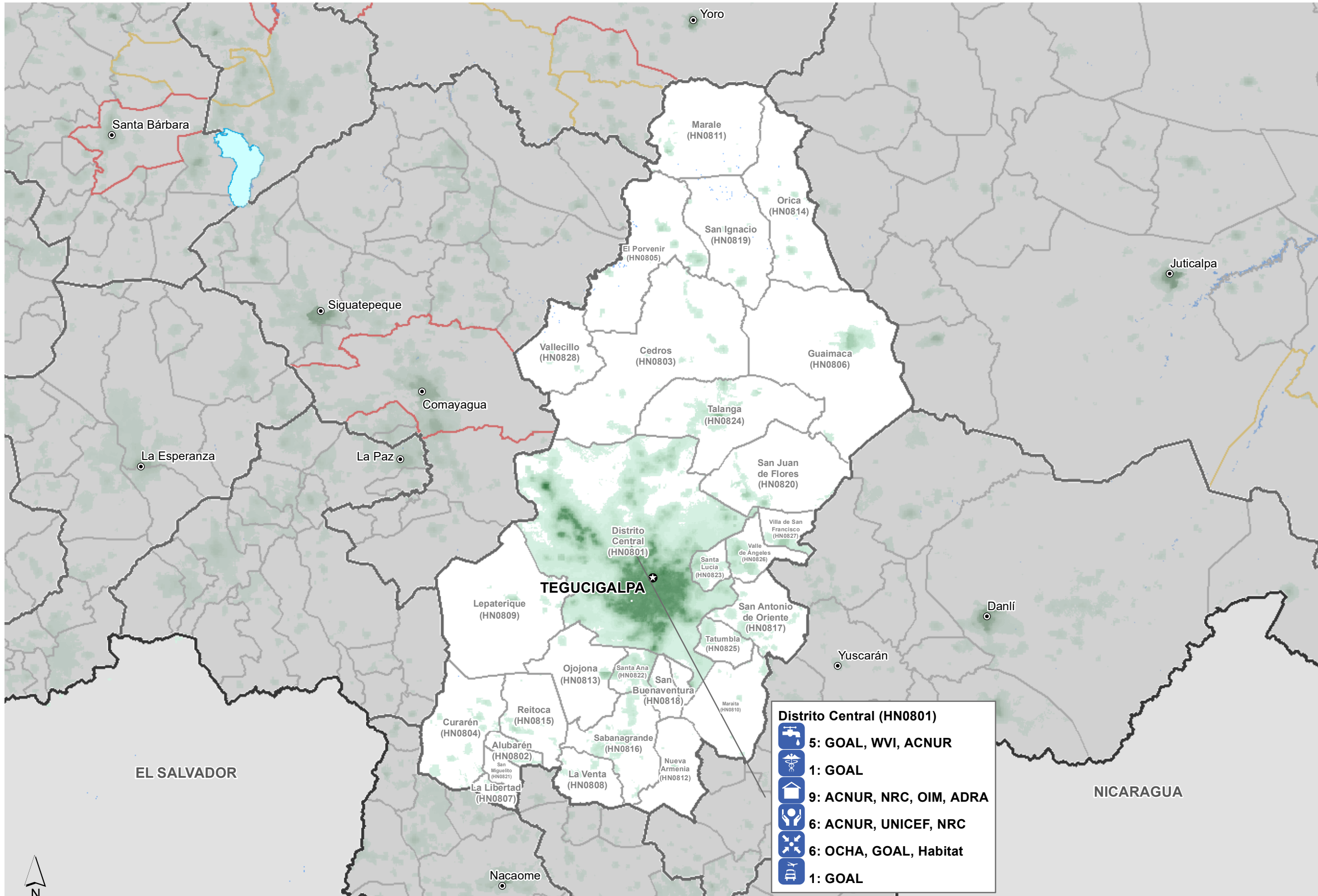
- INTERNATIONAL
- DEPARTMENT
- MUNICIPALITY

70 km
Data Sources
 SINIT, GADM, OCHA ROLAC, Worldpop, OpenStreetMap, WFP, Copernicus

NOTE: Not all activities are being reported at Municipality level. If activities are missing please report them through OCHA ROLAC 3w system.

Map created by MapAction (19/11/2020)

Humanitarian Presence: Who is doing What in each Municipality in Department Francisco Morazán (as at 18th Nov 2020)



Organisation	Acronym
ACNUR	ACNUR
ADRA	ADRA
AYUDA EN ACCIÓN	AEA
CARE	CARE
CHILD FUND	CF
CRH	CRH
Cáritas	Cáritas
FAO	FAO
GOAL	GOAL
Habitat	Habitat
Misiones del Agua Int'l	MAI
NRC	NRC
OCHA	OCHA
OHCHR	OHCHR
OIM	OIM
ONU MUJERES	OM
OPS	OPS
PLAN	PLAN
PMA	PMA
SC	SC
Trocaire	Trocaire
UNICEF	UNICEF
WVI	WVI

The labels show the total number of reported activities for each of these sectors, and who is delivering them:

- Education
- WASH
- Protection
- Health
- Coordination
- Food Security
- Logistics
- Shelter

Severity of Impact

- Critical
- High
- Known flood extent

Population Density

- High
- Low

- CAPITAL
- City

Borders

- INTERNATIONAL
- DEPARTMENT
- MUNICIPALITY

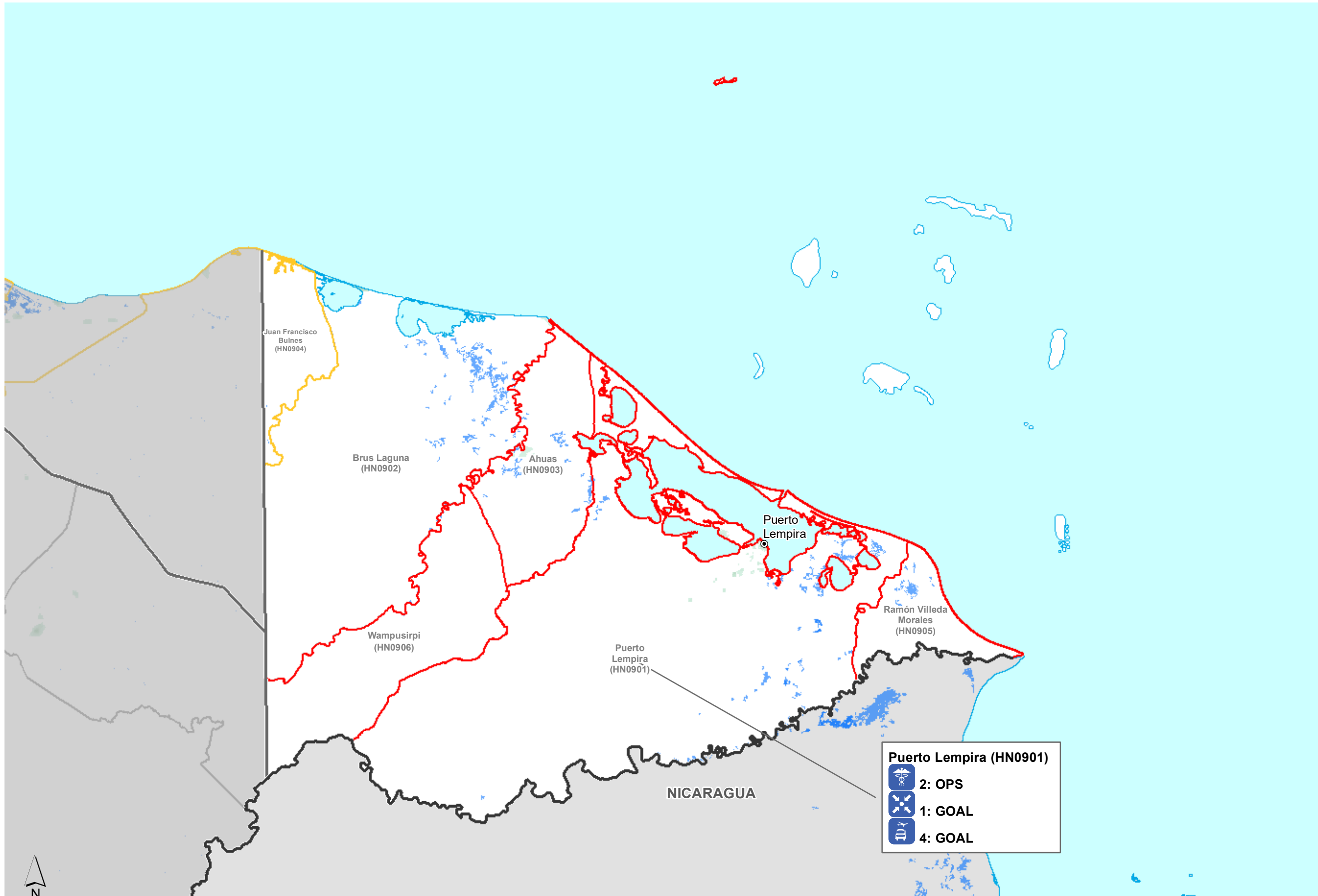
Distrito Central (HN0801)

- 5: GOAL, WVI, ACNUR
- 1: GOAL
- 9: ACNUR, NRC, OIM, ADRA
- 6: ACNUR, UNICEF, NRC
- 6: OCHA, GOAL, Habitat
- 1: GOAL

90 km
Data Sources
 SINIT, GADM, OCHA ROLAC, Worldpop, OpenStreetMap, WFP, Copernicus

NOTE: Not all activities are being reported at Municipality level. If activities are missing please report them through OCHA ROLAC 3w system.

Map created by MapAction (19/11/2020)



Organisation	Acronym
ACNUR	ACNUR
ADRA	ADRA
AYUDA EN ACCIÓN	AEA
CARE	CARE
CHILD FUND	CF
CRH	CRH
Cáritas	Cáritas
FAO	FAO
GOAL	GOAL
Habitat	Habitat
Misiones del Agua Int'l	MAI
NRC	NRC
OCHA	OCHA
OHCHR	OHCHR
OIM	OIM
ONU MUJERES	OM
OPS	OPS
PLAN	PLAN
PMA	PMA
SC	SC
Trocaire	Trocaire
UNICEF	UNICEF
WVI	WVI

The labels show the total number of reported activities for each of these sectors, and who is delivering them:

- Education
- WASH
- Protection
- Health
- Coordination
- Food Security
- Logistics
- Shelter

Severity of Impact

- Critical
- High
- Known flood extent

Population Density

- High
- Low

- CAPITAL
- City

Borders

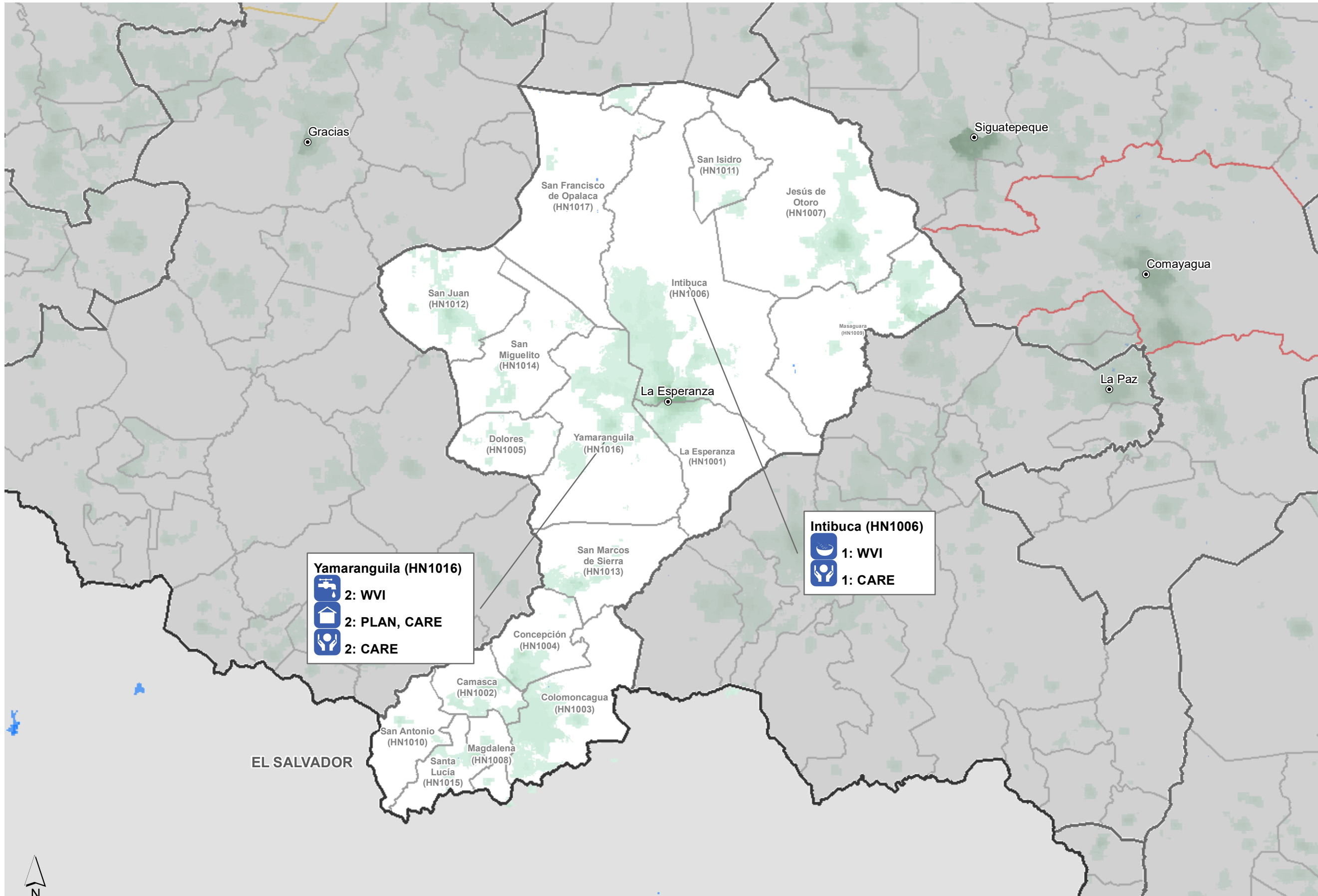
- INTERNATIONAL
- DEPARTMENT
- MUNICIPALITY

Data Sources
SINIT, GADM, OCHA ROLAC, Worldpop, OpenStreetMap, WFP, Copernicus

NOTE: Not all activities are being reported at Municipality level. If activities are missing please report them through OCHA ROLAC 3w system.

Map created by MapAction (19/11/2020)

Humanitarian Presence: Who is doing What in each Municipality in Department Intibucá (as at 18th Nov 2020)



Organisation	Acronym
ACNUR	ACNUR
ADRA	ADRA
AYUDA EN ACCIÓN	AEA
CARE	CARE
CHILD FUND	CF
CRH	CRH
Cáritas	Cáritas
FAO	FAO
GOAL	GOAL
Habitat	Habitat
Misiones del Agua Int'l	MAI
NRC	NRC
OCHA	OCHA
OHCHR	OHCHR
OIM	OIM
ONU MUJERES	OM
OPS	OPS
PLAN	PLAN
PMA	PMA
SC	SC
Trocaire	Trocaire
UNICEF	UNICEF
WVI	WVI

The labels show the total number of reported activities for each of these sectors, and who is delivering them:

- Education
- WASH
- Protection
- Health
- Coordination
- Food Security
- Logistics
- Shelter

Severity of Impact

- Critical
- High
- Known flood extent

Population Density

- High
- Low

- CAPITAL
- City

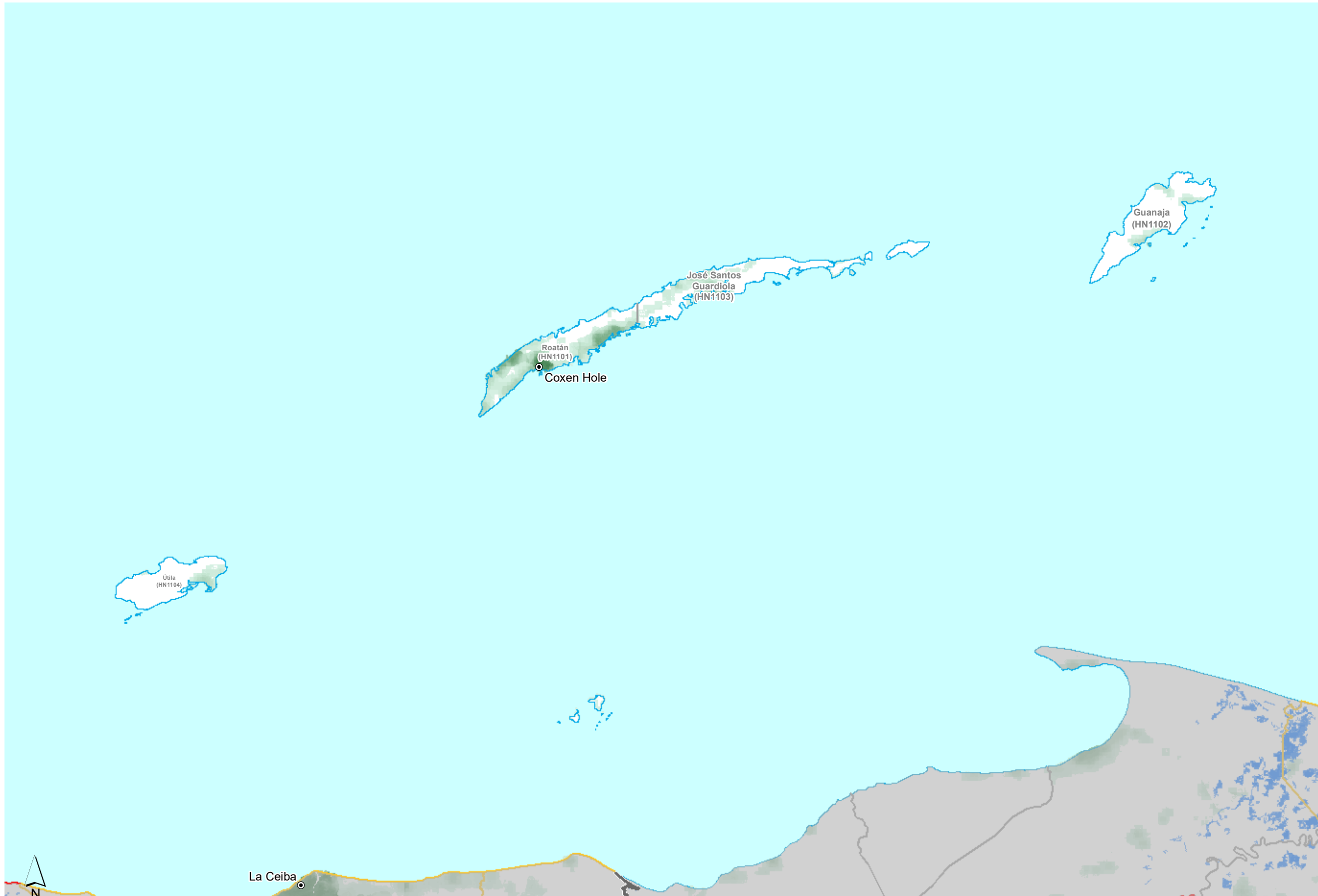
Borders

- INTERNATIONAL
- DEPARTMENT
- MUNICIPALITY

50 km
Data Sources
 SINIT, GADM, OCHA ROLAC, Worldpop, OpenStreetMap, WFP, Copernicus

NOTE: Not all activities are being reported at Municipality level. If activities are missing please report them through OCHA ROLAC 3w system.

Map created by MapAction (19/11/2020)



Organisation	Acronym
ACNUR	ACNUR
ADRA	ADRA
AYUDA EN ACCIÓN	AEA
CARE	CARE
CHILD FUND	CF
CRH	CRH
Cáritas	Cáritas
FAO	FAO
GOAL	GOAL
Habitat	Habitat
Misiones del Agua Int'l	MAI
NRC	NRC
OCHA	OCHA
OHCHR	OHCHR
OIM	OIM
ONU MUJERES	OM
OPS	OPS
PLAN	PLAN
PMA	PMA
SC	SC
Trocaire	Trocaire
UNICEF	UNICEF
WVI	WVI

The labels show the total number of reported activities for each of these sectors, and who is delivering them:

- Education
- Protection
- Coordination
- Logistics
- WASH
- Health
- Food Security
- Shelter

Severity of Impact

- Critical
- High
- Known flood extent

Population Density

- High
- Low

- CAPITAL
- City

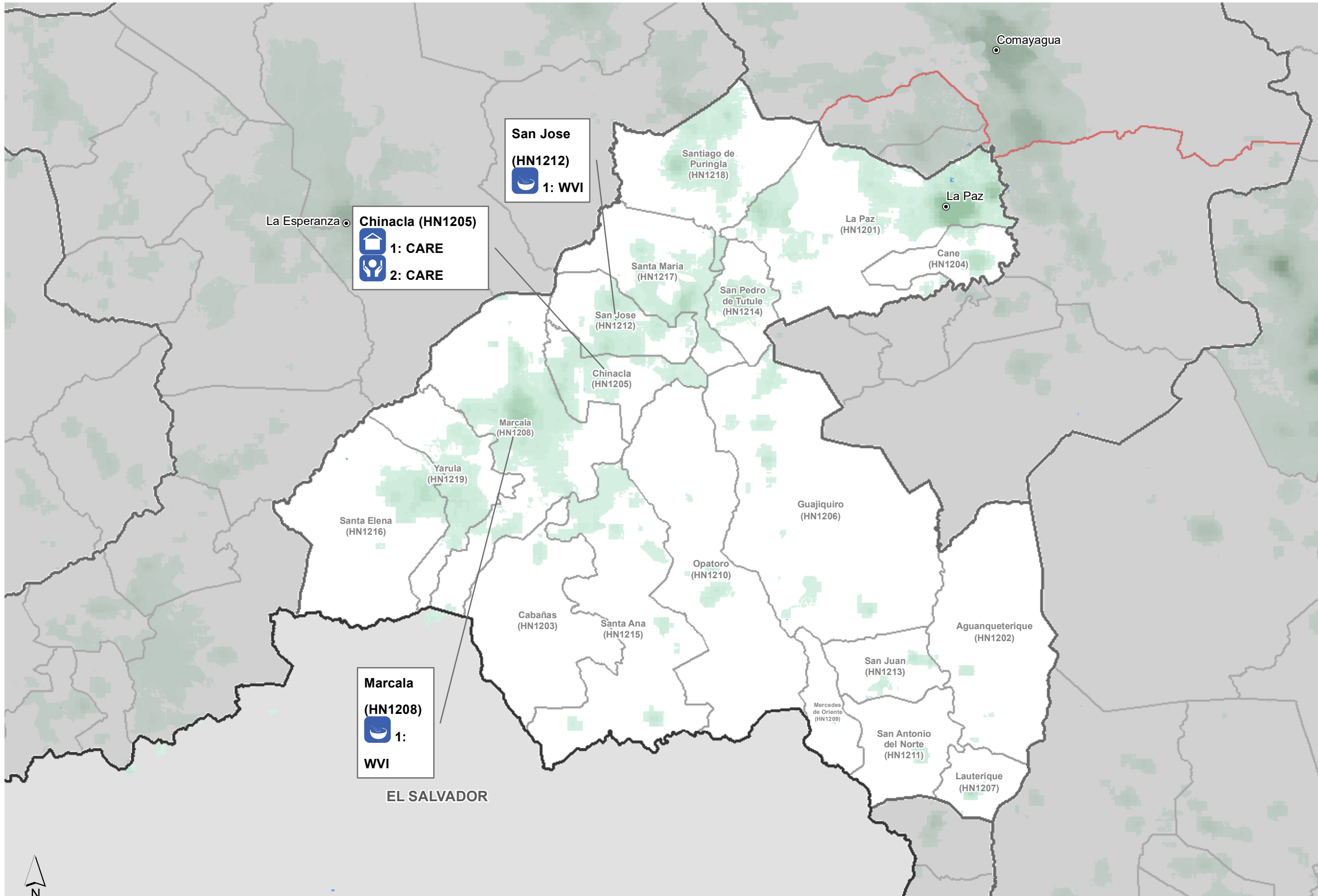
- ### Borders
- INTERNATIONAL
 - DEPARTMENT
 - MUNICIPALITY

50 km
Data Sources
 SINIT, GADM, OCHA ROLAC, Worldpop, OpenStreetMap, WFP, Copernicus

NOTE: Not all activities are being reported at Municipality level. If activities are missing please report them through OCHA ROLAC 3w system.

Map created by MapAction (19/11/2020)

Humanitarian Presence: Who is doing What in each Municipality in Department La Paz (as at 18th Nov 2020)



Organisation	Acronym
ACNUR	ACNUR
ADRA	ADRA
AYUDA EN ACCIÓN	AEA
CARE	CARE
CHILD FUND	CF
CRH	CRH
Cáritas	Cáritas
FAO	FAO
GOAL	GOAL
Habitat	Habitat
Misiones del Agua Int'l	MAI
NRC	NRC
OCHA	OCHA
OHCHR	OHCHR
OIM	OIM
ONU MUJERES	OM
OPS	OPS
PLAN	PLAN
PMA	PMA
SC	SC
Trocaire	Trocaire
UNICEF	UNICEF
WVI	WVI

The labels show the total number of reported activities for each of these sectors, and who is delivering them:

Education	WASH
Protection	Health
Coordination	Food Security
Logistics	Shelter

Severity of Impact

	Critical
	High
	Known flood extent

Population Density

	High
	Low

	CAPITAL
	City

Borders

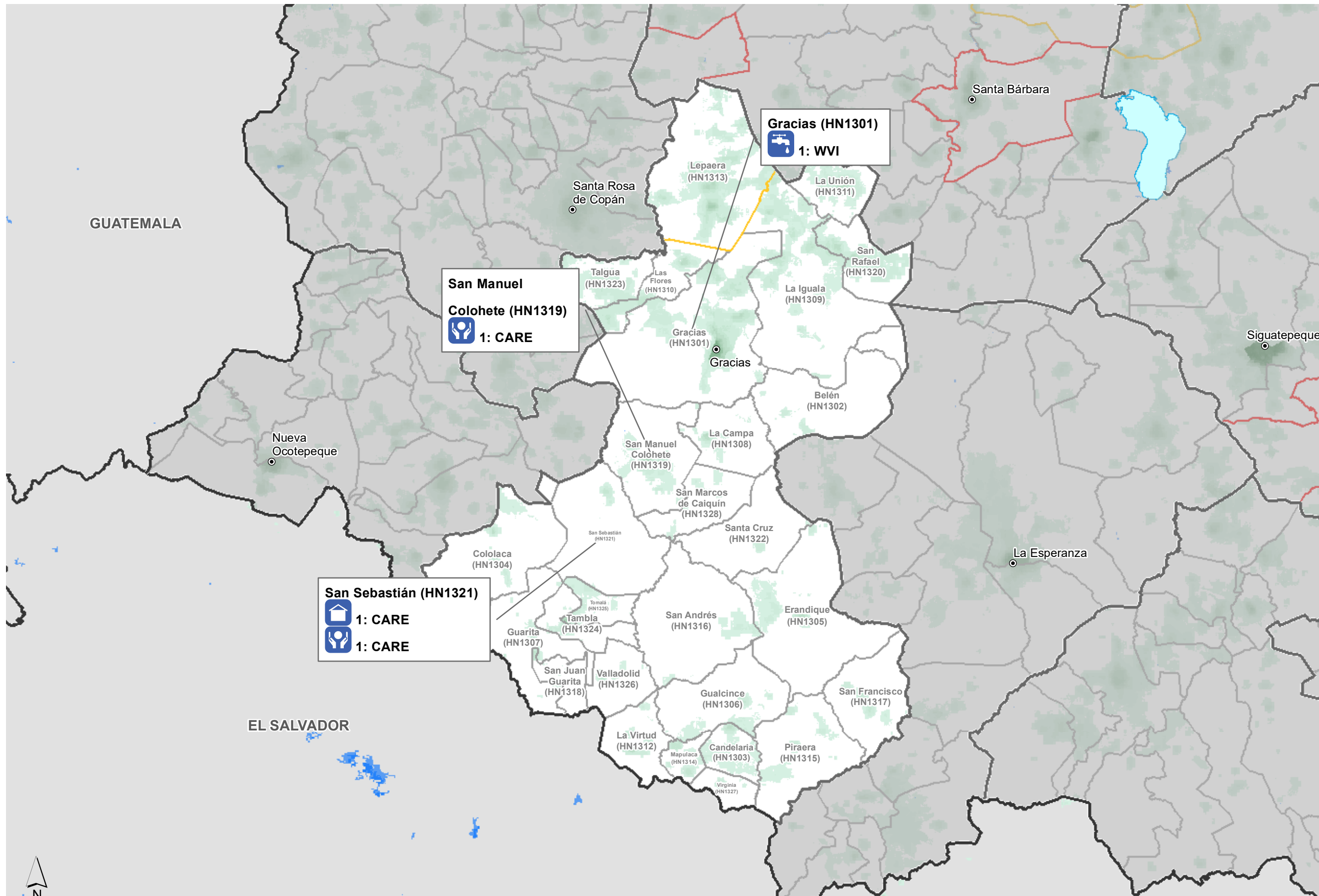
	INTERNATIONAL
	DEPARTMENT
	MUNICIPALITY

30 km

Data Sources
SINIT, GADM, OCHA ROLAC, Worldpop, OpenStreetMap, WFP, Copernicus

NOTE: Not all activities are being reported at Municipality level. If activities are missing please report them through OCHA ROLAC 3w system.

Humanitarian Presence: Who is doing What in each Municipality in Department Lempira (as at 18th Nov 2020)



Organisation	Acronym
ACNUR	ACNUR
ADRA	ADRA
AYUDA EN ACCIÓN	AEA
CARE	CARE
CHILD FUND	CF
CRH	CRH
Cáritas	Cáritas
FAO	FAO
GOAL	GOAL
Habitat	Habitat
Misiones del Agua Int'l	MAI
NRC	NRC
OCHA	OCHA
OHCHR	OHCHR
OIM	OIM
ONU MUJERES	OM
OPS	OPS
PLAN	PLAN
PMA	PMA
SC	SC
Trocaire	Trocaire
UNICEF	UNICEF
WVI	WVI

The labels show the total number of reported activities for each of these sectors, and who is delivering them:

- Education
- WASH
- Protection
- Health
- Coordination
- Food Security
- Logistics
- Shelter

Severity of Impact

- Critical
- High
- Known flood extent

Population Density

- High
- Low

- CAPITAL
- City

Borders

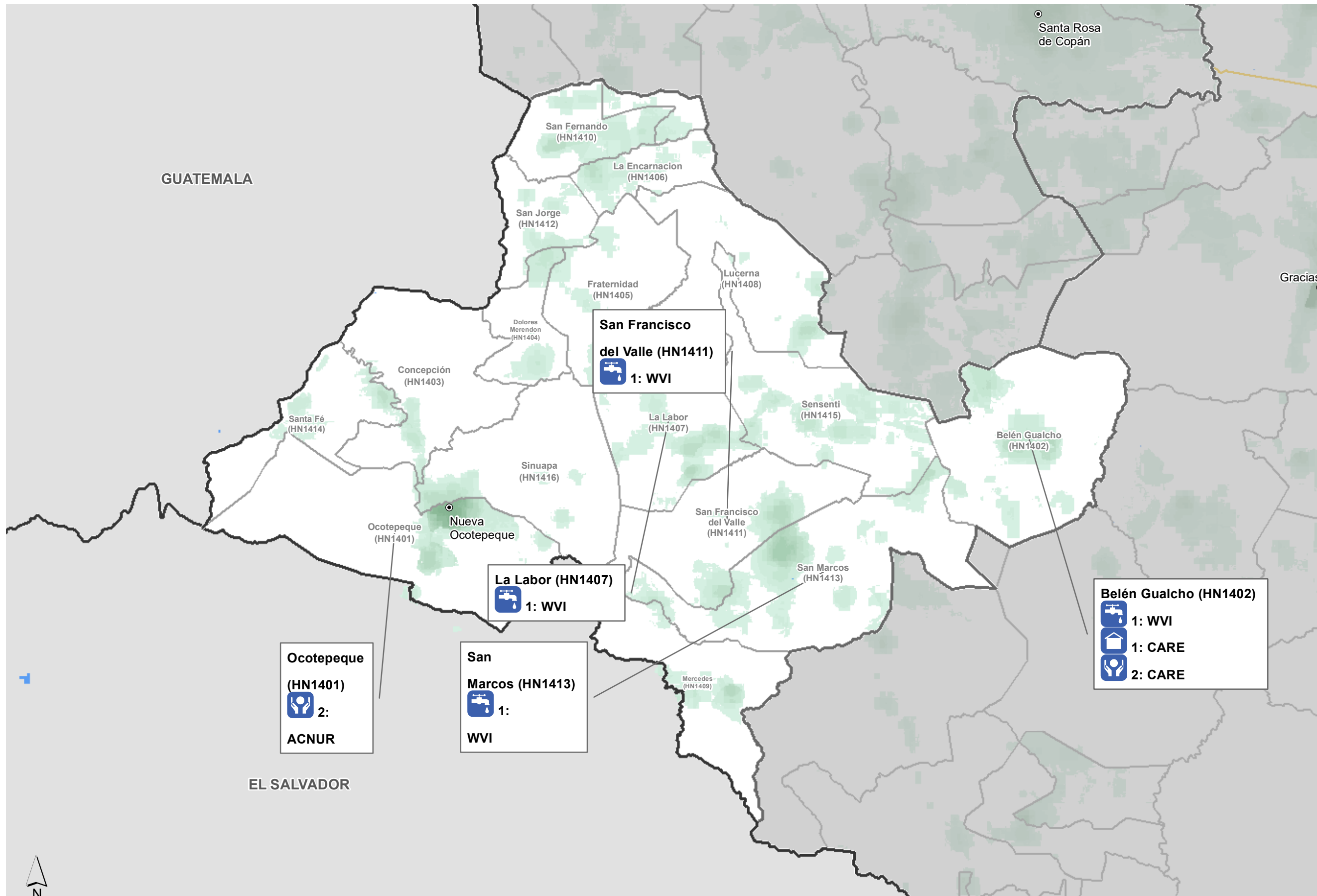
- INTERNATIONAL
- DEPARTMENT
- MUNICIPALITY

60 km
Data Sources
 SINIT, GADM, OCHA ROLAC, Worldpop, OpenStreetMap, WFP, Copernicus

NOTE: Not all activities are being reported at Municipality level. If activities are missing please report them through OCHA ROLAC 3w system.

Map created by MapAction (19/11/2020)

Humanitarian Presence: Who is doing What in each Municipality in Department Ocotepeque (as at 18th Nov 2020)



Organisation	Acronym
ACNUR	ACNUR
ADRA	ADRA
AYUDA EN ACCIÓN	AEA
CARE	CARE
CHILD FUND	CF
CRH	CRH
Cáritas	Cáritas
FAO	FAO
GOAL	GOAL
Habitat	Habitat
Misiones del Agua Int'l	MAI
NRC	NRC
OCHA	OCHA
OHCHR	OHCHR
OIM	OIM
ONU MUJERES	OM
OPS	OPS
PLAN	PLAN
PMA	PMA
SC	SC
Trocaire	Trocaire
UNICEF	UNICEF
WVI	WVI

The labels show the total number of reported activities for each of these sectors, and who is delivering them:

- Education
- WASH
- Protection
- Health
- Coordination
- Food Security
- Logistics
- Shelter

Severity of Impact

- Critical
- High
- Known flood extent

Population Density

- High
- Low

- CAPITAL
- City

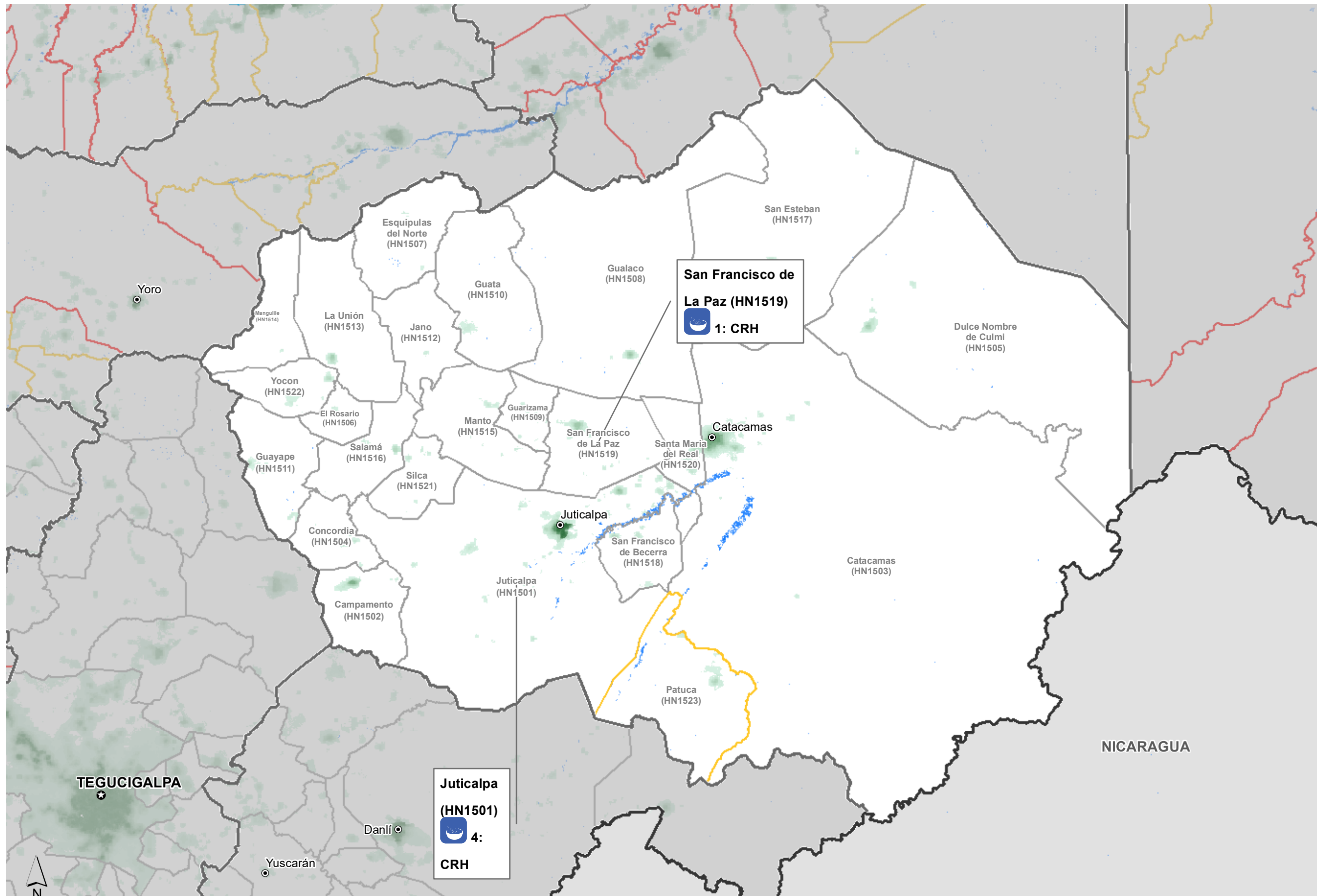
- Borders**
- INTERNATIONAL
 - DEPARTMENT
 - MUNICIPALITY

30
km
Data Sources
SINIT, GADM, OCHA ROLAC, Worldpop, OpenStreetMap, WFP, Copernicus

NOTE: Not all activities are being reported at Municipality level.
If activities are missing please report them through
OCHA ROLAC 3w system.

Map created by MapAction (19/11/2020)

Humanitarian Presence: Who is doing What in each Municipality in Department Olancho (as at 18th Nov 2020)



Organisation	Acronym
ACNUR	ACNUR
ADRA	ADRA
AYUDA EN ACCIÓN	AEA
CARE	CARE
CHILD FUND	CF
CRH	CRH
Cáritas	Cáritas
FAO	FAO
GOAL	GOAL
Habitat	Habitat
Misiones del Agua Int'l	MAI
NRC	NRC
OCHA	OCHA
OHCHR	OHCHR
OIM	OIM
ONU MUJERES	OM
OPS	OPS
PLAN	PLAN
PMA	PMA
SC	SC
Trocaire	Trocaire
UNICEF	UNICEF
WVI	WVI

The labels show the total number of reported activities for each of these sectors, and who is delivering them:

Education	WASH
Protection	Health
Coordination	Food Security
Logistics	Shelter

Severity of Impact

Critical
High
Known flood extent

Population Density

High
Low

CAPITAL
City

Borders

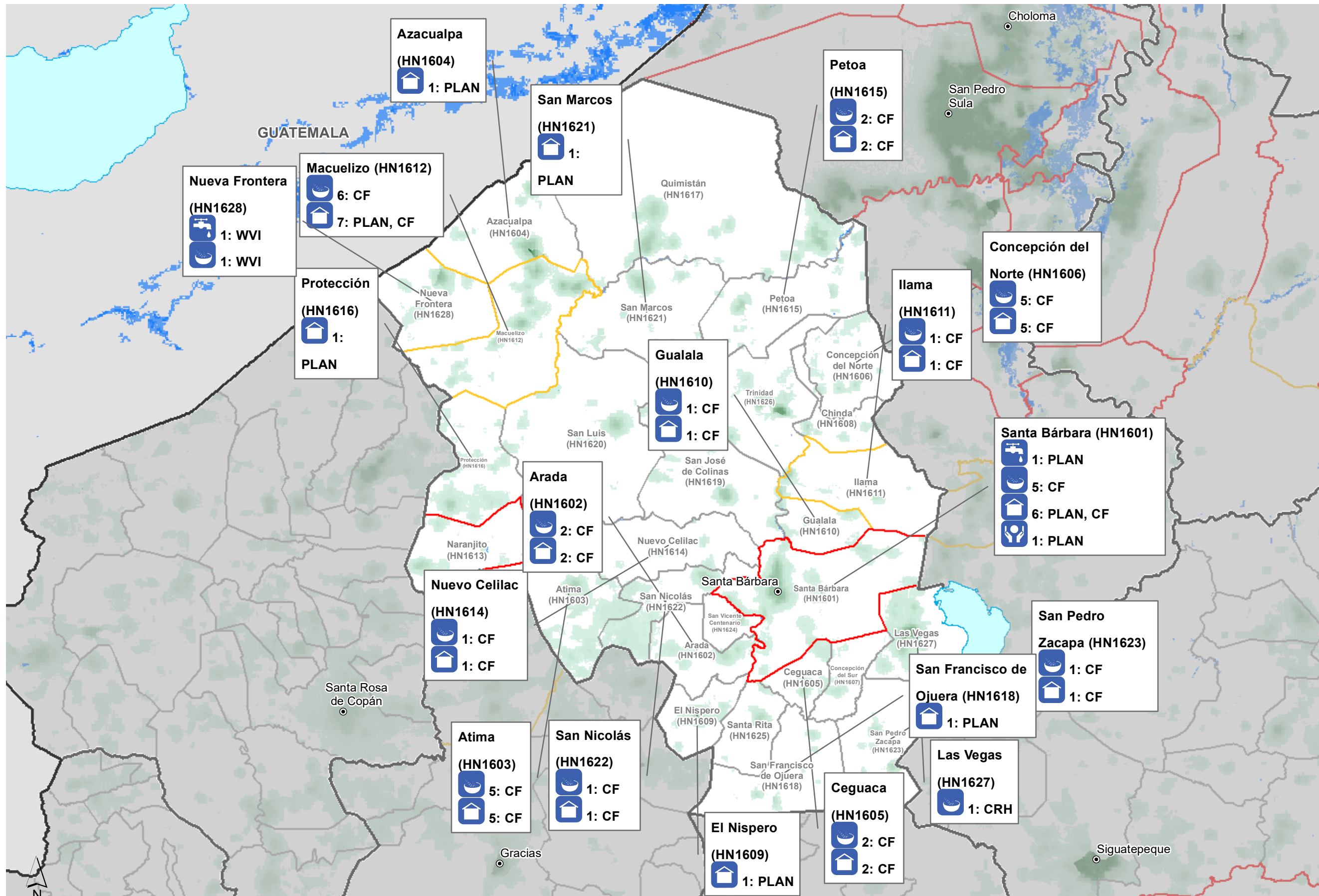
INTERNATIONAL
DEPARTMENT
MUNICIPALITY

100 km
Data Sources
 SINIT, GADM, OCHA ROLAC, Worldpop, OpenStreetMap, WFP, Copernicus

NOTE: Not all activities are being reported at Municipality level. If activities are missing please report them through OCHA ROLAC 3w system.

Map created by MapAction (19/11/2020)

Humanitarian Presence: Who is doing What in each Municipality in Department Santa Bárbara (as at 18th Nov 2020)



Organisation	Acronym
ACNUR	ACNUR
ADRA	ADRA
AYUDA EN ACCIÓN	AEA
CARE	CARE
CHILD FUND	CF
CRH	CRH
Cáritas	Cáritas
FAO	FAO
GOAL	GOAL
Habitat	Habitat
Misiones del Agua Int'l	MAI
NRC	NRC
OCHA	OCHA
OHCHR	OHCHR
OIM	OIM
ONU MUJERES	OM
OPS	OPS
PLAN	PLAN
PMA	PMA
SC	SC
Trocaire	Trocaire
UNICEF	UNICEF
WVI	WVI

The labels show the total number of reported activities for each of these sectors, and who is delivering them:

	Education		WASH
	Protection		Health
	Coordination		Food Security
	Logistics		Shelter

Severity of Impact

	Critical
	High
	Known flood extent

Population Density

	High
	Low

	CAPITAL
	City

Borders

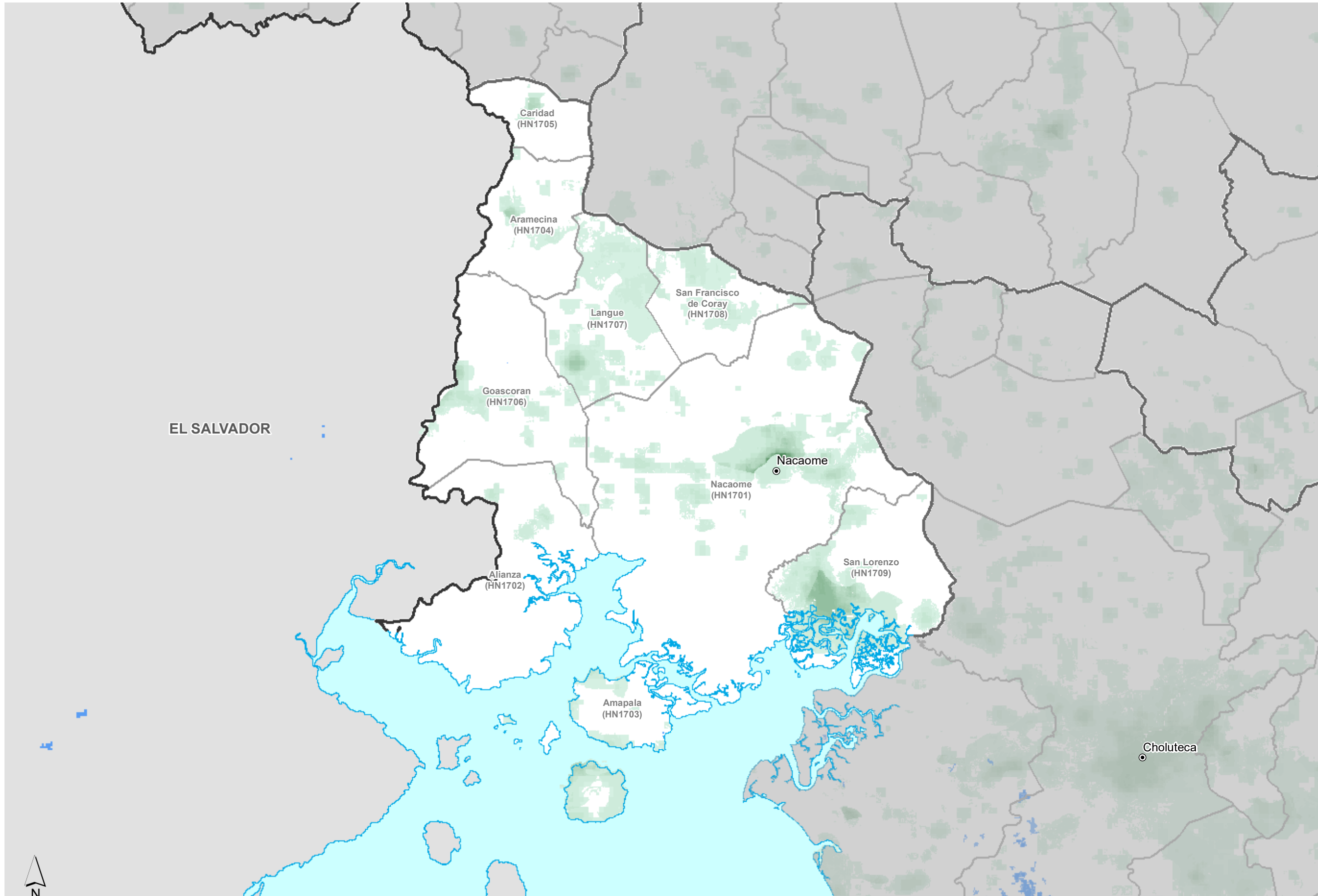
	INTERNATIONAL
	DEPARTMENT
	MUNICIPALITY



Data Sources: SINIT, GADM, OCHA ROLAC, Worldpop, OpenStreetMap, WFP, Copernicus

NOTE: Not all activities are being reported at Municipality level. If activities are missing please report them through OCHA ROLAC 3w system.

Map created by MapAction (19/11/2020)



Organisation	Acronym
ACNUR	ACNUR
ADRA	ADRA
AYUDA EN ACCIÓN	AEA
CARE	CARE
CHILD FUND	CF
CRH	CRH
Cáritas	Cáritas
FAO	FAO
GOAL	GOAL
Habitat	Habitat
Misiones del Agua Int'l	MAI
NRC	NRC
OCHA	OCHA
OHCHR	OHCHR
OIM	OIM
ONU MUJERES	OM
OPS	OPS
PLAN	PLAN
PMA	PMA
SC	SC
Trocaire	Trocaire
UNICEF	UNICEF
WVI	WVI

The labels show the total number of reported activities for each of these sectors, and who is delivering them:

- Education
- WASH
- Protection
- Health
- Coordination
- Food Security
- Logistics
- Shelter

Severity of Impact

- Critical
- High
- Known flood extent

Population Density

- High
- Low

- CAPITAL**
- City

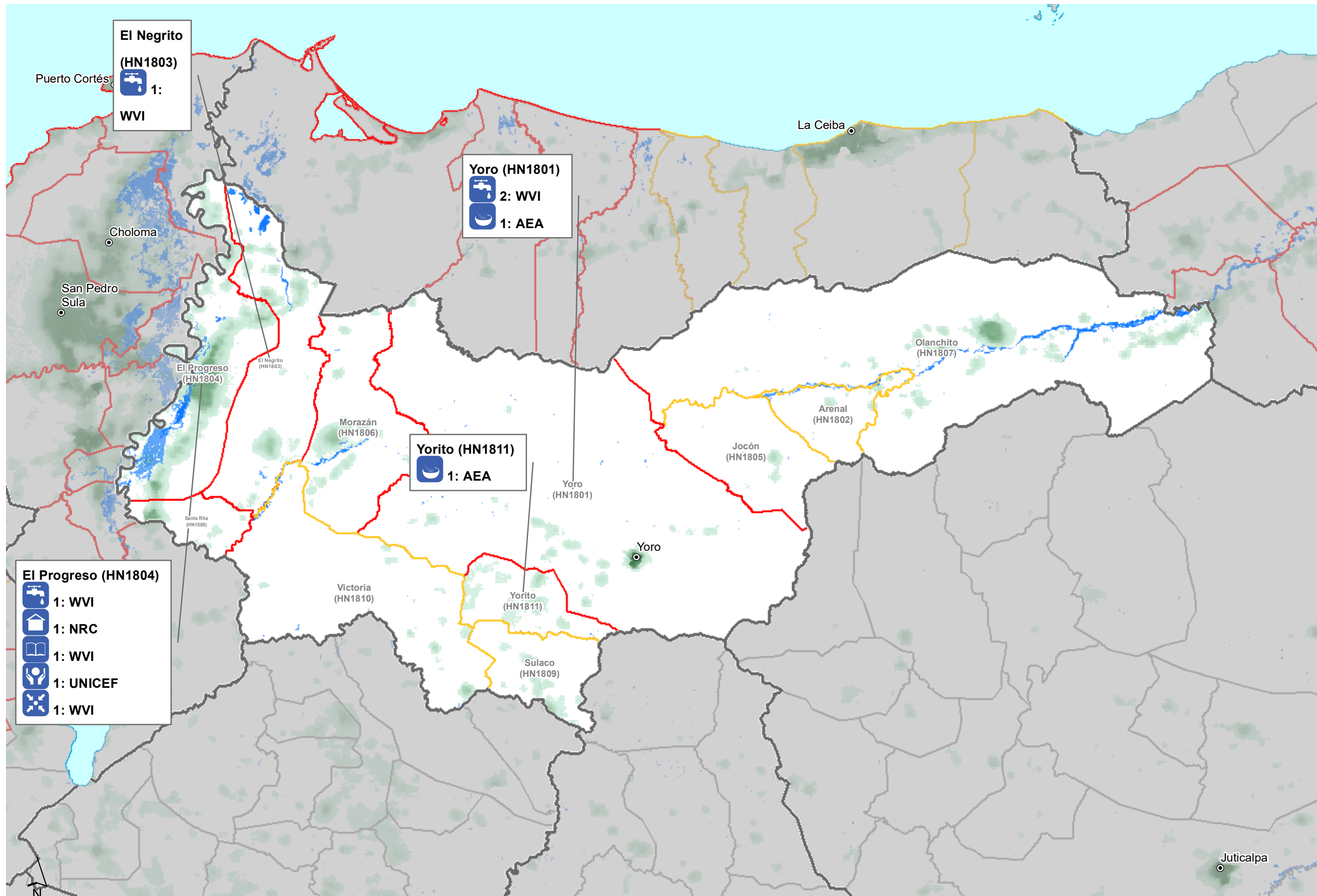
- Borders**
- INTERNATIONAL
 - DEPARTMENT
 - MUNICIPALITY

30 km
Data Sources
 SINIT, GADM, OCHA ROLAC, Worldpop, OpenStreetMap, WFP, Copernicus

NOTE: Not all activities are being reported at Municipality level. If activities are missing please report them through OCHA ROLAC 3w system.

Map created by MapAction (19/11/2020)

Humanitarian Presence: Who is doing What in each Municipality in Department Yoro (as at 18th Nov 2020)



Organisation	Acronym
ACNUR	ACNUR
ADRA	ADRA
AYUDA EN ACCIÓN	AEA
CARE	CARE
CHILD FUND	CF
CRH	CRH
Cáritas	Cáritas
FAO	FAO
GOAL	GOAL
Habitat	Habitat
Misiones del Agua Int'l	MAI
NRC	NRC
OCHA	OCHA
OHCHR	OHCHR
OIM	OIM
ONU MUJERES	OM
OPS	OPS
PLAN	PLAN
PMA	PMA
SC	SC
Trocaire	Trocaire
UNICEF	UNICEF
WVI	WVI

The labels show the total number of reported activities for each of these sectors, and who is delivering them:

- Education
- WASH
- Protection
- Health
- Coordination
- Food Security
- Logistics
- Shelter

Severity of Impact

- Critical
- High
- Known flood extent

Population Density

- High
- Low

- CAPITAL**
- City

- Borders**
- INTERNATIONAL
 - DEPARTMENT
 - MUNICIPALITY

70 km
Data Sources
 SINIT, GADM, OCHA ROLAC, Worldpop, OpenStreetMap, WFP, Copernicus

NOTE: Not all activities are being reported at Municipality level. If activities are missing please report them through OCHA ROLAC 3w system.

Map created by MapAction (19/11/2020)