



MapAction

Tanzania Earthquake response Baseline Population (Census of 2012)

Map shows the affected Wards with total population from the 2012 Census extracted from NBS report

Earthquake Epicentre

Unaffected

Affected

2012 Population

2012 Population

2,591 - 7,500

7,501 - 10,000

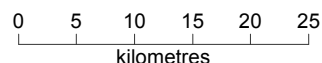
10,001 - 15,000

15,001 - 22,500

22,501 - 35,000

Tanzania

Surrounding Countries



1: 625,000 (At A3)

Data sources

Situational data: Tanzania Govt
Boundaries: UNOCHA
Population data: National Bureau of Statistics (NBS) 2012 census
Physical features: dataverse

Created 25 Sep 2016 / 10:00 UTC +3:00

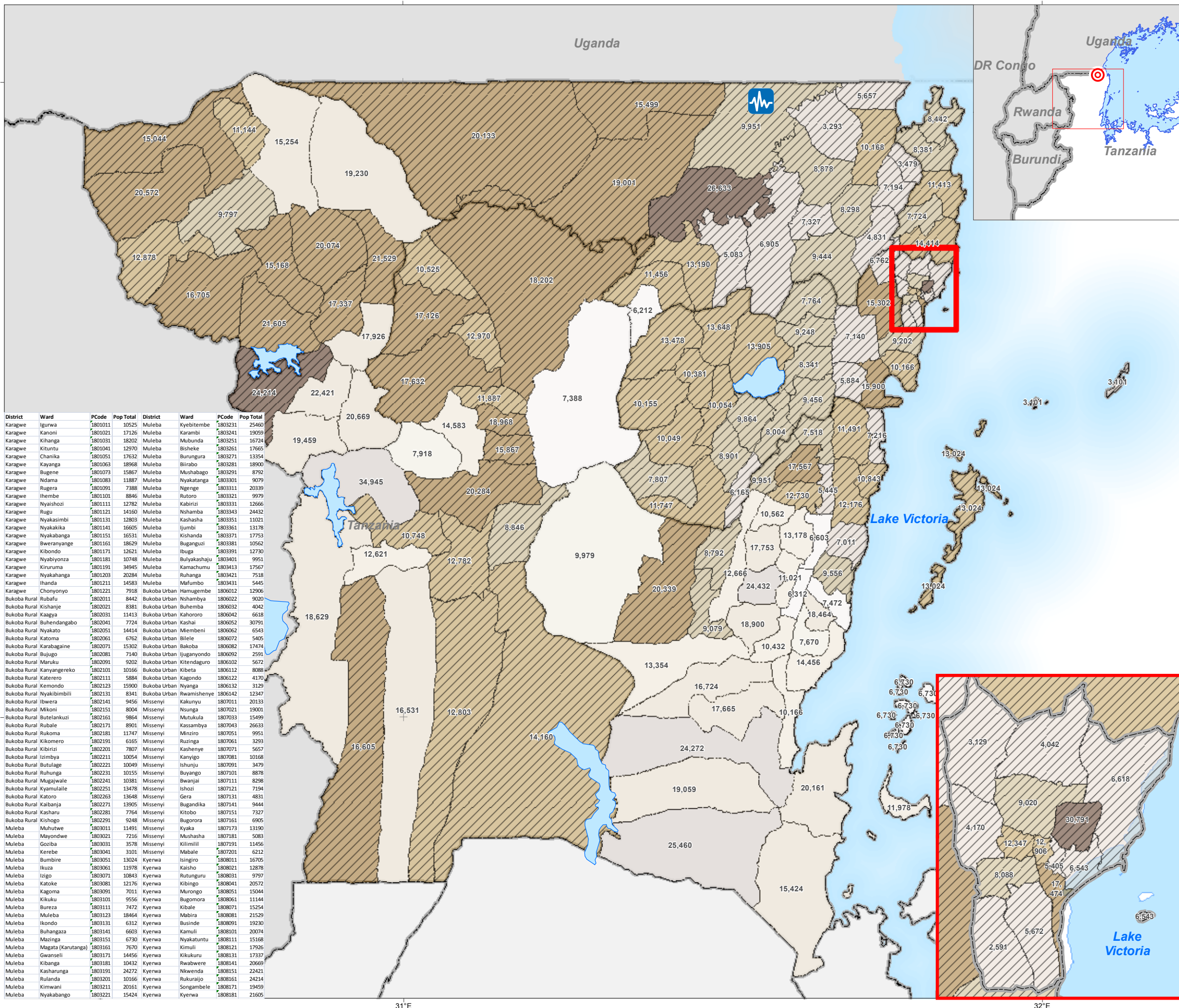
Map Document MA005_Affected_Wards_Popn_v2

Projection & Datum UTM Zone 36S / WGS 1984

Glide Number EQ-2016-000098-TZA

Produced by MapAction
tanzania@mapaction.org
www.mapaction.org

Supported by DFID and the Ministry of Foreign Affairs of the Netherlands. The depiction / use of boundaries, names and associated data shown here do not imply endorsement or acceptance by MapAction.



District	Ward	PCode	Pop Total	District	Ward	PCode	Pop Total
Karagwe	Igurwa	1801011	10525	Muleba	Kyebitembe	1803231	25460
Karagwe	Kanoni	1801021	17126	Muleba	Karambi	1803241	19059
Karagwe	Kihanga	1801031	18202	Muleba	Mubunda	1803251	16724
Karagwe	Kituntu	1801041	12970	Muleba	Bisheke	1803261	17665
Karagwe	Chanika	1801051	17632	Muleba	Burungura	1803271	13354
Karagwe	Kayanga	1801063	18968	Muleba	Biirabo	1803281	18900
Karagwe	Bugene	1801073	15867	Muleba	Mushabago	1803291	8792
Karagwe	Ndama	1801083	11887	Muleba	Nyakatanga	1803301	9079
Karagwe	Rugera	1801091	7388	Muleba	Ngenge	1803311	20339
Karagwe	Ihembe	1801101	8846	Muleba	Rutoro	1803321	9979
Karagwe	Nyaishozi	1801111	12782	Muleba	Kabirizi	1803331	12666
Karagwe	Rugu	1801121	14160	Muleba	Nshamba	1803343	24432
Karagwe	Nyakasimbi	1801131	12803	Muleba	Kashasha	1803351	11021
Karagwe	Nyakakika	1801141	16605	Muleba	Ijumbi	1803361	13178
Karagwe	Nyakabanga	1801151	16531	Muleba	Kishanda	1803371	17753
Karagwe	Bweranyange	1801161	18629	Muleba	Buganguzi	1803381	10562
Karagwe	Kibondo	1801171	12621	Muleba	Ibuga	1803391	12730
Karagwe	Nyabiyonza	1801181	10748	Muleba	Bulyakashaju	1803401	9951
Karagwe	Kiruruma	1801191	34945	Muleba	Kamachumu	1803413	17567
Karagwe	Nyakahanga	1801203	20284	Muleba	Ruhanga	1803421	7518
Karagwe	Ihandu	1801211	14583	Muleba	Mufumbo	1803431	5445
Karagwe	Chonyonyo	1801221	7918	Bukoba Urban	Hemugembe	1806012	12906
Bukoba Rural	Rubafu	1802011	8442	Bukoba Urban	Nshamba	1806022	9020
Bukoba Rural	Kishanje	1802021	8381	Bukoba Urban	Buhemba	1806032	4042
Bukoba Rural	Kaaya	1802031	11413	Bukoba Urban	Kahororo	1806042	6618
Bukoba Rural	Buhendangabo	1802041	7724	Bukoba Urban	Kashal	1806052	30791
Bukoba Rural	Nyakato	1802051	14414	Bukoba Urban	Miembeni	1806062	6543
Bukoba Rural	Katoma	1802061	6762	Bukoba Urban	Bilele	1806072	5405
Bukoba Rural	Karabagine	1802071	15302	Bukoba Urban	Bakoba	1806082	17474
Bukoba Rural	Bujigo	1802081	7140	Bukoba Urban	Ijuganyondo	1806092	2591
Bukoba Rural	Maruku	1802091	9202	Bukoba Urban	Kitendaguro	1806102	5672
Bukoba Rural	Kanyangereko	1802101	10166	Bukoba Urban	Kibeta	1806112	8088
Bukoba Rural	Katerero	1802111	5884	Bukoba Urban	Kagondo	1806122	4170
Bukoba Rural	Kemondo	1802123	15900	Bukoba Urban	Nyanga	1806132	3129
Bukoba Rural	Nyakibimbili	1802131	8341	Bukoba Urban	Rwamishenye	1806142	12347
Bukoba Rural	Ibwera	1802141	9456	Missenyi	Kakunyuu	1807011	20133
Bukoba Rural	Mikoni	1802151	8004	Missenyi	Nsungu	1807021	19001
Bukoba Rural	Butelankuzi	1802161	9864	Missenyi	Mutukula	1807033	15499
Bukoba Rural	Rubale	1802171	8901	Missenyi	Kassambya	1807043	26633
Bukoba Rural	Rukoma	1802181	11747	Missenyi	Minziro	1807051	9951
Bukoba Rural	Kikomero	1802191	6165	Missenyi	Ruzinga	1807061	3293
Bukoba Rural	Kibirizi	1802201	7807	Missenyi	Kashenye	1807071	5657
Bukoba Rural	Izimbya	1802211	10054	Missenyi	Kanyigo	1807081	10168
Bukoba Rural	Butulage	1802221	10049	Missenyi	Ishunju	1807091	3479
Bukoba Rural	Ruhunga	1802231	10155	Missenyi	Buyango	1807101	8878
Bukoba Rural	Mugajwale	1802241	10381	Missenyi	Bwanjai	1807111	8298
Bukoba Rural	Kyamuliale	1802251	13478	Missenyi	Ishozi	1807121	7194
Bukoba Rural	Katoro	1802263	13648	Missenyi	Gera	1807131	4831
Bukoba Rural	Kaibanja	1802271	13905	Missenyi	Bugandika	1807141	9444
Bukoba Rural	Kasharu	1802281	7764	Missenyi	Kitobo	1807151	7327
Bukoba Rural	Kishogo	1802291	9248	Missenyi	Bugorora	1807161	6905
Muleba	Muhutwe	1803011	11491	Missenyi	Kyaka	1807173	13190
Muleba	Mayondwe	1803021	7216	Missenyi	Mushasha	1807181	5083
Muleba	Goziba	1803031	3578	Missenyi	Kilimilili	1807191	11456
Muleba	Kerebe	1803041	3101	Missenyi	Mabale	1807201	6212
Muleba	Bumbire	1803051	13024	Kyerwa	Isingiro	1808011	16705
Muleba	Ikuza	1803061	11978	Kyerwa	Kaisho	1808021	12878
Muleba	Izigo	1803071	10843	Kyerwa	Rutunguru	1808031	9797
Muleba	Katoke	1803081	12176	Kyerwa	Kibingo	1808041	20572
Muleba	Kagoma	1803091	7011	Kyerwa	Murongo	1808051	15044
Muleba	Kikuku	1803101	9556	Kyerwa	Bugomora	1808061	11144
Muleba	Bureza	1803111	7472	Kyerwa	Kibale	1808071	15254
Muleba	Muleba	1803123	18464	Kyerwa	Mabira	1808081	21529
Muleba	Ikondo	1803131	6312	Kyerwa	Businde	1808091	19230
Muleba	Buhangaza	1803141	6603	Kyerwa	Kamuli	1808101	20074
Muleba	Mazinga	1803151	6730	Kyerwa	Nyakatuntu	1808111	15168
Muleba	Magata (Karutanga)	1803161	7670	Kyerwa	Kimuli	1808121	17926
Muleba	Gwanseli	1803171	14456	Kyerwa	Kikukuru	1808131	17337
Muleba	Kibanga	1803181	10432	Kyerwa	Rwabwere	1808141	20669
Muleba	Kasharunga	1803191	24272	Kyerwa	Nkwenda	1808151	22421
Muleba	Rulanda	1803201	10166	Kyerwa	Rukurajo	1808161	24214
Muleba	Kimwani	1803211	20161	Kyerwa	Songambebe	1808171	19459
Muleba	Nyakabango	1803221	15424	Kyerwa	Kyerwa	1808181	21605