



MapAction

Philippines: Typhoon Haiyan (Yolanda): Analysis of cash transfer programmes and market assessments

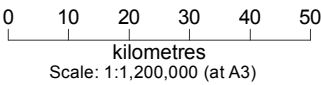
Who-what-where snapshot of cash transfer relief assistance taken from OCHA 3W matrix released on 3rd and 7th December 2013. Combined with market assessment data. Symbols indicate status of cash programming.

Activity Status of cash programme

- Completed
- Ongoing
- Planned

Market assessment completed

- in this municipality
- Municipality

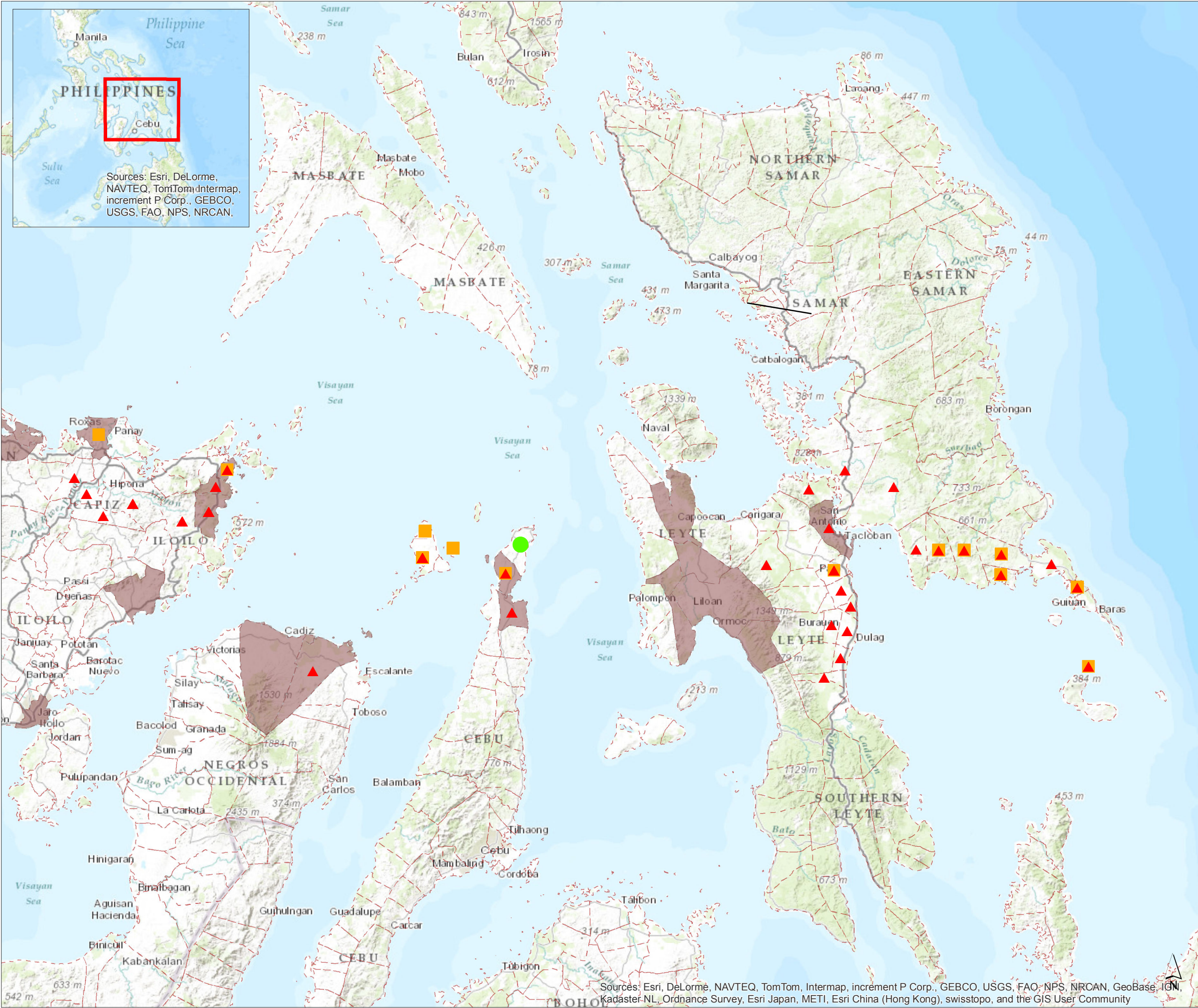


Data sources
Situational: OCHA
Boundaries: GADM

Created 9 Dec 2013 / 10:00 UTC +8
Map Document MA1014_CashMarketAnalysis_v01
Projection / Datum WGS 1984 UTM Zone 51N
Glide Number TC-2013-000139-PHL

The depiction and use of boundaries, names and associated data shown here do not imply endorsement or acceptance by MapAction.

Produced by MapAction
www.mapaction.org
tacloban@mapaction.org



Sources: Esri, DeLorme, NAVTEQ, TomTom, Intermap, increment P Corp., GEBCO, USGS, FAO, NPS, NRCAN, GeoBase, IGN, Kadaster NL, Ordnance Survey, Esri Japan, METI, Esri China (Hong Kong), swisstopo, and the GIS User Community