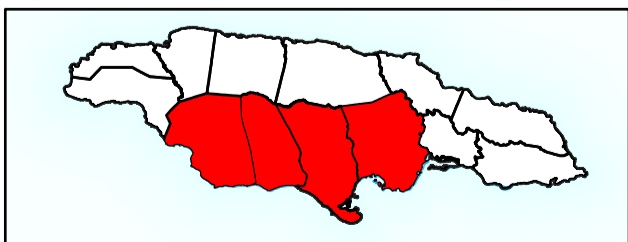
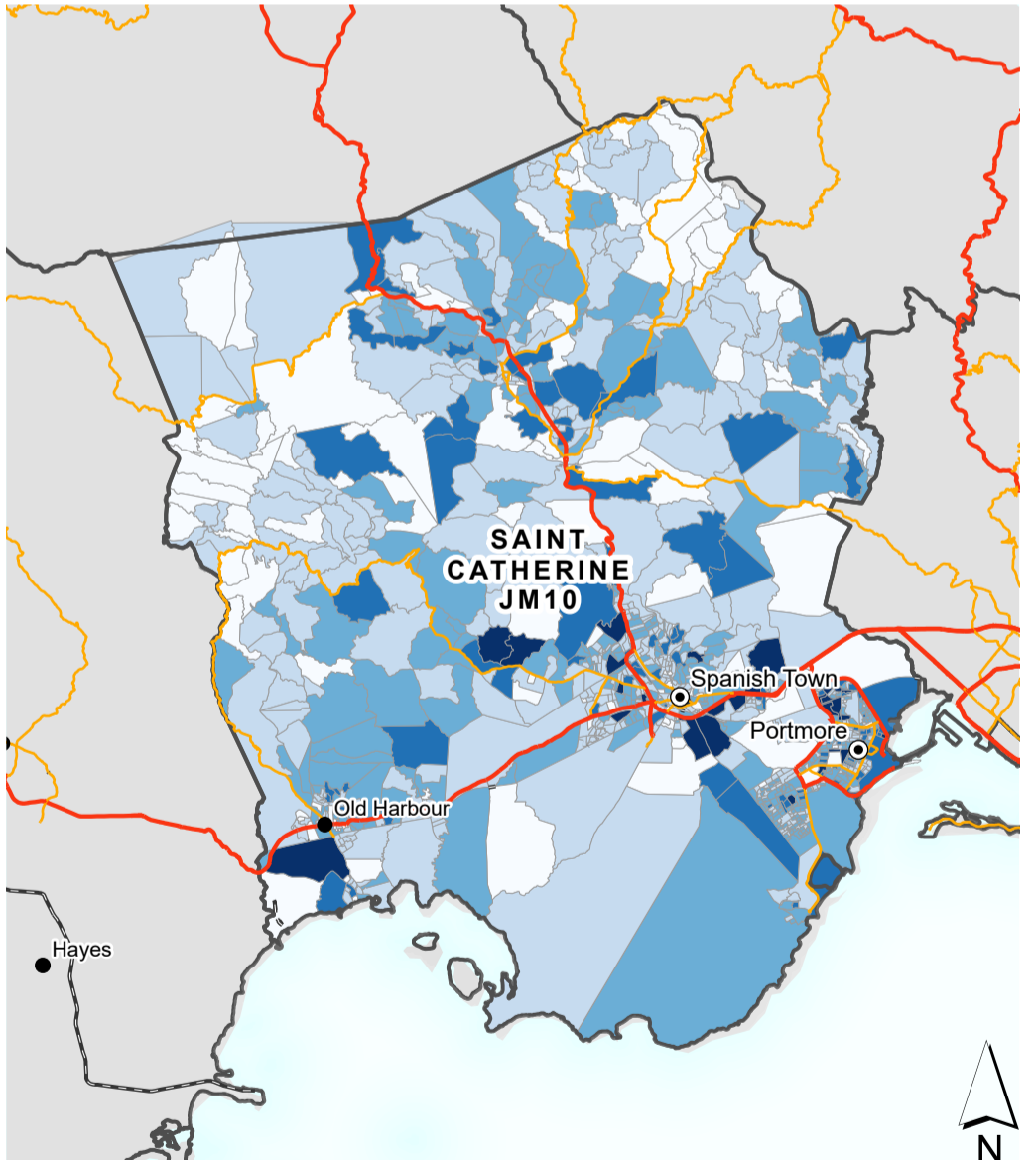
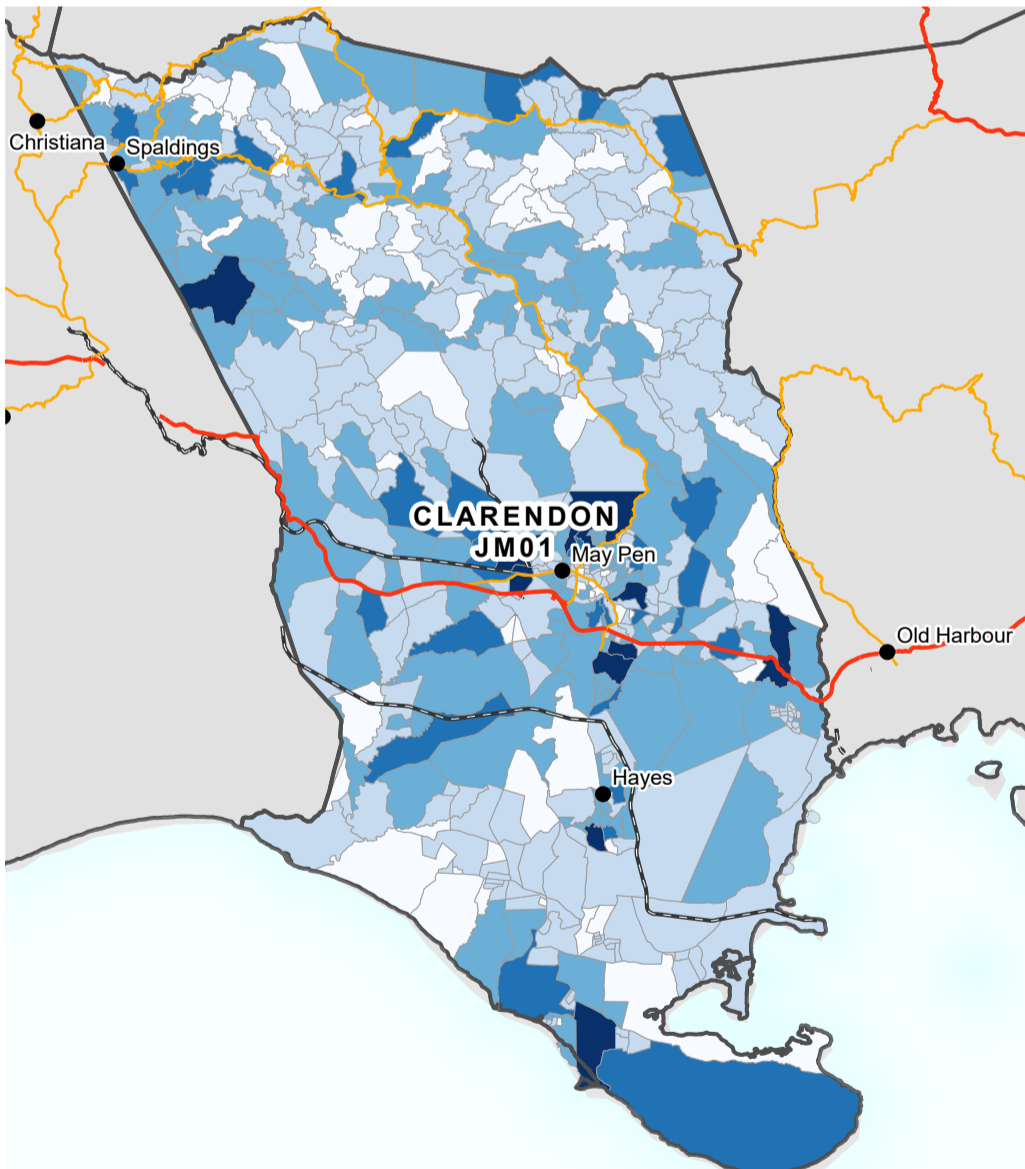
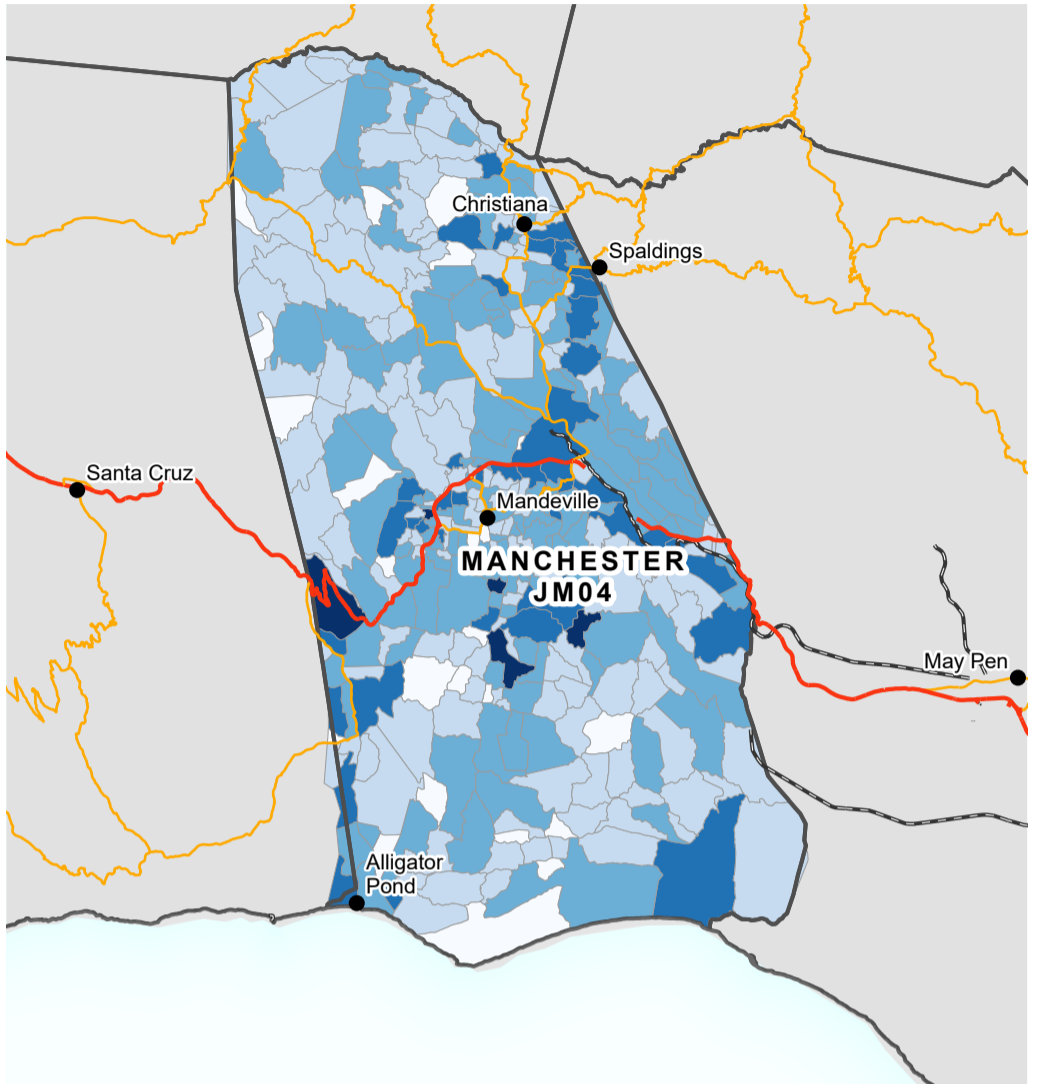
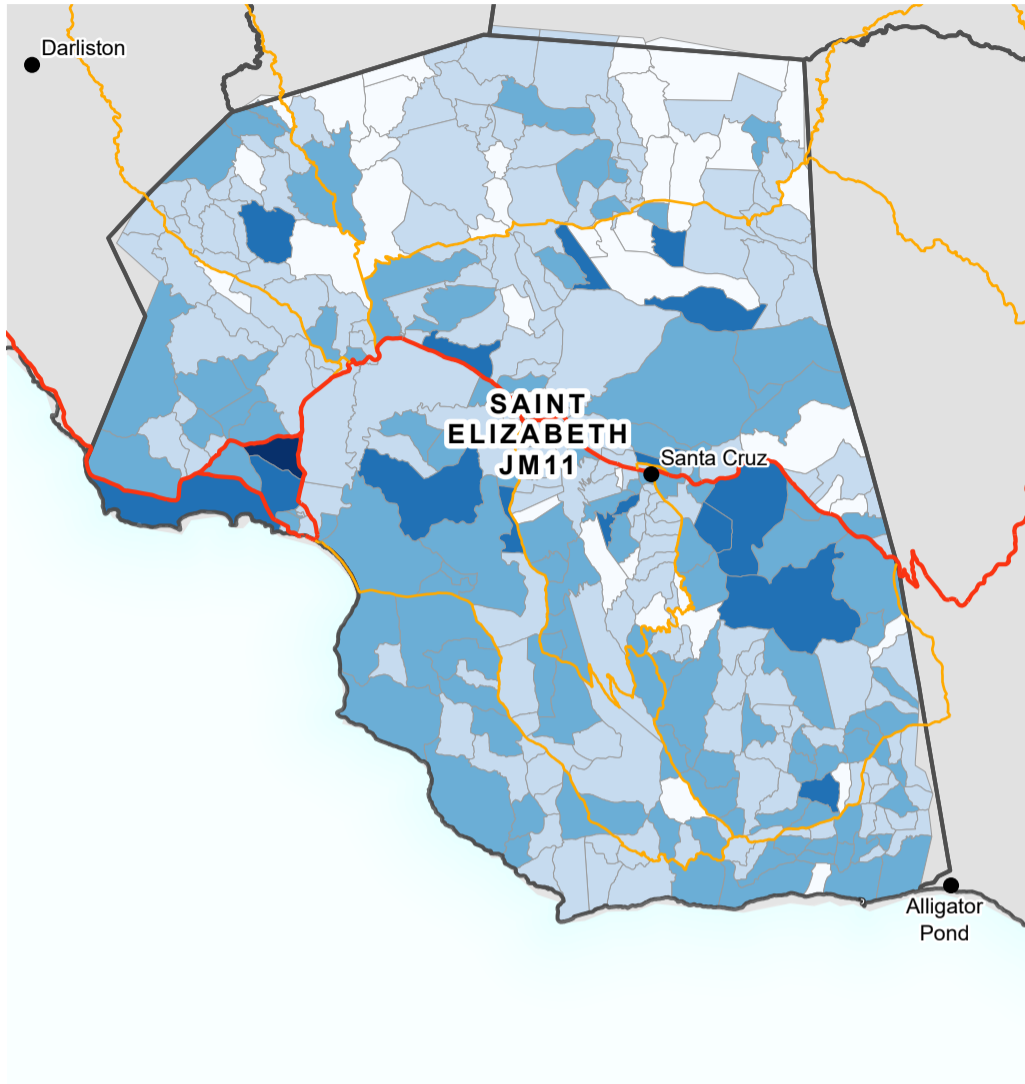


Administrative 3 level baseline population for assessed parishes

These four parish maps show baseline population from data supplied by ODPEM at administrative level 3. The parishes were those selected for assessment by the UN and agencies.



- Settlement**
- City
  - Town
- Transport**
- Primary road
  - Secondary road
  - Railway

- Parish**
- Population by admin 3**
- 0-250
  - 251-500
  - 501-750
  - 751-1000
  - 1001-2208

25

km

**Data Sources**

Admin Population: ODPEM  
 Boundaries: OCHA, GADM, ODPEM  
 Base map: OpenStreetMap contributors

Map created by MapAction (11/07/2024)

Supported by the German Federal Foreign Office.

The boundaries and names shown and the designations used on this map do not imply official endorsement or acceptance by the United Nations or MapAction.