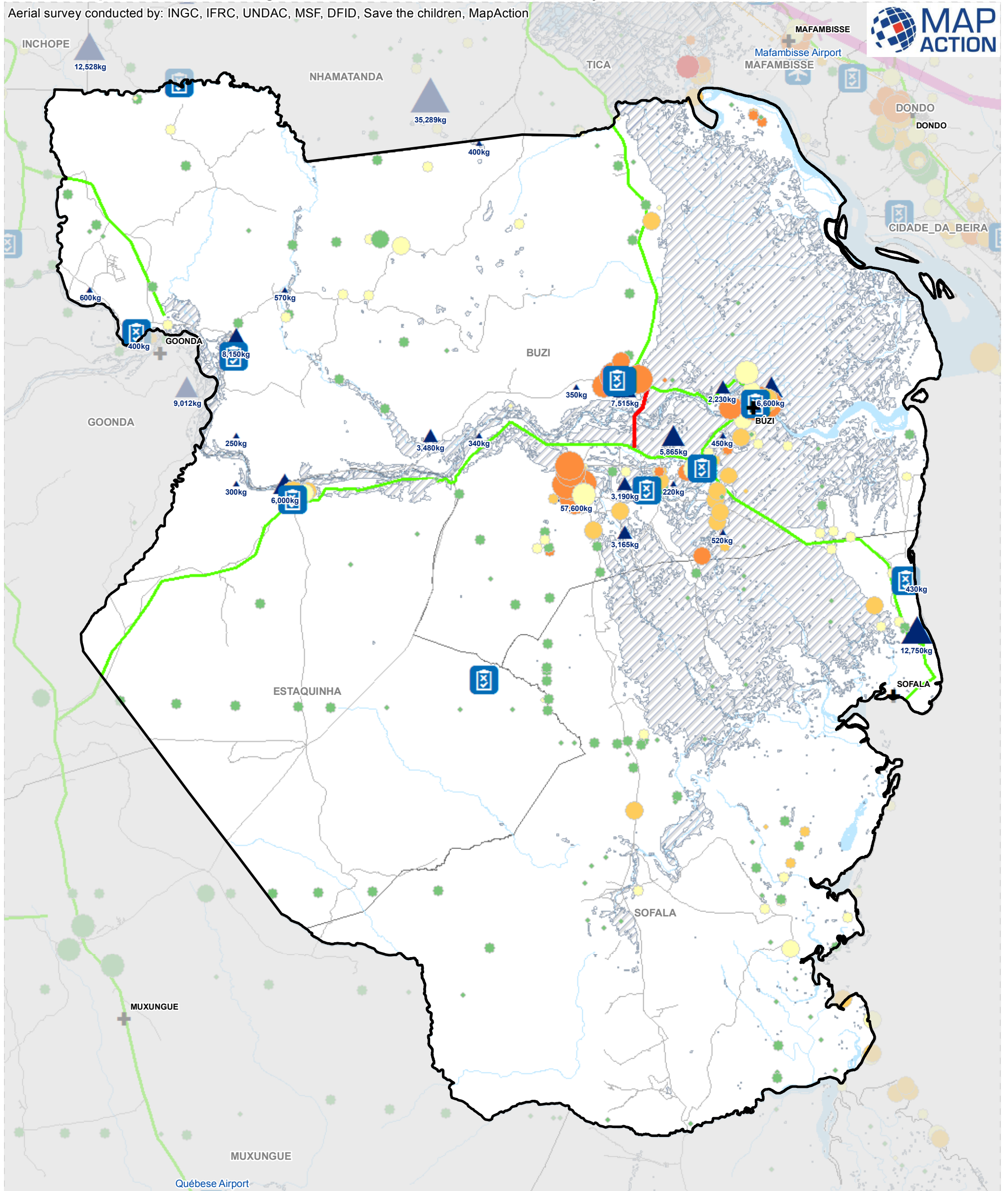


Mozambique: Buzi District - ground and aerial assessment survey locations

MA140a v01

Aerial survey conducted by: INGC, IFRC, UNDAC, MSF, DFID, Save the children, MapAction



	Assessment Location		Airports	Estimated Population	Severity scale
	Storm track	Road Status (8th April)		Critical	
	Waterbodies		Restricted		
	Rivers		Open		
	Flood Extent: 19.03.2019		Railway on Rehab		
	Postos		Unknown Road Status		
	Food Drops Weight (kg)				
	150 - 1,700				
	1,701 - 4,800				
	4,801 - 9,000				
	9,013 - 12,950				
	12,951 - 57,600				

Data Sources: OSM, INGC, ACAPS, WFP
Map created by MapAction