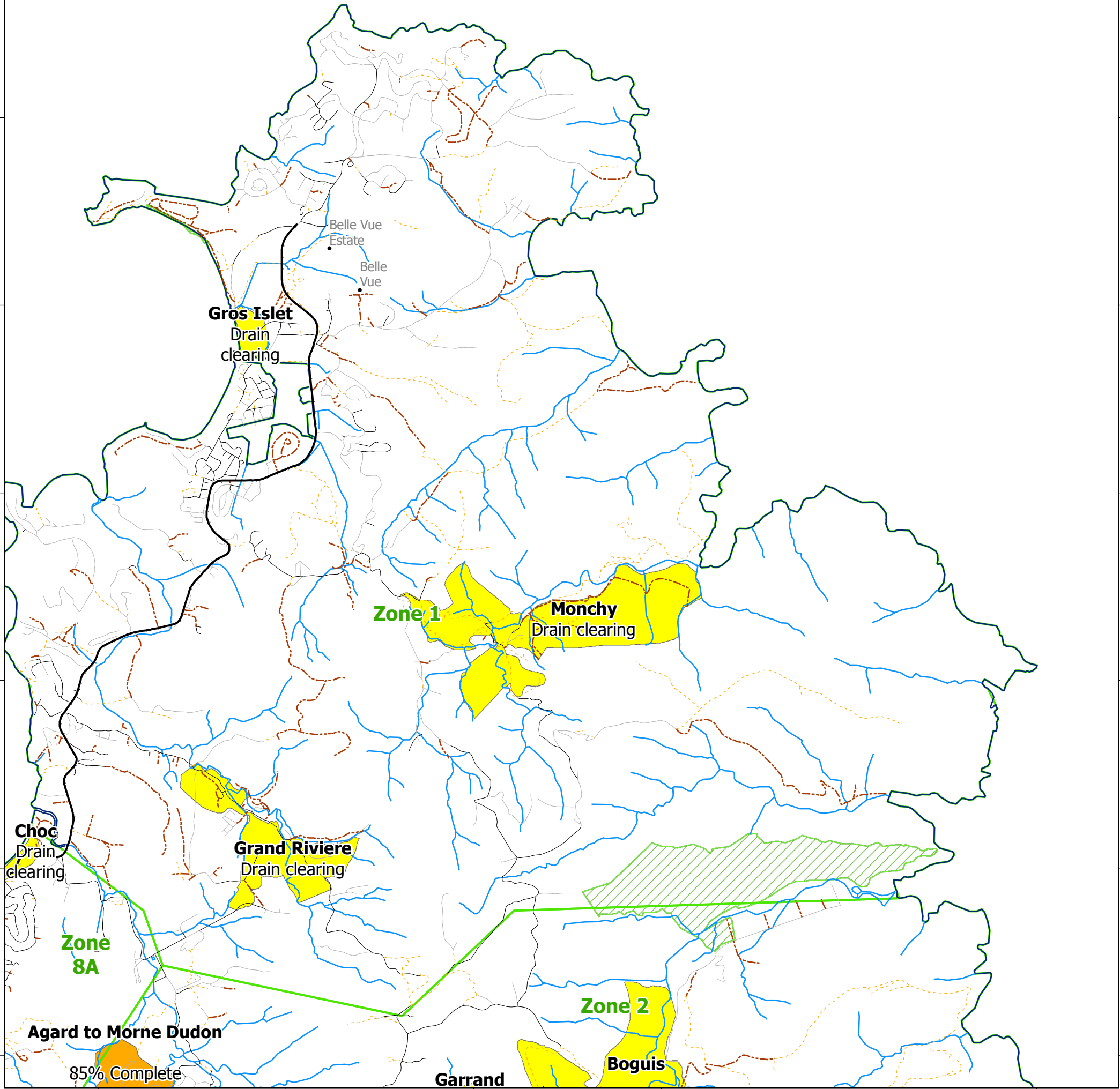


60°58'W 60°57'W 60°56'W 60°55'W 60°54'W 60°53'W

14°7'N
14°6'N
14°5'N
14°4'N
14°3'N
14°2'N
14°1'N



60°58'W 60°57'W 60°56'W 60°55'W 60°54'W 60°53'W



MapAction
Saint Lucia
Tropical Cyclone
Transport Sector
Damage
(as of 11 Nov 2010)

Map shows the location of Transport Sector Damage throughout the island. Also shown are the Ministry of Communications, Works, Transport & Public Utilities Map Zones along with road, river and the forest reserve information.

Data sources:
Survey and Mapping Department, Ministry of Physical Development and Forestry Department, Ministry of Agriculture, Forestry, Fisheries and Lands
Ministry of Communications, Works, Transport and Public Utilities
National Emergency Management Organisation (NEMO)
Centre for Geospatial Studies, University of West Indies

Legend

- | | | | |
|--------------|------------------|--------------------------|-------------------|
| Roads | | Road Works Status | |
| | Highway | | Cleared; Complete |
| | surfaced | | No change |
| | track | | Works ongoing |
| | unsurfaced | | Works stopped |
| | footpath | | Settlements |
| | Not Known | | Rivers |
| | Forestry Reserve | | Coastline |
| | Roseau Reservoir | | Ministry Zones |

Kilometers
0 0.25 0.5 0.75 1
Scale 1:40,000 at A3 size

Created 12 Nov 2010 / 15:00
Map document MA016-LCA-TransportSectorDamage-MapSeries-A3-v01
Projection / datum Geographic / WGS84
GLIDE Number TC-2010-000216-LCA

The depiction and use of boundaries, names and associated data shown here do not imply endorsement or acceptance by MapAction

Produced by MapAction www.mapaction.org
saintlucia@mapaction.org

MapAction is grateful for the support of DFID

