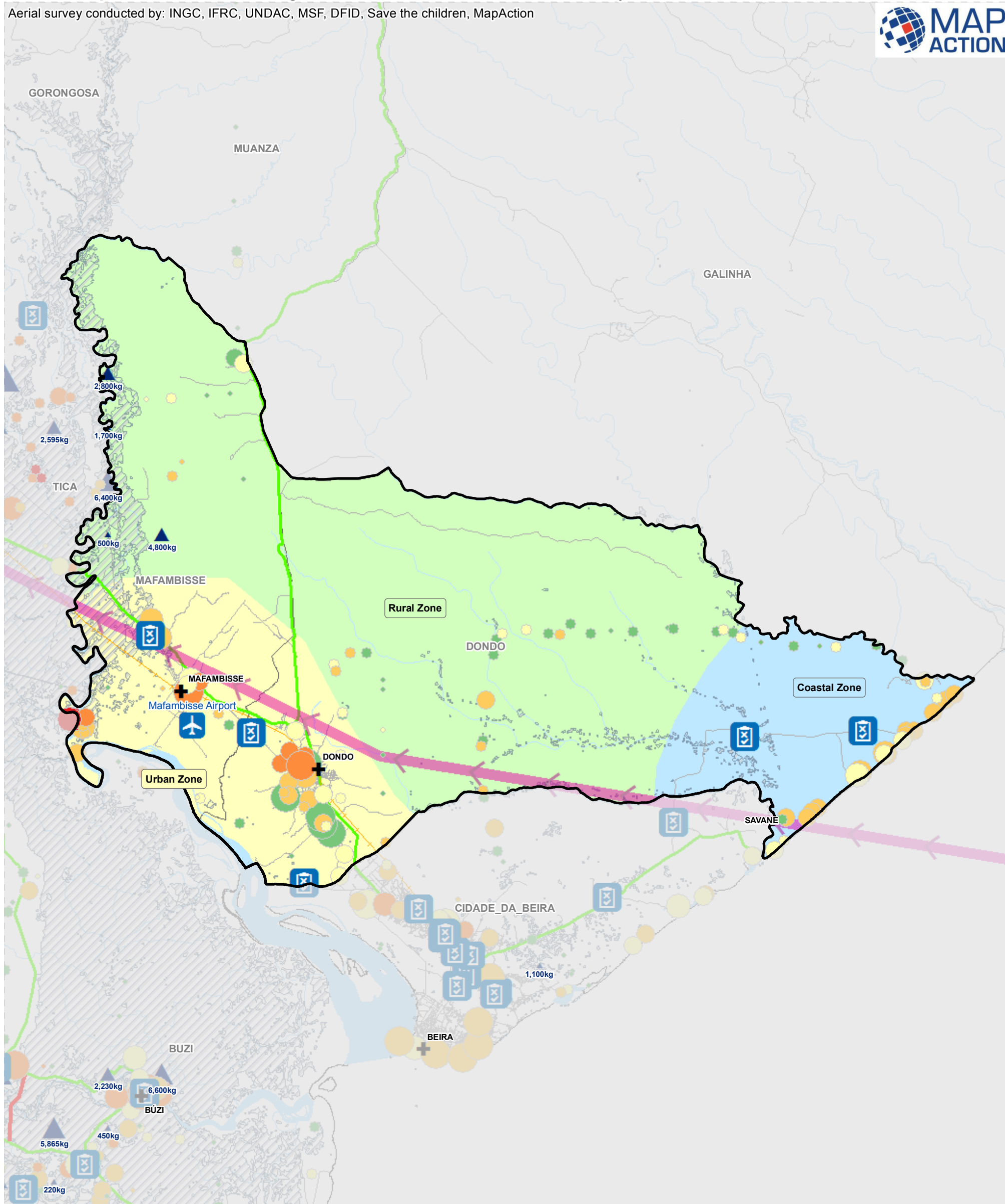


Mozambique: Dondo District - ground and aerial assessment survey locations

MA140b v01

Aerial survey conducted by: INGC, IFRC, UNDAC, MSF, DFID, Save the children, MapAction



	Assessment Location		Airports
	Storm track		Road Status (8th April)
	Waterbodies		Closed
	Rivers		Restricted
	Flood Extent: 19.03.2019		Open
	Postos		Railway on Rehab
			Unknown Road Status
	Food Drops Weight (kg)		
	150 - 1,700		
	1,701 - 4,800		
	4,801 - 9,000		
	9,013 - 12,950		
	12,951 - 57,600		
			Estimated Population
			Critical
			More than 5,000
			1,001 to 5,000
			101 to 1,000
			Less than 100
			None
			Severity scale
			Critical
			Severe
			Serious
			Of concern
			No / Minor

5 km

Data Sources: OSM, INGC, ACAPS, WFP
Map created by MapAction