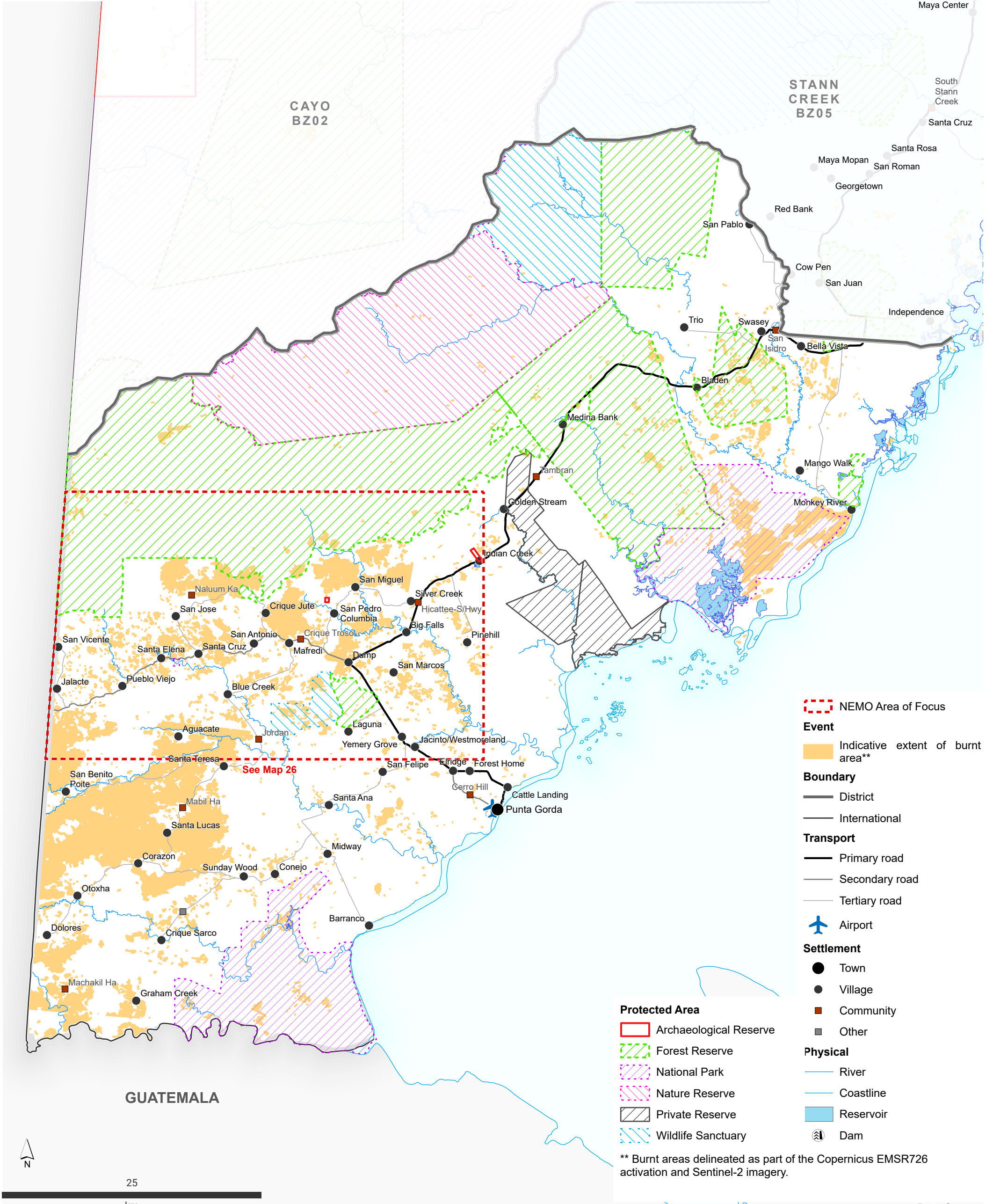


The map shows the INDICATIVE extent of wildfires, derived from Copernicus EMSR726 and Sentinel-2 satellite images. Due to cloud cover on the used satellite images, the map DOES NOT show the full extent of wildfires. The map should only be used as an indicator of where wildfires are likely to have happened. The indicative extent of burnt areas is mosaiced from images from 13 May to 11 June. **Map last updated on 11/06/2024.**



- NEMO Area of Focus
- Event**
- Indicative extent of burnt area**
- Boundary**
- District
- International
- Transport**
- Primary road
- Secondary road
- Tertiary road
- ✈ Airport
- Settlement**
- Town
- Village
- Community
- Other
- Physical**
- River
- Coastline
- Reservoir
- Dam

- Protected Area**
- Archaeological Reserve
- Forest Reserve
- National Park
- Nature Reserve
- Private Reserve
- Wildlife Sanctuary

** Burnt areas delineated as part of the Copernicus EMSR726 activation and Sentinel-2 imagery.

Data Source
 Burnt areas: Copernicus Emergency Management Service, Sentinel-2 imagery.
 Protected areas: Ministry of Natural Resources. Settlements: Statistical Institute of Belize. Other data: NEMO, OpenStreetMap,

The depiction and use of boundaries, names and associated data shown here do not imply endorsement or acceptance by MapAction.

Supported by German Federal Foreign Office
 Map created by MapAction