



MapAction

Sierra Leone Ebola Outbreak: MoH VHF Case Totals by Chiefdom and Section (in WA) Weeks 14 to 45

Map shows the total cases from the MoH VHF database from weeks 14 (31/3) to 45 (06/11). Within Western Area this is at Section level, and outside Western Area at Chiefdom level. See note about VHF data at bottom-right of map

Ebola care facilities

Status, Type

- Open, CCC
- Open, EHC
- Open, ETU
- Planned, CCC
- Planned, ETU
- Planned, EHC

Cases weeks 14 to 45

- 1 to 10
- 11 to 50
- 51 to 100
- 101 to 200
- More than 200

Roads

- Primary
- Secondary

Borders

- National
- Province
- District

0 10 20 30 40 50

km

1: 1,400,000 (at A3)

Data sources

OpenStreetMap, OCHA COD-FOD Registry, Ministry of Health, WHO

Created 17 Nov 2014 / 10:00 UTC±00:00

Map Document MA027_CaseData_Chiefdom_VHF_A3_v2

Projection / Datum WGS 1984 UTM Zone 29N

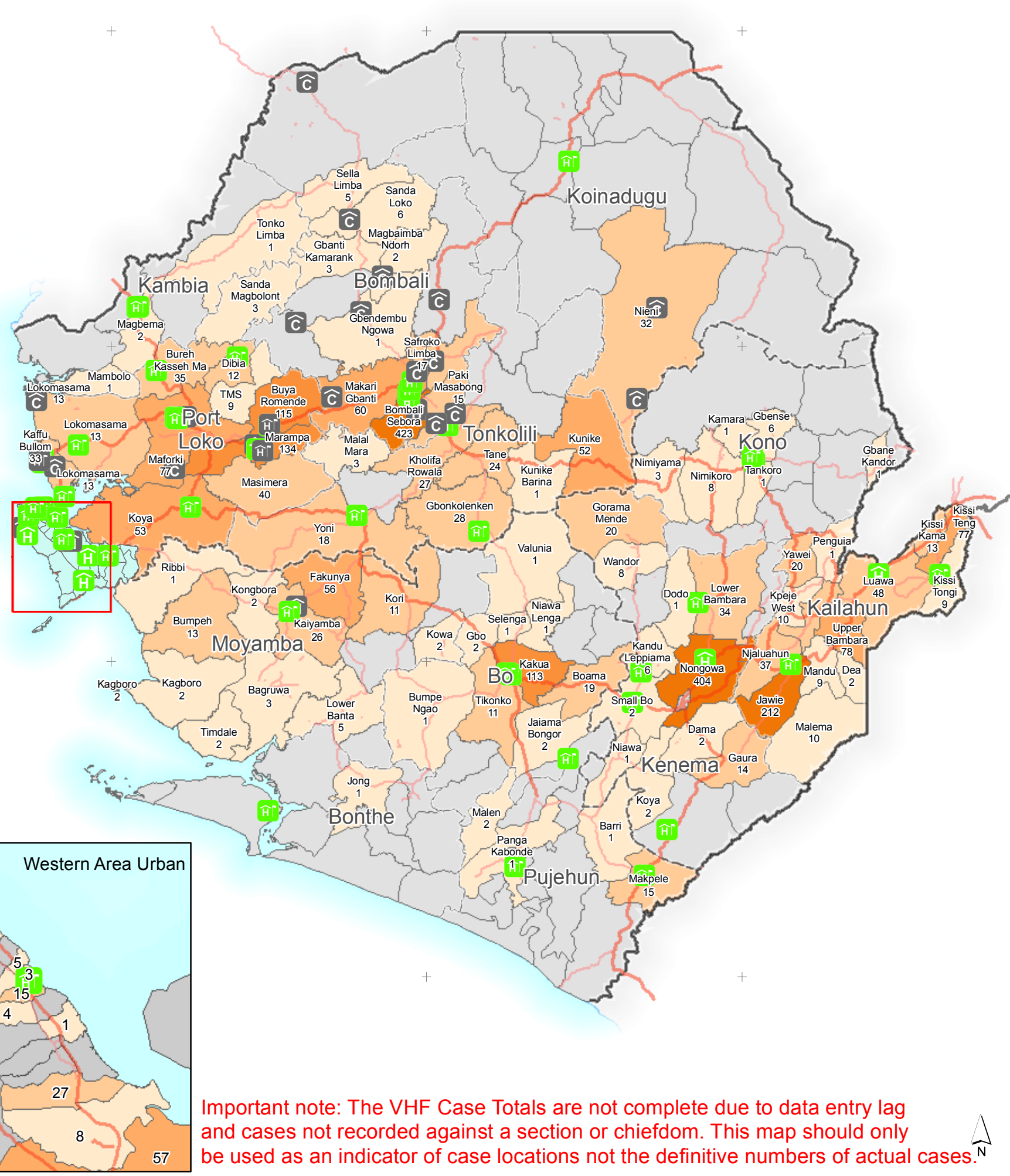
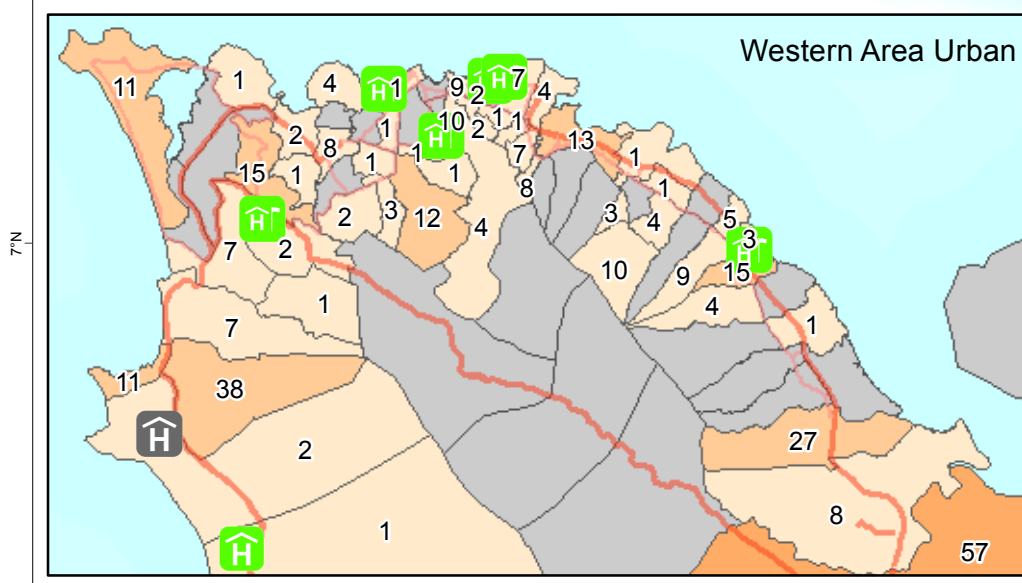
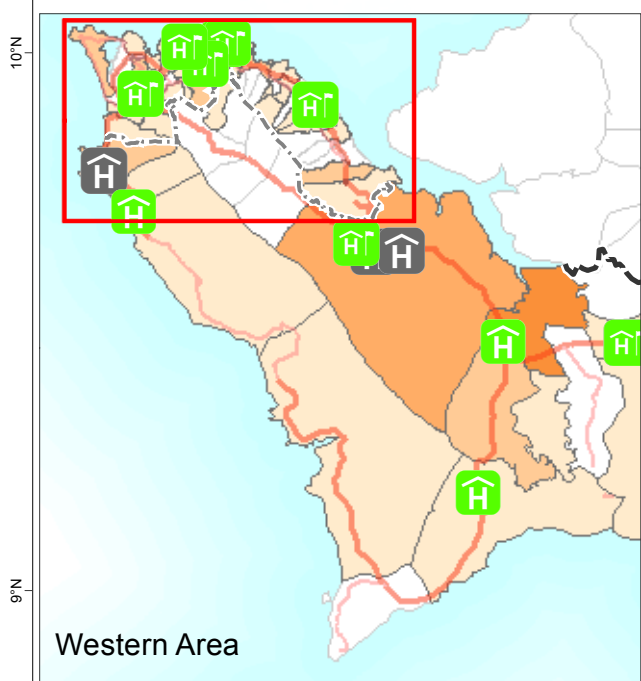
Glide Number EP-2014-000039-SLE

Produced by MapAction
www.mapaction.org
sierraleone@mapaction.org

Supported by



The depiction and use of boundaries, names and associated data shown here do not imply endorsement or acceptance by MapAction.



Important note: The VHF Case Totals are not complete due to data entry lag and cases not recorded against a section or chiefdom. This map should only be used as an indicator of case locations not the definitive numbers of actual cases.