

Reference map showing main settlements, transport links, elevation, water features and administrative boundaries

Settlement	Physical
★ National capital	Glacier
● City	Lake
● Town	Reservoir
Boundary	Wetland
— International	River
- - - Disputed boundary	Elevation (m)
— Province	7600
Transport	-6
⚓ Seaport	
✈ Airport	
— Primary road	
— Secondary road	
— Railway	

40
Km

Data Sources

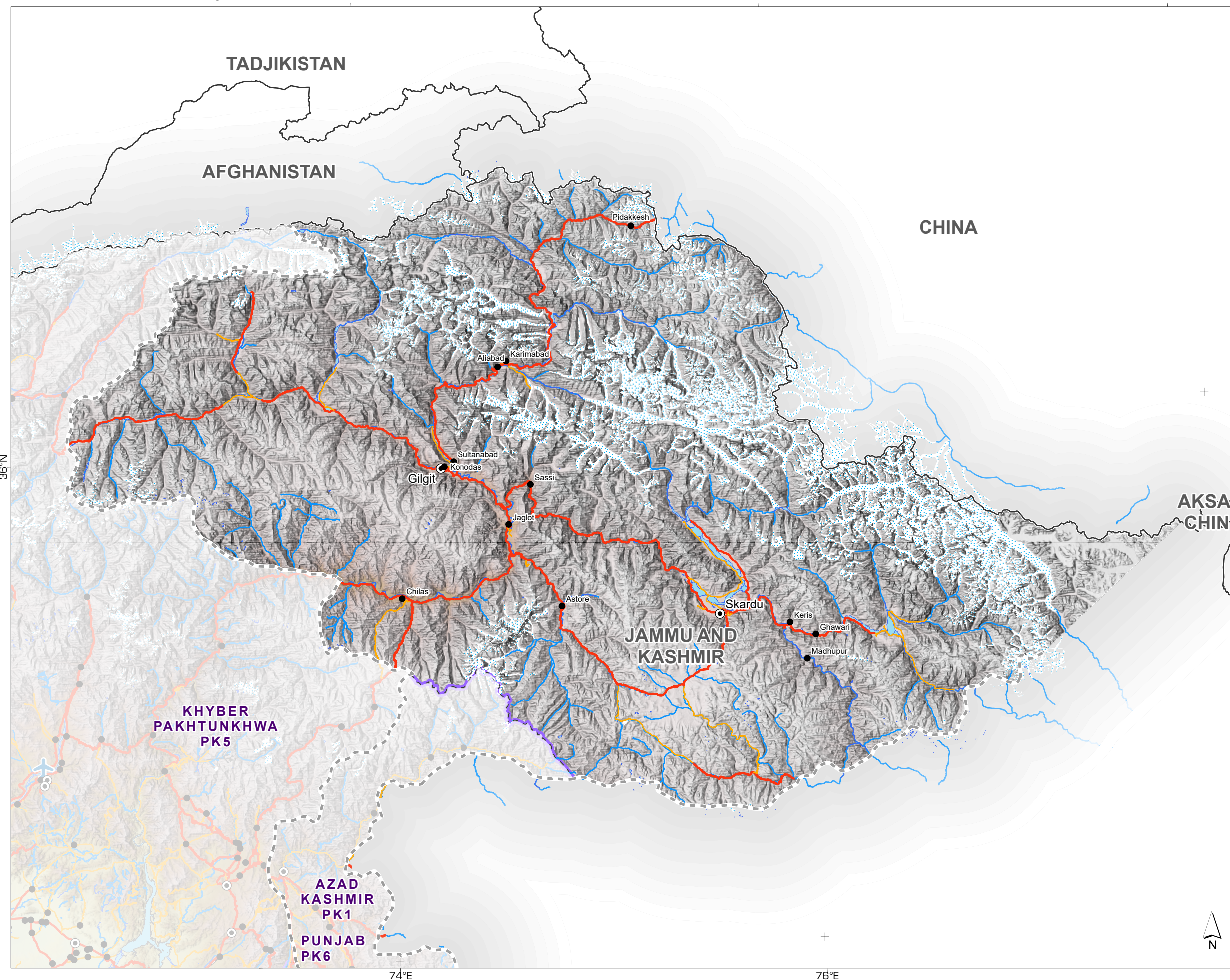
OpenStreetMap, Our Airports, World Port Index, GMTED, WFP, UN, Natural Earth

Created 25 May 2023 / 22:00
UTC+05:00

Projection & Datum WGS_1984_UTM_Zone_42N /
WGS 1984

Produced by MapAction
<https://mapaction.org>
info@mapaction.org

The boundaries and names shown and the designations used on this map do not imply official endorsement or acceptance by the United Nations or MapAction.



Dotted line represents approximately the Line of Control in Jammu and Kashmir agreed upon by India and Pakistan. The final status of Jammu and Kashmir has not yet been agreed upon by the parties.