

### Ebola Care Facilities

- Community Care Centre / Open
- Community Care Centre / Planned
- Ebola Holding Unit / Open
- Ebola Holding Unit / Planned
- Ebola Treatment Centre / Open
- Ebola Treatment Centre / Planned

### VHF confirmed cases

As at 9 Nov 2014

- 1 to 10
- 11 to 50
- 51 to 100
- 101 to 200
- More than 200

Data : MoHS. Case Management.Pillar

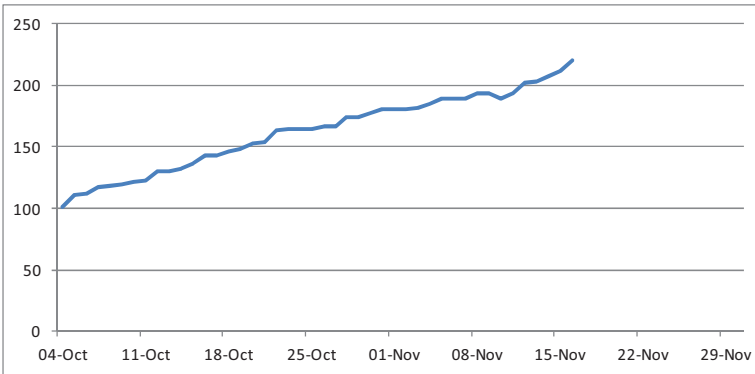
This dashboard represents a snapshot in time in a rapidly changing situation. Figures must be used with caution. Case numbers in map are only indicative, as VHF database is not complete owing to data entry lag and missing location data.

For errors and updates reporting contact NERC Situation Room.

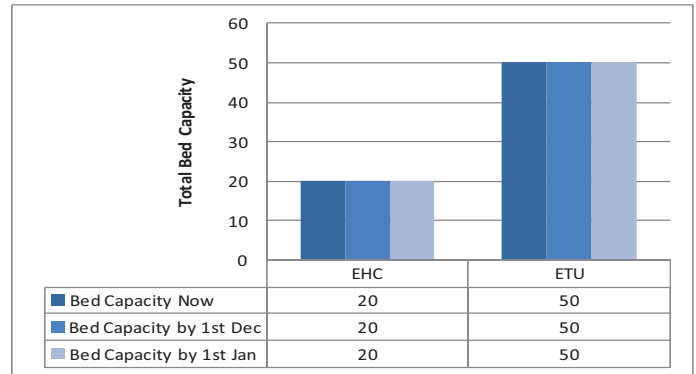


Original design by MapAction

### Cumulative confirmed EVD cases (Ministry of Health)

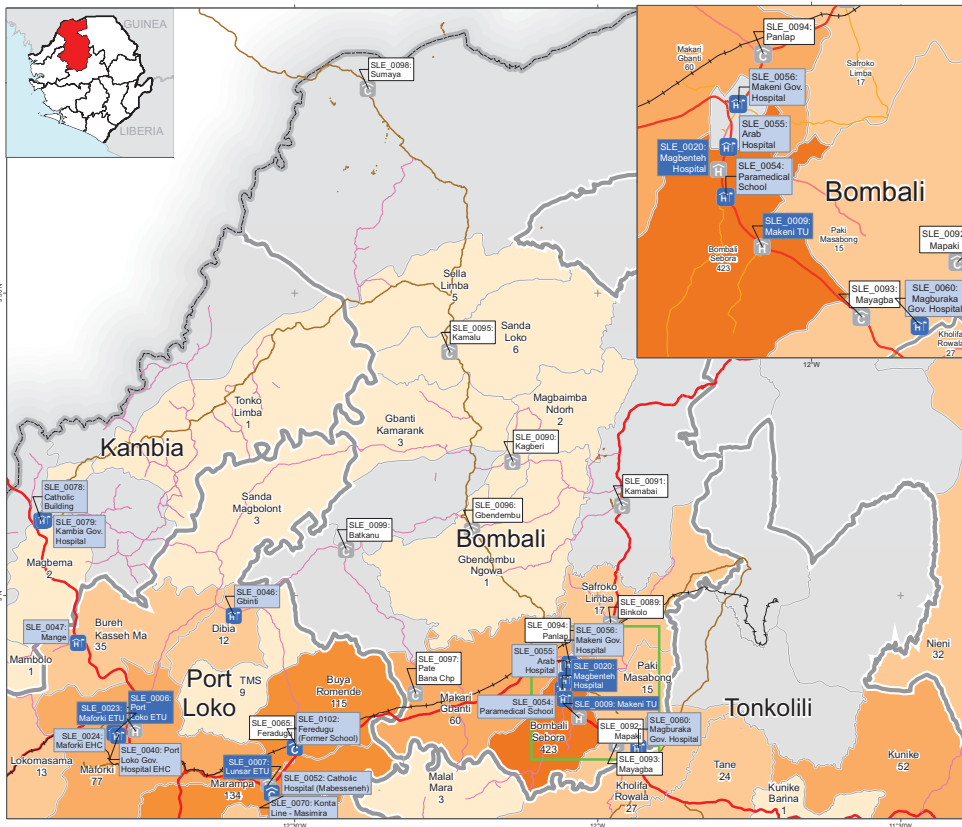


### Bed capacities (Case Management Pillar)



### Ebola Care Facility details (Case Management Pillar)

NERC ECF ID	Facility Name	Type	Ebola Care Status	Lead Donor	Partner	Current Bed Capacity	Full Operational Capacity	Planned Operational Date	Lab Capability
SLE_0015	Bo Town SLRA	ETU	Open	0	MSF	50	50		Yes
SLE_0053	Bo Gov. Hospital	EHC	Open	GOSL	MoH	20	20		No



### Ebola Care Facilities

- Community Care Centre / Open
- Community Care Centre / Planned
- Ebola Holding Unit / Open
- Ebola Holding Unit / Planned
- Ebola Treatment Centre / Open
- Ebola Treatment Centre / Planned

### VHF confirmed cases

As at 9 Nov 2014

- 1 to 10
- 11 to 50
- 51 to 100
- 101 to 200
- More than 200

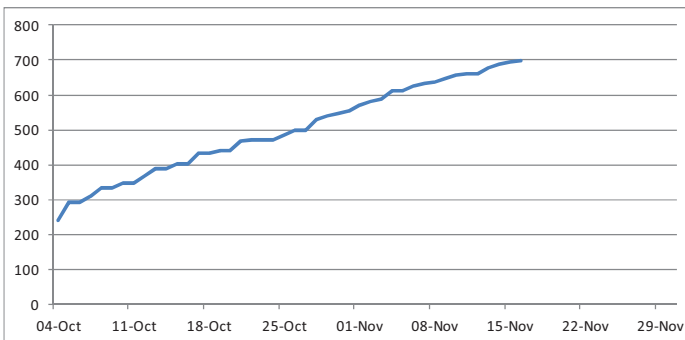
Data : MoHS. Case Management.Pillar

This dashboard represents a snapshot in time in a rapidly changing situation. Figures must be used with caution. Case numbers in map are only indicative, as VHF database is not complete owing to data entry lag and missing location data.

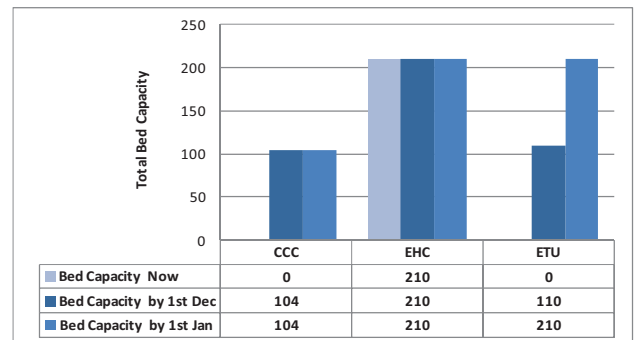
For errors and updates reporting contact NERC Situation Room.

Original design by MapAction

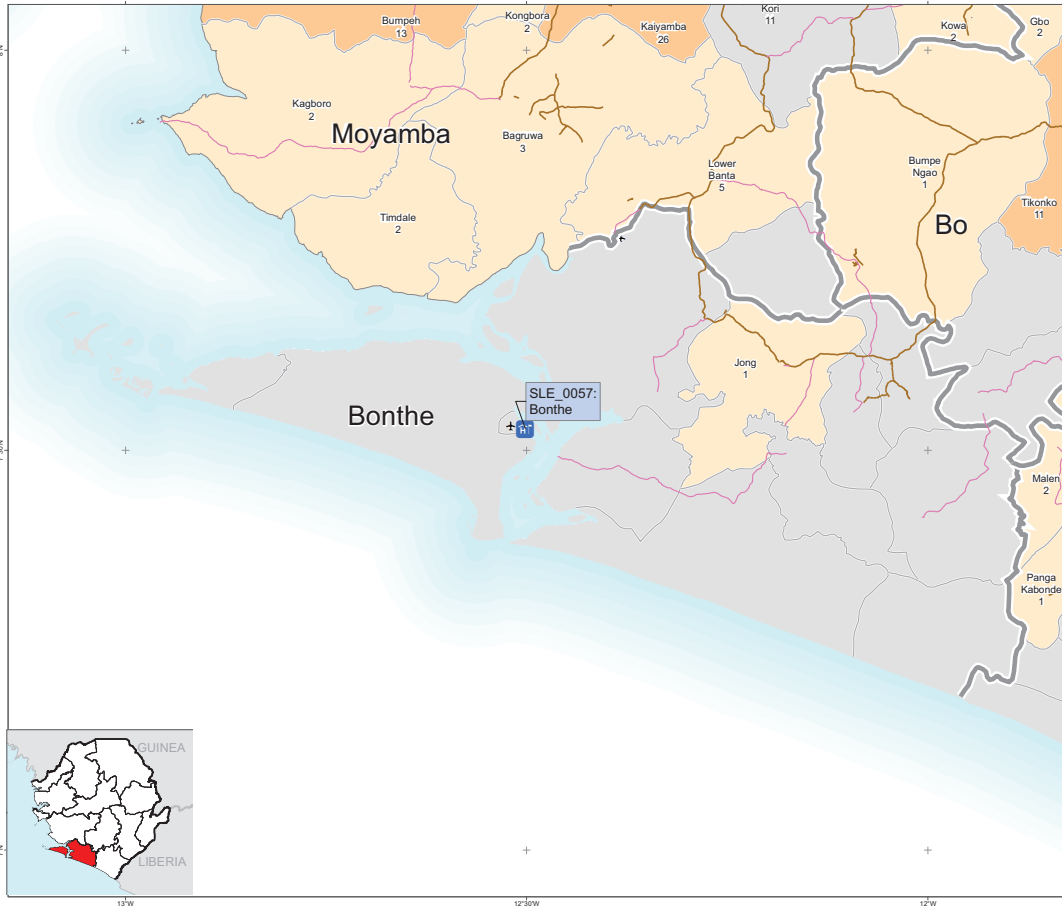
### Cumulative confirmed EVD cases (Ministry of Health)



### Bed capacities (Case Management Pillar)



NERC ECF ID	Facility Name	Type	Ebola Care Status	Lead Donor	Partner	Current Bed Capacity	Full Operational Capacity	Planned Operational Date	Lab Capability
SLE_0009	Makeni TU	ETU	Under Construction	DFID	IOM	0	100	08/12/2014	No
SLE_0020	Magbenteh Hospital	ETU	Under Construction	MoH	MoH/ADAX/AU/WAHO	110	110	30/11/2014	No
SLE_0054	Paramedical School	EHC	Open	GOSL	MoH	60	60		No
SLE_0055	Arab Hospital	EHC	Open	GOSL	MoH	60	60		No
SLE_0056	Makeni Gov. Hospital	EHC	Open	GOSL	MoH	40	40		No
SLE_0060	Magburaka Gov. Hospital	EHC	Open	GOSL	MoH	50	50		No
SLE_0089	Binkolo	CCC	Under Construction	DFID	UNICEF	0	8	15/11/2014	No
SLE_0090	Kagberi	CCC	Under Construction	DFID	UNICEF	0	8	15/11/2014	No
SLE_0091	Kamabai	CCC	Under Construction	DFID	UNICEF	0	8	15/11/2014	No
SLE_0092	Mapaki	CCC	Under Construction	DFID	UNICEF	0	8	15/11/2014	No
SLE_0093	Mayagba	CCC	Under Construction	DFID	UNICEF	0	8	15/11/2014	No
SLE_0094	Panlap	CCC	Under Construction	DFID	UNICEF	0	8	15/11/2014	No
SLE_0095	Kamalu	CCC	Under Construction	DFID	UNICEF	0	8	15/11/2014	No
SLE_0096	Gbendemba	CCC	Under Construction	DFID	UNICEF	0	8	15/11/2014	No
SLE_0097	Pate Bana Chp	CCC	Under Construction	DFID	UNICEF	0	8	15/11/2014	No
SLE_0098	Sumaya	CCC	Under Construction	DFID	UNICEF	0	8	15/11/2014	No
SLE_0099	Batkanu	CCC	Under Construction	DFID	UNICEF	0	8	15/11/2014	No
SLE_0100	Rogbure	CCC	Under Construction	DFID	UNICEF	0	8	15/11/2014	No
SLE_0101	Masomgbo	CCC	Under Construction	DFID	UNICEF	0	8	15/11/2014	No



### Ebola Care Facilities

- Community Care Centre / Open
- Community Care Centre / Planned
- Ebola Holding Unit / Open
- Ebola Holding Unit / Planned
- Ebola Treatment Centre / Open
- Ebola Treatment Centre / Planned

### VHF confirmed cases

As at 9 Nov 2014

- 1 to 10
- 11 to 50
- 51 to 100
- 101 to 200
- More than 200

Data : MoHS. Case Management.Pillar

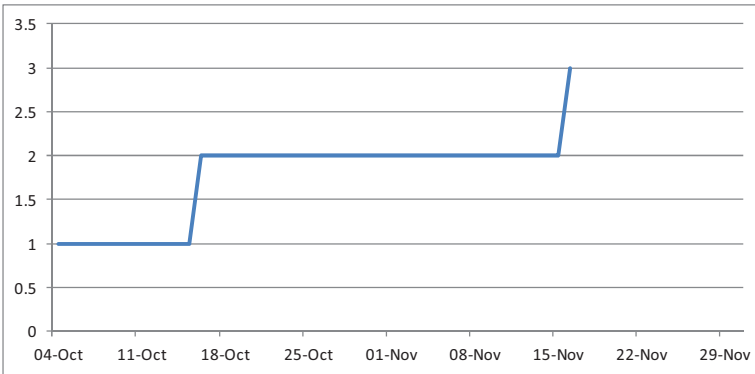
This dashboard represents a snapshot in time in a rapidly changing situation. Figures must be used with caution. Case numbers in map are only indicative, as VHF database is not complete owing to data entry lag and missing location data.

For errors and updates reporting contact NERC Situation Room.

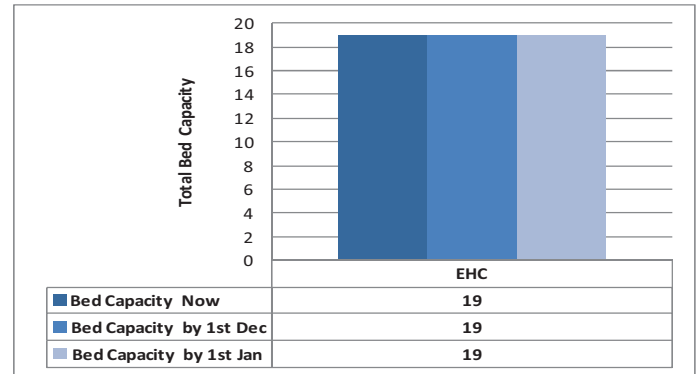


Original design by MapAction

### Cumulative confirmed EVD cases (Ministry of Health)

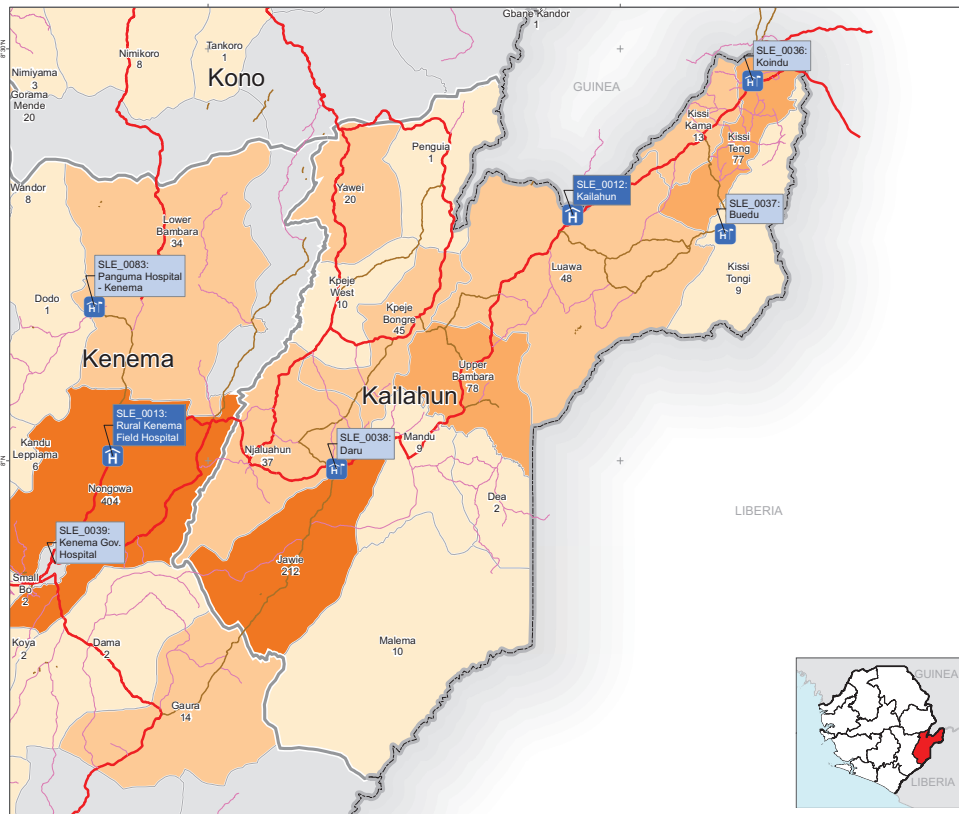


### Bed capacities (Case Management Pillar)



### Ebola Care Facility details (Case Management Pillar)

NERC ECF ID	Facility Name	Type	Ebola Care Status	Lead Donor	Partner	Current Bed Capacity	Full Operational Capacity	Planned Operational Date	Lab Capability
SLE_0057	Bonthe	EHC	Open	GOSL	MoH	19	7		No



### Ebola Care Facilities

- Community Care Centre / Open
- Community Care Centre / Planned
- Ebola Holding Unit / Open
- Ebola Holding Unit / Planned
- Ebola Treatment Centre / Open
- Ebola Treatment Centre / Planned

### VHF confirmed cases

As at 9 Nov 2014

- 1 to 10
- 11 to 50
- 51 to 100
- 101 to 200
- More than 200

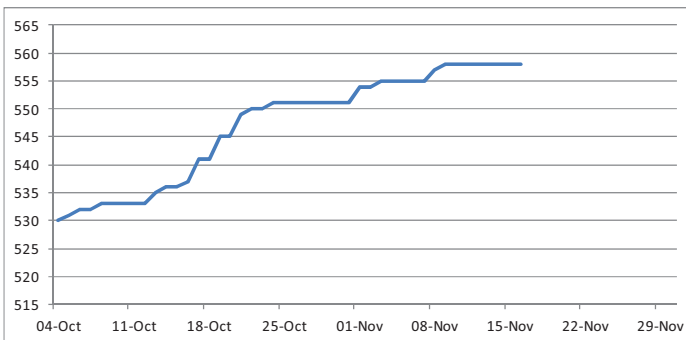
Data : MoHS. Case Management Pillar

This dashboard represents a snapshot in time in a rapidly changing situation. Figures must be used with caution. Case numbers in map are only indicative, as VHF database is not complete owing to data entry lag and missing location data.

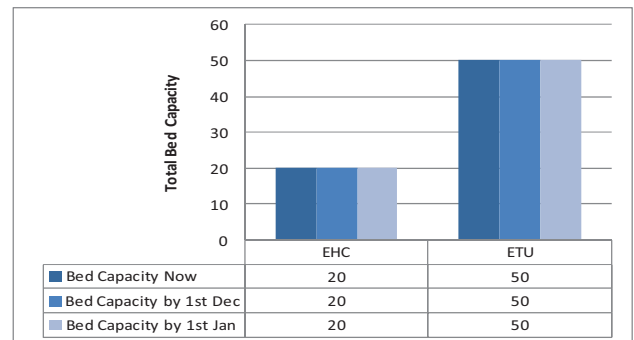
For errors and updates reporting contact NERC Situation Room.

Original design by MapAction

### Cumulative confirmed EVD cases (Ministry of Health)

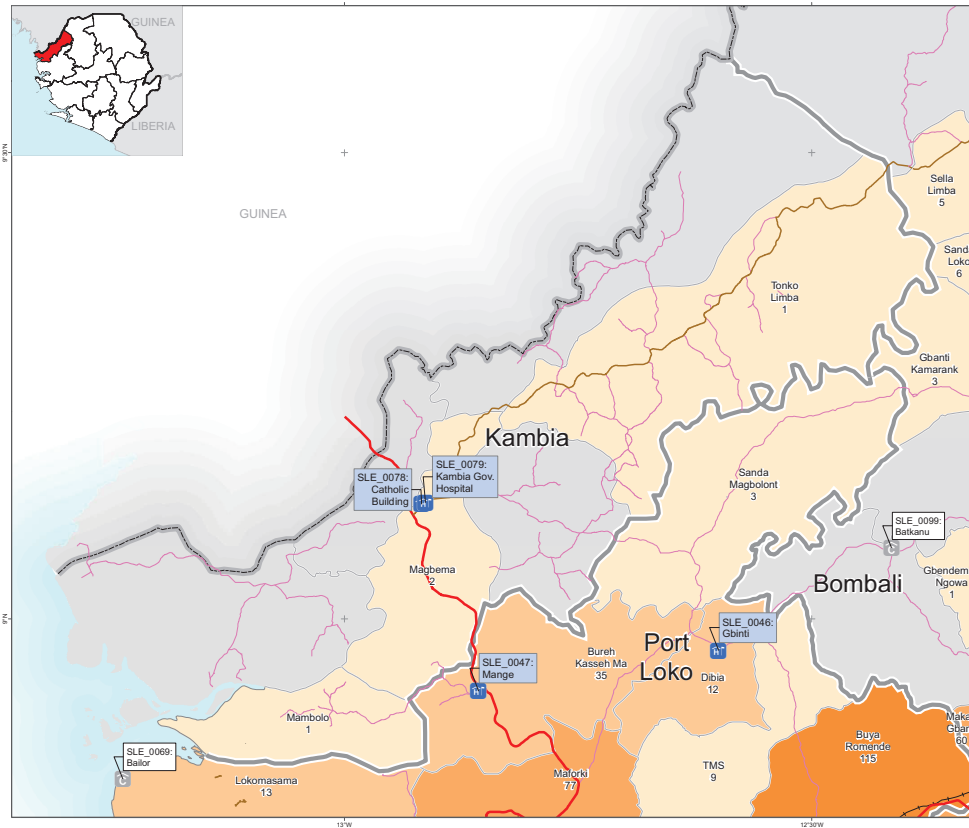


### Bed capacities (Case Management Pillar)



### Ebola Care Facility details (Case Management Pillar)

NERC ECF ID	Facility Name	Type	Ebola Care Status	Lead Donor	Partner	Current Bed Capacity	Full Operational Capacity	Planned Operational Date	Lab Capability
SLE_0012	Kailahun	ETU	Open	MSF		72	72		Yes
SLE_0036	Koindu	EHC	Open	GOSL	MoH	16	16		No
SLE_0037	Buedu	EHC	Open	GOSL	MoH	8	8		No
SLE_0038	Daru	EHC	Open	GOSL	MoH	25	25		No



### Ebola Care Facilities

- Community Care Centre / Open
- Community Care Centre / Planned
- Ebola Holding Unit / Open
- Ebola Holding Unit / Planned
- Ebola Treatment Centre / Open
- Ebola Treatment Centre / Planned

### VHF confirmed cases

As at 9 Nov 2014

- 1 to 10
- 11 to 50
- 51 to 100
- 101 to 200
- More than 200

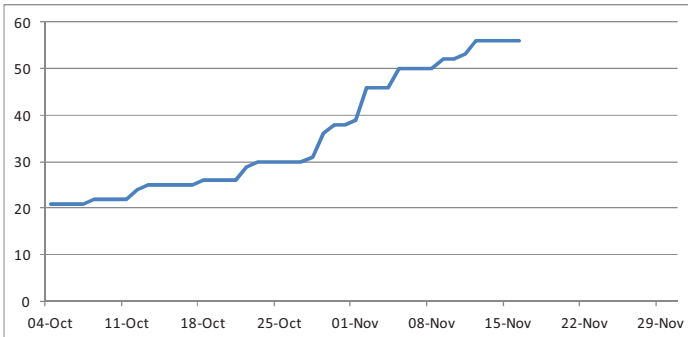
Data : MoHS. Case Management.Pillar

This dashboard represents a snapshot in time in a rapidly changing situation. Figures must be used with caution. Case numbers in map are only indicative, as VHF database is not complete owing to data entry lag and missing location data.

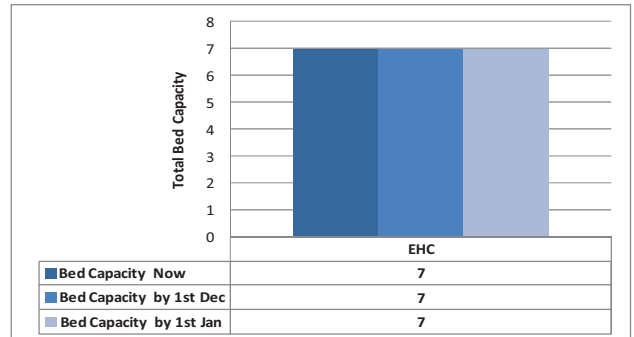
For errors and updates reporting contact NERC Situation Room.

Original design by MapAction

### Cumulative confirmed EVD cases (Ministry of Health)



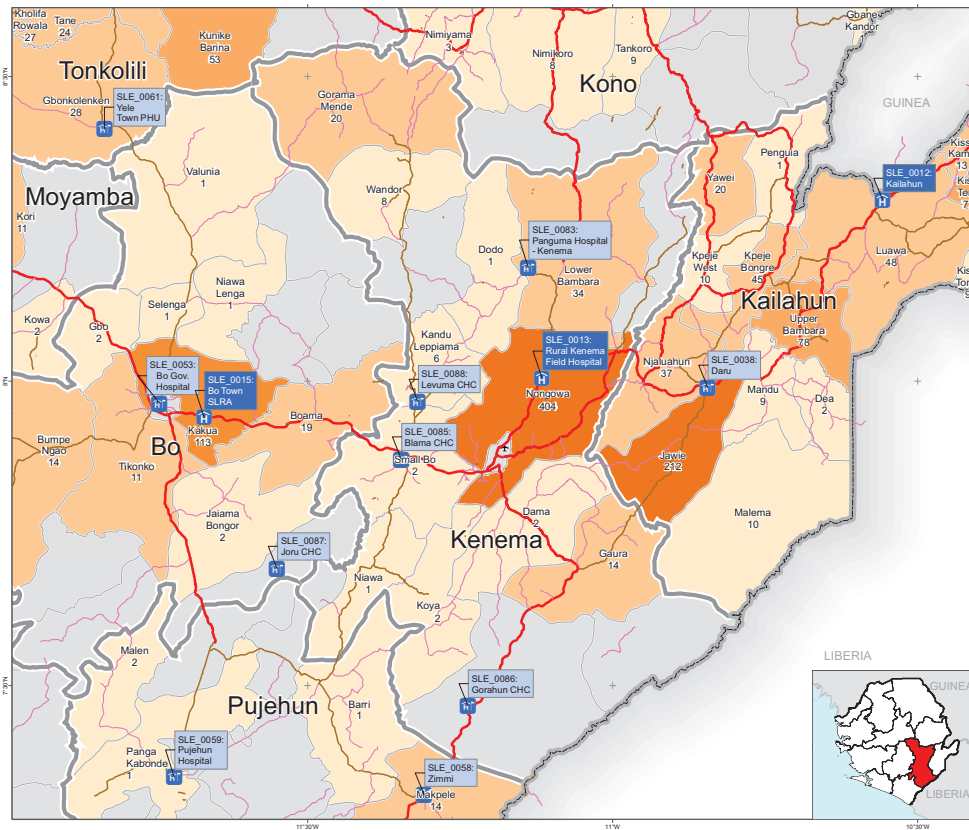
### Bed capacities (Case Management Pillar)



### Ebola Care Facility details (Case Management Pillar)

NERC ECF ID	Facility Name	Type	Ebola Care Status	Lead Donor	Partner	Current Bed Capacity	Full Operational Capacity	Planned Operational Date	Lab Capability
SLE_0078	Catholic Building	EHC	Open	GOSL	MoH	3	3		No
SLE_0079	Kambia Gov. Hospital	EHC	Open	GOSL	MoH	4	4		No





### Ebola Care Facilities

- Community Care Centre / Open
- Community Care Centre / Planned
- Ebola Holding Unit / Open
- Ebola Holding Unit / Planned
- Ebola Treatment Centre / Open
- Ebola Treatment Centre / Planned

### VHF confirmed cases

As at 9 Nov 2014

- 1 to 10
- 11 to 50
- 51 to 100
- 101 to 200
- More than 200

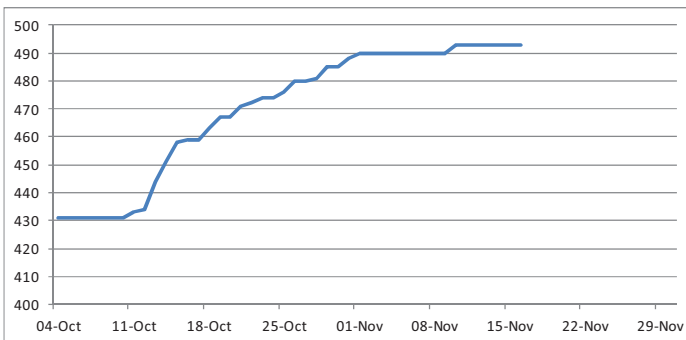
Data : MoHS. Case Management.Pillar

This dashboard represents a snapshot in time in a rapidly changing situation. Figures must be used with caution. Case numbers in map are only indicative, as VHF database is not complete owing to data entry lag and missing location data.

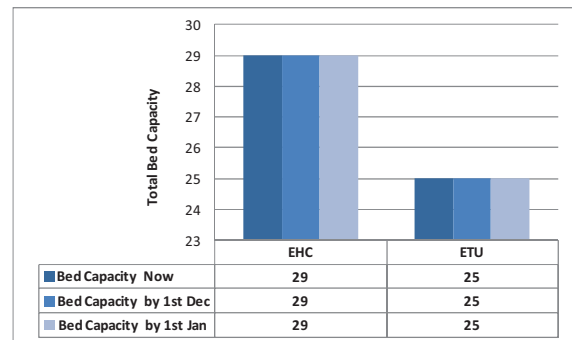
For errors and updates reporting contact NERC Situation Room.

Original design by MapAction

### Cumulative confirmed EVD cases (Ministry of Health)

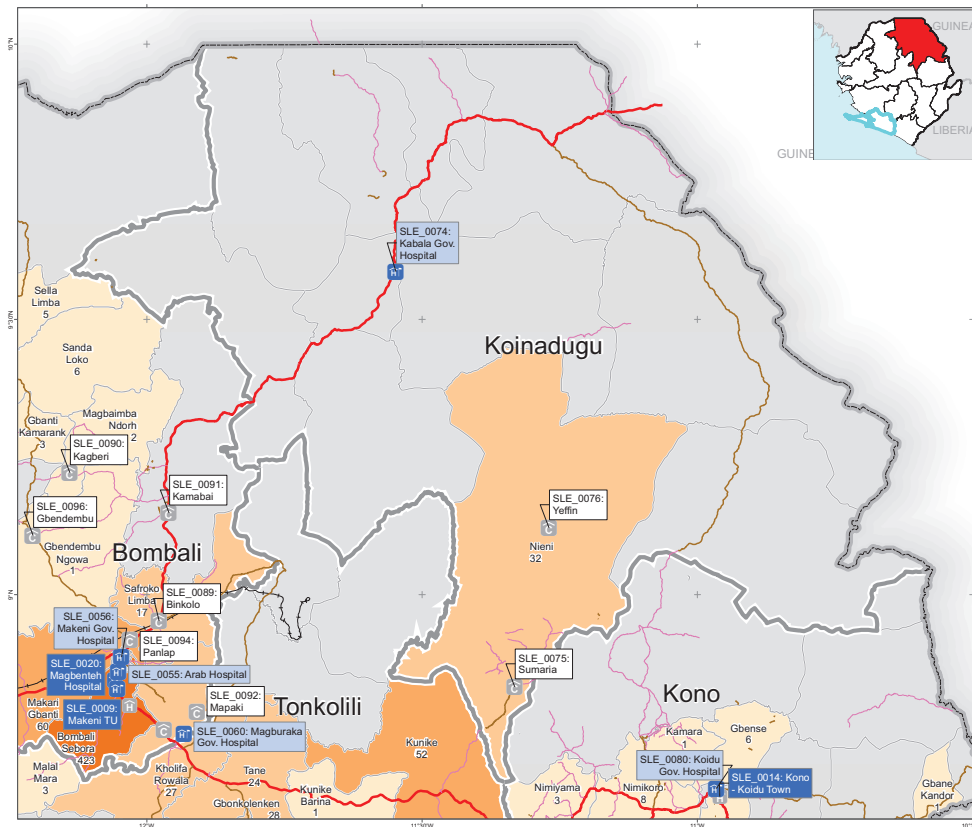


### Bed capacities (Case Management Pillar)



### Ebola Care Facility details (Case Management Pillar)

NERC ECF ID	Facility Name	Type	Ebola Care Status	Lead Donor	Partner	Current Bed Capacity	Full Operational Capacity	Planned Operational Date	Lab Capability
SLE_0013	Rural Kenema Field Hospital	ETU	Open	0	IFRC	25	25		No
SLE_0083	Panguma Hospital - Kenema	EHC	Open	GOSL	MoH	9	9		No
SLE_0084	Baama CHC	EHC	Open	GOSL	MoH	2	2		No
SLE_0085	Blama CHC	EHC	Open	GOSL	MoH	3	3		No
SLE_0086	Gorahun CHC	EHC	Open	GOSL	MoH	5	5		No
SLE_0087	Joru CHC	EHC	Open	GOSL	MoH	5	5		No
SLE_0088	Levuma CHC	EHC	Open	GOSL	MoH	5	5		No








### Ebola Care Facilities

-  Community Care Centre / Open
-  Community Care Centre / Planned
-  Ebola Holding Unit / Open
-  Ebola Holding Unit / Planned
-  Ebola Treatment Centre / Open
-  Ebola Treatment Centre / Planned

### VHF confirmed cases

As at 9 Nov 2014

-  1 to 10
-  11 to 50
-  51 to 100
-  101 to 200
-  More than 200

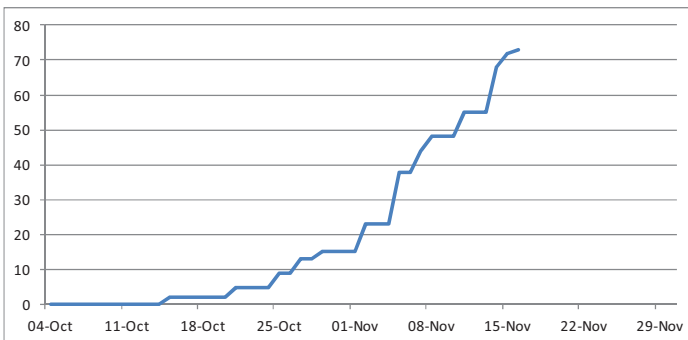
Data : MoHS. Case Management.Pillar

This dashboard represents a snapshot in time in a rapidly changing situation. Figures must be used with caution. Case numbers in map are only indicative, as VHF database is not complete owing to data entry lag and missing location data.

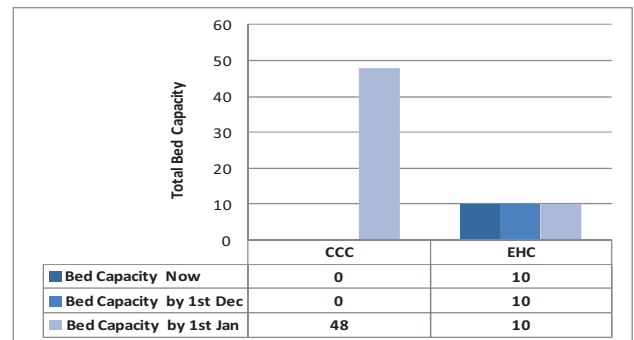
For errors and updates reporting contact NERC Situation Room.

Original design by  MapAction

### Cumulative confirmed EVD cases (Ministry of Health)

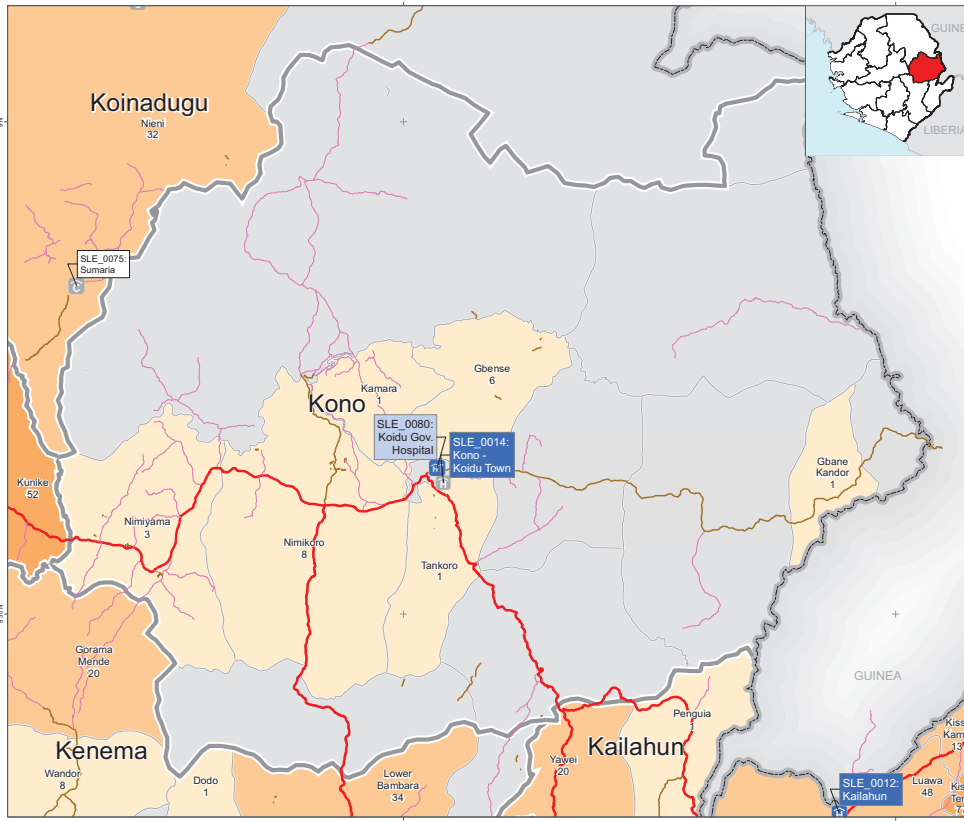


### Bed capacities (Case Management Pillar)



### Ebola Care Facility details (Case Management Pillar)

NERC ECF ID	Facility Name	Type	Ebola Care Status	Lead Donor	Partner	Current Bed Capacity	Full Operational Capacity	Planned Operational Date	Lab Capability
SLE_0074	Kabala Gov. Hospital	EHC	Open	GOSL	MoH	10	10		No
SLE_0075	Sumaria	CCC	Planned	DFID	?	0	16	01/12/2014	No
SLE_0076	Yeffin	CCC	Planned	DFID	?	0	16	01/12/2014	No
SLE_0077	Kumala	CCC	Planned	DFID	?	0	16	01/12/2014	No



### Ebola Care Facilities

- Community Care Centre / Open
- Community Care Centre / Planned
- Ebola Holding Unit / Open
- Ebola Holding Unit / Planned
- Ebola Treatment Centre / Open
- Ebola Treatment Centre / Planned

### VHF confirmed cases

As at 9 Nov 2014

- 1 to 10
- 11 to 50
- 51 to 100
- 101 to 200
- More than 200

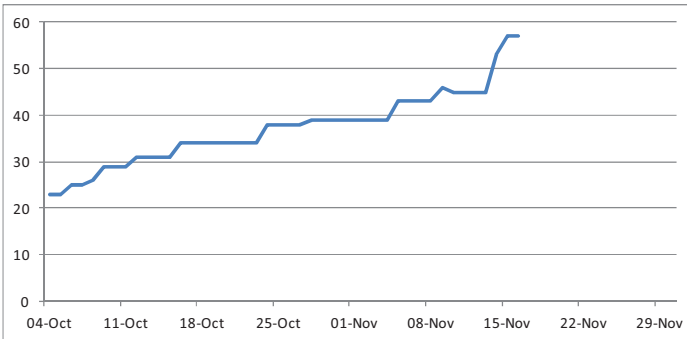
Data : MoHS. Case Management.Pillar

This dashboard represents a snapshot in time in a rapidly changing situation. Figures must be used with caution. Case numbers in map are only indicative, as VHF database is not complete owing to data entry lag and missing location data.

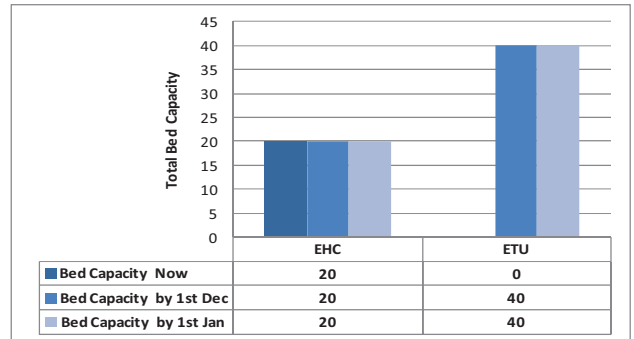
For errors and updates reporting contact NERC Situation Room.

Original design by MapAction

### Cumulative confirmed EVD cases (Ministry of Health)



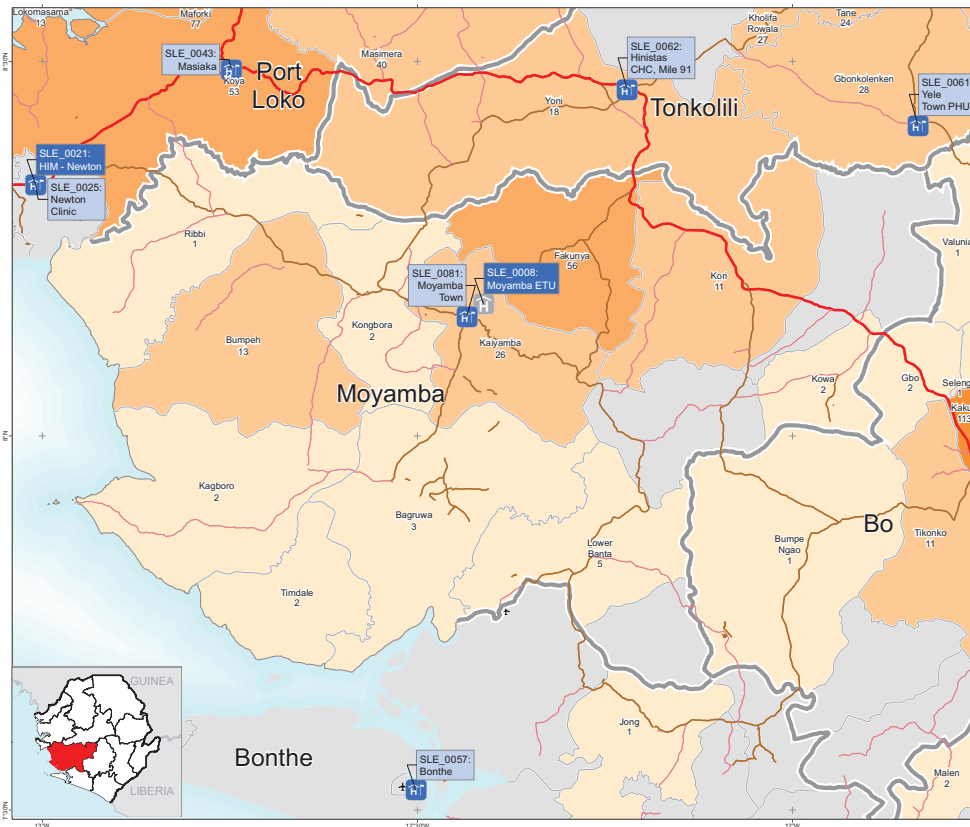
### Bed capacities (Case Management Pillar)



### Ebola Care Facility details (Case Management Pillar)

NERC ECF ID	Facility Name	Type	Ebola Care Status	Lead Donor	Partner	Current Bed Capacity	Full Operational Capacity	Planned Operational Date	Lab Capability
SLE_0014	Kono - Koidu Town	ETU	Planned		0 Well Body/ Partners	0	40	30/11/2014	No
SLE_0080	Koidu Gov. Hospital	EHC	Open	GOSL	MoH / Wellbody	20	20		No





### Ebola Care Facilities

- Community Care Centre / Open
- Community Care Centre / Planned
- Ebola Holding Unit / Open
- Ebola Holding Unit / Planned
- Ebola Treatment Centre / Open
- Ebola Treatment Centre / Planned

### VHF confirmed cases

As at 9 Nov 2014

- 1 to 10
- 11 to 50
- 51 to 100
- 101 to 200
- More than 200

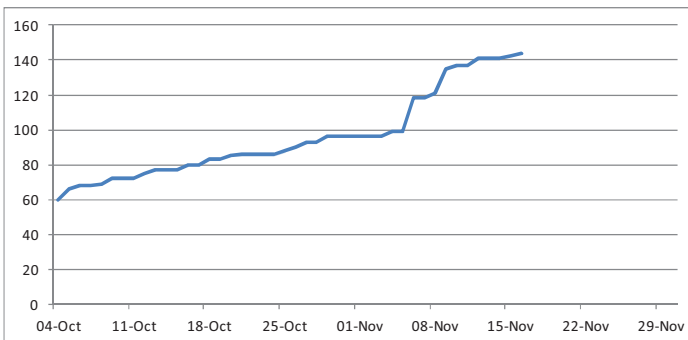
Data : MoHS. Case Management.Pillar

This dashboard represents a snapshot in time in a rapidly changing situation. Figures must be used with caution. Case numbers in map are only indicative, as VHF database is not complete owing to data entry lag and missing location data.

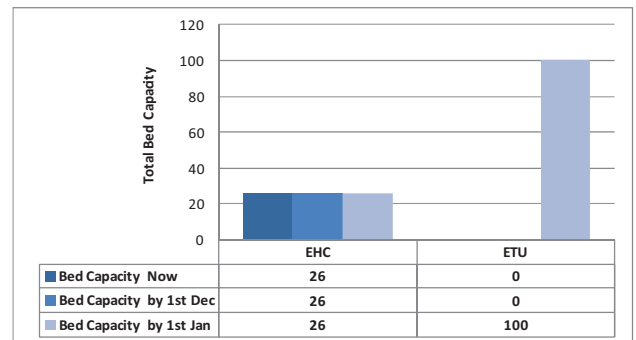
For errors and updates reporting contact NERC Situation Room.

Original design by MapAction

### Cumulative confirmed EVD cases (Ministry of Health)

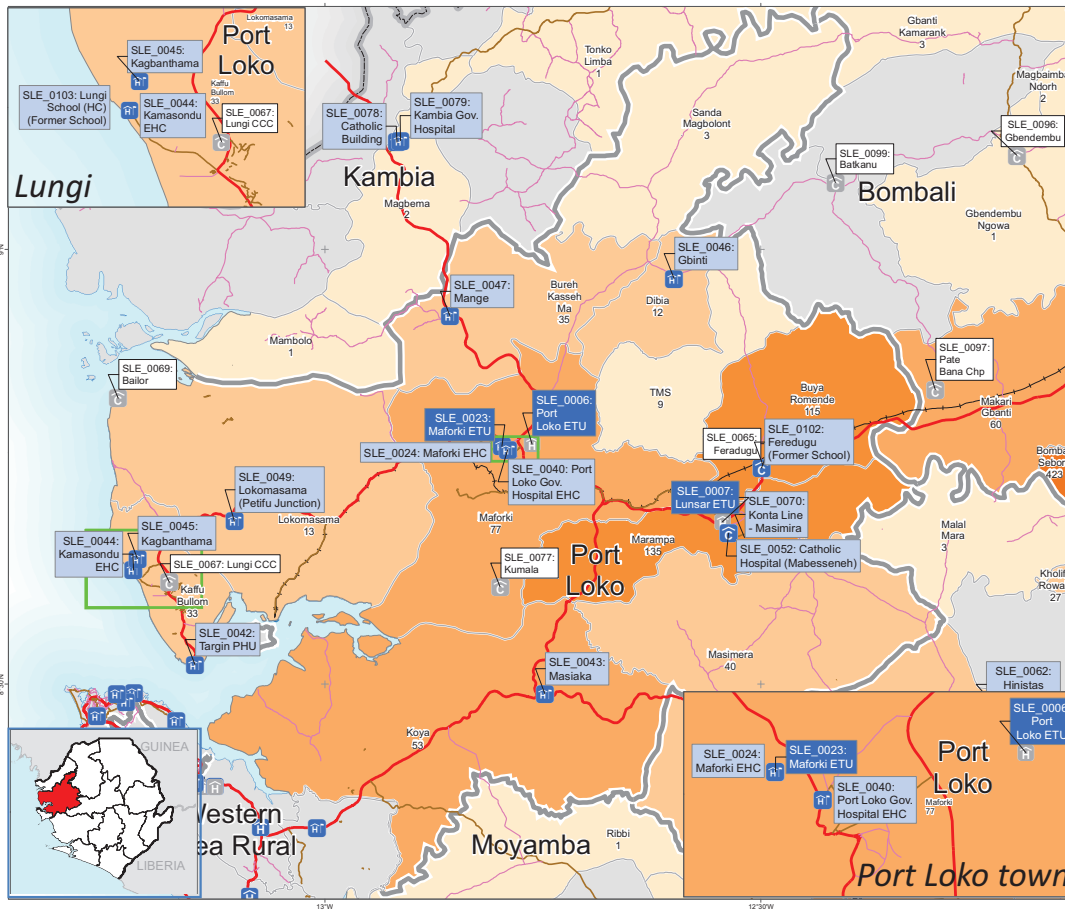


### Bed capacities (Case Management Pillar)



### Ebola Care Facility details (Case Management Pillar)

NERC ECF ID	Facility Name	Type	Ebola Care Status	Lead Donor	Partner	Current Bed Capacity	Full Operational Capacity	Planned Operational Date	Lab Capability
SLE_0008	Moyamba ETU	ETU	Under Construction	DFID	MDM	0	100	15/12/2014	No
SLE_0081	Moyamba Town	EHC	Open	GOSL	MoH	22	22		No
SLE_0082	Tiama	EHC	Open	GOSL	MoH	4	4		No



### Ebola Care Facilities

- Community Care Centre / Open
- Community Care Centre / Planned
- Ebola Holding Unit / Open
- Ebola Holding Unit / Planned
- Ebola Treatment Centre / Open
- Ebola Treatment Centre / Planned

### VHF confirmed cases

As at 9 Nov 2014

- 1 to 10
- 11 to 50
- 51 to 100
- 101 to 200
- More than 200

Data : MoHS. Case Management.Pillar

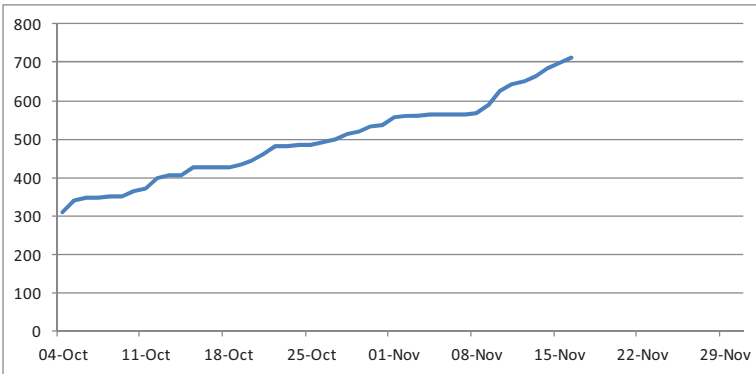
This dashboard represents a snapshot in time in a rapidly changing situation. Figures must be used with caution. Case numbers in map are only indicative, as VHF database is not complete owing to data entry lag and missing location data.

For errors and updates reporting contact NERC Situation Room.

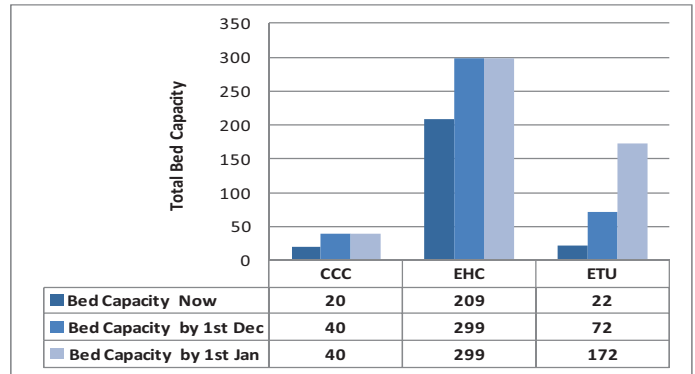


Original design by MapAction

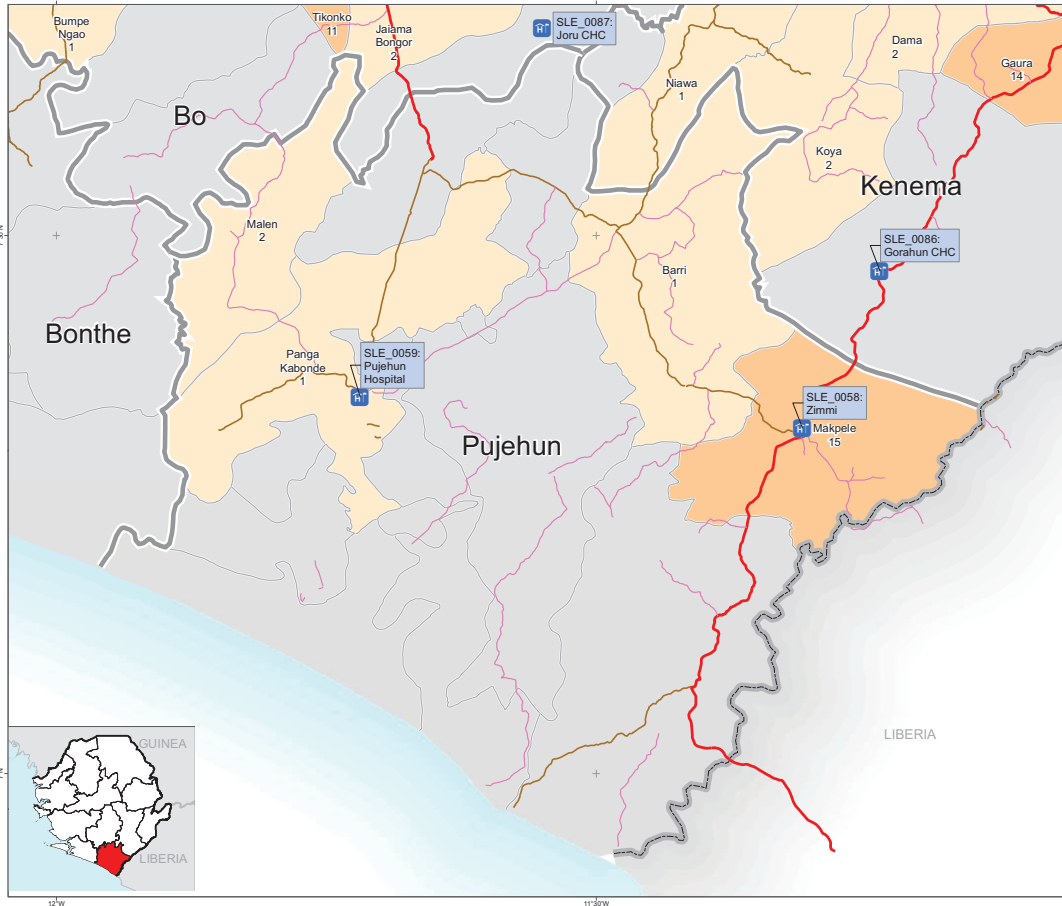
### Cumulative confirmed EVD cases (Ministry of Health)



### Bed capacities (Case Management Pillar)



NERC ECF ID	Facility Name	Type	Ebola Care Status	Lead Donor	Partner	Current Bed Capacity	Full Operational Capacity	Planned Operational Date	Lab Capability
SLE_0006	Port Loko ETU	ETU	Under Construction	DFID	GOAL	0	100	08/12/2014	No
SLE_0007	Lunsar ETU	ETU	Under Construction	DFID/ECHO/OFDA	IMC	0	50	21/11/2014	No
SLE_0023	Maforiki ETU	ETU	Open	GOSL	MoH / Plan	22	40		No
SLE_0024	Maforiki EHC	EHC	Open	GOSL	MoH / Plan	84	84		No
SLE_0040	Port Loko Gov. Hospital EHC	EHC	Open	GOSL	MoH	62	62		No
SLE_0042	Targin PHU	EHC	Open	GOSL	MoH	8	8		No
SLE_0043	Masiaka	EHC	Open	GOSL	MoH	4	4		No
SLE_0044	Kamasondu EHC	EHC	Open	GOSL	MoH	7	7		No
SLE_0045	Kagbanthama	EHC	Open	GOSL	MoH	12	12		No
SLE_0046	Gbinti	EHC	Open	GOSL	MoH	10	10		No
SLE_0047	Mange	EHC	Open	GOSL	MoH	6	6		No
SLE_0049	Lokomasama (Petifu Junction)	EHC	Open	GOSL	MoH/Shepherd Hospices	7	60	18/11/2014	No
SLE_0052	Catholic Hospital (Mabesseneh)	EHC	Open	GOSL	MoH/ Plan	9	9		No
SLE_0064	Lunsar	CCC	Open	DFID	PIH / Plan	8	8		No
SLE_0065	Feradugu	CCC	Open	DFID	PIH / Plan	12	12	15/11/2014	No
SLE_0067	Lungi CCC	CCC	Under Construction	DFID	MOH / Plan	10	10	21/11/2014	No
SLE_0069	Bailor	CCC	Under Construction	DFID	PIH	0	10	30/11/2014	No
SLE_0070	Konta Line - Masimira	EHC	Under Construction	DFID	IRC / Oxfam	0	20	30/11/2014	No
SLE_0102	Feradugu (Former School)	EHC	Under Construction		0 MOH	0	40	19/11/2014	No
SLE_0103	Lungi School (HC) (Former School)	EHC	Under Construction		0 Partners in Health	0	30	21/11/2014	No



### Ebola Care Facilities

- Community Care Centre / Open
- Community Care Centre / Planned
- Ebola Holding Unit / Open
- Ebola Holding Unit / Planned
- Ebola Treatment Centre / Open
- Ebola Treatment Centre / Planned

### VHF confirmed cases

As at 9 Nov 2014

- 1 to 10
- 11 to 50
- 51 to 100
- 101 to 200
- More than 200

Data : MoHS. Case Management.Pillar

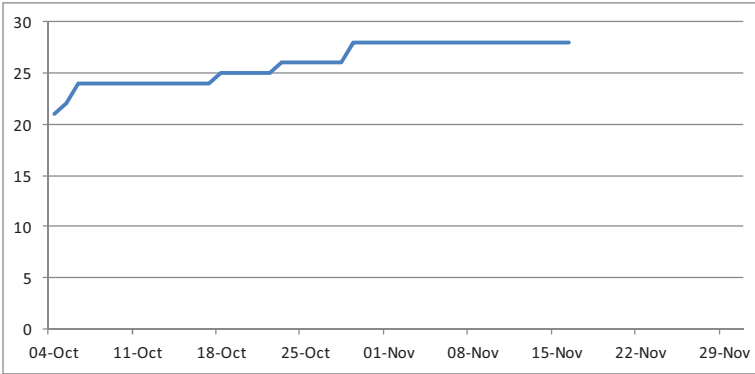
This dashboard represents a snapshot in time in a rapidly changing situation. Figures must be used with caution. Case numbers in map are only indicative, as VHF database is not complete owing to data entry lag and missing location data.

For errors and updates reporting contact NERC Situation Room.

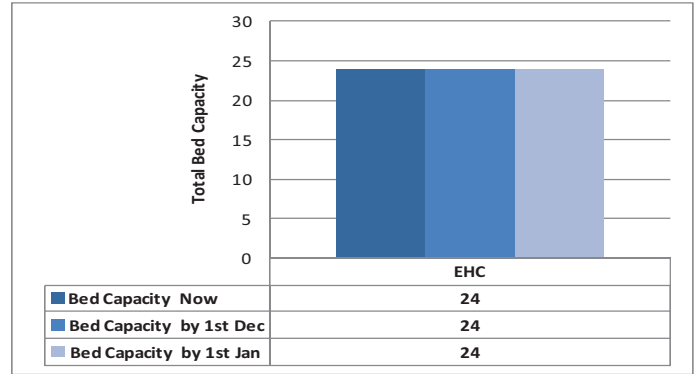


Original design by MapAction

### Cumulative confirmed EVD cases (Ministry of Health)

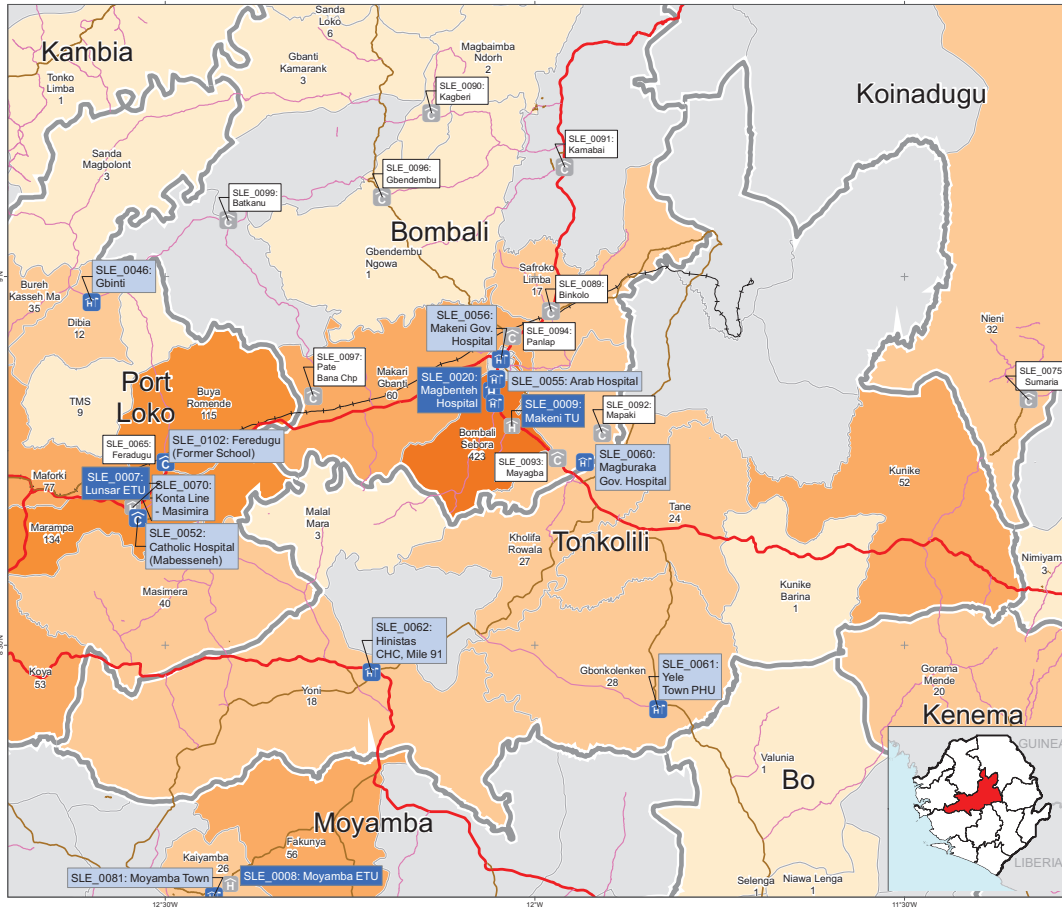


### Bed capacities (Case Management Pillar)



### Ebola Care Facility details (Case Management Pillar)

NERC ECF ID	Facility Name	Type	Ebola Care Status	Lead Donor	Partner	Current Bed Capacity	Full Operational Capacity	Planned Operational Date	Lab Capability
SLE_0058	Zimmi	EHC	Open	GOSL	MoH	12	12		No
SLE_0059	Pujehun Hospital	EHC	Open	GOSL	MoH	12	12		No



### Ebola Care Facilities

- Community Care Centre / Open
- Community Care Centre / Planned
- Ebola Holding Unit / Open
- Ebola Holding Unit / Planned
- Ebola Treatment Centre / Open
- Ebola Treatment Centre / Planned

### VHF confirmed cases

As at 9 Nov 2014

- 1 to 10
- 11 to 50
- 51 to 100
- 101 to 200
- More than 200

Data : MoHS. Case Management.Pillar

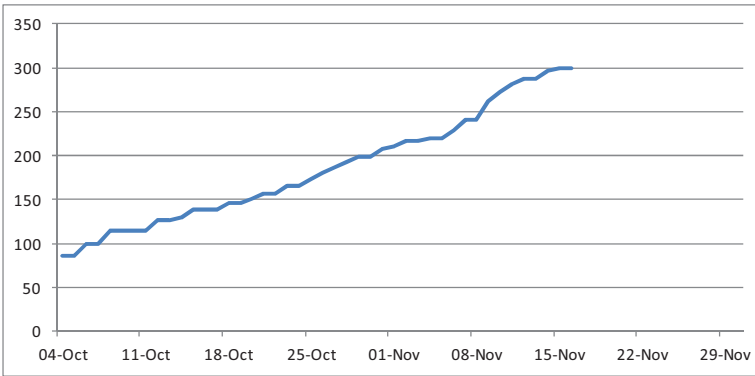
This dashboard represents a snapshot in time in a rapidly changing situation. Figures must be used with caution. Case numbers in map are only indicative, as VHF database is not complete owing to data entry lag and missing location data.

For errors and updates reporting contact NERC Situation Room.

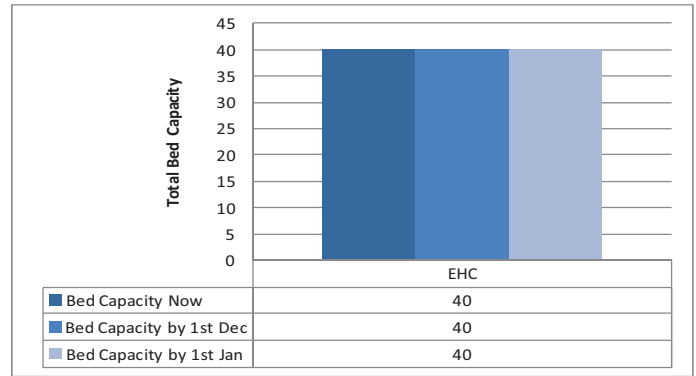


Original design by MapAction

### Cumulative confirmed EVD cases (Ministry of Health)

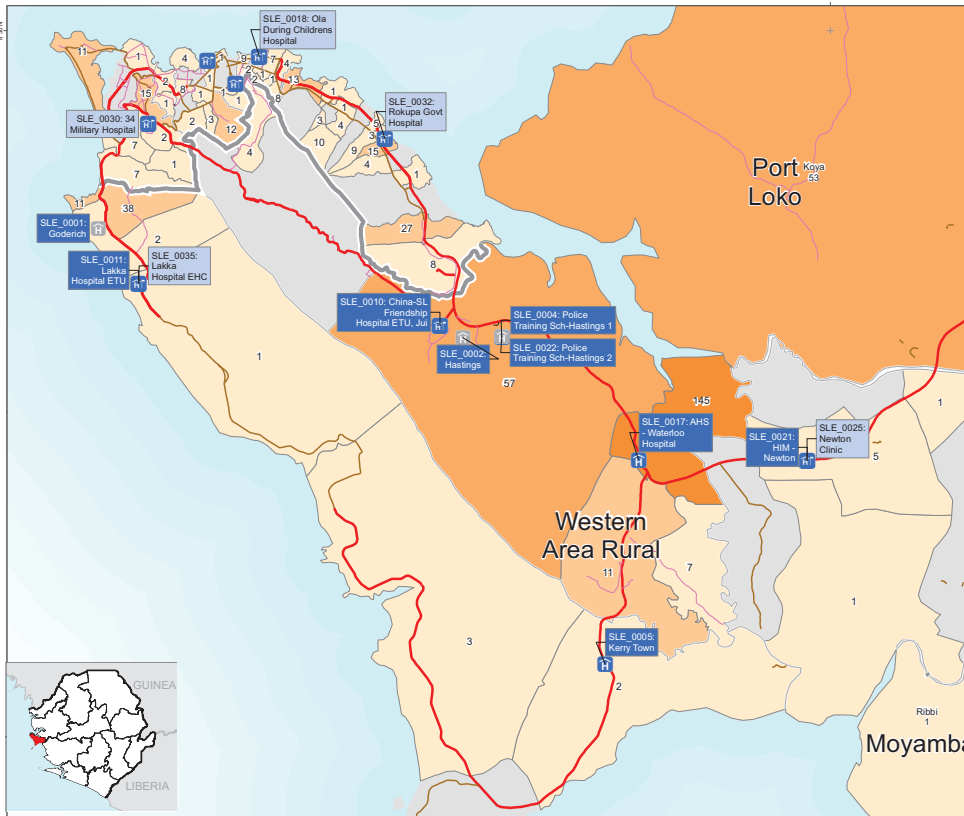


### Bed capacities (Case Management Pillar)



### Ebola Care Facility details (Case Management Pillar)

NERC ECF ID	Facility Name	Type	Ebola Care Status	Lead Donor	Partner	Current Bed Capacity	Full Operational Capacity	Planned Operational Date	Lab Capability
SLE_0061	Yele Town PHU	EHC	Open	GOSL	MoH	20	20		No
SLE_0062	Hinistas CHC, Mile 91	EHC	Open	GOSL	MoH	20	20		No

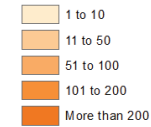


### Ebola Care Facilities

- Community Care Centre / Open
- Community Care Centre / Planned
- Ebola Holding Unit / Open
- Ebola Holding Unit / Planned
- Ebola Treatment Centre / Open
- Ebola Treatment Centre / Planned

### VHF confirmed cases

As at 9 Nov 2014



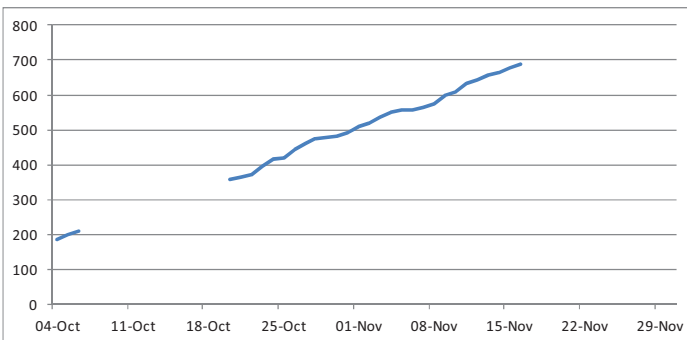
Data : MoHS. Case Management.Pillar

This dashboard represents a snapshot in time in a rapidly changing situation. Figures must be used with caution. Case numbers in map are only indicative, as VHF database is not complete owing to data entry lag and missing location data.

For errors and updates reporting contact NERC Situation Room.

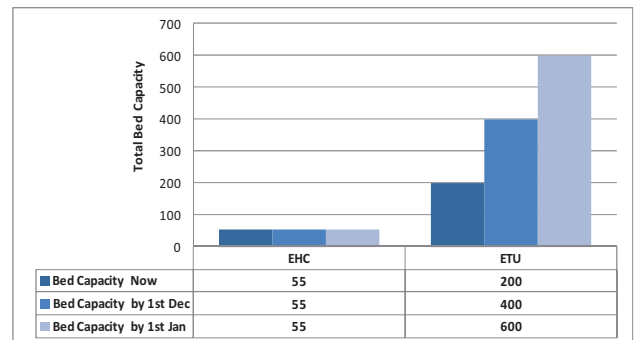
Original design by MapAction

### Cumulative confirmed EVD cases (Ministry of Health)



Gap in data during October as MoHS reported figures only for WA total

### Bed capacities (Case Management Pillar)



### Ebola Care Facility details (Case Management Pillar)

NERC ECF ID	Facility Name	Type	Ebola Care Status	Lead Donor	Partner	Current Bed Capacity	Full Operational Capacity	Planned Operational Date	Lab Capability
SLE_0001	Goderich	ETU	Under Construction	DFID	EMERGENCY	0	100	15/12/2014	No
SLE_0002	Hastings	ETU	Under Construction	DFID	RSLAF/KINGS	0	100	08/12/2014	No
SLE_0004	Police Training Sch-Hastings 1	ETU	Open	GOSL	MOH / RSLAF	120	120		No
SLE_0005	Kerry Town	ETU	Open	DFID	Save the Children	10	100		Yes
SLE_0010	China-SL Friendship Hospital ETU, Jui	ETU	Open	China	Chinese CDC	2	2		Yes
SLE_0011	Lakka Hospital ETU	ETU	Open	Emergency / MOH		6	6		Yes
SLE_0017	AHS - Waterloo Hospital	ETU	Open	GOSL	MOH / MSF	62	62	16/11/2014	No
SLE_0021	HIM - Newton	ETU	Planned	UNMEER	?	0	120	15/01/2015	No
SLE_0022	Police Training Sch-Hastings 2	ETU	Under Construction	GOSL	MOH/RSLAF	0	200	24/11/2014	No
SLE_0025	Newton Clinic	EHC	Open	?	MOH/Kings/RSLAF	12	12		No
SLE_0033	China-SL Friendship Hospital EHC, Jui	EHC	Open	China	MOH/Kings	38	38		No
SLE_0035	Lakka Hospital EHC	EHC	Open	DFID	Emergency	5	5		No





### Ebola Care Facilities

- Community Care Centre / Open
- Community Care Centre / Planned
- Ebola Holding Unit / Open
- Ebola Holding Unit / Planned
- Ebola Treatment Centre / Open
- Ebola Treatment Centre / Planned

### VHF confirmed cases

As at 9 Nov 2014

- 1 to 10
- 11 to 50
- 51 to 100
- 101 to 200
- More than 200

Data : MoHS. Case Management.Pillar

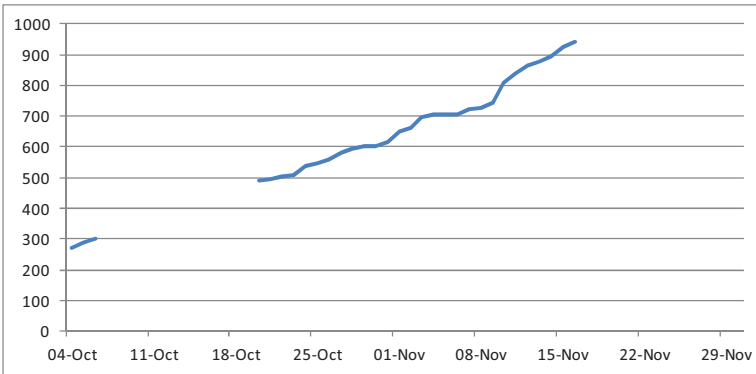
This dashboard represents a snapshot in time in a rapidly changing situation. Figures must be used with caution. Case numbers in map are only indicative, as VHF database is not complete owing to data entry lag and missing location data.

For errors and updates reporting contact NERC Situation Room.



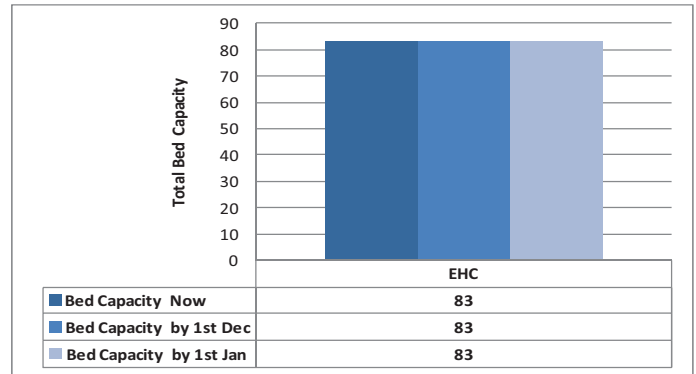
Original design by MapAction

### Cumulative confirmed EVD cases (Ministry of Health)



Gap in data during October as MoHS reported figures only for WA total

### Bed capacities (Case Management Pillar)



### Ebola Care Facility details (Case Management Pillar)

NERC ECF ID	Facility Name	Type	Ebola Care Status	Lead Donor	Partner	Current Bed Capacity	Full Operational Capacity	Planned Operational Date	Lab Capability
SLE_0018	Ola During Childrens Hospital	EHC	Open	0	MOH/Cap Anamur	20	20		No
SLE_0027	Macauley St Hospital	EHC	Open	GOSL	MOH/Kings	7	7		No
SLE_0030	34 Military Hospital	EHC	Open	GOSL	RSLAF	16	16		No
SLE_0032	Rokupa Govt Hospital	EHC	Open	GOSL	MOH/Kings	22	22		No
SLE_0034	Connaught Hospital	EHC	Open	GOSL	Kings	18	18		No