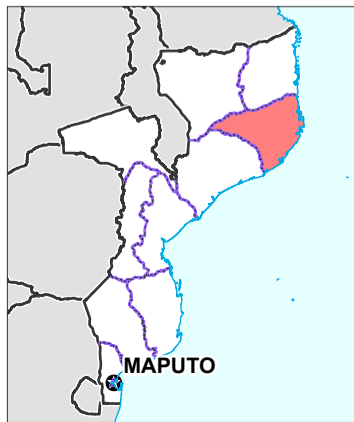
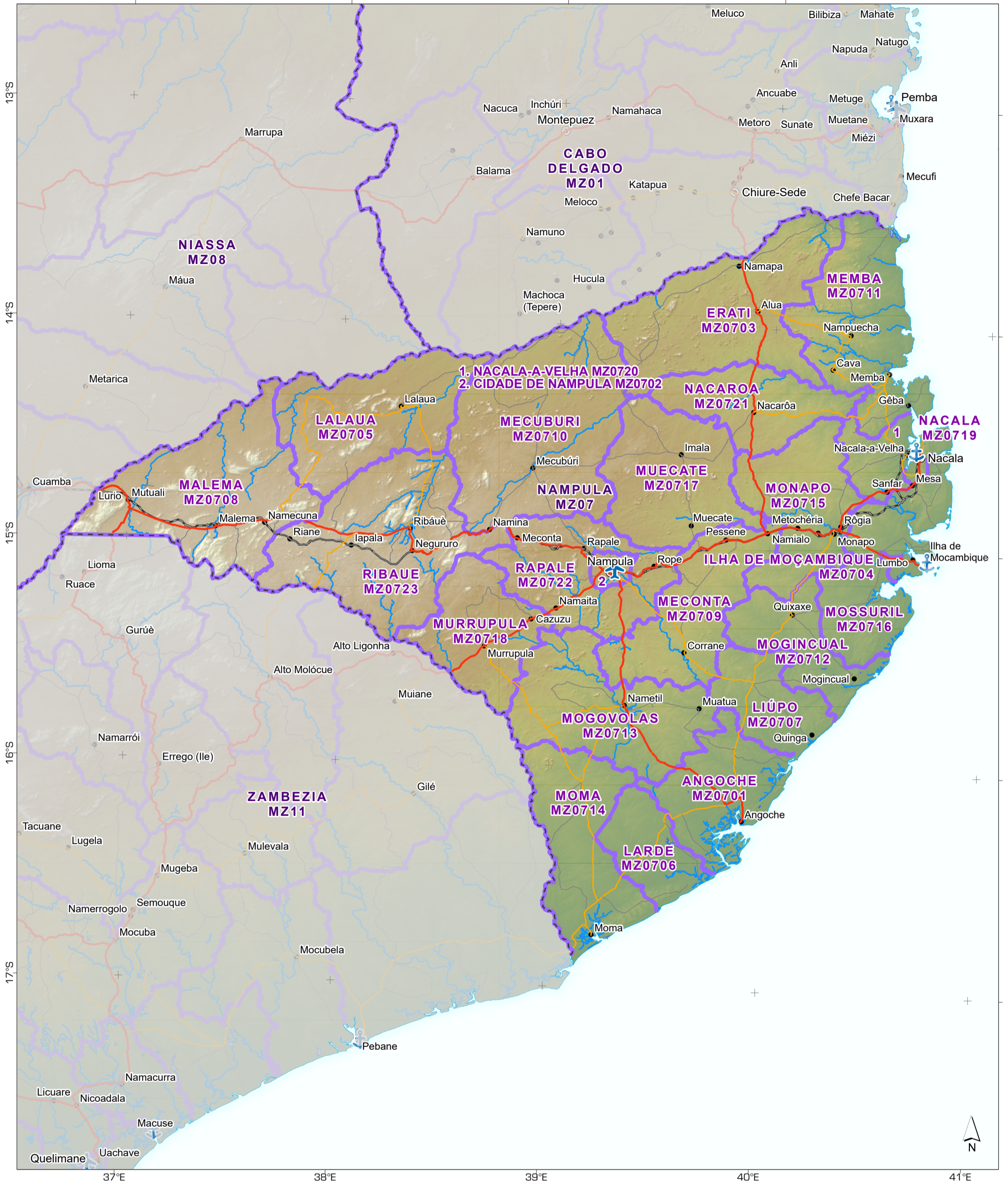


Overview of Province (admin level 1): Nampula (MZ07)



Reference map atlas per province showing overview of settlements, administrative boundaries, transport and natural features

Transport	Boundaries
Airport	District
Primary road	Province
Secondary road	International
Tertiary road	Physical
Railway	Coastline
Settlements	Lake
Capital	Elevation (m)
City	2346
Town	-5

Data Sources
 OpenStreetMap, UN, Mozambique INE (Instituto Nacional de Estatística), OurAirports, WFP, World Port Index, GMTED

The boundaries and names shown and the designations used on this map do not imply official endorsement or acceptance by the United Nations or MapAction.

100 Km

Created 15 Dec 2024 / 18:00 UTC+02:00

Projection & Datum WGS_1984_UTM_Zone_36S / WGS 1984

Produced by MapAction
<https://mapaction.org>
 info@mapaction.org