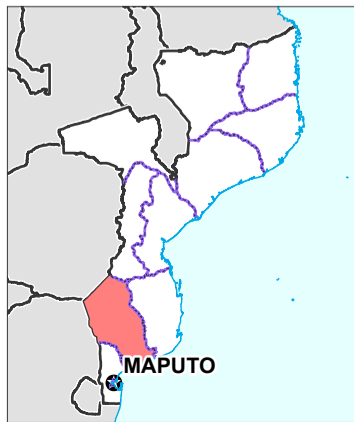
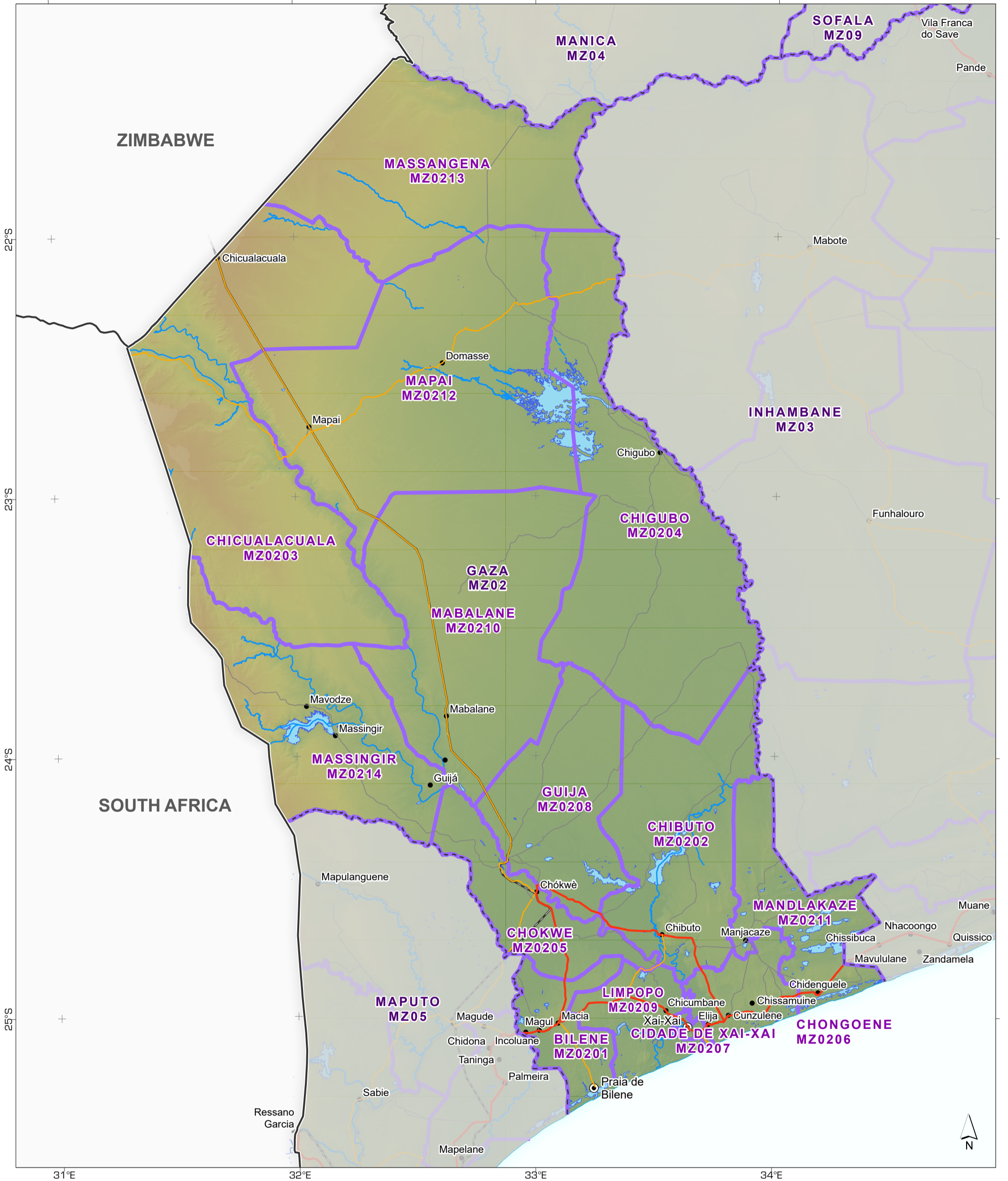


Overview of Province (admin level 1): Gaza (MZ02)



Reference map atlas per province showing overview of settlements, administrative boundaries, transport and natural features

- | | |
|--|---|
| <ul style="list-style-type: none"> — Primary road — Secondary road — Tertiary road — Railway Settlements ● Capital ● City ● Town | <ul style="list-style-type: none"> Boundaries District Province International Physical — Coastline — River ■ Lake Elevation (m) 2346 -5 |
|--|---|

Data Sources
 OpenStreetMap, UN, Mozambique INE (Instituto Nacional de Estatística), OurAirports, WFP, World Port Index, GMTED

The boundaries and names shown and the designations used on this map do not imply official endorsement or acceptance by the United Nations or MapAction.

90
Km

Created 15 Dec 2024 / 18:00 UTC+02:00

Projection & Datum WGS_1984_UTM_Zone_36S / WGS 1984

Produced by MapAction
<https://mapaction.org>
 info@mapaction.org