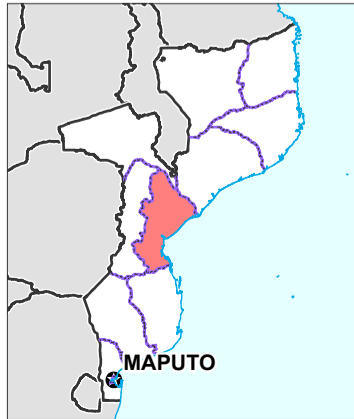
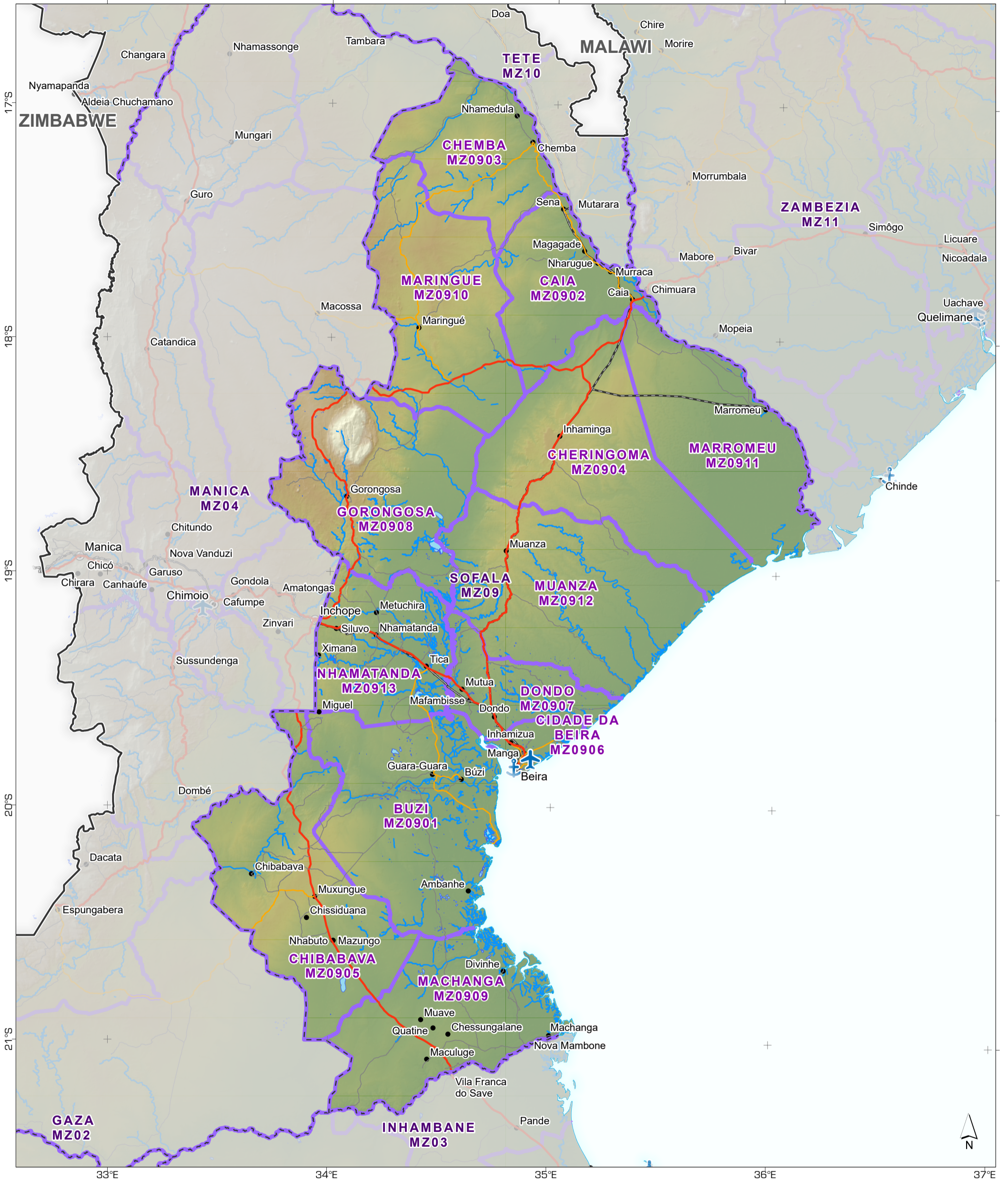


Overview of Province (admin level 1): Sofala (MZ09)



Reference map atlas per province showing overview of settlements, administrative boundaries, transport and natural features

Transport		Boundaries	
	Airport		District
	Primary road		Province
	Secondary road		International
	Tertiary road		Coastline
	Railway		River
Settlements			Lake
	Capital		Elevation (m)
	City	2346	
	Town	-5	

Data Sources
 OpenStreetMap, UN, Mozambique INE (Instituto Nacional de Estatística), OurAirports, WFP, World Port Index, GMTED

The boundaries and names shown and the designations used on this map do not imply official endorsement or acceptance by the United Nations or MapAction.

100 Km

Created 15 Dec 2024 / 18:00 UTC+02:00

Projection & Datum WGS_1984_UTM_Zone_36S / WGS 1984

Produced by MapAction
<https://mapaction.org>
 info@mapaction.org