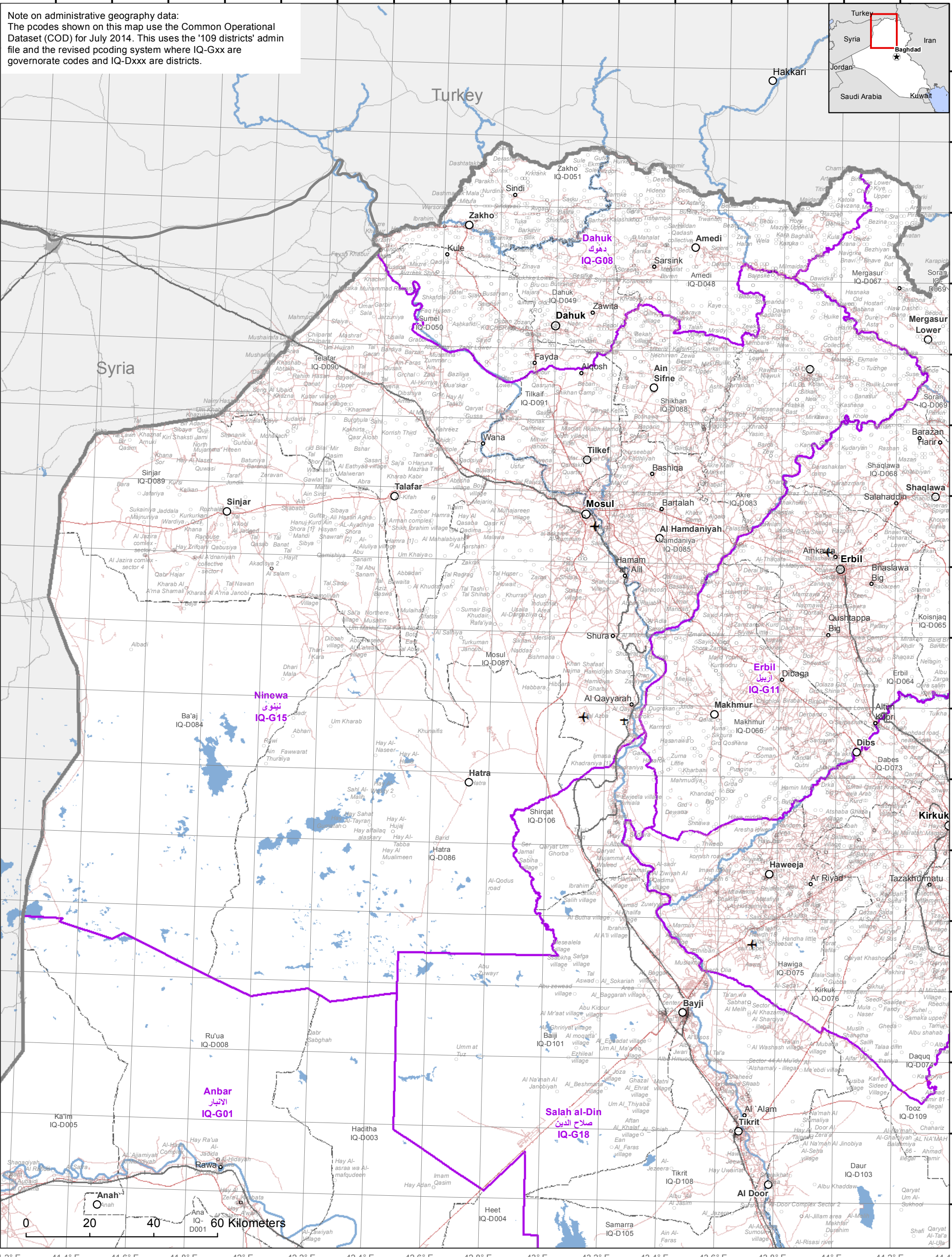


41.2° E 41.4° E 41.6° E 41.8° E 42° E 42.2° E 42.4° E 42.6° E 42.8° E 43° E 43.2° E 43.4° E 43.6° E 43.8° E 44° E 44.2° E

Note on administrative geography data:
The pcodes shown on this map use the Common Operational Dataset (COD) for July 2014. This uses the '109 districts' admin file and the revised pcoding system where IQ-Gxx are governorate codes and IQ-Dxxx are districts.



41.2° E 41.4° E 41.6° E 41.8° E 42° E 42.2° E 42.4° E 42.6° E 42.8° E 43° E 43.2° E 43.4° E 43.6° E 43.8° E 44° E 44.2° E 44.4° E

Creation date: 20 July 2014 Contacts: ocha.iraq@gmail.com www.humanitarianresponse.info/operations/iraq Sources: Governorate boundaries: COD Rivers and lakes: NIMA
Glide number: OT-2014-000074-IRQ ira@mapaction.org www.mapaction.org District boundaries: COD ('109 districts')
Settlements: COD (orig. IOM)
Roads: Logs Cluster / NIMA

The boundaries and names shown and the designations used on this map do not imply official endorsement or acceptance by the United Nations