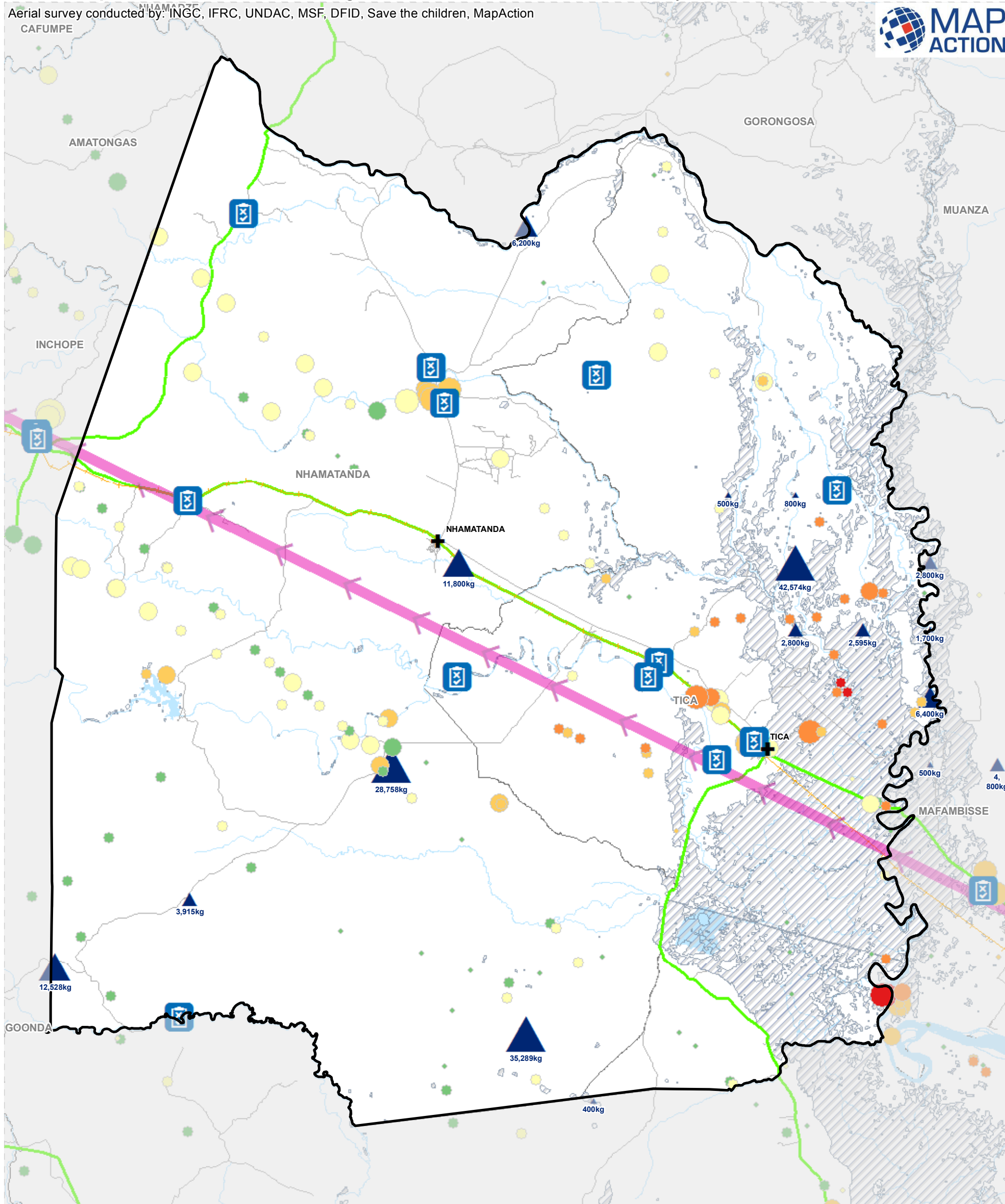


# Mozambique: Nhamatanda District - ground and aerial assessment survey locations

MA140d v01

Aerial survey conducted by: INGC, IFRC, UNDAC, MSF, DFID, Save the children, MapAction



	Assessment Location		Airports	<b>Estimated Population</b>	<b>Severity scale</b>
	Storm track	<b>Road Status (8th April)</b>		Critical	
	Waterbodies		Restricted		
	Rivers		Open		
	Flood Extent: 19.03.2019		Railway on Rehab		
	Postos		Unknown Road Status		
	<b>Food Drops Weight (kg)</b>				
	150 - 1,700				
	1,701 - 4,800				
	4,801 - 9,000				
	9,013 - 12,950				
	12,951 - 57,600				

**Data Sources:** OSM, INGC, ACAPS, WFP  
**Map created by:** MapAction