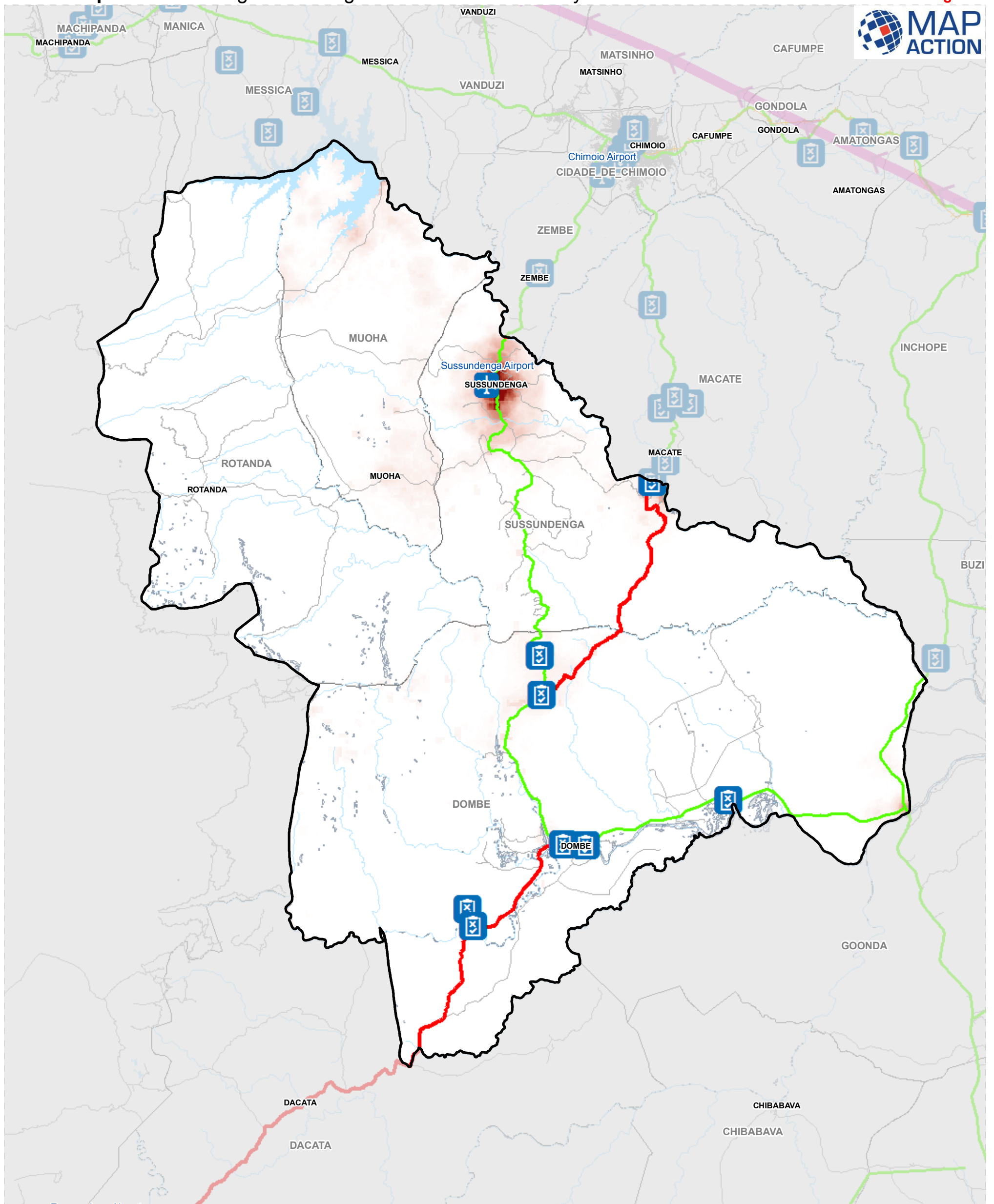
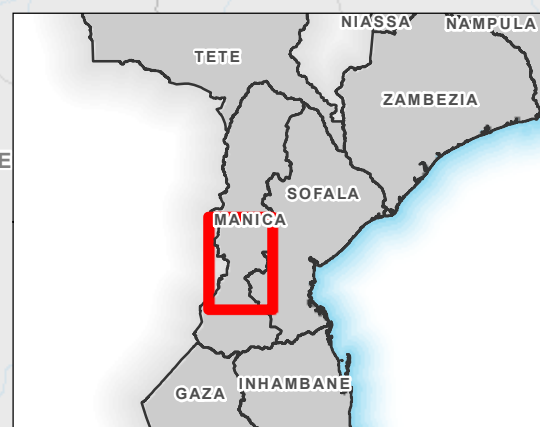
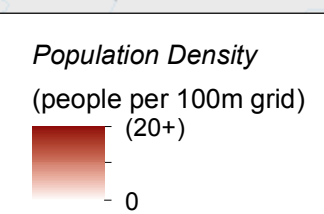


Mozambique: Sussundenga District - ground assessment survey locations

MA140g v01



	Assessment Location		Airports
	Storm track	Road Status (8th April)	
	Waterbodies		Closed
	Rivers		Restricted
	Flood Extent: 19.03.2019		Open
	Postos		Railway on Rehab
			Unknown Road Status



MUXUNGUE

5 km

Data Sources: OSM, INGC, ACAPS, WFP
Map created by MapAction