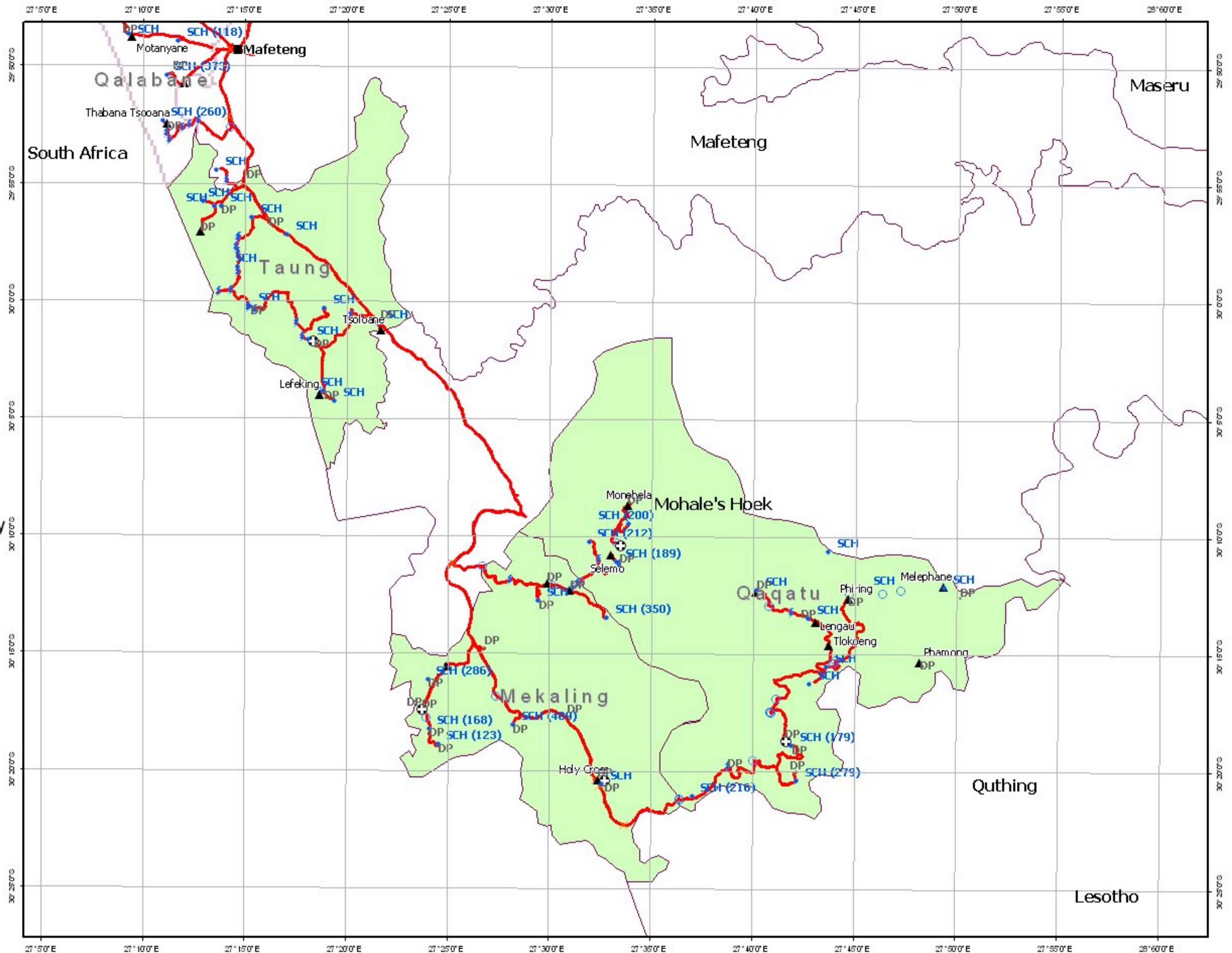
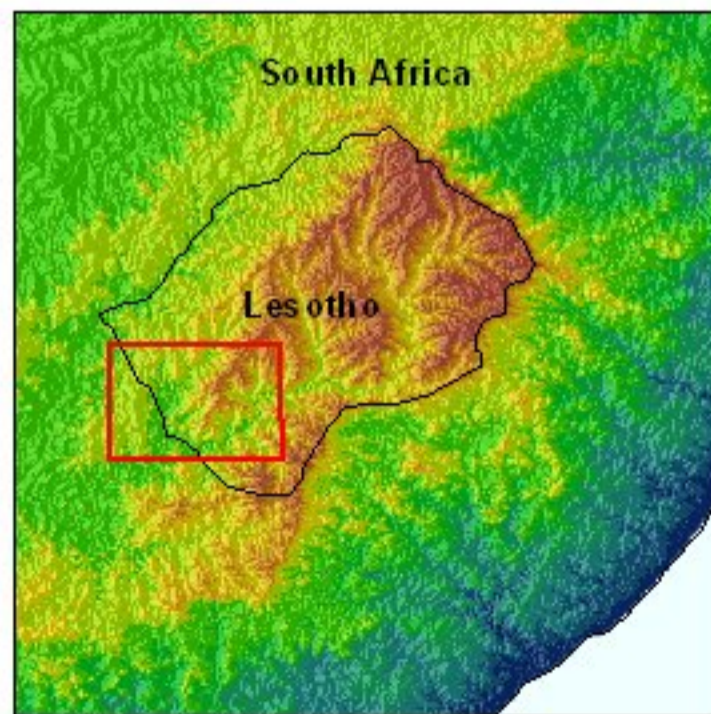
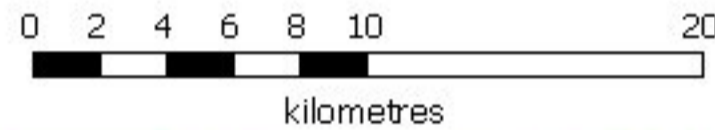


# WFP Mohale's Hoek District September 2003

## Legend

- School
- Distribution Points
- ⊕ Health Centre
- ▲ Chief's House
- Town
- Roads and tracks
- × Change of surface
- Junction
- ⚡ Ford
- Bridge
- Mohale's Hoek Constituency
- District Boundary

Map Scale = 1:300,000



### Lesotho Map 2

District: Mohale's Hoek  
Constituencies: Taung,  
Mekaling, Qaqatu  
Schools, Medical Centres  
Food Distribution Points (DP)

### Map production

Produced by Aid for Aid for  
World Food Programme, Maseru  
Date: 20 September 2003  
[www.aidforaid.org.uk](http://www.aidforaid.org.uk)  
[operations@aidforaid.org.uk](mailto:operations@aidforaid.org.uk)  
Aid for Aid makes no claim as to the  
accuracy of this map

### Data sources: vector data

Field survey by Aid for Aid with WFP and  
DMA Officers, 15-22 September 2003  
VMAP Level 0 (Vector Map of the World)  
SAHIMS ([www.sahims.net](http://www.sahims.net))  
Constituency Delimitation Order,  
Lesotho Government Gazette, 15 April 1998

### Data sources: satellite imagery

Landsat Enhanced Thematic Mapper  
Four scenes covering Lesotho:  
NW: 7 January 2001  
NE: 2 March 2001  
SW: 5 February 2001  
SE: 2 March 2001  
Imagery Provided by NPA Group  
[www.npagroup.com](http://www.npagroup.com)

### Co-ordinate system

UTM zone 35 south  
Datum WGS84