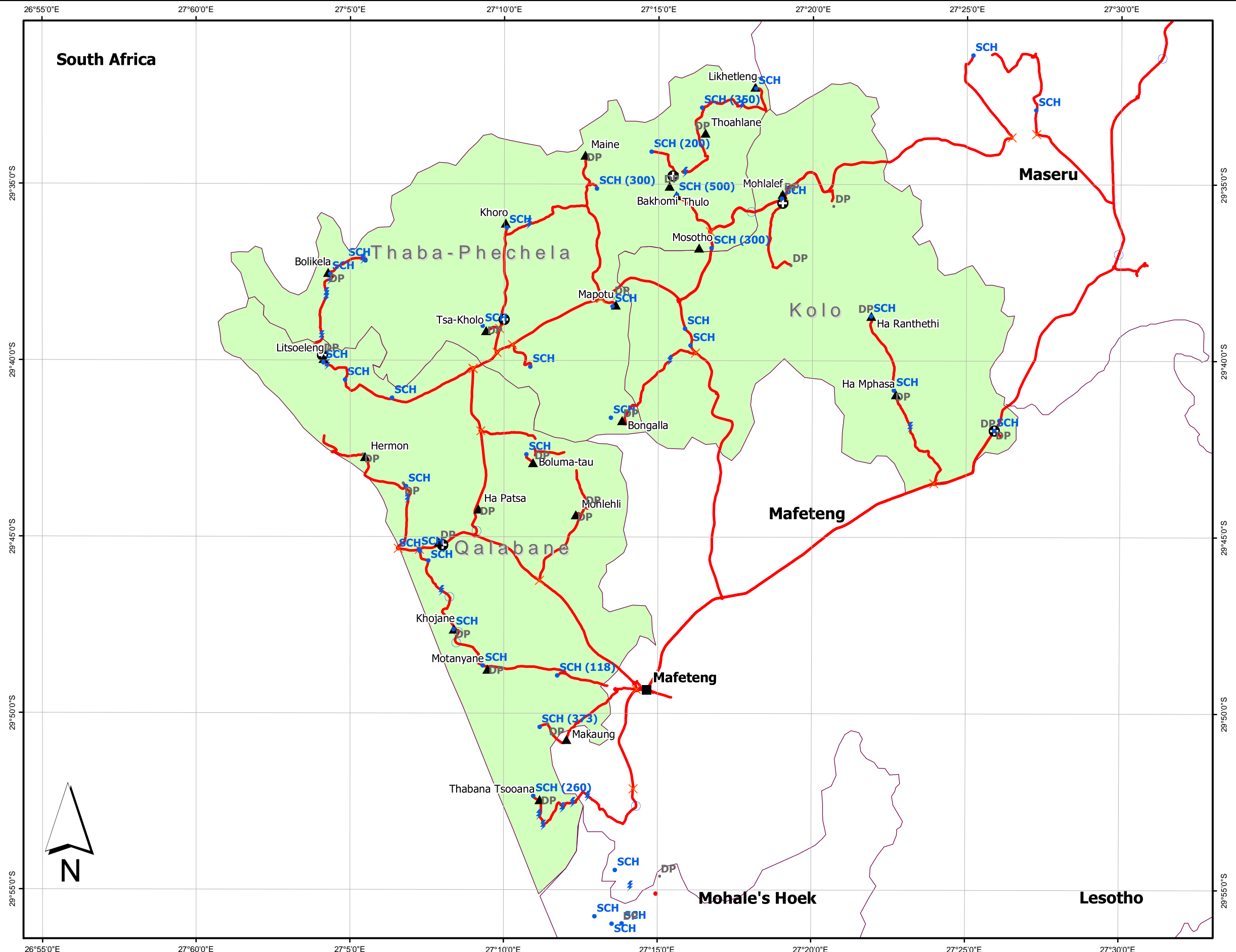
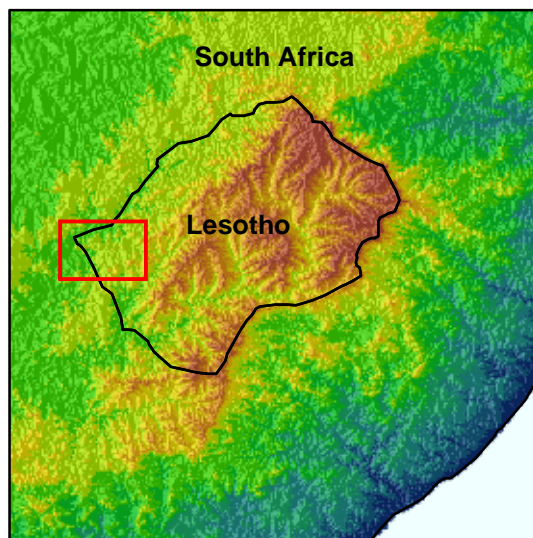
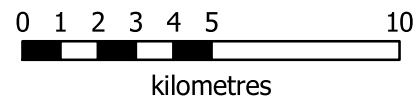


# WFP Mafeteng District September 2003

## Legend

- School
- Distribution Points
- ⊕ Health Centre
- ▲ Chief's House
- Town
- Roads and tracks
- × Change of surface
- Junction
- ⚡ Ford
- Bridge
- District Boundary
- Mafeteng Constituencies

Map Scale = 1:200,000



**Lesotho Map 1**  
District: Mafeteng  
Constituencies: Kolo, Qalabane,  
Thaba-Phechela  
Schools, Medical Centres  
Food Distribution Points (DP)

**Map production**  
Produced by Aid for Aid for  
World Food Programme, Maseru  
Date: 20 September 2003  
[www.aidforaid.org.uk](http://www.aidforaid.org.uk)  
[operations@aidforaid.org.uk](mailto:operations@aidforaid.org.uk)  
Aid for Aid makes no claim as to the  
accuracy of this map

**Data sources: vector data**  
Field survey by Aid for Aid with WFP and  
DMA Officers, 15-22 September 2003  
VMAP Level 0 (Vector Map of the World)  
SAHIMS ([www.sahims.net](http://www.sahims.net))  
Constituency Delimitation Order,  
Lesotho Government Gazette, 15 April 1998

**Data sources: satellite imagery**  
Landsat Enhanced Thematic Mapper  
Four scenes covering Lesotho:  
NW: 7 January 2001  
NE: 2 March 2001  
SW: 5 February 2001  
SE: 2 March 2001  
Imagery Provided by NPA Group  
[www.npagroup.com](http://www.npagroup.com)

**Co-ordinate system**  
UTM zone 35 south  
Datum WGS84

