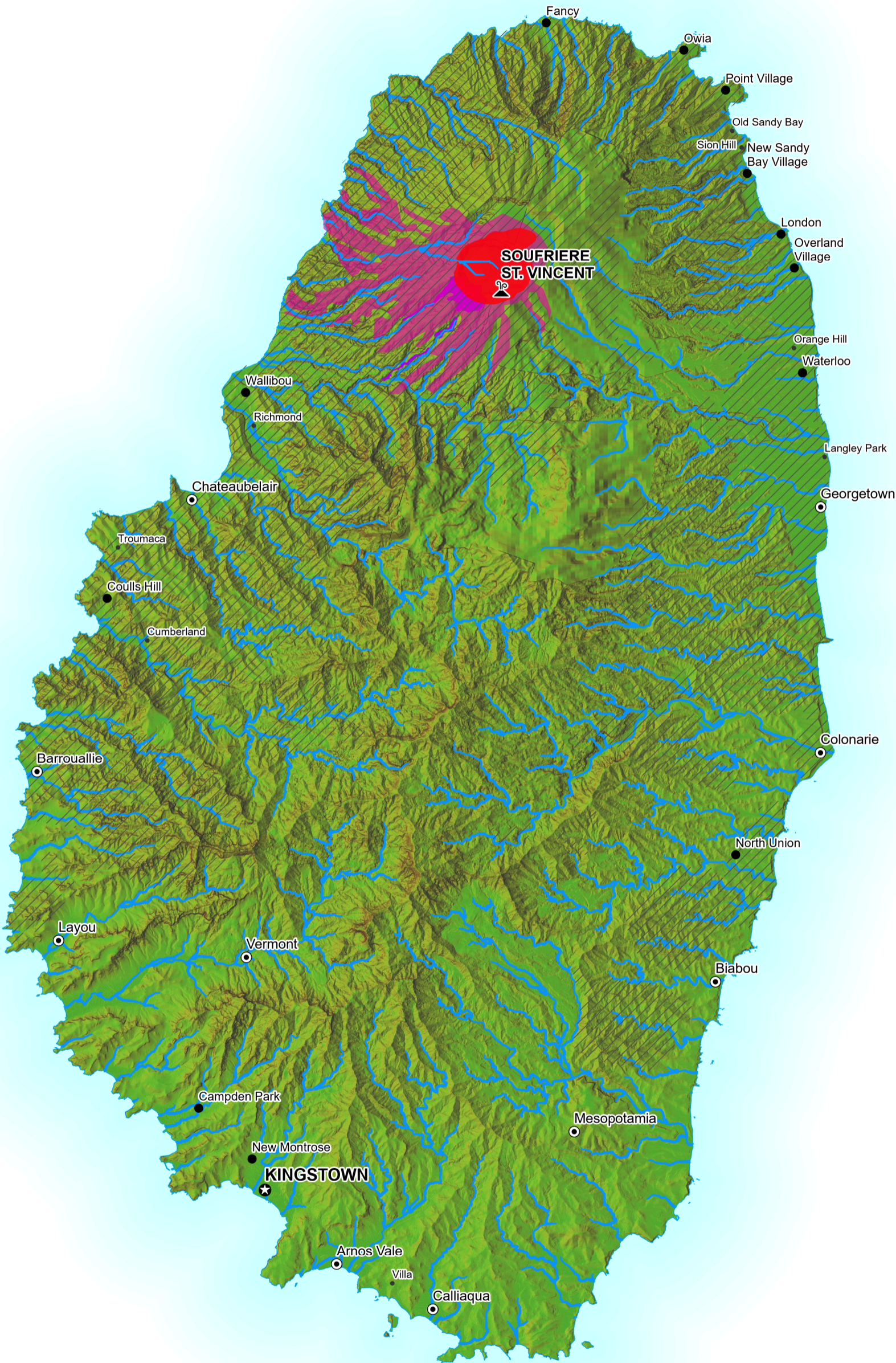
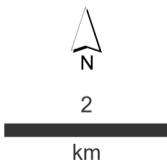


Map shows modelled drainage channels using a combination of 5m and 30m resolution elevation data. Whilst many of the channels do have water (i.e. streams and rivers) in them some may not and as such these channels are only indicative.



- Settlements
- CAPITAL
 - Town
 - Village
 - Hamlet
 - Volcano
 - Modelled drainage channels

- Observations
- Ash fall
 - Lava dome
 - Potential pyroclastic flow
 - Pyroclastic flow and surge
 - Slope (Degrees)
 - 90
 - 0



Data Sources
Physical Planning Unit, OpenStreetMap, Copernicus
Map created by MapAction (06/05/2021)