



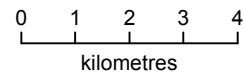
# MapAction

## Union of the Comoros: Floods - Land Cover on Anjouan

Land cover on Anjouan. The data shown on this map were not created for the purposes of disaster response, and therefore should only be used as an indication of approximate locations and types of land cover. For more information on the data see Hawlitschek O, Brückmann B, Berger J, Green K, Glaw F (2011) Integrating field surveys and remote sensing data to study distribution, habitat use and conservation status of the herpetofauna of the Comoro Islands. ZooKeys 144: 21–79 doi: 10.3897/zookeys.144.1648

### Land Cover

- Urban Dense
- Urban Open
- Plantation
- Dry Vegetation
- Forest
- Degraded Forest
- Freshwater
- Mangrove
- Severely flood affected village
- Moderately affected village
- Primary road
- Other road



Scale 1:100,000 (at A3 size)

**Data sources**  
 Situational data: COSEP  
 Settlements: COSEP  
 Land Cover: Hawlitschek O, Brückmann B, Berger J, Green K, Glaw F (2011) Integrating field surveys and remote sensing data to study distribution, habitat use and conservation status of the herpetofauna of the Comoro Islands. ZooKeys 144: 21–79 doi: 10.3897/zookeys.144.1648

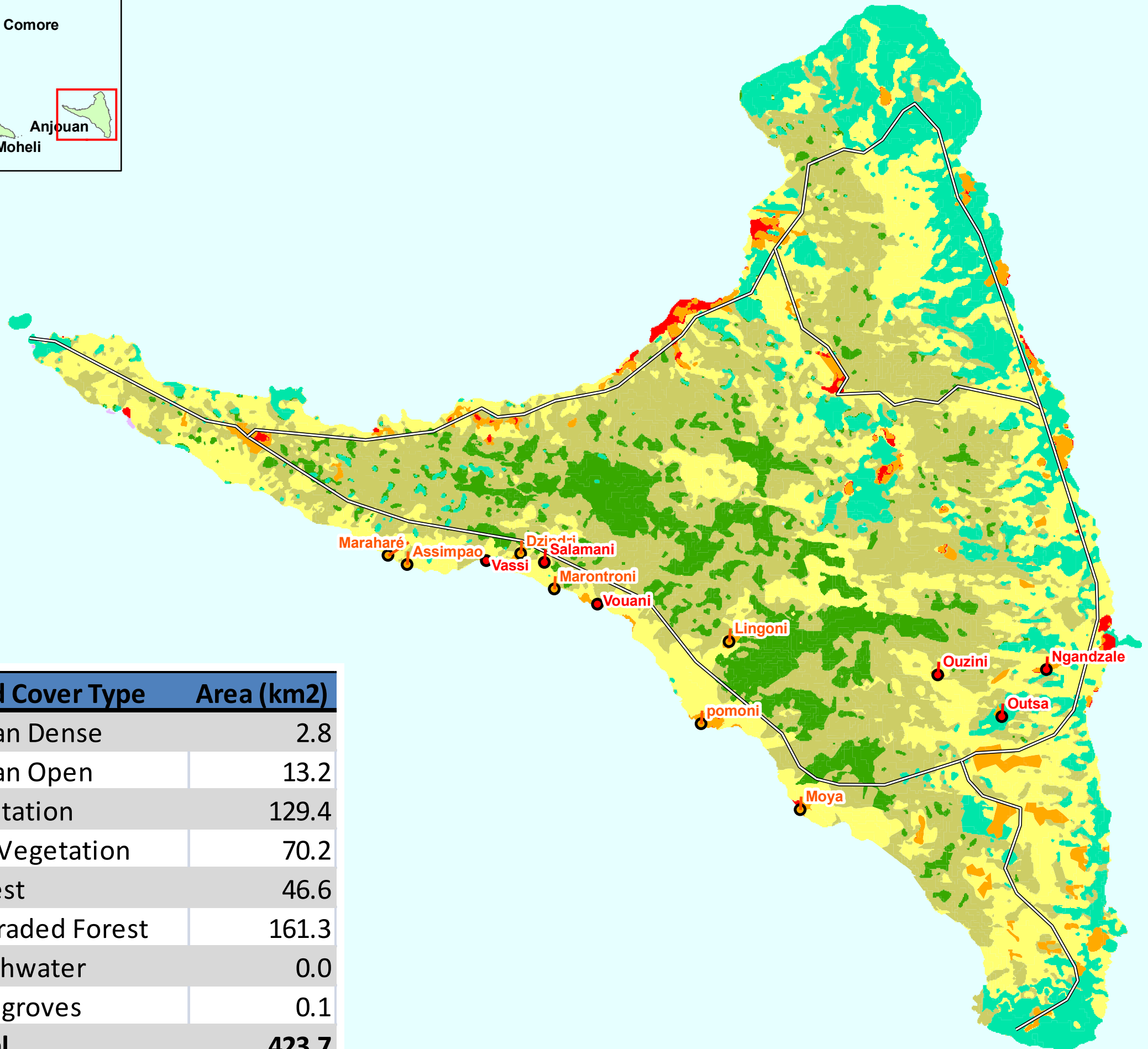
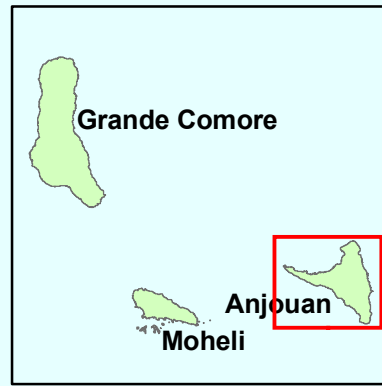
Created 9 May 2012 / 16:00  
 Map document MA025\_T00C00P00\_COM  
 Projection / datum UTM38S / WGS84  
 GLIDE Number FL-2012-000066-COM

The depiction and use of boundaries, names and associated data shown here do not imply endorsement or acceptance by MapAction.

MapAction is grateful for the support of:



Produced by MapAction [www.mapaction.org](http://www.mapaction.org)  
[Comoros@mapaction.org](mailto:Comoros@mapaction.org)



Land Cover Type	Area (km2)
Urban Dense	2.8
Urban Open	13.2
Plantation	129.4
Dry Vegetation	70.2
Forest	46.6
Degraded Forest	161.3
Freshwater	0.0
Mangroves	0.1
<b>Total</b>	<b>423.7</b>