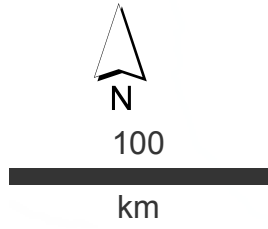
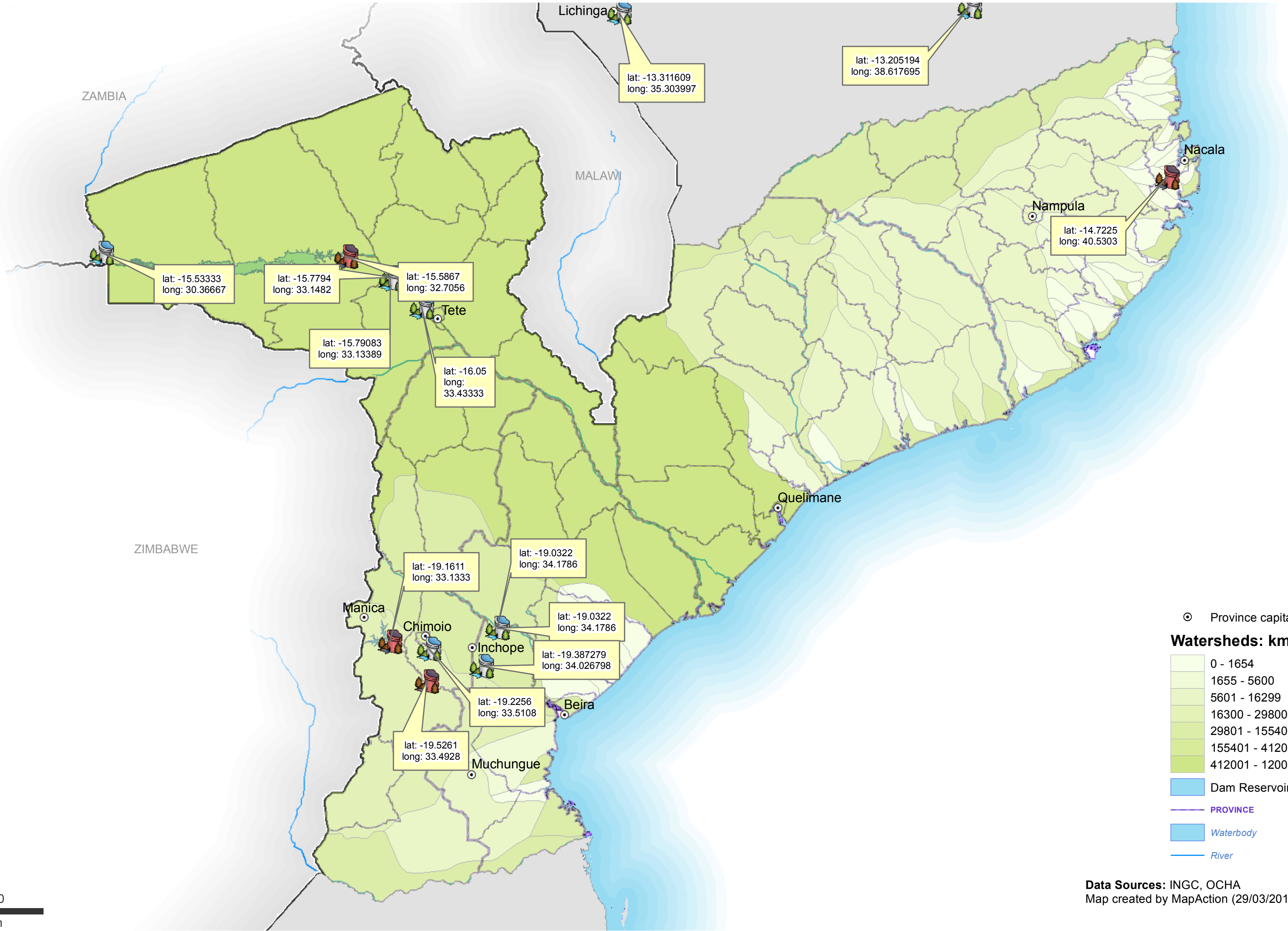


# Mozambique: Cyclone Idai - Location of Dams in affected Provinces with Watersheds



- ⊙ Province capitals

**Watersheds: km2**

- 0 - 1654
- 1655 - 5600
- 5601 - 16299
- 16300 - 29800
- 29801 - 155400
- 155401 - 412000
- 412001 - 1200000

- Dam Reservoirs
- PROVINCE
- Waterbody
- River

Data Sources: INGC, OCHA  
 Map created by MapAction (29/03/2019)