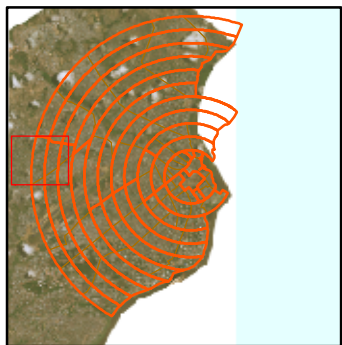




Congo:
Brazzaville Munitions
Depot Explosion -
Sub Sectors up to 6km
(as of 26 March 2012)

Sub Sector:
25A



- Sectors
- SubSectors

0:0000
0:0000
Meters

Data sources
Situational data: United Nations Mine Action Team
Satellite imagery: Coordination du projet Cadastre National



Created 26 Mar 2012 / 26:00
Map document MA108_Brazzaville_Sectors_25A

Projection / datum UTM Zone 33 South / WGS84
GLIDE Number AC-2012-000035-COG

The depiction and use of boundaries, names and associated data shown here do not imply endorsement or acceptance by MapAction.

MapAction is grateful for the support of:



Produced by MapAction www.mapaction.org
brazzaville@mapaction.org

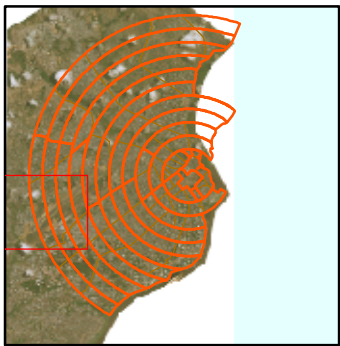




MapAction

**Congo:
Brazzaville Munitions
Depot Explosion -
Sub Sectors up to 6km
(as of 26 March 2012)**

**Sub Sector:
25B**



-  Sectors
-  SubSectors

0 2000 4000
Meters

Data sources
Situational data: United Nations Mine Action Team
Satellite imagery: Coordination du projet Cadastre National



Created 26 Mar 2012 / 26:00
Map document MA108_Brazzaville_Sectors_25B

Projection / datum UTM Zone 33 South / WGS84
GLIDE Number AC-2012-000035-COG

The depiction and use of boundaries, names and associated data shown here do not imply endorsement or acceptance by MapAction.

MapAction is grateful for the support of:





Produced by MapAction www.mapaction.org
brazzaville@mapaction.org





Congo:
Brazzaville Munitions
Depot Explosion -
Sub Sectors up to 6km
(as of 26 March 2012)
Sub Sector:
25C



-  Sectors
-  SubSectors

061224

 Meters

Data sources
 Situational data: United Nations Mine Action Team
 Satellite imagery: Coordination du projet Cadastre National



Created 26 Mar 2012 / 26:00
 Map document MA108_Brazzaville_Sectors_25C

Projection / datum UTM Zone 33 South / WGS84
 GLIDE Number AC-2012-000035-COG

The depiction and use of boundaries, names and associated data shown here do not imply endorsement or acceptance by MapAction.

MapAction is grateful for the support of:



Produced by MapAction www.mapaction.org
brazzaville@mapaction.org

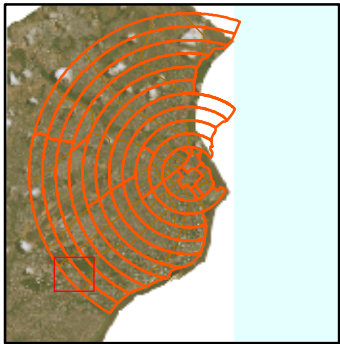




MapAction

Congo:
Brazzaville Munitions
Depot Explosion -
Sub Sectors up to 6km
(as of 26 March 2012)

Sub Sector:
25D



-  Sectors
-  SubSectors

0 91276
Meters

Data sources
Situational data: United Nations Mine Action Team
Satellite imagery: Coordination du projet Cadastre National



Created 26 Mar 2012 / 26:00
Map document MA108_Brazzaville_Sectors_25D

Projection / datum UTM Zone 33 South / WGS84
GLIDE Number AC-2012-000035-COG

The depiction and use of boundaries, names and associated data shown here do not imply endorsement or acceptance by MapAction.

MapAction is grateful for the support of:



Produced by MapAction www.mapaction.org
brazzaville@mapaction.org

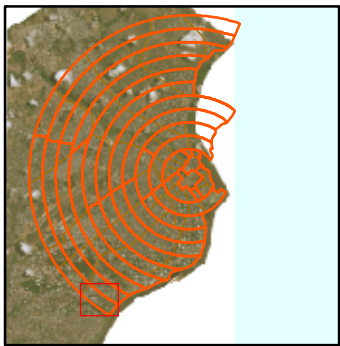






MapAction

Congo:
Brazzaville Munitions
Depot Explosion -
Sub Sectors up to 6km
(as of 26 March 2012)

Sub Sector:
25 E



-  Sectors
-  SubSectors

071228
 UUUU
 Meters

Data sources
 Situational data: United Nations Mine Action Team
 Satellite imagery: Coordination du projet Cadastre National



Created 26 Mar 2012 / 26:00
 Map document MA108_Brazzaville_Sectors_25 E

Projection / datum UTM Zone 33 South / WGS84
 GLIDE Number AC-2012-000035-COG

The depiction and use of boundaries, names and associated data shown here do not imply endorsement or acceptance by MapAction.

MapAction is grateful for the support of:



Produced by MapAction www.mapaction.org
brazzaville@mapaction.org