

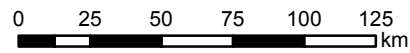


MapAction

Benin: Flooding - Telephone Assessments conducted by CARE up to 16 July 2009

SUMMARY: Telephone Assessments conducted by CARE up to 16th July, 2009. Map shows localities reporting various problems; Water, sanitation, infrastructure, health and food issues.

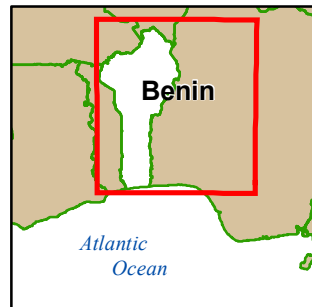
In table, places in bold have not been located on maps. Any assistance in locating these villages gratefully received through benin@mapaction.org



Scale 1:250 000 at A3 size

Created	17 Jul 2009 / 18:00
Map document	MA012-Benin-CAREAssess-v01-A3L
Projection / datum	UTM Zone 31N / WGS84
GLIDE Number	FL-2009-000127-BEN

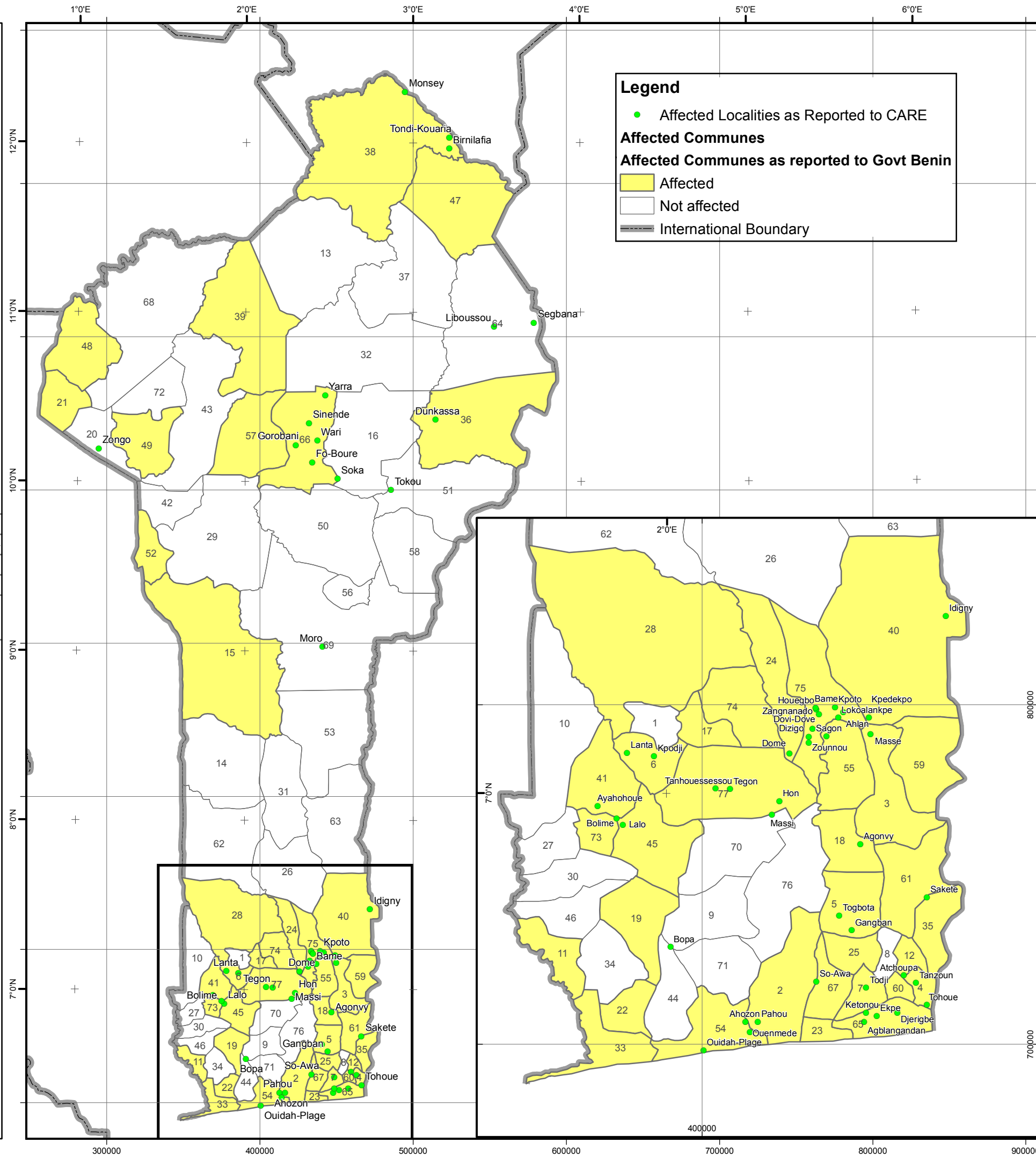
The depiction and use of boundaries, names and associated data shown here do not imply endorsement or acceptance by MapAction.



Data sources:
 Assessment Data - CARE and Govt. of Benin
 Administrative Data - GAUL
 Settlements - NGA

www.mapaction.org
benin@mapaction.org

MapAction is grateful for the support of DFID



Index to Communes		Full list of localities contacted by CARE that reported inundation effects	
No	Commune	ID	Locality
1	Abomey	1	Asrotcha Agbakon
2	Abomey-calavi	2	Gangban
3	Adja-ouere	3	Ganna
4	Adjarra	4	Hankpa
5	Adjohoun	5	Houdda
6	Agbangnizou	6	Houedo
7	Aguegues	7	Todji
8	Allada	8	Togbota
9	Aplahoue	9	Aguegues
10	Athieme	10	Atchoupa
11	Avrankou	11	Male
12	Bante	12	Tanzoun
13	Bassila	13	Bopa
14	Bembereke	14	Monsourrou
15	Bohicon	15	Dunkassa
16	Bonou	16	Birnilafia
17	Bopa	17	Monsey
18	Boukoubme	18	Monsouy-Dendi
19	Cobly	19	Pechiga
20	Come	20	Tondi-Kouaria
21	Cotonou	21	Idigny
22	Cove	22	Ketonou
23	Dangbo	23	Adjahoume
24	Dassa	24	Awogbeya
25	Djakotome	25	Ayahohoue
26	Djidja	26	Djotto
27	Djougou	27	Hondje
28	Dogbo-tota	28	Houndjin
29	Glazoue	29	Houngbeya
30	Gogounou	30	Klookamey
31	Grand-popo	31	Lanta
32	Houeyogbe	32	Tchinkpe
33	Ifangni	33	Lalo
34	Kalale	34	Lalo
35	Kandi	34	Ahozon
36	Karimama	35	Akadjeme
37	Kerou	36	Houndja
38	Ketou	37	Liboussou
39	Klouekanne	38	Ouenmede
40	Kopargo	39	Ouidah-Plage
41	Kouande	40	Pahou
42	Kpomasse	41	Zongo
43	Lalo	42	Masse
44	Loakossa	43	Sagon
45	Malanville	44	Tohoue
46	Materi	45	Ibo eye
47	Matsi	46	Miroko
48	Moro	47	Moro
49	Natitingou	48	Sakete
50	Ndali	49	Sakete
51	Nikki	50	Tokou
52	Ouake	51	Sebgana
53	Ouesses	52	Agblangandan
54	Ouidah	53	Aholouyeme
55	Ouinhi	54	Djerigbe
56	Parakou	55	Ekpe
57	Pehunko	56	Kpodji
58	Perere	57	Tohoue
59	Pobe	58	Fo-Boure
60	Porto-novo	59	Gorobani
61	Sakete	60	Sinende
62	Savalou	61	Sinende
63	Save	62	Sinende
64	Segbana	63	Yarra
65	Seme-kpodji	64	So-Awa
66	Sinende	65	Agonyvy
67	So-ava	66	Zagnanado
68	Tanguieta	67	Zagnanado
69	Tchaourou	68	Bame
70	Toffo	69	Clobo
71	Tori-bossito	70	Dizigo
72	Toukountouna	71	Dovi-Dove
73	Toviklin	72	Houegbo
74	Zakpota	73	Kpedekpo
75	Zagnanado	74	Kpoto
76	Ze	75	Lokoalankpe
77	Zogbodome	76	Sagbovi
		77	Wokpa
		78	Zagnanado
		79	Zounnou
		80	Agadjoligbo
		81	Bolime
		82	Dome
		83	Hon
		84	Kindo
		85	Kouri
		86	Kposilika
		87	Massi
		88	Tanhouessou
		89	Tegon
		90	Zalime
		91	Zinga