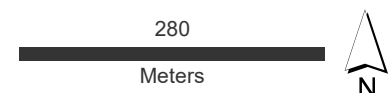


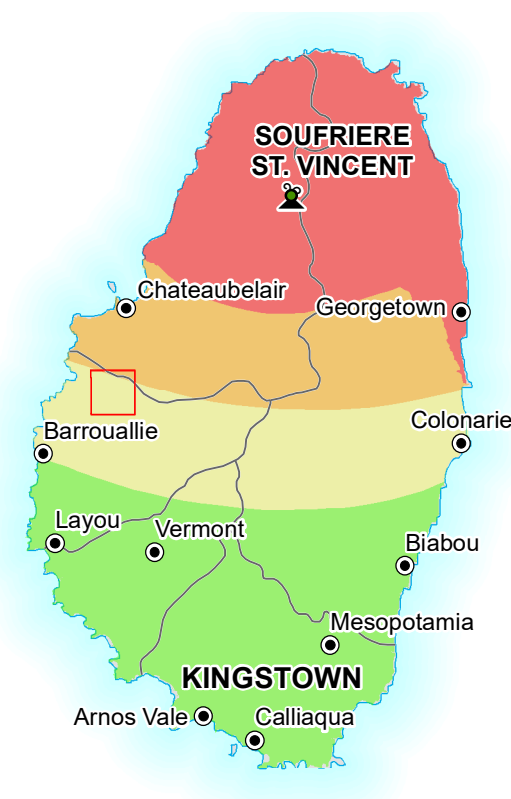
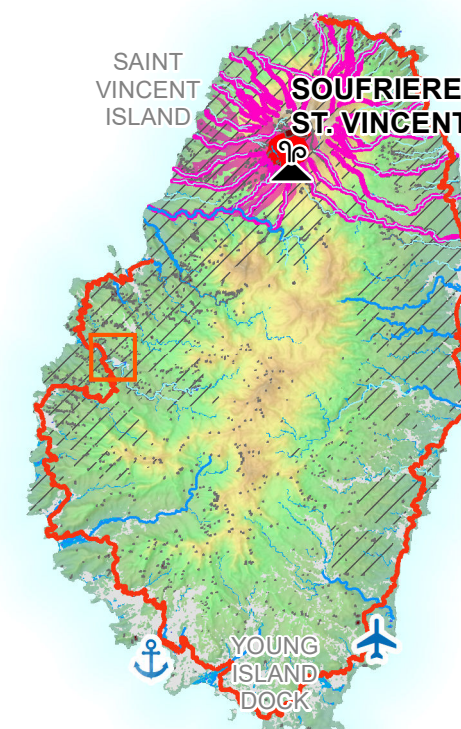
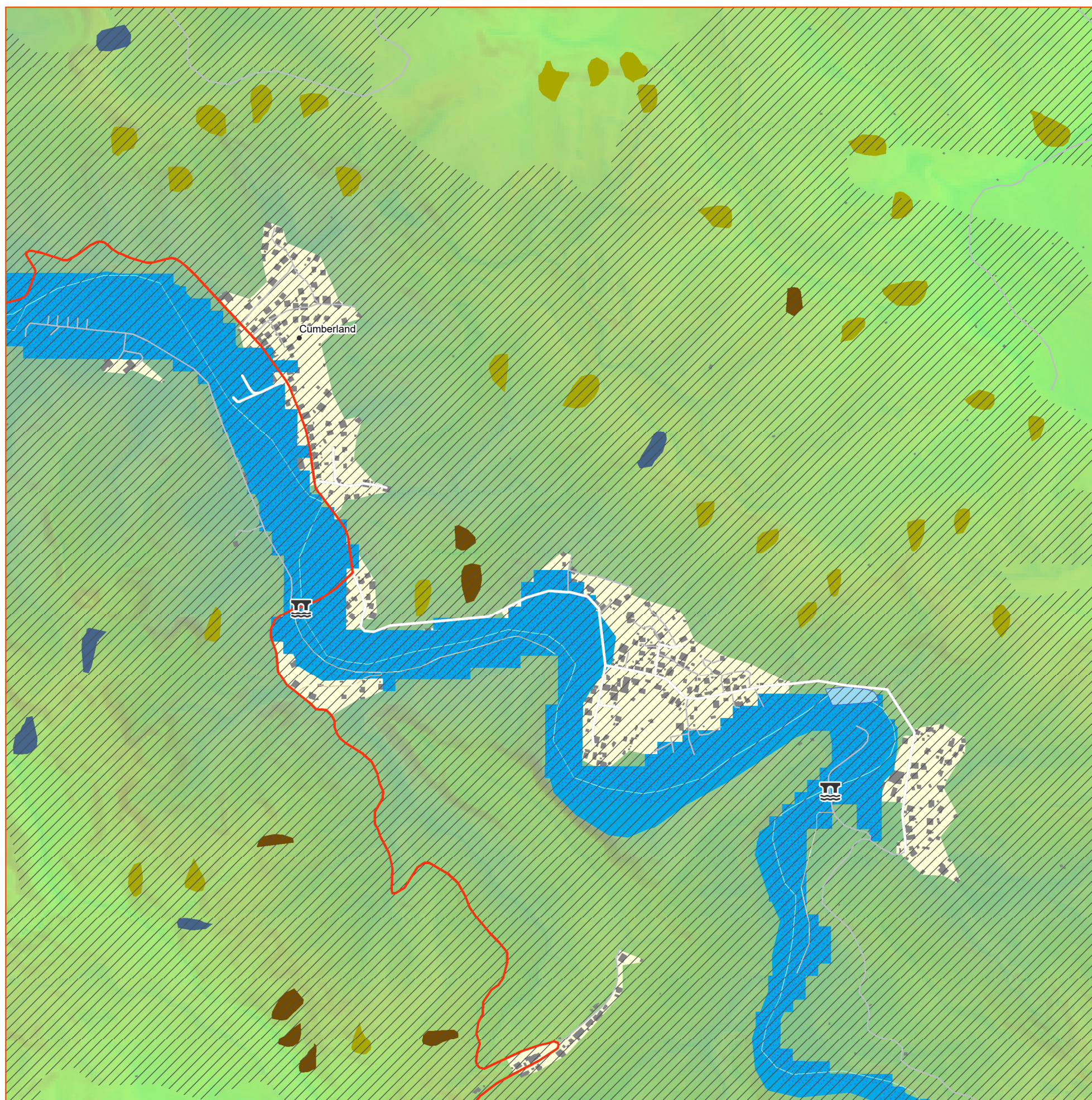
Map showing possible impacts of a modelled volcanic hazards (specifically landslides and possible routes for lahars) and hydrological hazard (specifically flash flood). The modelled datas were created before the eruptions of 2021 and the April 29, 2021 rainfall. However, the reports on impacts of the rainfall may coincide with the modelled data.

-  Volcano
- Observations**
  -  Ash fall
  -  Lava dome
  -  Potential pyroclastic flow
  -  Pyroclastic flow and surge
- Modelled events**
  -  Route for potential lahars
  -  Flashflood
- Landslide**
  -  Debris flow
  -  Debris slide
  -  Deep seated rockslide
  -  Rockslide
  -  Shallow landslide
  -  Stream flood debris flow
- Settlements**
  -  CAPITAL
  -  Town
  -  Village
  -  Hamlet
- Physical**
  -  River
  -  Stream
- Waterbodies**
  -  Waterbody
  -  Wetland
- Landuse**
  -  Building
  -  Built up area
- Transport**
  -  Airport
  -  Bridge
  -  Seaport
- Roads**
  -  Primary
  -  Secondary
  -  Tertiary
  -  Service
  -  Residential
  -  Track



**Data Sources**  
GADM, OpenStreetMap, SRTM, GeoCris, UWISismic

Map created by MapAction  
(04/05/2021)



**Hazard risk**

