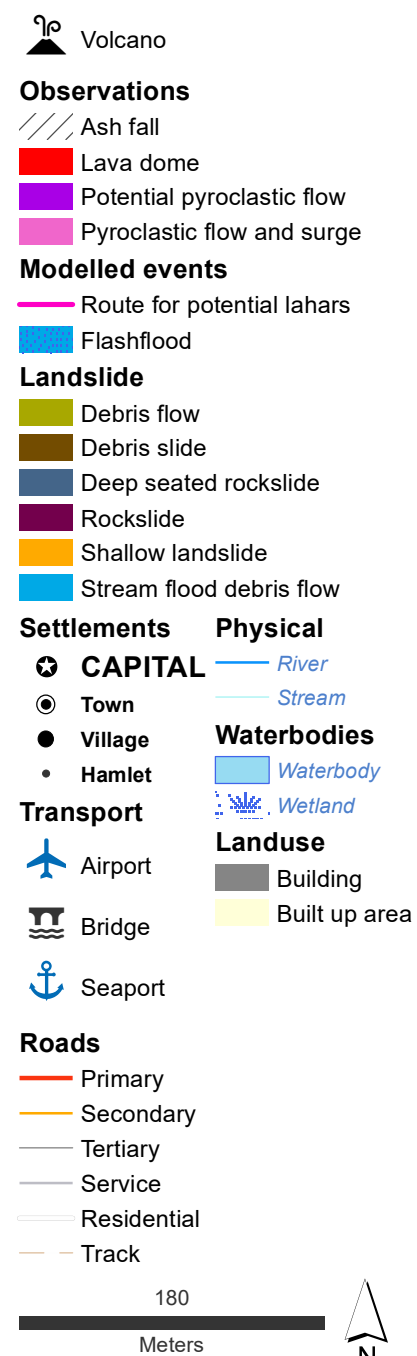
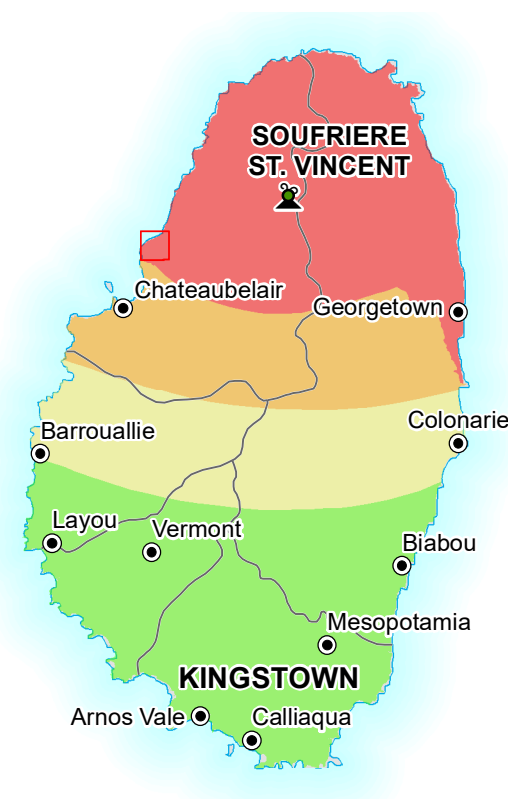
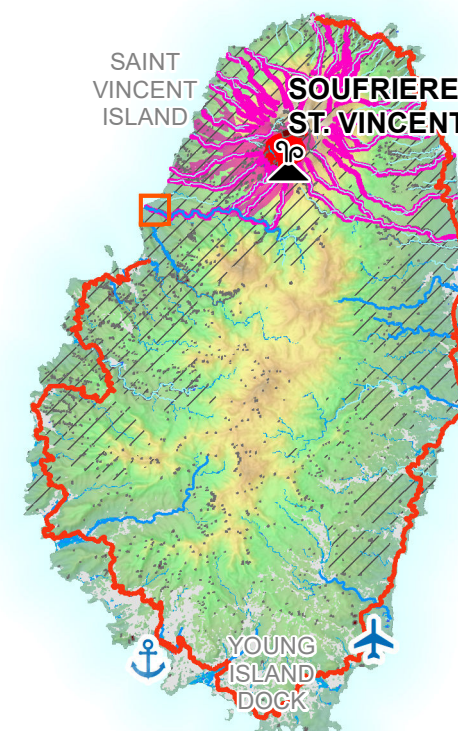
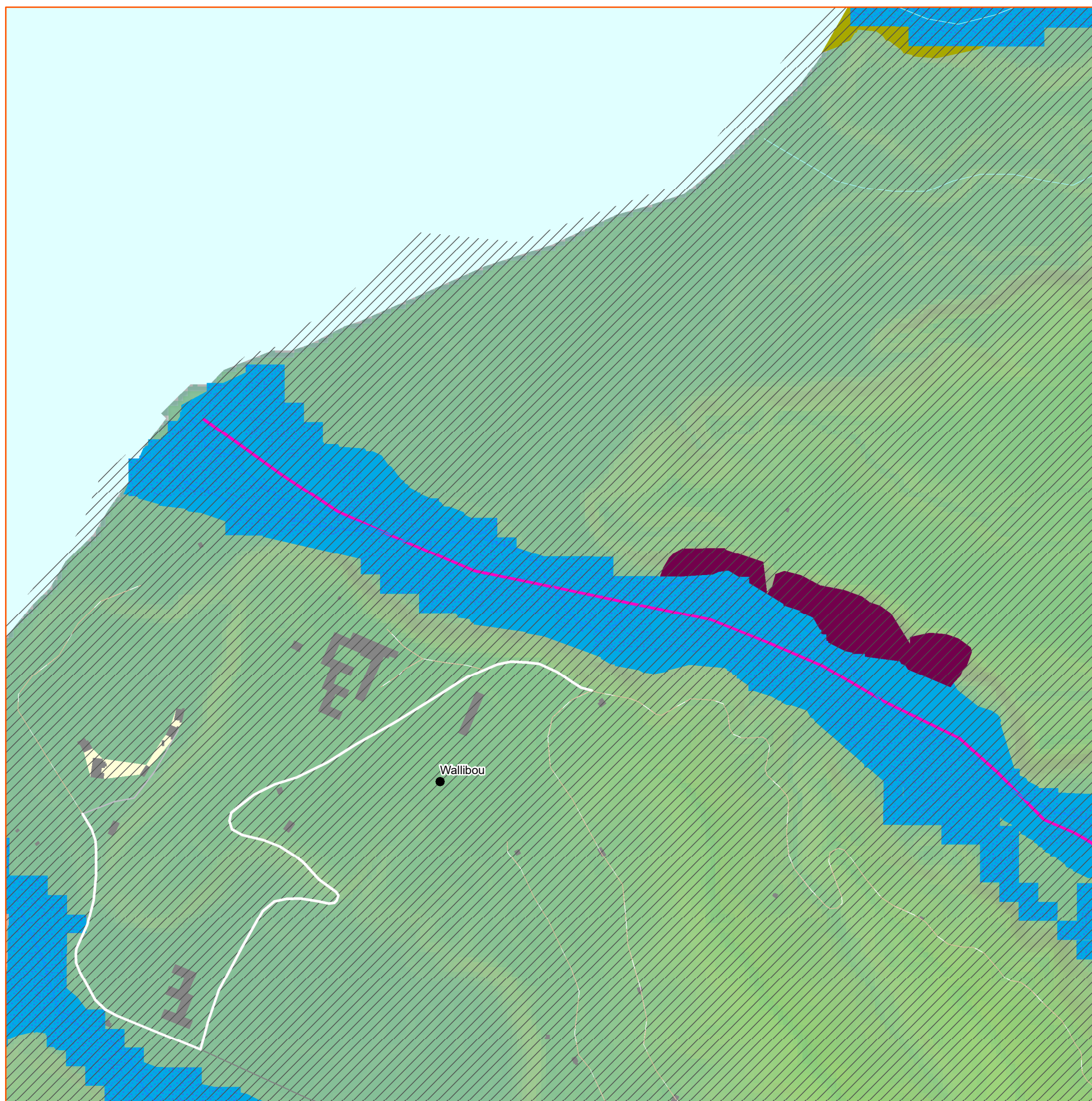


Map showing possible impacts of a modelled volcanic hazards (specifically landslides and possible routes for lahars) and hydrological hazard (specifically flash flood). The modelled datas were created before the eruptions of 2021 and the April 29, 2021 rainfall. However, the reports on impacts of the rainfall may coincide with the modelled data.



Data Sources
GADM, OpenStreetMap, SRTM, GeoCris, UWISismic

Map created by MapAction
(04/05/2021)



Hazard risk

