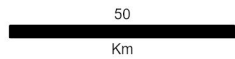


Reference map showing main settlements, transport links, elevation, water features and administrative boundaries

- | | |
|---------------------|----------------------|
| Settlements | Roads |
| 📍 National capital | 🔴 Primary |
| 🏙 City | 🟡 Secondary |
| ● Town | 🚂 Railway |
| Borders | Physical |
| — International | 🌊 River |
| — Province | 🧊 Glacier |
| ⋯ Disputed boundary | 🟦 Lake |
| Transport | 🟦 Reservoir |
| ⚓ Seaport | 🌿 Wetland |
| ✈ Airport | Elevation (m) |
| | 🟡 7600 |
| | 🟢 -6 |



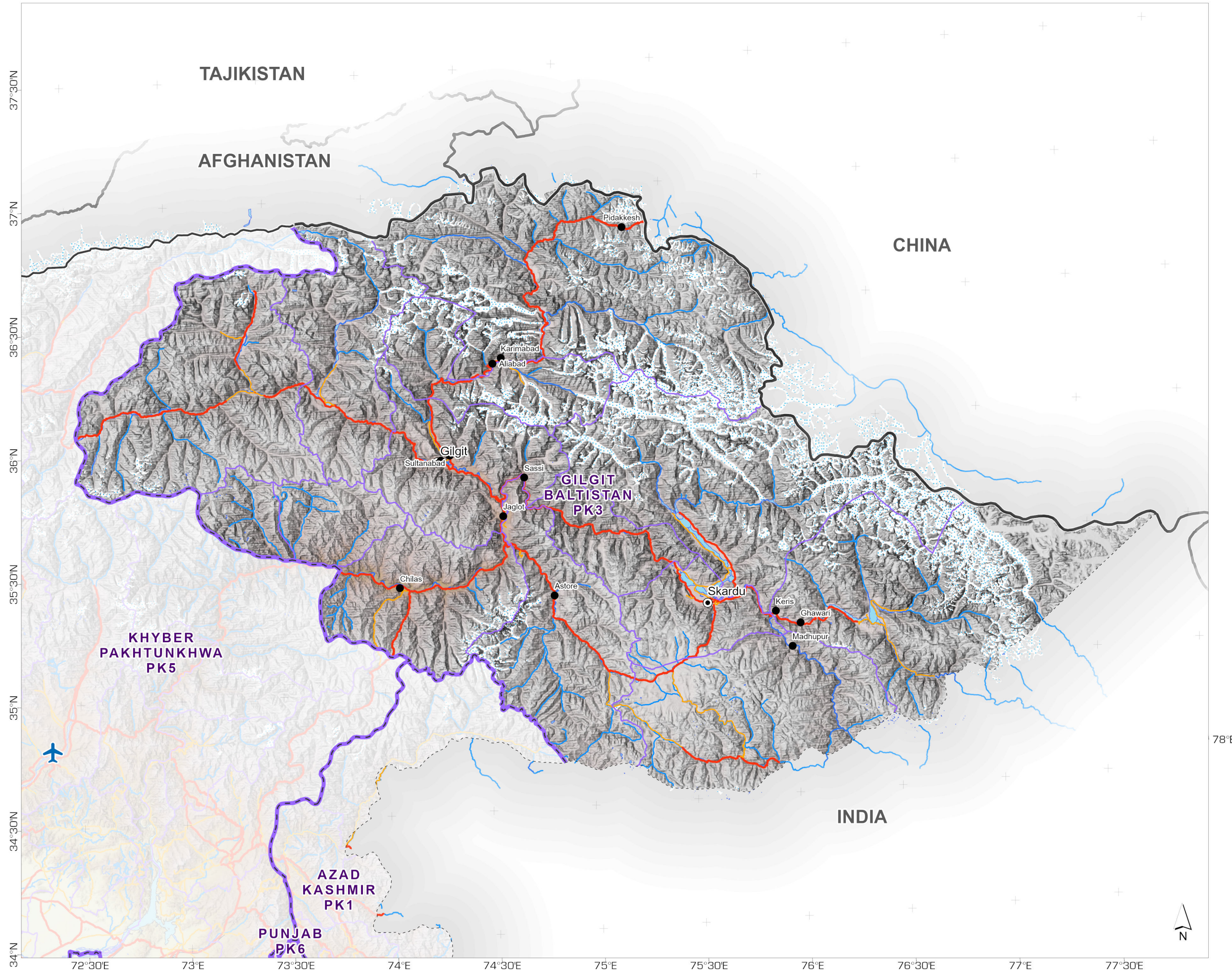
Data Sources

OpenStreetMap, Our Airports, World Port Index, GMTED, WFP, Pakistan Census Office, GADM, Natural Earth

Created 31 Aug 2022 / 19:00 UTC+05:00
GLIDE Number FL-2022-000270-PAK

Produced by MapAction
<https://mapaction.org>
pakistan@mapaction.org

Supported by the German Federal Foreign Office.
The depiction and use of boundaries, names and associated data shown here do not imply endorsement or acceptance by MapAction. Dotted line represents approximately the Line of Control in Jammu and Kashmir agreed upon by India and Pakistan. The final status of Jammu and Kashmir has not yet been agreed upon by the parties



78°E

