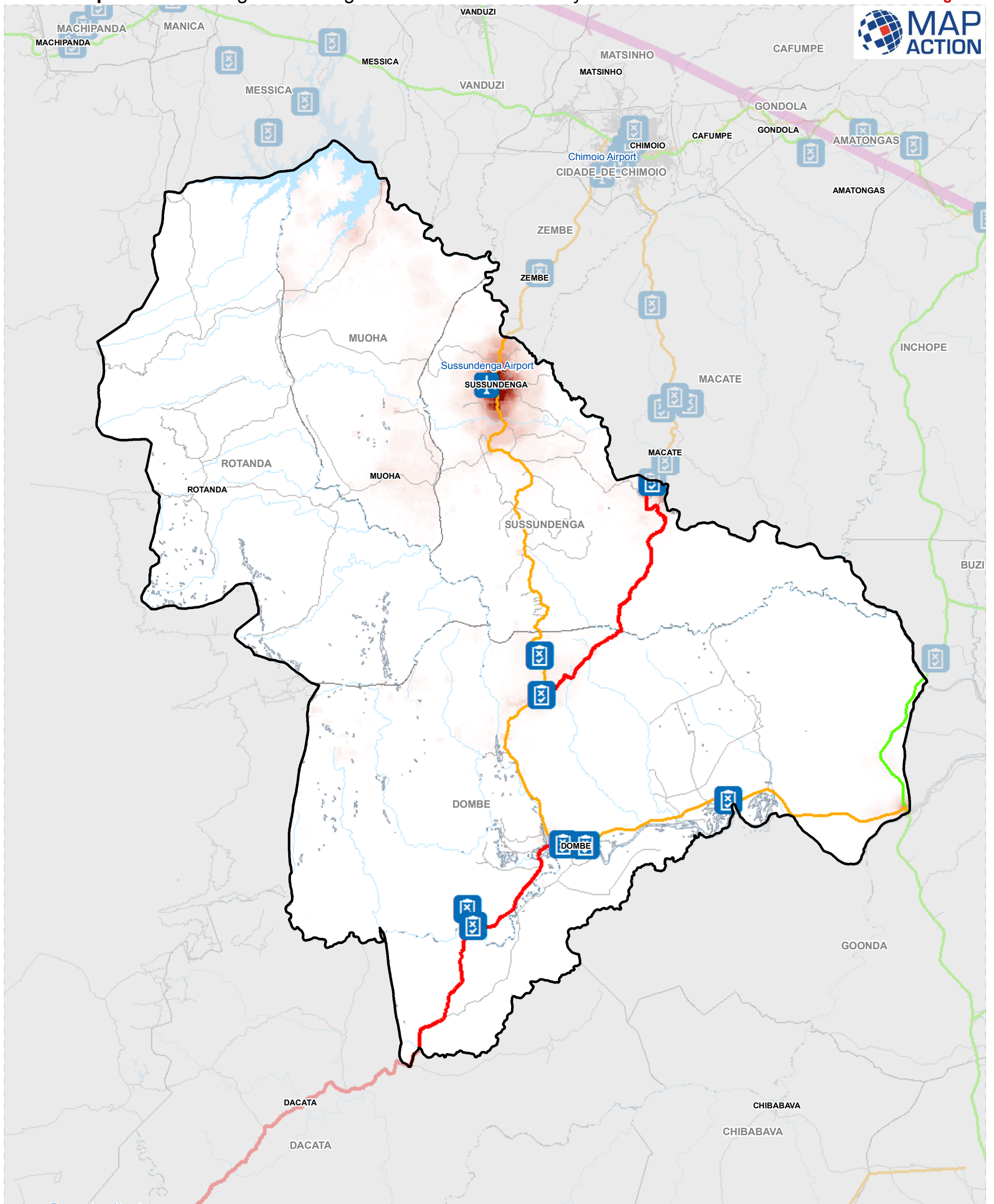
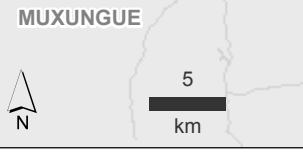
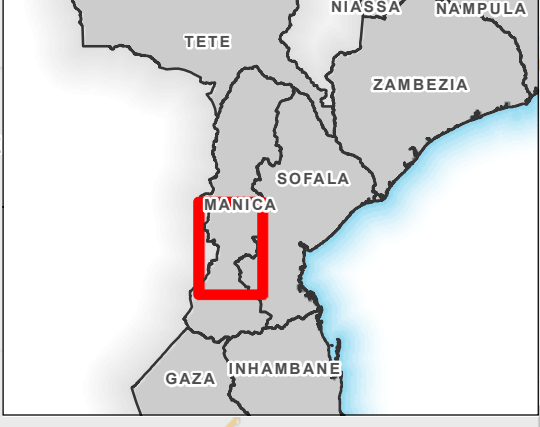
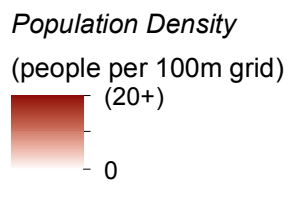


# Mozambique: Sussundenga District - ground assessment survey locations

MA140g v02



	Assessment Location		Airports
	Storm track	<b>Road Status (8th April)</b>	
	Waterbodies		Closed
	Rivers		Restricted
	Flood Extent: 19.03.2019		Open
	Postos		Railway on Rehab
			Unknown Road Status



**Data Sources:** OSM, INGC, ACAPS, WFP  
Map created by MapAction (11/04/2019)