

Guatemala: Hurricane Eta / Iota

Populations potentially exposed to high and very high impact based on multi-hazard forecasting



Map shows the population in high or very high categories of exposure to hazards. The hazards considered include flash floods, landslides, floods, lahars, high swells and winds. The model assessed exposure to these hazards based on a combination of accumulated precipitation, precipitation forecast and soil humidity.

Total population in these areas is **6,018,600**

Municipalities with the highest populations in these highest hazard areas are shown in the table.

Population in High or Very High Impact areas

- 1 - 1,000
- 1,001 - 5,000
- 5,001 - 10,000
- 10,001 - 20,000
- 20,001 - 37,847

Previous Impacts

- ▲ Flash flood
- ▲ Landslide
- ▲ Flood
- ▲ Lahar
- ▲ High swell
- ▲ Winds

Borders

- International
- Disputed
- DEPARTMENTS
- MUNICIPALITIES

Settlements

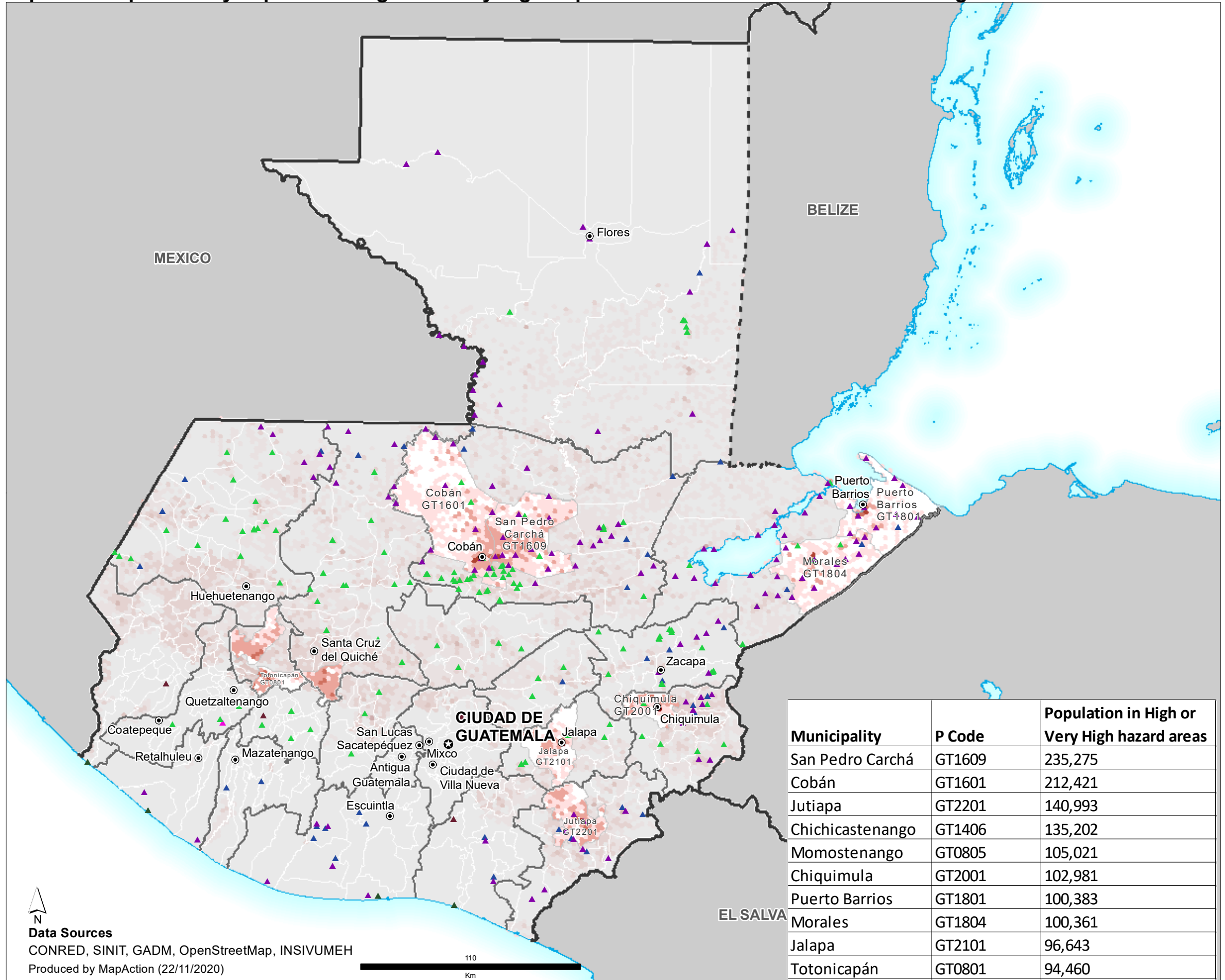
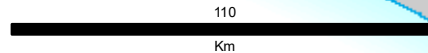
- ⊕ CAPITAL
- City



Data Sources

CONRED, SINIT, GADM, OpenStreetMap, INSIVUMEH

Produced by MapAction (22/11/2020)



Municipality	P Code	Population in High or Very High hazard areas
San Pedro Carchá	GT1609	235,275
Cobán	GT1601	212,421
Jutiapa	GT2201	140,993
Chichicastenango	GT1406	135,202
Momostenango	GT0805	105,021
Chiquimula	GT2001	102,981
Puerto Barrios	GT1801	100,383
Morales	GT1804	100,361
Jalapa	GT2101	96,643
Totonicapán	GT0801	94,460