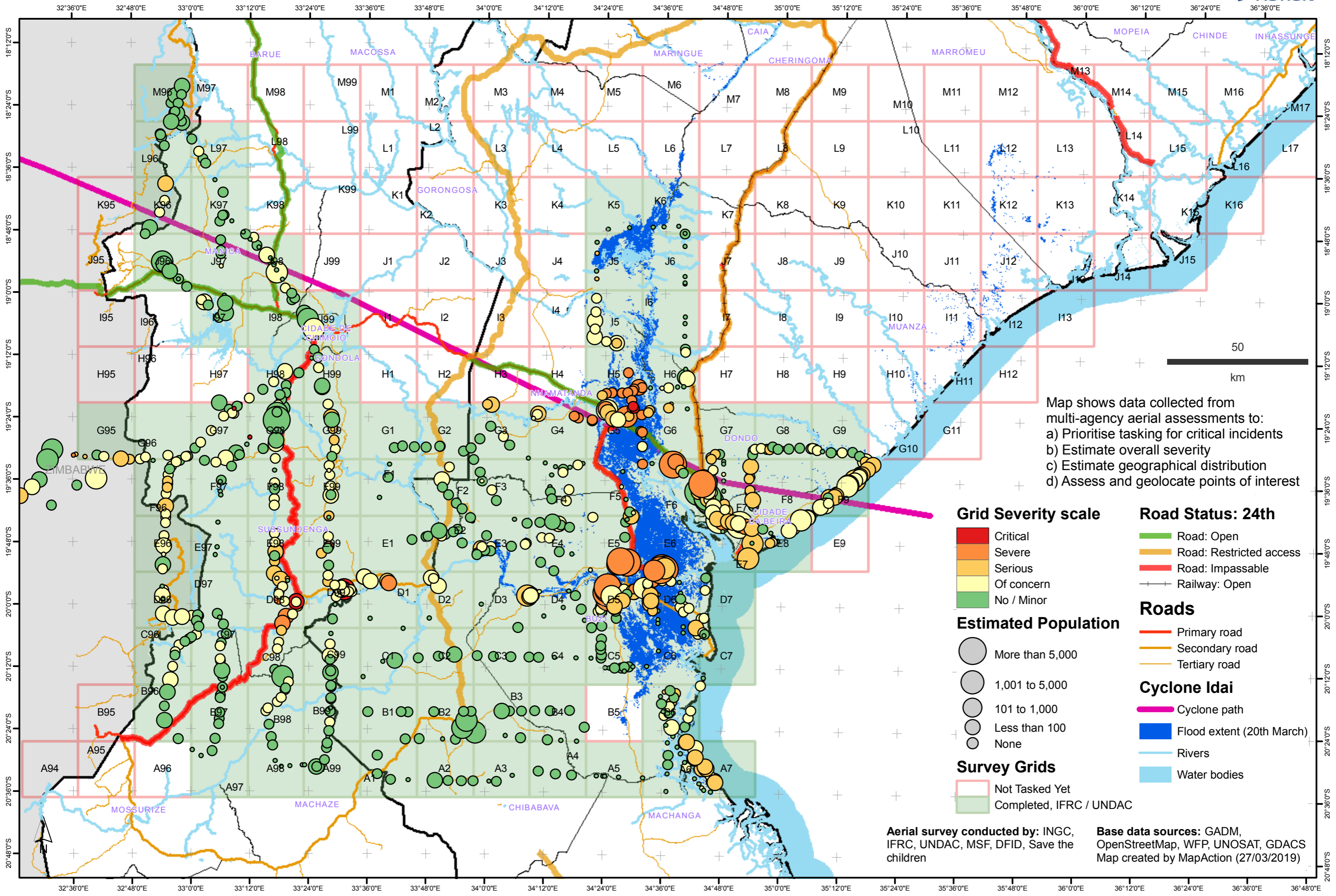


Mozambique: Cyclone Idai - results and analysis of aerial survey as of 27th March 2019 - Morning

MA028 v09



Map shows data collected from multi-agency aerial assessments to:

- Prioritise tasking for critical incidents
- Estimate overall severity
- Estimate geographical distribution
- Assess and geolocate points of interest

Grid Severity scale

- Critical
- Severe
- Serious
- Of concern
- No / Minor

Road Status: 24th

- Road: Open
- Road: Restricted access
- Road: Impassable
- Railway: Open

Estimated Population

- More than 5,000
- 1,001 to 5,000
- 101 to 1,000
- Less than 100
- None

Roads

- Primary road
- Secondary road
- Tertiary road

Cyclone Idai

- Cyclone path
- Flood extent (20th March)
- Rivers
- Water bodies

Survey Grids

- Not Tasked Yet
- Completed, IFRC / UNDAC

Aerial survey conducted by: INGC, IFRC, UNDAC, MSF, DFID, Save the children

Base data sources: GADM, OpenStreetMap, WFP, UNOSAT, GDACS
Map created by MapAction (27/03/2019)