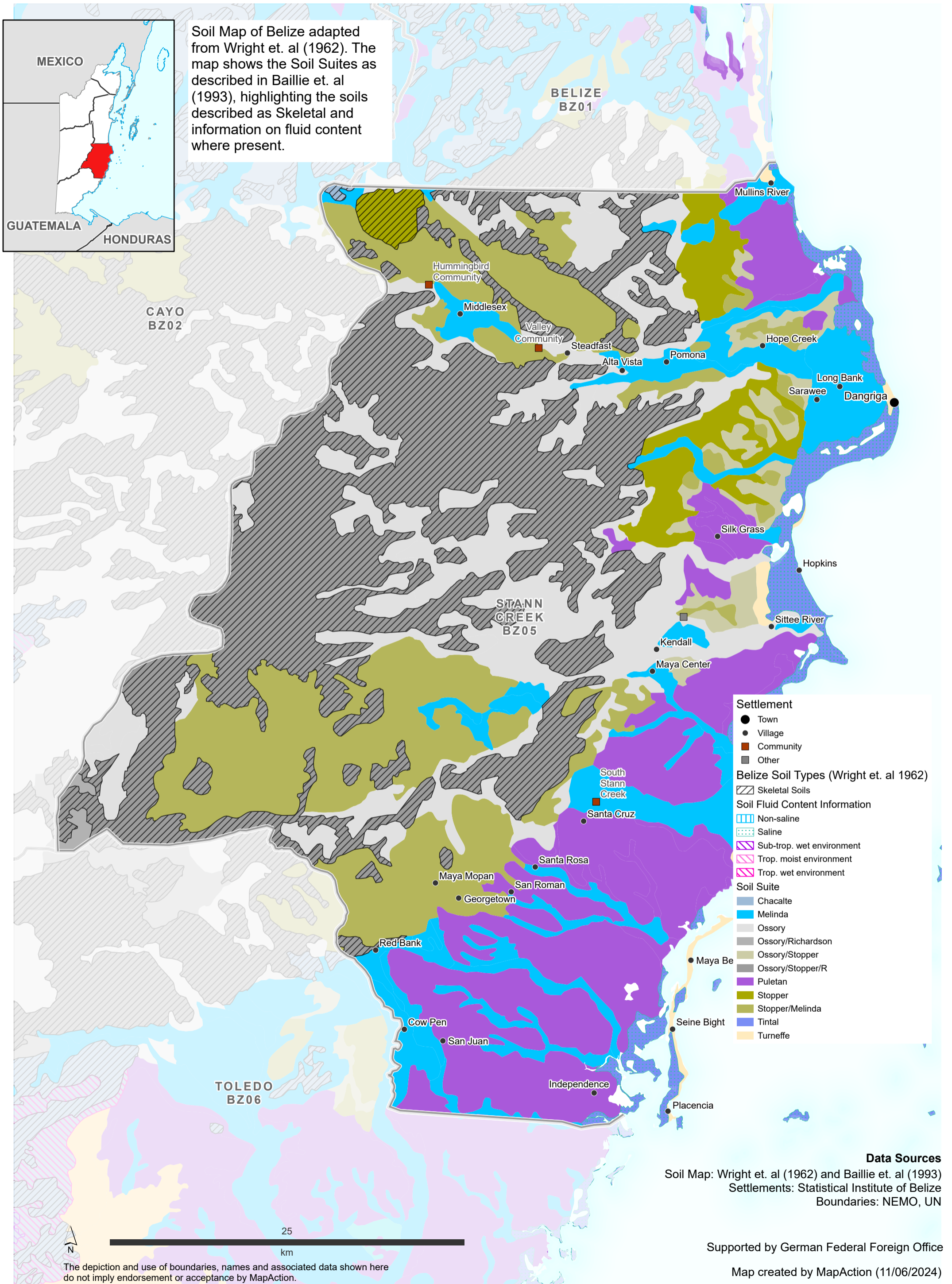


Soil Map (Wright et. al 1962): Stann Creek (BZ05)



Soil Map of Belize adapted from Wright et. al (1962). The map shows the Soil Suites as described in Baillie et. al (1993), highlighting the soils described as Skeletal and information on fluid content where present.



- Settlement**
- Town
- Village
- Community
- Other
- Belize Soil Types (Wright et. al 1962)**
- ▨ Skeletal Soils
- Soil Fluid Content Information**
- ▨ Non-saline
- ▨ Saline
- ▨ Sub-trop. wet environment
- ▨ Trop. moist environment
- ▨ Trop. wet environment
- Soil Suite**
- ▨ Chacalte
- ▨ Melinda
- ▨ Ossory
- ▨ Ossory/Richardson
- ▨ Ossory/Stopper
- ▨ Ossory/Stopper/R
- ▨ Puletan
- ▨ Stopper
- ▨ Stopper/Melinda
- ▨ Tintal
- ▨ Turneffe

Data Sources
 Soil Map: Wright et. al (1962) and Baillie et. al (1993)
 Settlements: Statistical Institute of Belize
 Boundaries: NEMO, UN

Supported by German Federal Foreign Office
 Map created by MapAction (11/06/2024)

25 km
 The depiction and use of boundaries, names and associated data shown here do not imply endorsement or acceptance by MapAction.