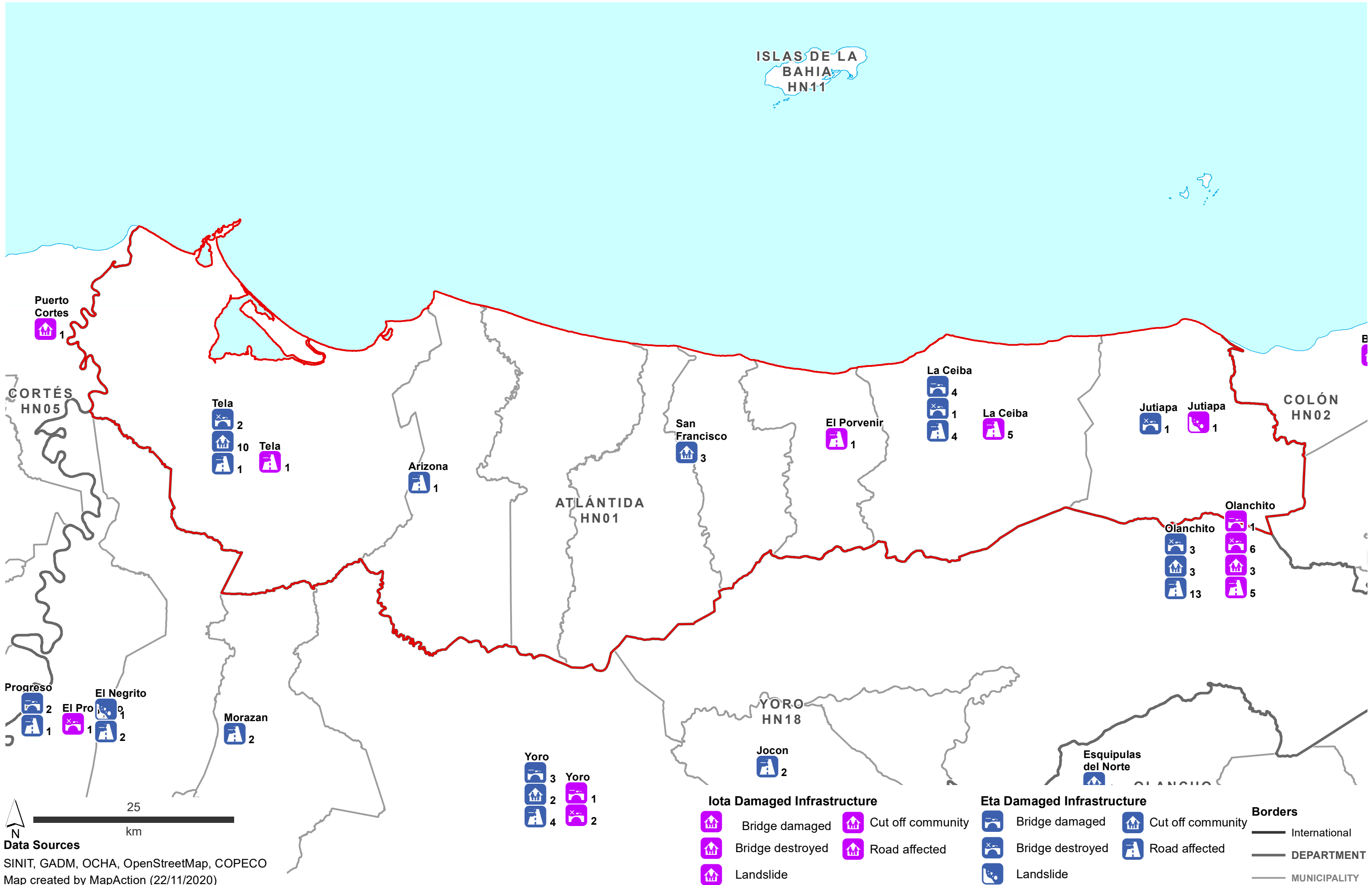
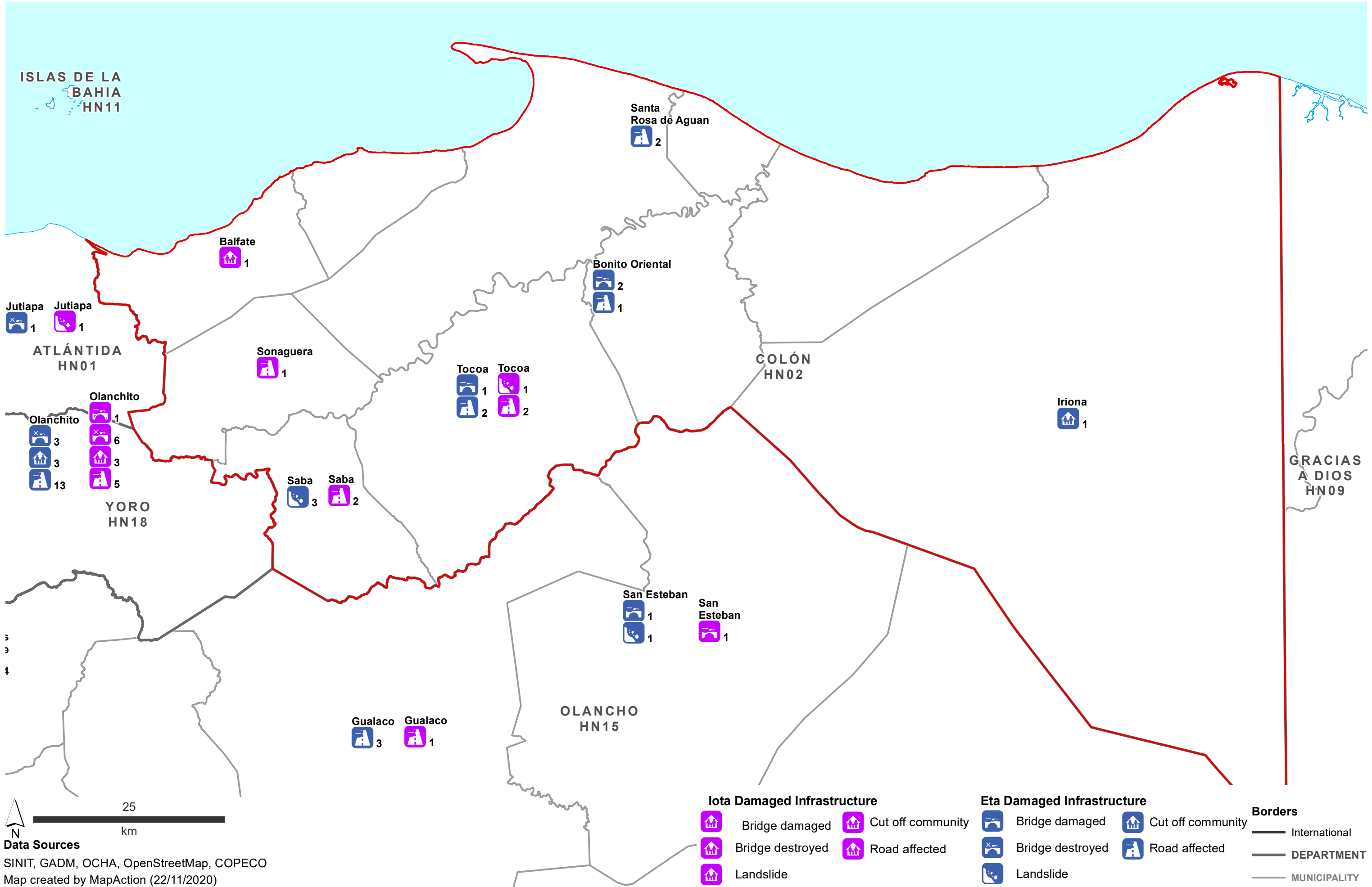


Damaged Infrastructure in each Municipality - Department: Atlántida (as at 16:00 21st Nov 2020)

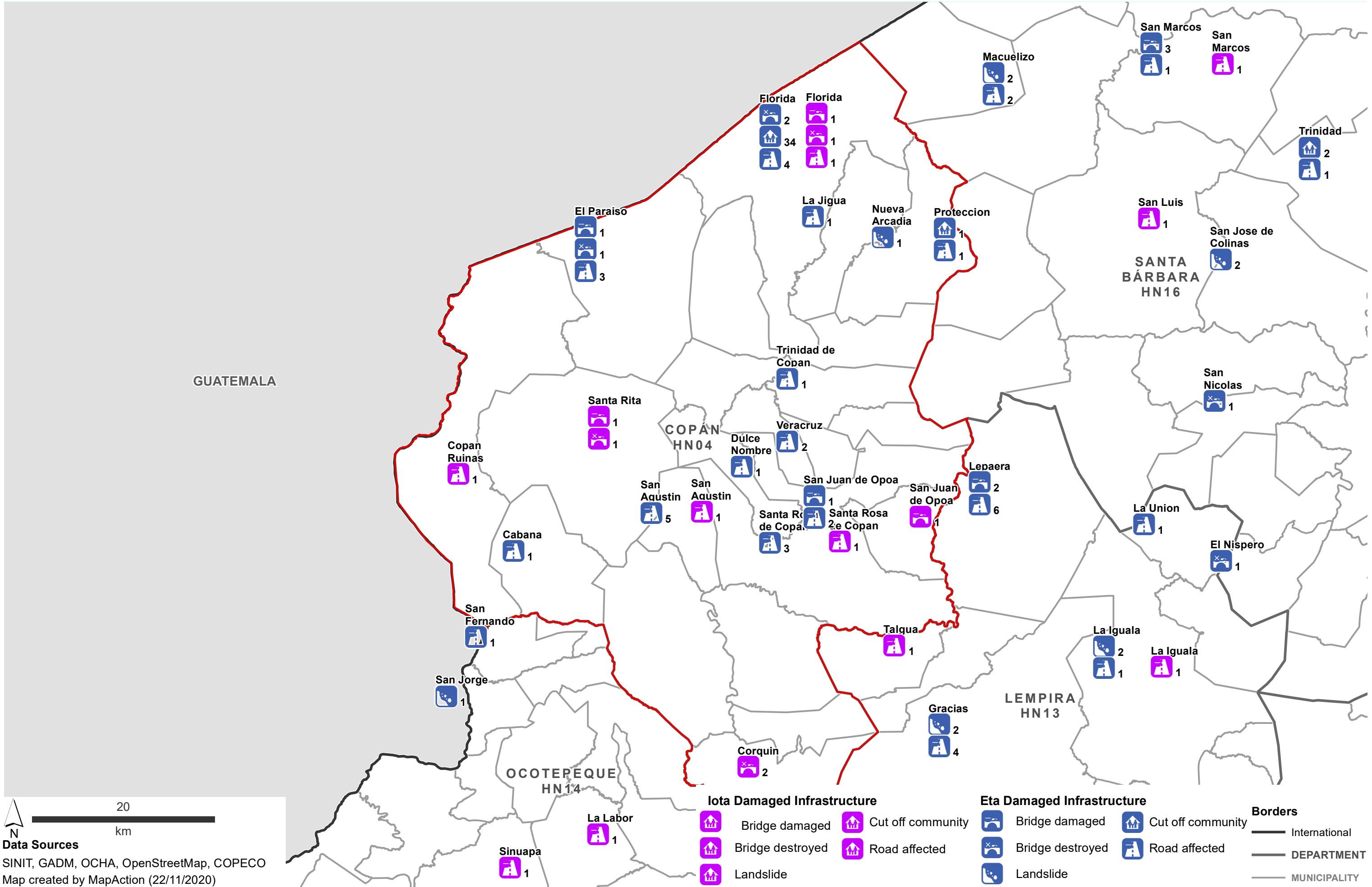


Data Sources
 SINIT, GADM, OCHA, OpenStreetMap, COPECO
 Map created by MapAction (22/11/2020)

Damaged Infrastructure in each Municipality - Department: Colón (as at 16:00 21st Nov 2020)



Damaged Infrastructure in each Municipality - Department: Copán (as at 16:00 21st Nov 2020)



20 km

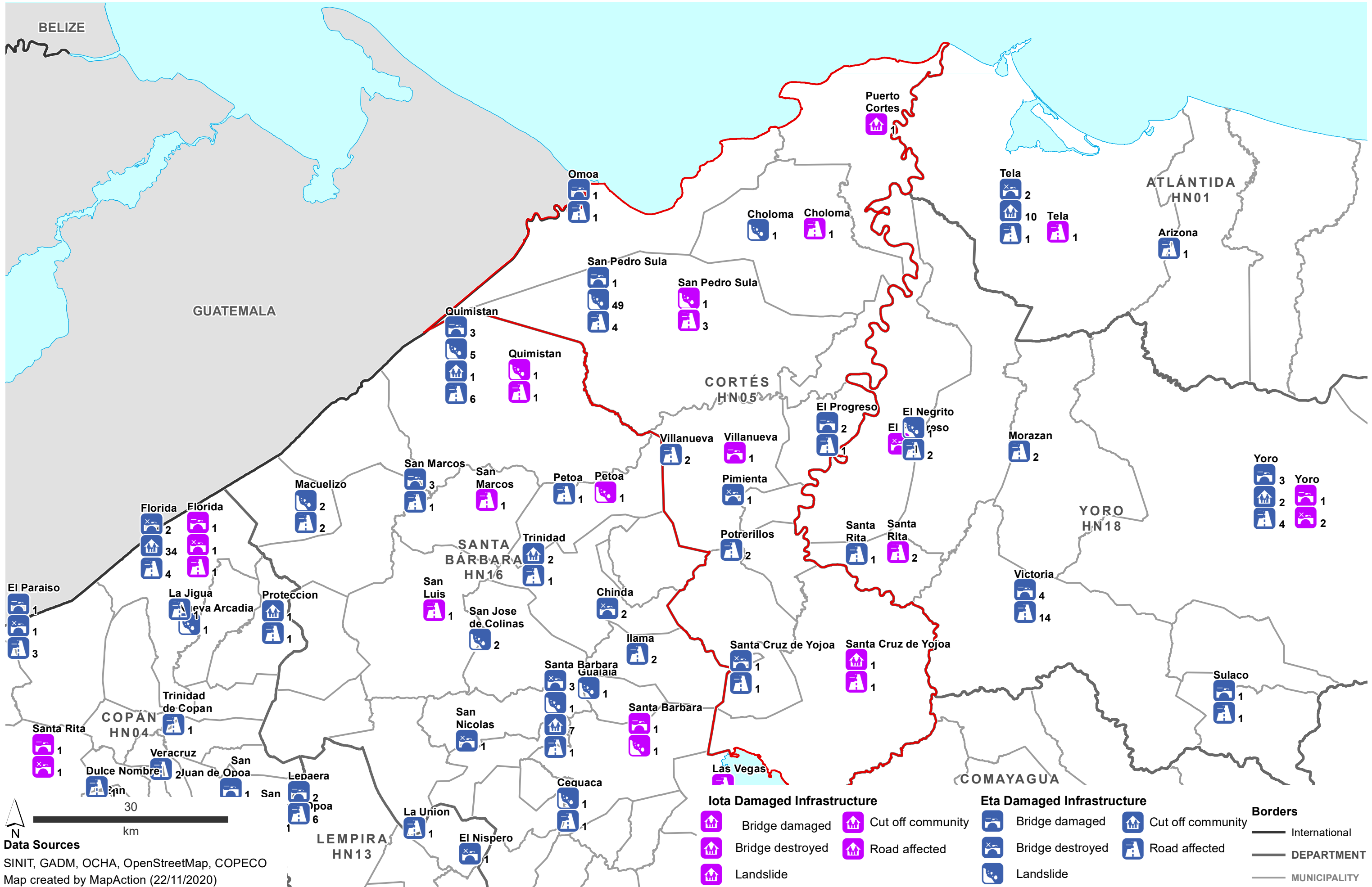
Data Sources

 SINIT, GADM, OCHA, OpenStreetMap, COPECO

 Map created by MapAction (22/11/2020)

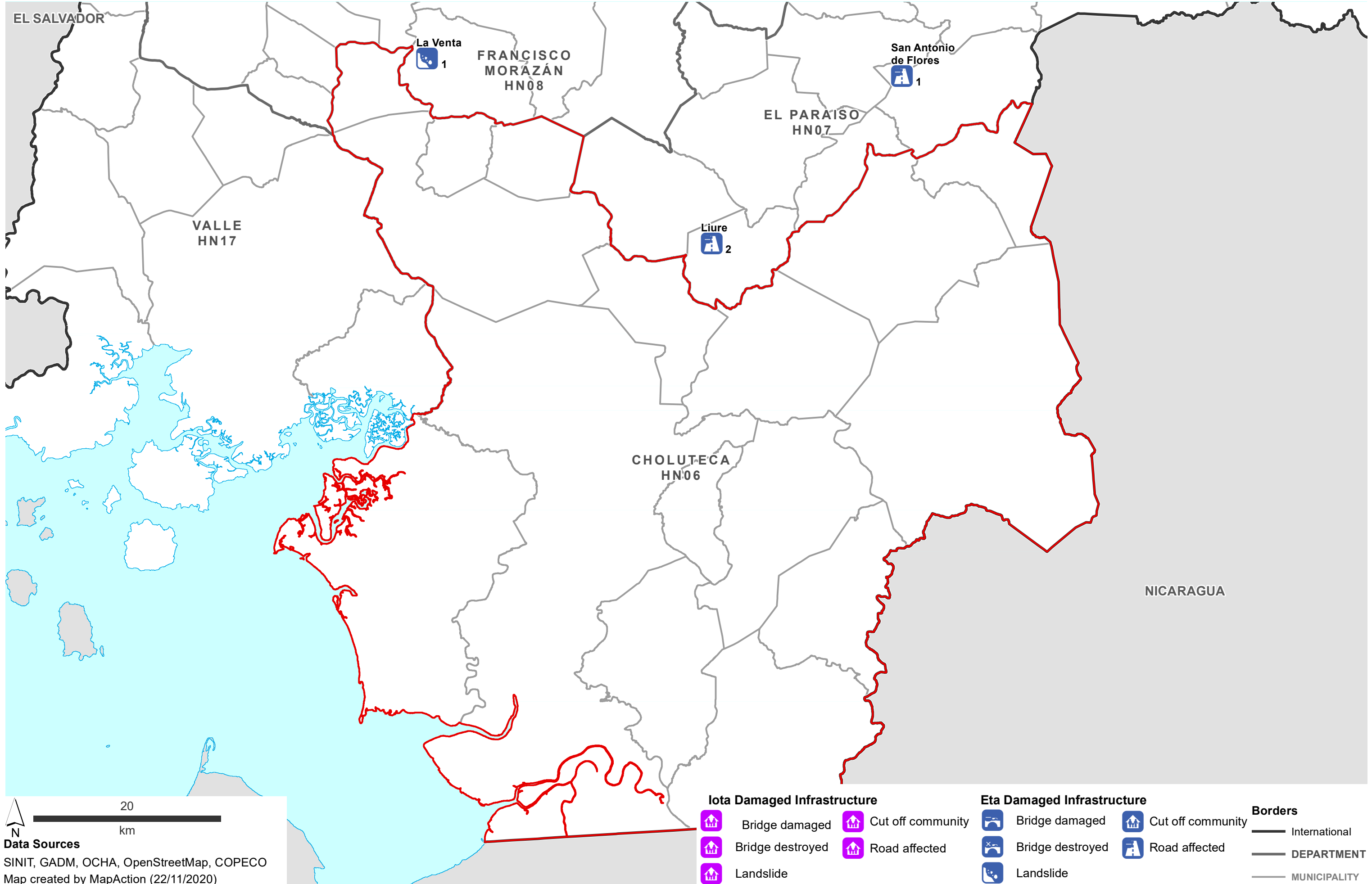
Iota Damaged Infrastructure		Eta Damaged Infrastructure		Borders
Bridge damaged	Bridge destroyed	Bridge damaged	Bridge destroyed	International
Landslide	Road affected	Bridge damaged	Road affected	DEPARTMENT
		Landslide		MUNICIPALITY

Damaged Infrastructure in each Municipality - Department: Cortés (as at 16:00 21st Nov 2020)



Municipality	Department	Iota Damaged Infrastructure	Eta Damaged Infrastructure
El Paraiso	COPAN HN04	1 Bridge destroyed, 1 Bridge damaged, 3 Bridge destroyed	0
Florida	COPAN HN04	1 Bridge destroyed, 1 Bridge damaged, 1 Bridge destroyed, 1 Bridge damaged, 4 Bridge destroyed	0
La Jigua	COPAN HN04	1 Bridge destroyed, 1 Bridge damaged	0
Proteccion	COPAN HN04	1 Bridge destroyed, 1 Bridge damaged	0
Santa Rita	COPAN HN04	1 Bridge destroyed, 1 Bridge damaged	0
Dulce Nombre	COPAN HN04	1 Bridge destroyed, 1 Bridge damaged	0
Veracruz	COPAN HN04	1 Bridge destroyed, 1 Bridge damaged	0
San Juan de Opoa	COPAN HN04	1 Bridge destroyed, 1 Bridge damaged	0
Lepaera	COPAN HN04	1 Bridge destroyed, 1 Bridge damaged, 2 Bridge destroyed, 6 Bridge destroyed	0
San Marcos	SANTA BARBARA HN16	1 Bridge destroyed, 1 Bridge damaged, 3 Bridge destroyed, 1 Bridge damaged	0
Macuelizo	SANTA BARBARA HN16	2 Bridge destroyed, 2 Bridge damaged	0
San Marcos	SANTA BARBARA HN16	1 Bridge destroyed, 1 Bridge damaged	0
Petosa	SANTA BARBARA HN16	1 Bridge destroyed, 1 Bridge damaged	0
Trinidad	SANTA BARBARA HN16	2 Bridge destroyed, 1 Bridge damaged	0
San Luis	SANTA BARBARA HN16	1 Bridge destroyed, 1 Bridge damaged	0
San Jose de Colinas	SANTA BARBARA HN16	2 Bridge destroyed, 1 Bridge damaged	0
Chinda	SANTA BARBARA HN16	2 Bridge destroyed, 1 Bridge damaged	0
Ilama	SANTA BARBARA HN16	2 Bridge destroyed, 1 Bridge damaged	0
Santa Barbara Guataia	SANTA BARBARA HN16	3 Bridge destroyed, 1 Bridge damaged, 1 Bridge destroyed, 7 Bridge destroyed, 1 Bridge damaged	0
San Nicolas	SANTA BARBARA HN16	1 Bridge destroyed, 1 Bridge damaged	0
Santa Barbara	SANTA BARBARA HN16	1 Bridge destroyed, 1 Bridge damaged	0
Ceguaca	SANTA BARBARA HN16	1 Bridge destroyed, 1 Bridge damaged	0
La Union	SANTA BARBARA HN16	1 Bridge destroyed, 1 Bridge damaged	0
El Nispero	SANTA BARBARA HN16	1 Bridge destroyed, 1 Bridge damaged	0
Omoa	CORTÉS HN05	1 Bridge destroyed, 1 Bridge damaged	0
San Pedro Sula	CORTÉS HN05	1 Bridge destroyed, 49 Bridge destroyed, 4 Bridge destroyed	0
San Pedro Sula	CORTÉS HN05	1 Bridge destroyed, 3 Bridge destroyed	0
Choloma	CORTÉS HN05	1 Bridge destroyed, 1 Bridge damaged	0
Choloma	CORTÉS HN05	1 Bridge destroyed, 1 Bridge damaged	0
Puerto Cortes	CORTÉS HN05	1 Bridge destroyed, 1 Bridge damaged	0
Tela	CORTÉS HN05	2 Bridge destroyed, 10 Bridge destroyed, 1 Bridge damaged, 1 Bridge destroyed	0
Arizona	ATLÁNTIDA HN01	1 Bridge destroyed, 1 Bridge damaged	0
Yoro	YORO HN18	3 Bridge destroyed, 2 Bridge damaged, 4 Bridge destroyed	1 Bridge destroyed, 2 Bridge damaged
Morazan	YORO HN18	2 Bridge destroyed, 2 Bridge damaged	0
El Progreso	YORO HN18	2 Bridge destroyed, 1 Bridge damaged	0
El Negrito	YORO HN18	1 Bridge destroyed, 2 Bridge damaged	0
Santa Rita	YORO HN18	1 Bridge destroyed, 1 Bridge damaged	0
Santa Rita	YORO HN18	1 Bridge destroyed, 2 Bridge damaged	0
Victoria	YORO HN18	4 Bridge destroyed, 14 Bridge destroyed	0
Sulaco	YORO HN18	1 Bridge destroyed, 1 Bridge damaged	0
Santa Cruz de Yojoa	COMAYAGUA	1 Bridge destroyed, 1 Bridge damaged	0
Santa Cruz de Yojoa	COMAYAGUA	1 Bridge destroyed, 1 Bridge damaged	0
Las Vegas	COMAYAGUA	1 Bridge destroyed, 1 Bridge damaged	0

Damaged Infrastructure in each Municipality - Department: Choluteca (as at 16:00 21st Nov 2020)



20 km

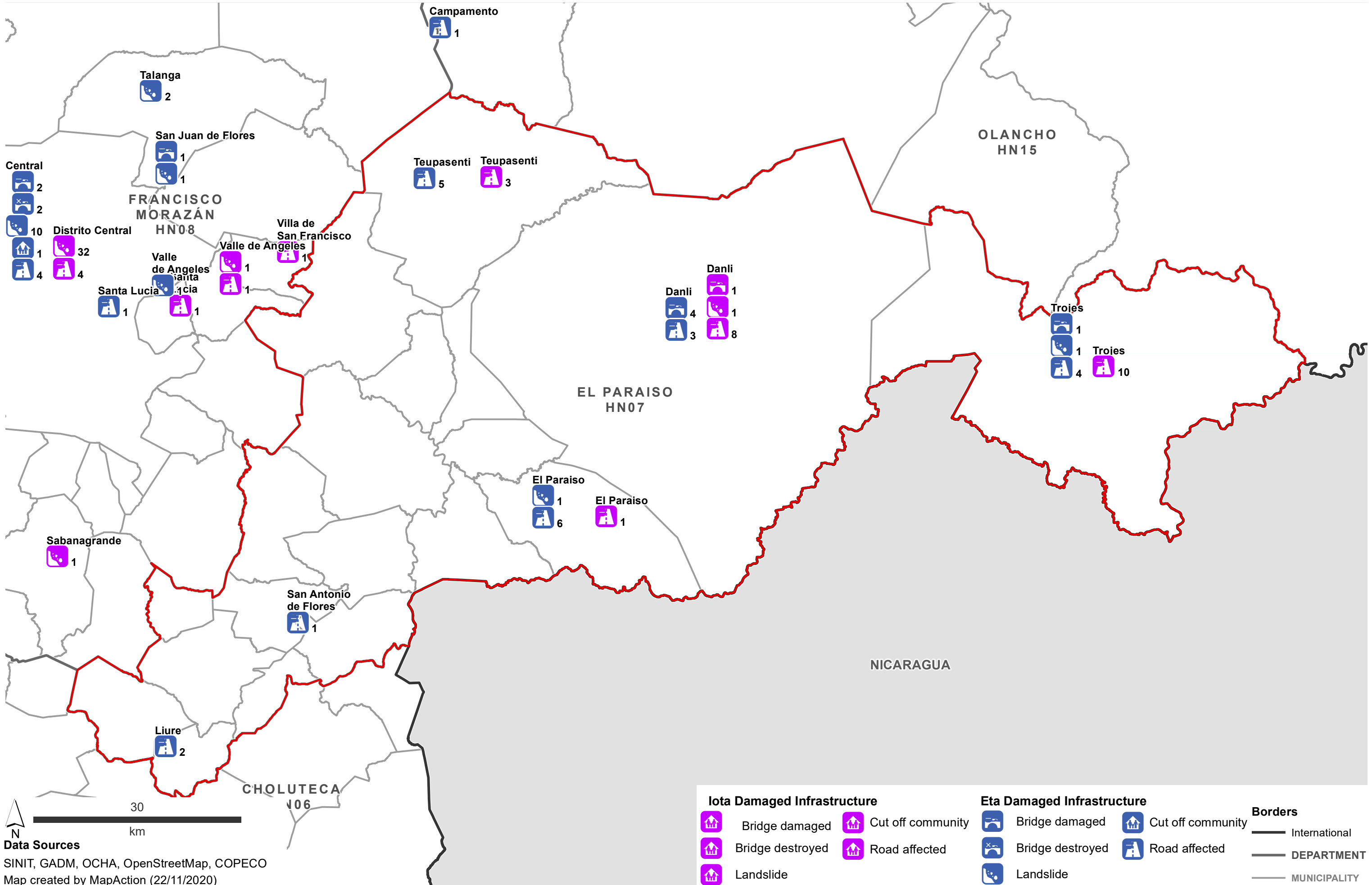
Data Sources

 SINIT, GADM, OCHA, OpenStreetMap, COPECO

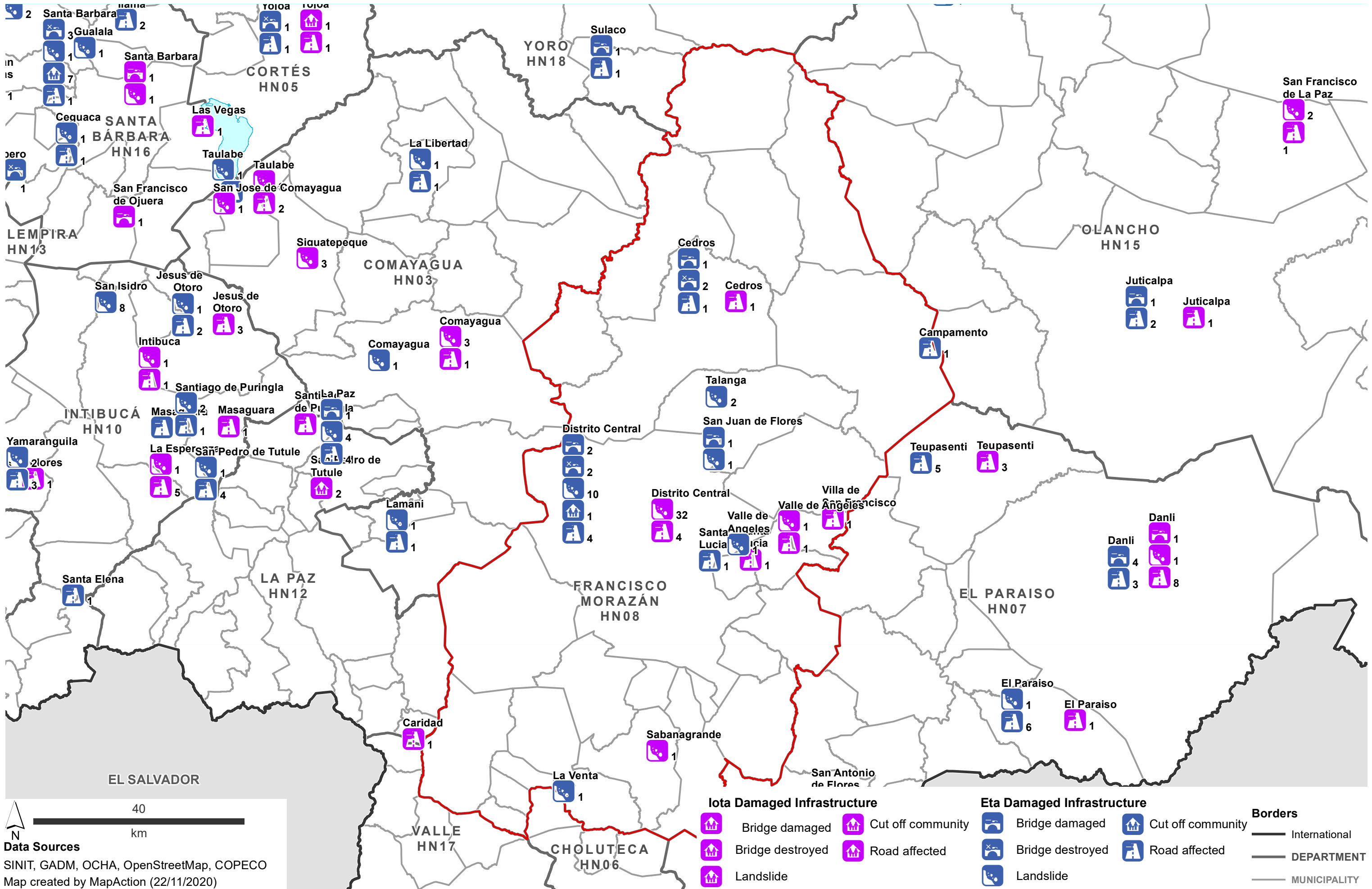
 Map created by MapAction (22/11/2020)

Iota Damaged Infrastructure		Eta Damaged Infrastructure		Borders	
	Bridge damaged		Bridge damaged		International
	Bridge destroyed		Bridge destroyed		DEPARTMENT
	Landslide		Landslide		MUNICIPALITY
	Cut off community		Cut off community		
	Road affected		Road affected		

Damaged Infrastructure in each Municipality - Department: El Paraiso (as at 16:00 21st Nov 2020)



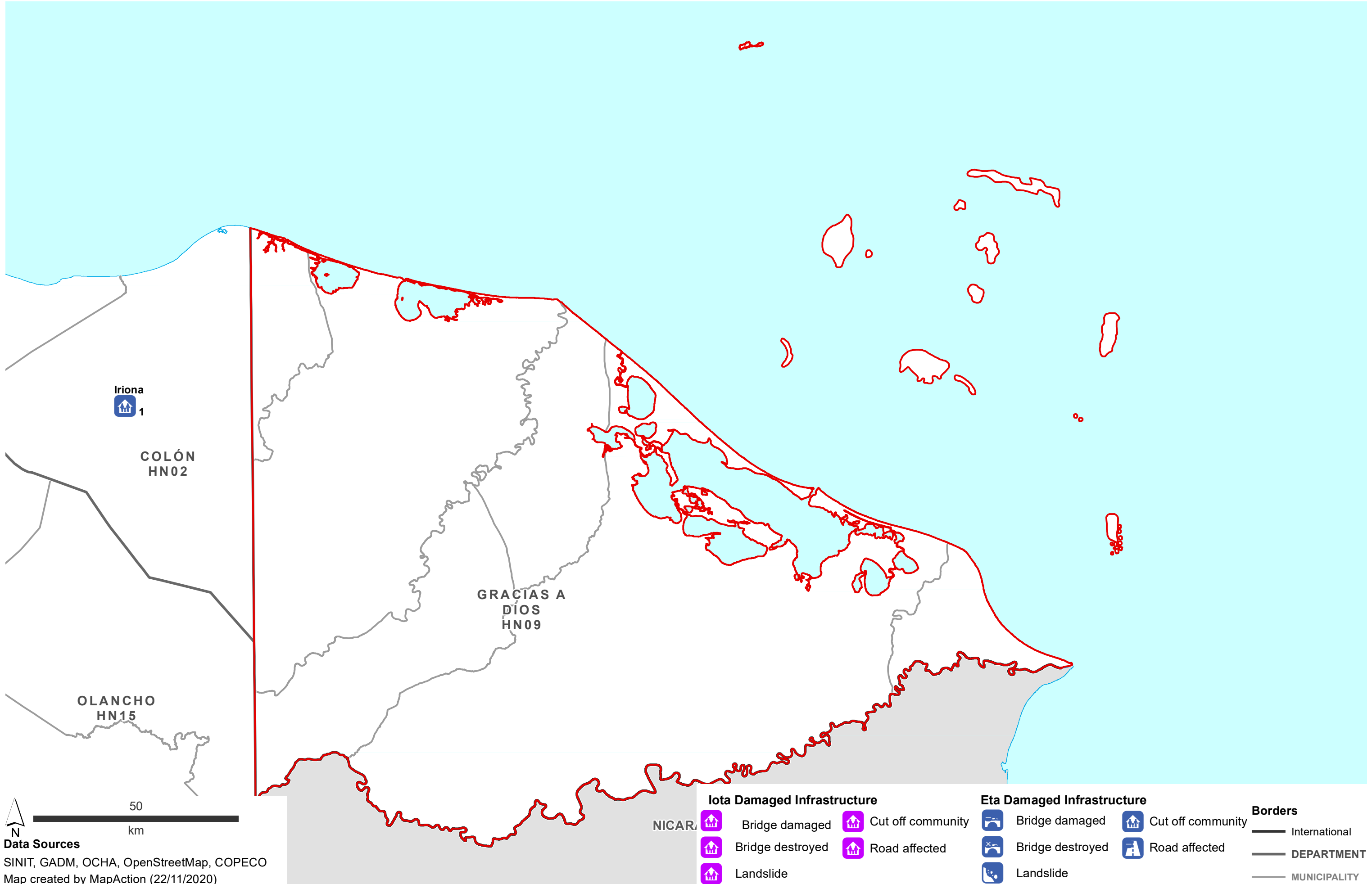
Damaged Infrastructure in each Municipality - Department: Francisco Morazán (as at 16:00 21st Nov)



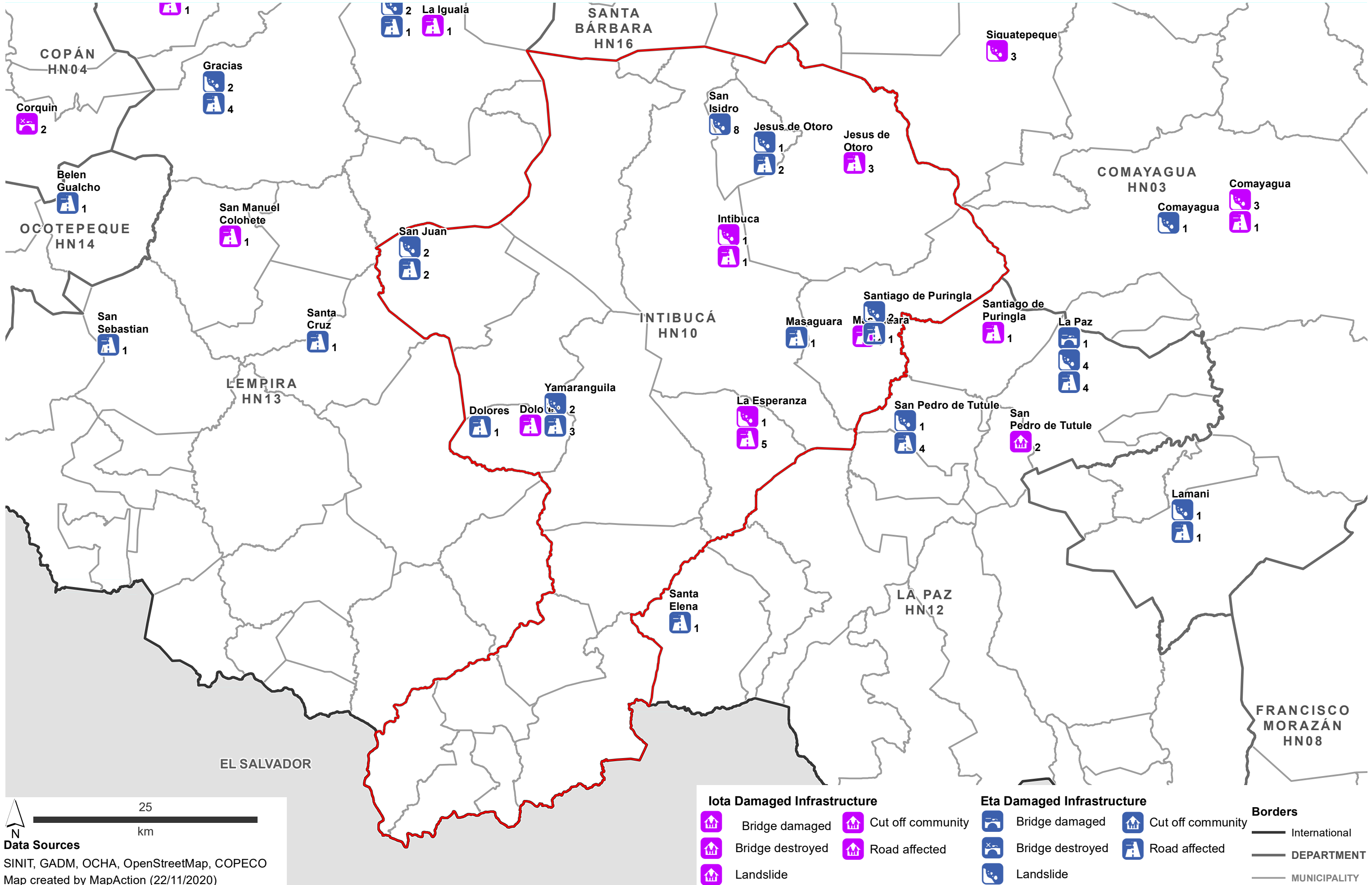
40 km

Data Sources
 SINIT, GADM, OCHA, OpenStreetMap, COPECO
 Map created by MapAction (22/11/2020)

Damaged Infrastructure in each Municipality - Department: Gracias a Dios (as at 16:00 21st Nov 2020)



Damaged Infrastructure in each Municipality - Department: Intibucá (as at 16:00 21st Nov 2020)



25 km

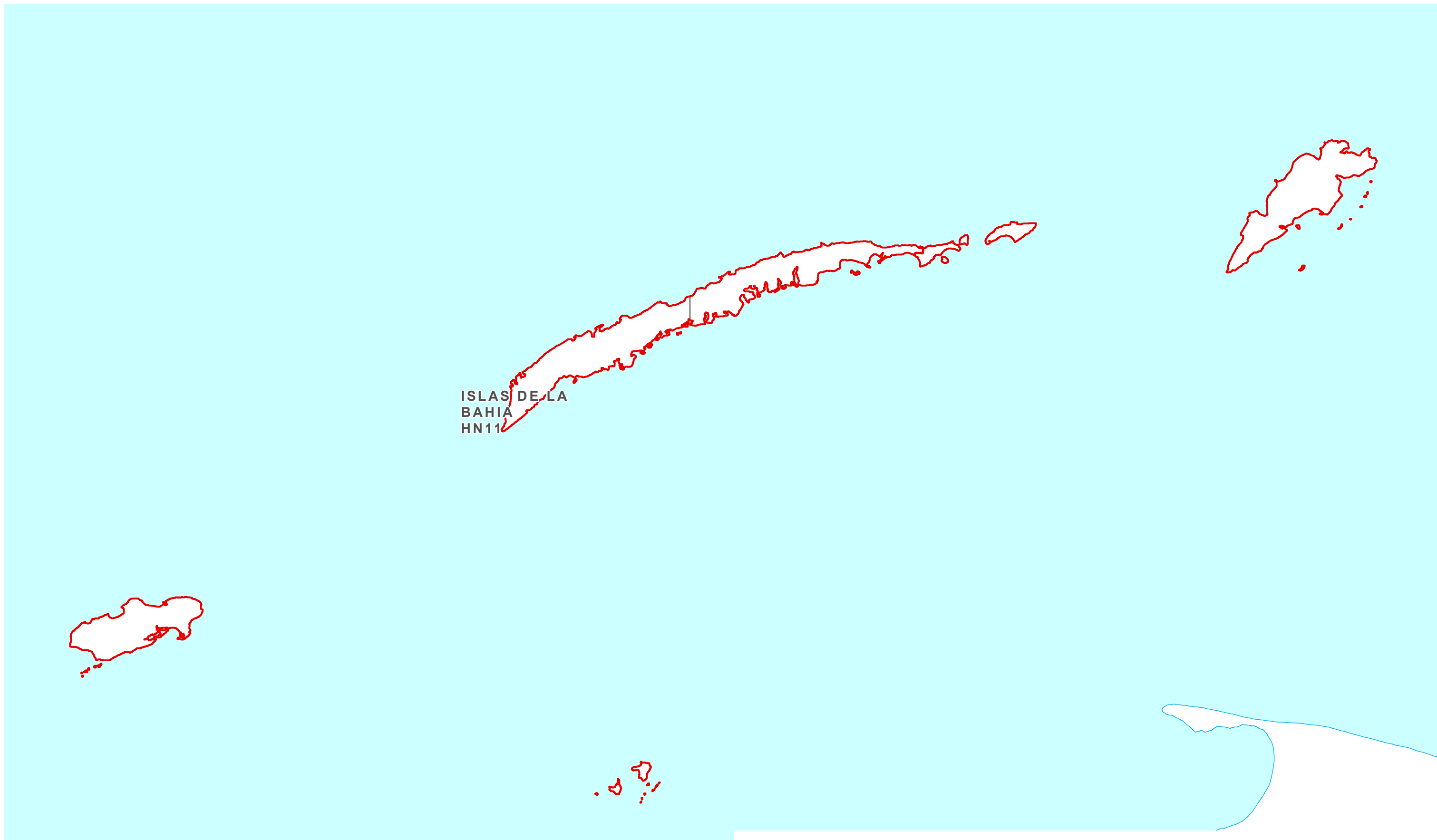
Data Sources

 SINIT, GADM, OCHA, OpenStreetMap, COPECO

 Map created by MapAction (22/11/2020)

Iota Damaged Infrastructure		Eta Damaged Infrastructure		Borders
Bridge damaged	Cut off community	Bridge damaged	Cut off community	International
Bridge destroyed	Road affected	Bridge destroyed	Road affected	DEPARTMENT
Landslide		Landslide		MUNICIPALITY

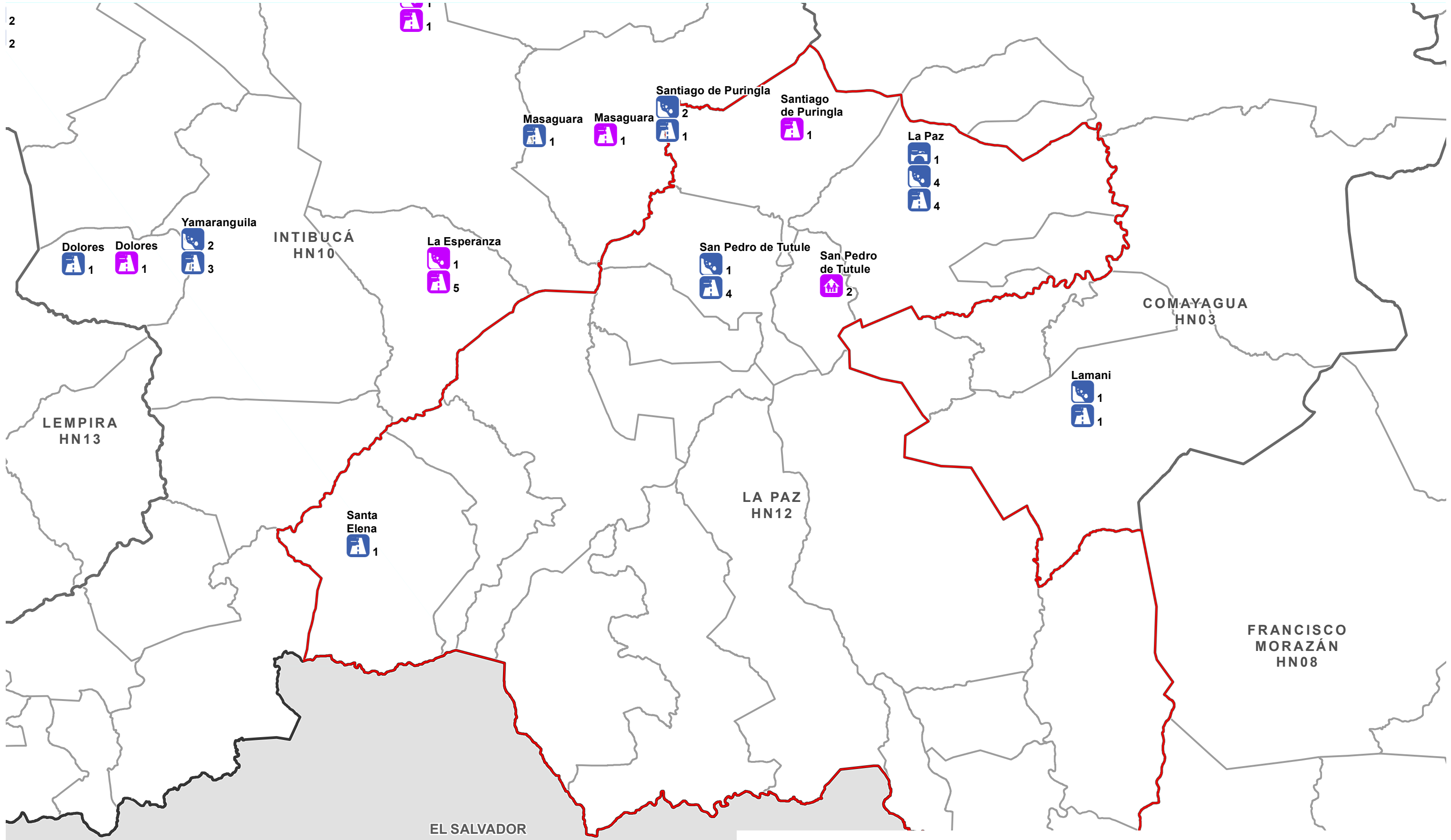
Damaged Infrastructure in each Municipality - Department: Islas de La Bahia (as at 16:00 21st Nov)



Data Sources
 SINIT, GADM, OCHA, OpenStreetMap, COPECO
 Map created by MapAction (22/11/2020)

Iota Damaged Infrastructure		Eta Damaged Infrastructure		Borders	
	Bridge damaged		Bridge damaged		International
	Bridge destroyed		Bridge destroyed		DEPARTMENT
	Landslide		Landslide		MUNICIPALITY
	Cut off community		Cut off community		
	Road affected		Road affected		

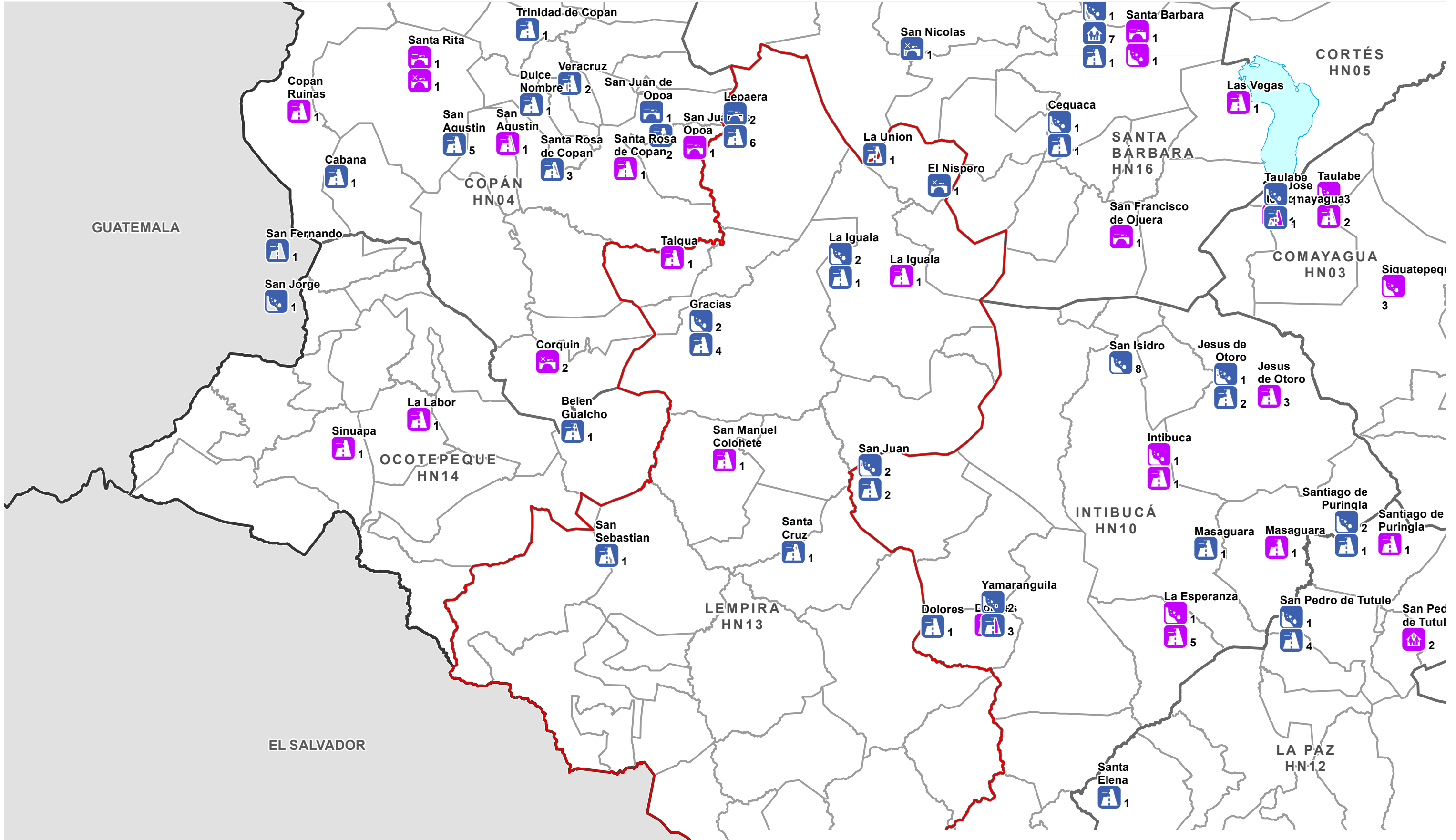
Damaged Infrastructure in each Municipality - Department: La Paz (as at 16:00 21st Nov 2020)



10 km
Data Sources
 SINIT, GADM, OCHA, OpenStreetMap, COPECO
 Map created by MapAction (22/11/2020)

Iota Damaged Infrastructure		Eta Damaged Infrastructure		Borders	
	Bridge damaged		Bridge damaged		International
	Bridge destroyed		Bridge destroyed		DEPARTMENT
	Landslide		Landslide		MUNICIPALITY
	Cut off community		Cut off community		
	Road affected		Road affected		

Damaged Infrastructure in each Municipality - Department: Lempira (as at 16:00 21st Nov 2020)



30 km

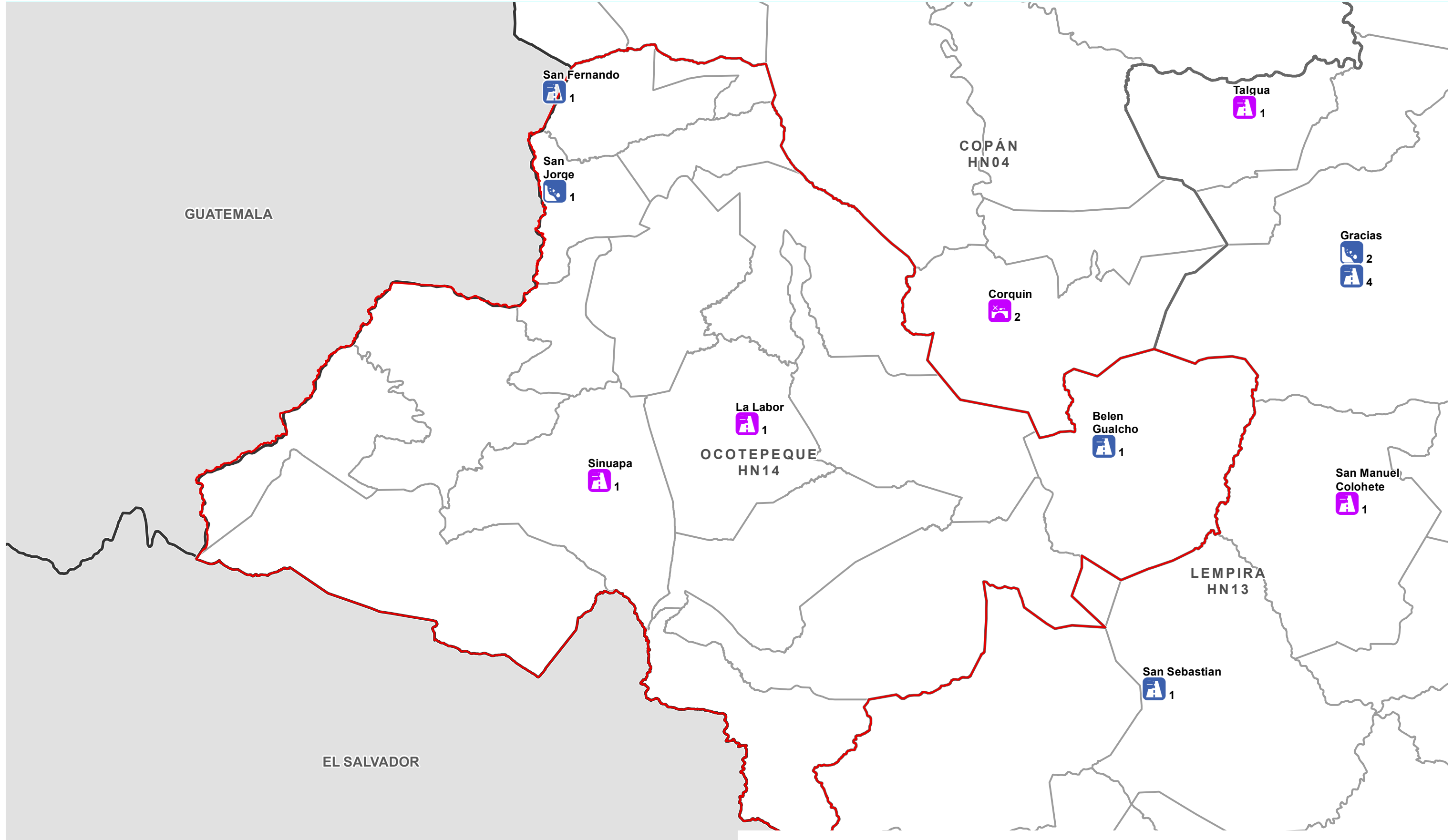
Data Sources

 SINIT, GADM, OCHA, OpenStreetMap, COPECO

 Map created by MapAction (22/11/2020)

Iota Damaged Infrastructure		Eta Damaged Infrastructure		Borders
	Bridge damaged		Bridge damaged	
	Bridge destroyed		Bridge destroyed	
	Landslide		Landslide	
	Cut off community		Cut off community	
	Road affected		Road affected	

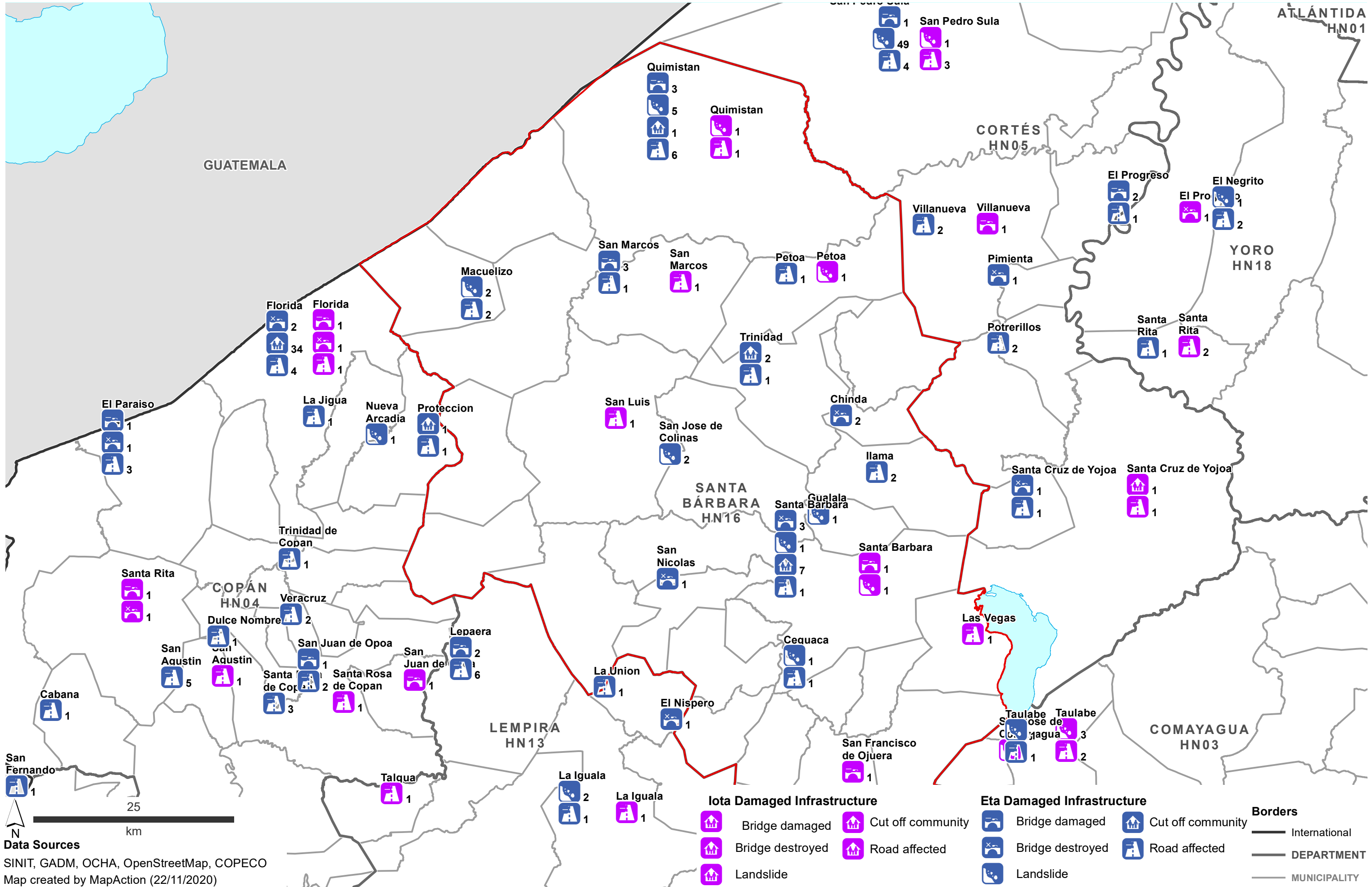
Damaged Infrastructure in each Municipality - Department: Ocotepeque (as at 16:00 21st Nov 2020)



Data Sources
 SINIT, GADM, OCHA, OpenStreetMap, COPECO
 Map created by MapAction (22/11/2020)

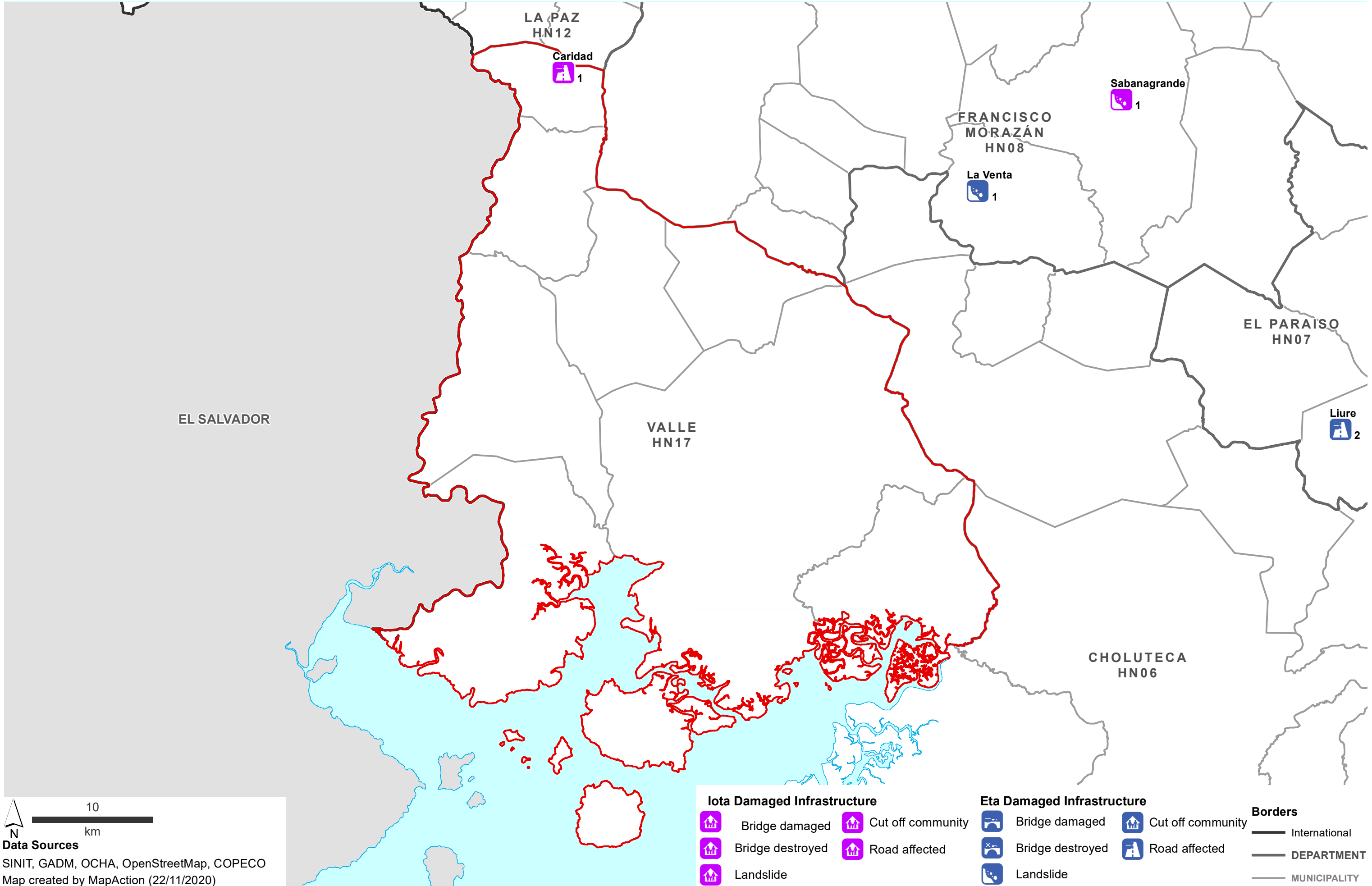
Iota Damaged Infrastructure		Eta Damaged Infrastructure		Borders	
	Bridge damaged		Bridge damaged		International
	Bridge destroyed		Bridge destroyed		DEPARTMENT
	Landslide		Landslide		MUNICIPALITY
	Cut off community		Cut off community		
	Road affected		Road affected		

Damaged Infrastructure in each Municipality - Department: Santa Bárbara (as at 16:00 21st Nov 2020)



Data Sources
 SINIT, GADM, OCHA, OpenStreetMap, COPECO
 Map created by MapAction (22/11/2020)

Damaged Infrastructure in each Municipality - Department: Valle (as at 16:00 21st Nov 2020)



Damaged Infrastructure in each Municipality - Department: Yoro (as at 16:00 21st Nov 2020)

