

27°42'N

85°18'E




MapAction


**Nepal earthquake:
City map series**

Central Kathmandu

One of a series of maps showing Kathmandu and surrounding urban areas, based on OpenStreetMap data.

Data sources
Base map: OpenStreetMap
Boundaries: UN OCHA


 Wards



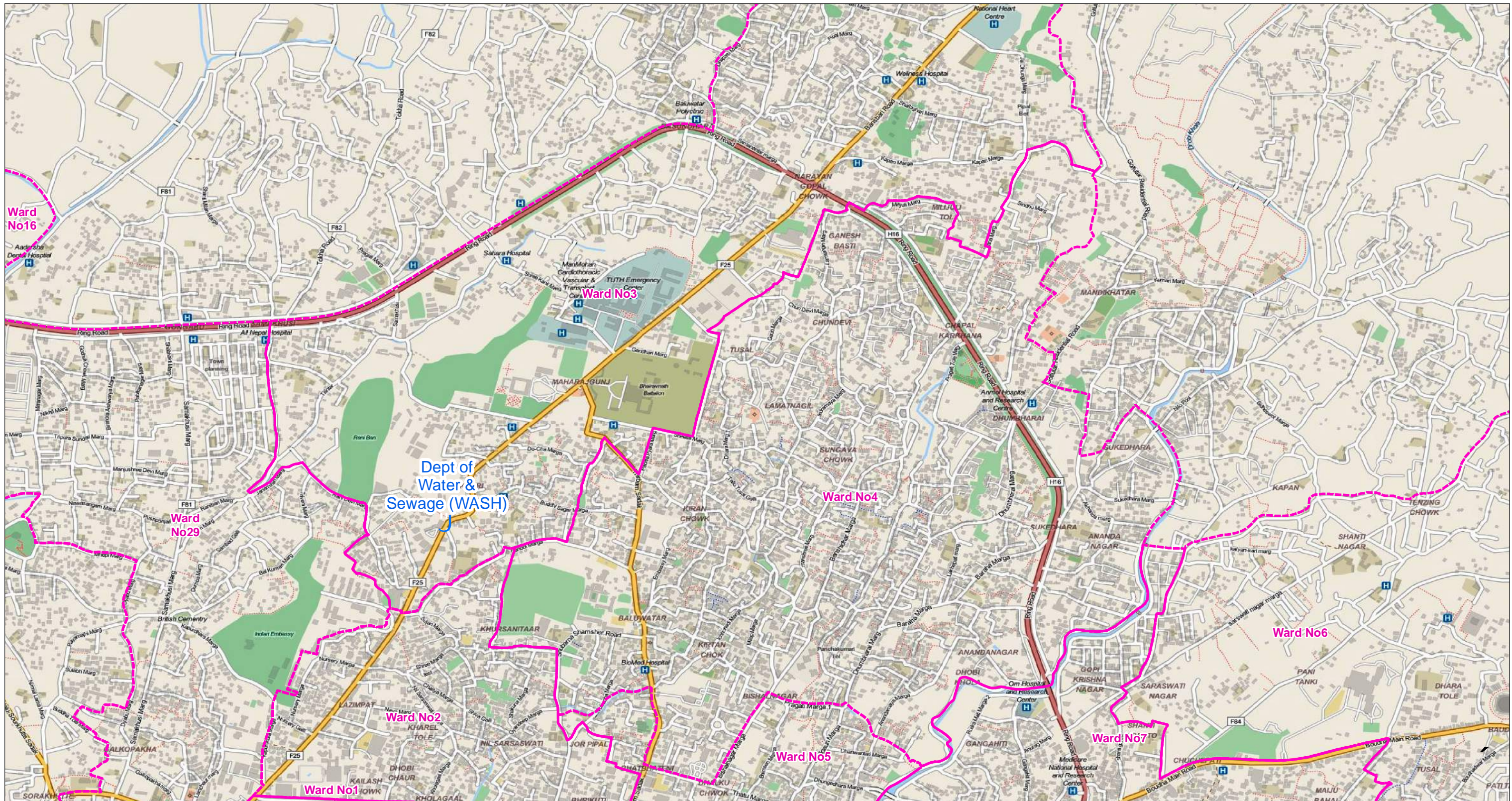

0 0.15 0.3 0.45 0.6
kilometres
1: 20,000 (At A3)

Created 9 May 2015 / 09:00 UTC+ 05:45
Map Document MA129_V01_CityMap_mapbook_A3
Projection / Datum WGS 1984
Glide Number EQ-2015-000048-NPL

Produced by MapAction
nepal@mapaction.org
www.mapaction.org

Supported by 

The depiction and use of boundaries, names and associated data shown here do not imply endorsement or acceptance by MapAction.

MapAction

**Nepal earthquake:
City map series**

Northern Kathmandu

One of a series of maps showing Kathmandu and surrounding urban areas, based on OpenStreetMap data.

Data sources
Base map: OpenStreetMap
Boundaries: UN OCHA

 Wards



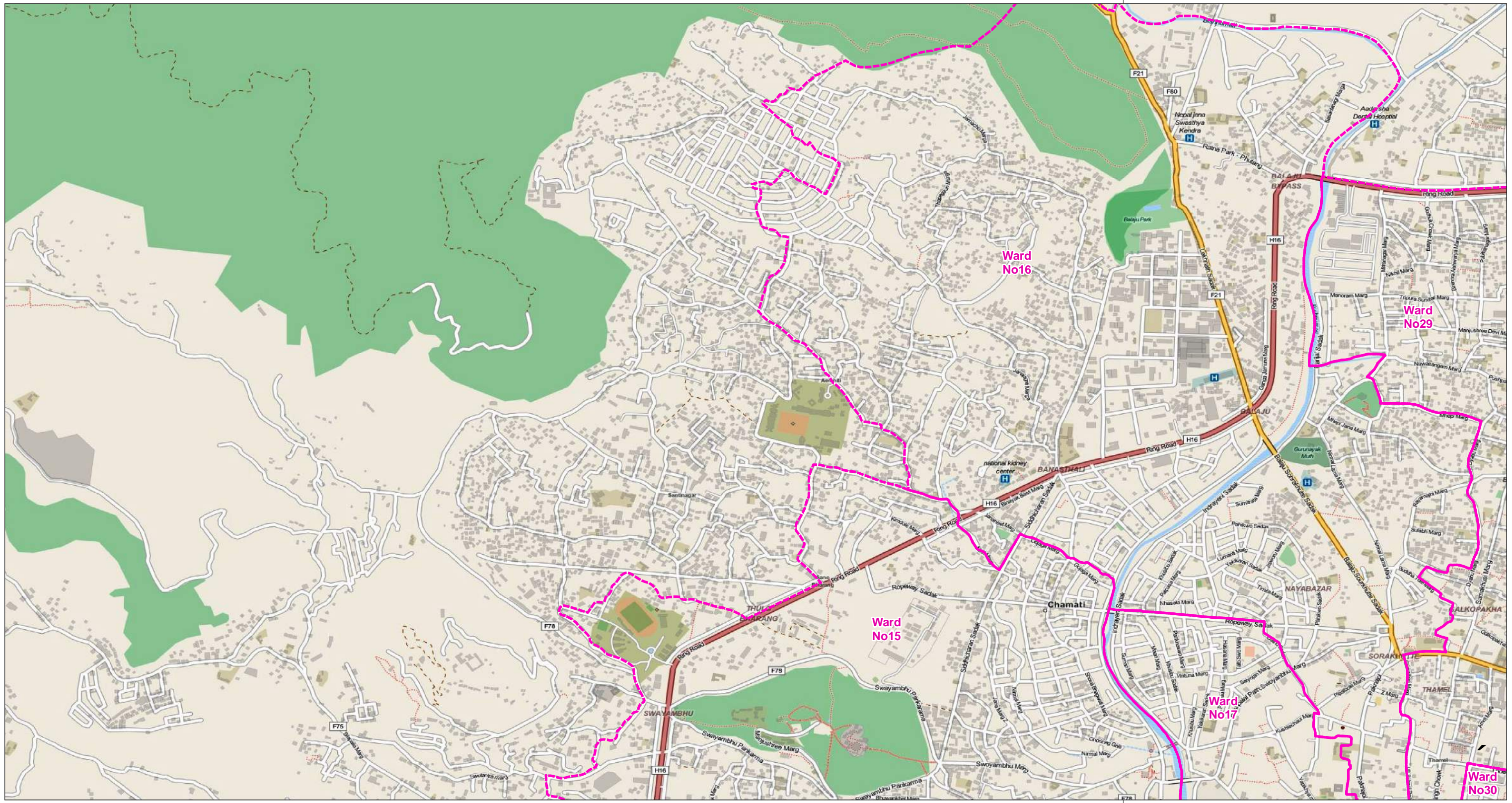
0 0.15 0.3 0.45 0.6
kilometres
1: 20,000 (At A3)

Created 9 May 2015 / 09:00 UTC+ 05:45
Map Document MA129_V01_CityMap_mapbook_A3
Projection / Datum WGS 1984
Glide Number EQ-2015-000048-NPL

Produced by MapAction
nepal@mapaction.org
www.mapaction.org

The depiction and use of boundaries, names and associated data shown here do not imply endorsement or acceptance by MapAction.





85°18'E



MapAction

**Nepal earthquake:
City map series**

Western Kathmandu

One of a series of maps showing Kathmandu and surrounding urban areas, based on OpenStreetMap data.

Data sources
Base map: OpenStreetMap
Boundaries: UN OCHA

 Wards



0 0.15 0.3 0.45 0.6
kilometres

1: 20,000 (At A3)

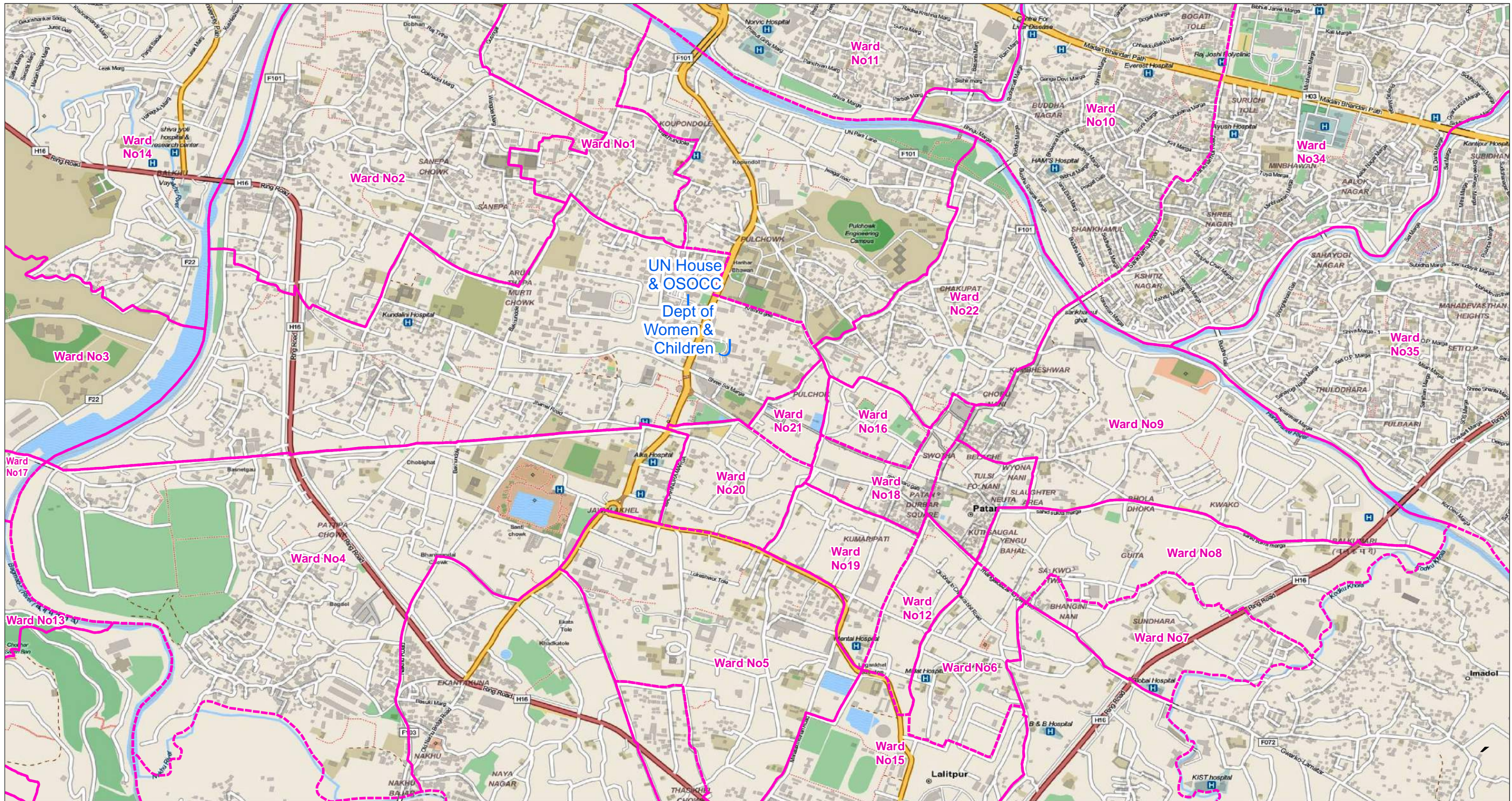
Created 9 May 2015 / 09:00 UTC+ 05:45
Map Document MA129_V01_CityMap_mapbook_A3
Projection / Datum WGS 1984
Glide Number EQ-2015-000048-NPL

Produced by MapAction
nepal@mapaction.org
www.mapaction.org

The depiction and use of boundaries, names and associated data shown here do not imply endorsement or acceptance by MapAction.

Supported by





85°18'E



MapAction

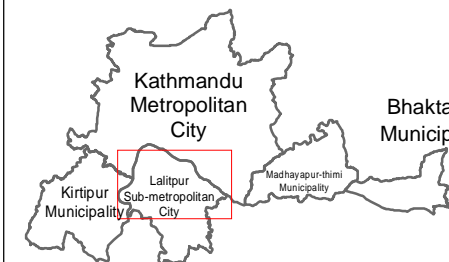
Nepal earthquake:
City map series

Northern Lalitpur

One of a series of maps showing Kathmandu and surrounding urban areas, based on OpenStreetMap data.

Data sources
Base map: OpenStreetMap
Boundaries: UN OCHA

 Wards



0 0.15 0.3 0.45 0.6
kilometres

1: 20,000 (At A3)

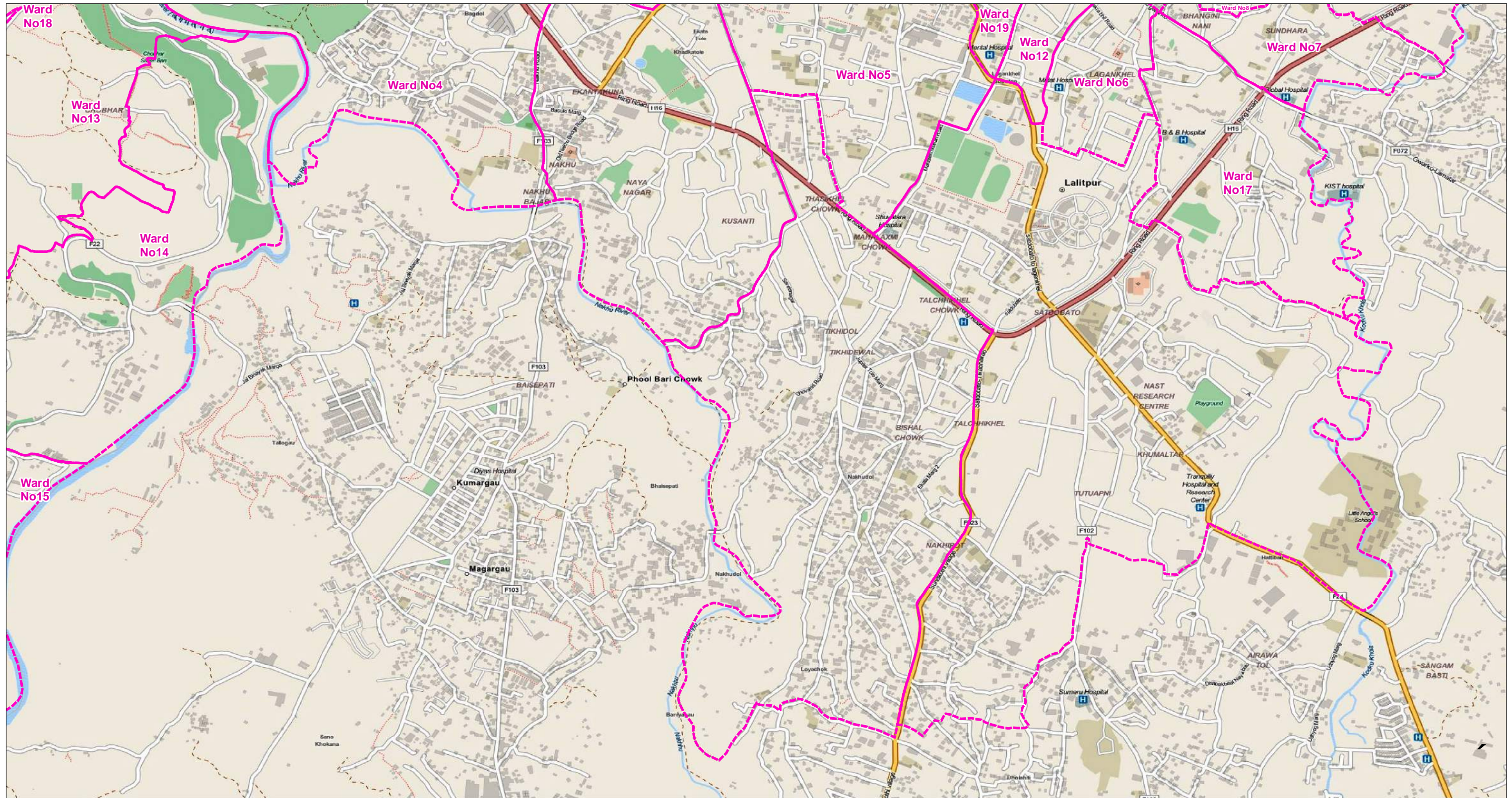
Created 9 May 2015 / 09:00 UTC+ 05:45
Map Document MA129_V01_CityMap_mapbook_A3
Projection / Datum WGS 1984
Glide Number EQ-2015-000048-NPL

Produced by MapAction
nepal@mapaction.org
www.mapaction.org

The depiction and use of boundaries, names and associated data shown here do not imply endorsement or acceptance by MapAction.

Supported by





85°18'E



MapAction

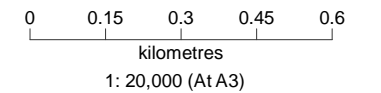
**Nepal earthquake:
City map series**

Southern Lalitpur

One of a series of maps showing Kathmandu and surrounding urban areas, based on OpenStreetMap data.

Data sources
Base map: OpenStreetMap
Boundaries: UN OCHA

 Wards

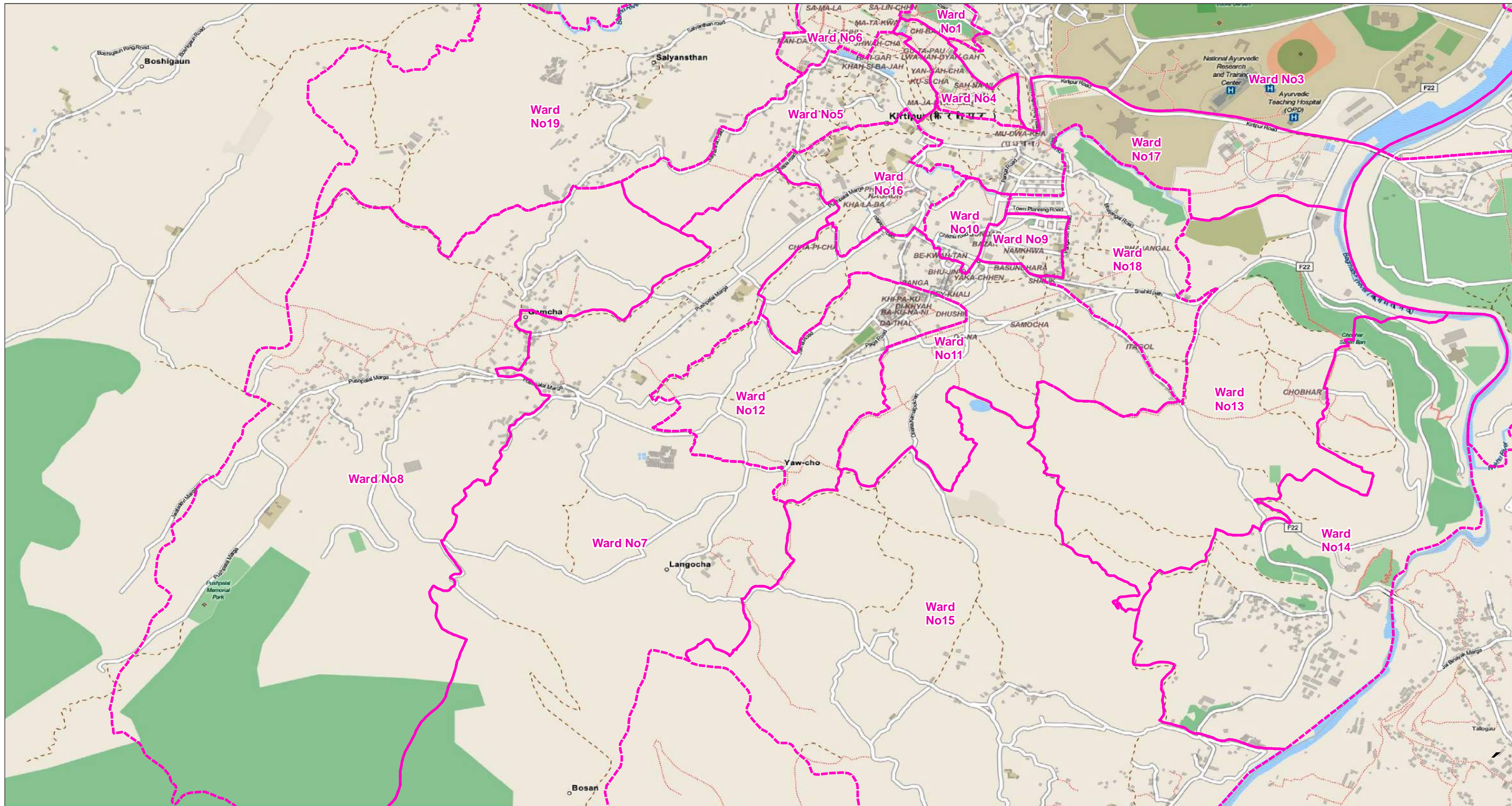


Created 9 May 2015 / 09:00 UTC+ 05:45
Map Document MA129_V01_CityMap_mapbook_A3
Projection / Datum WGS 1984
Glide Number EQ-2015-000048-NPL

Produced by MapAction
nepal@mapaction.org
www.mapaction.org

The depiction and use of boundaries, names and associated data shown here do not imply endorsement or acceptance by MapAction.





MapAction

**Nepal earthquake:
City map series**

Southern Kirtipur

One of a series of maps showing Kathmandu and surrounding urban areas, based on OpenStreetMap data.

Data sources
Base map: OpenStreetMap
Boundaries: UN OCHA

 Wards



0 0.15 0.3 0.45 0.6
kilometres

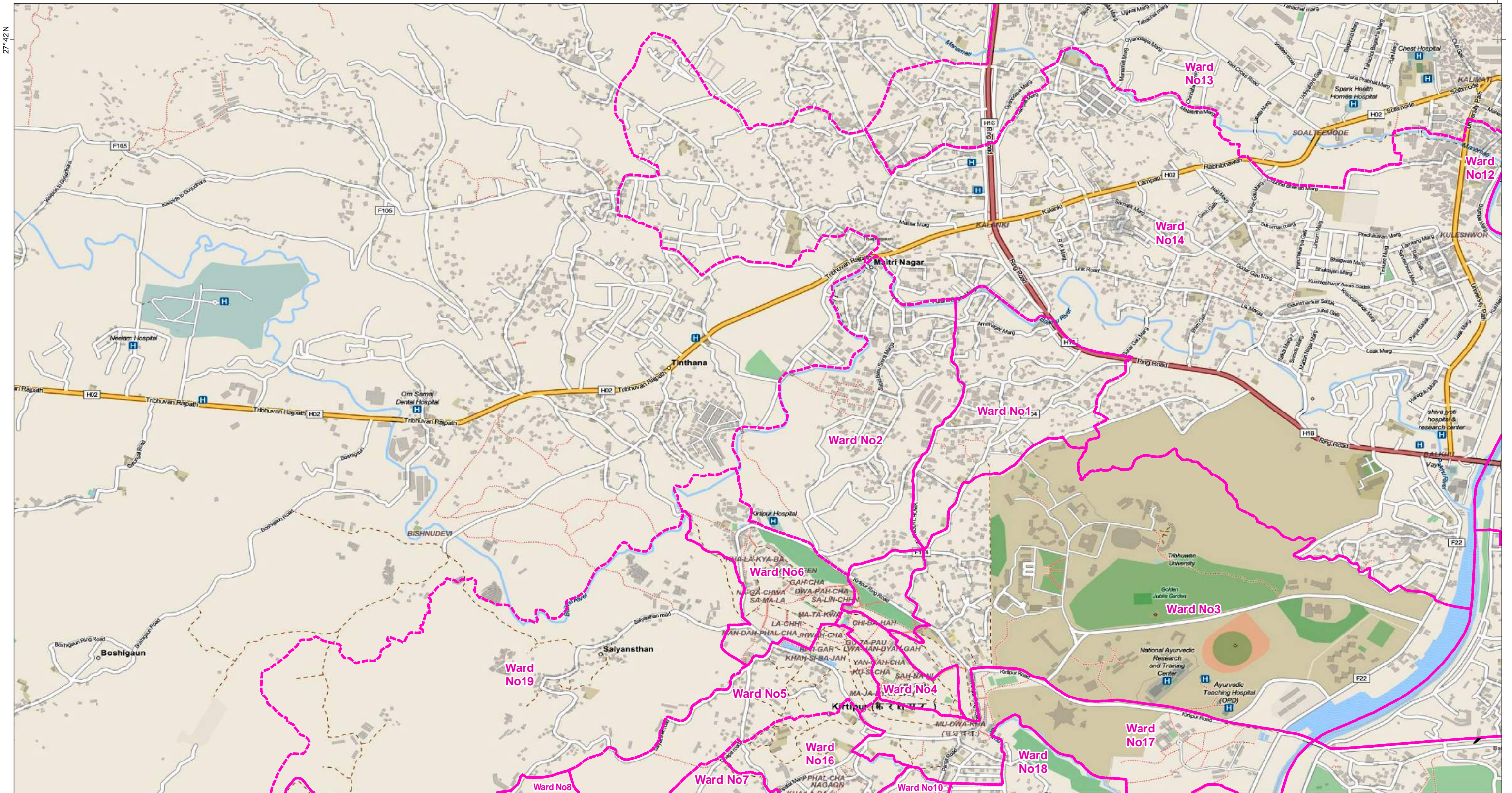
1: 20,000 (At A3)

Created 9 May 2015 / 09:00 UTC+ 05:45
Map Document MA129_V01_CityMap_mapbook_A3
Projection / Datum WGS 1984
Glide Number EQ-2015-000048-NPL

Produced by MapAction
nepal@mapaction.org
www.mapaction.org

The depiction and use of boundaries, names and associated data shown here do not imply endorsement or acceptance by MapAction.






MapAction

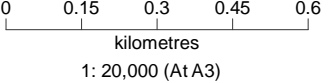
**Nepal earthquake:
City map series**

Northern Kirtipur

One of a series of maps showing Kathmandu and surrounding urban areas, based on OpenStreetMap data.

Data sources
Base map: OpenStreetMap
Boundaries: UN OCHA


 Wards

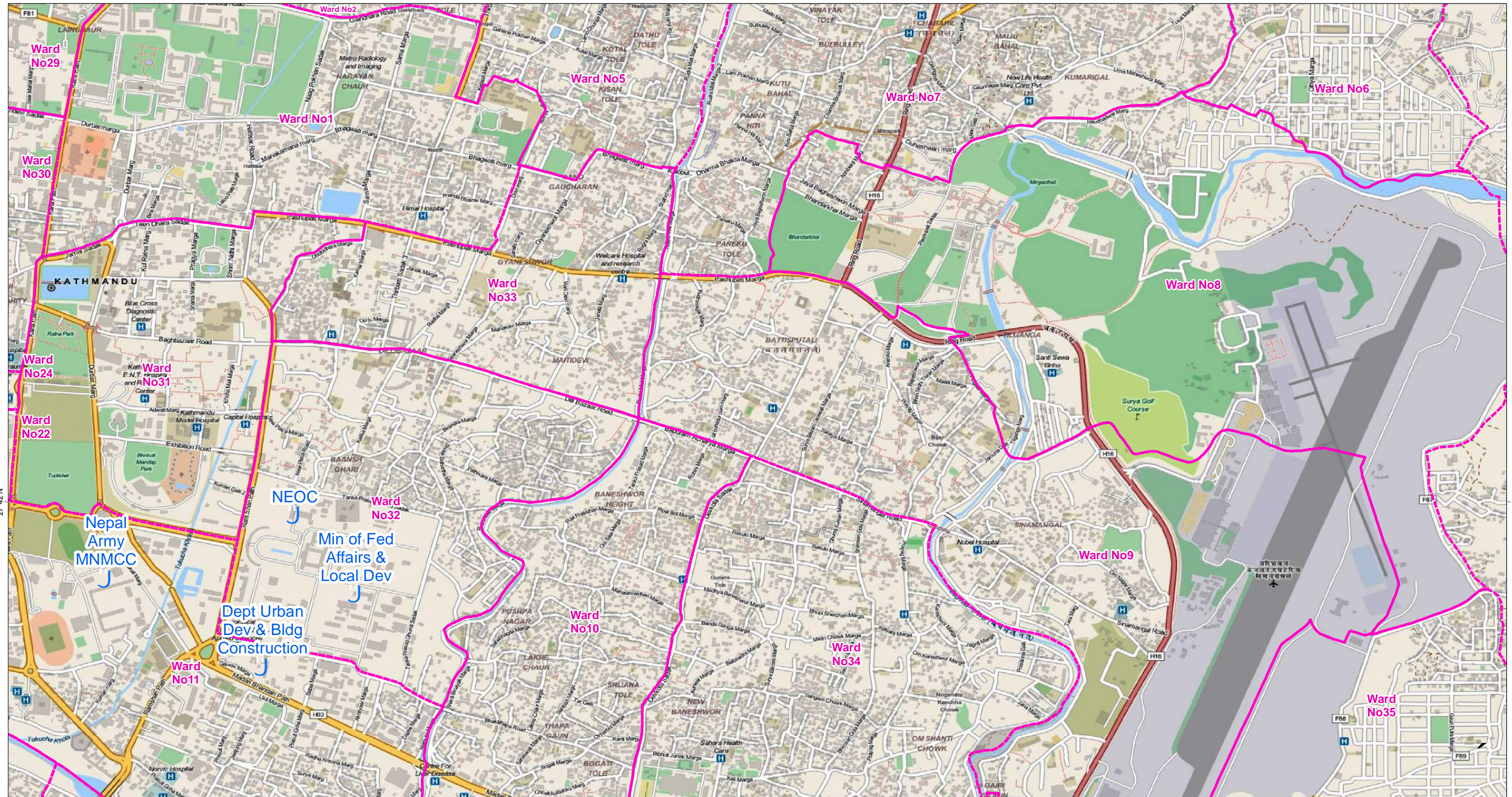
Created 9 May 2015 / 09:00 UTC+ 05:45
Map Document MA129_V01_CityMap_mapbook_A3
Projection / Datum WGS 1984
Glide Number EQ-2015-000048-NPL

Produced by MapAction
 nepal@mapaction.org
 www.mapaction.org

The depiction and use of boundaries, names and associated data shown here do not imply endorsement or acceptance by MapAction.

Supported by 

85°18'E

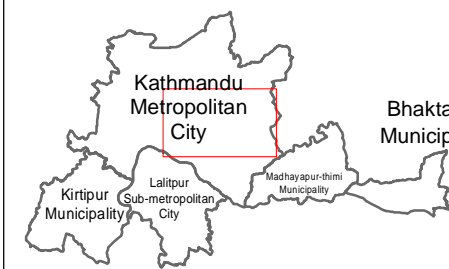


**Nepal earthquake:
City map series
Eastern Kathmandu**

One of a series of maps showing Kathmandu and surrounding urban areas, based on OpenStreetMap data.

 Wards

Data sources
Base map: OpenStreetMap
Boundaries: UN OCHA

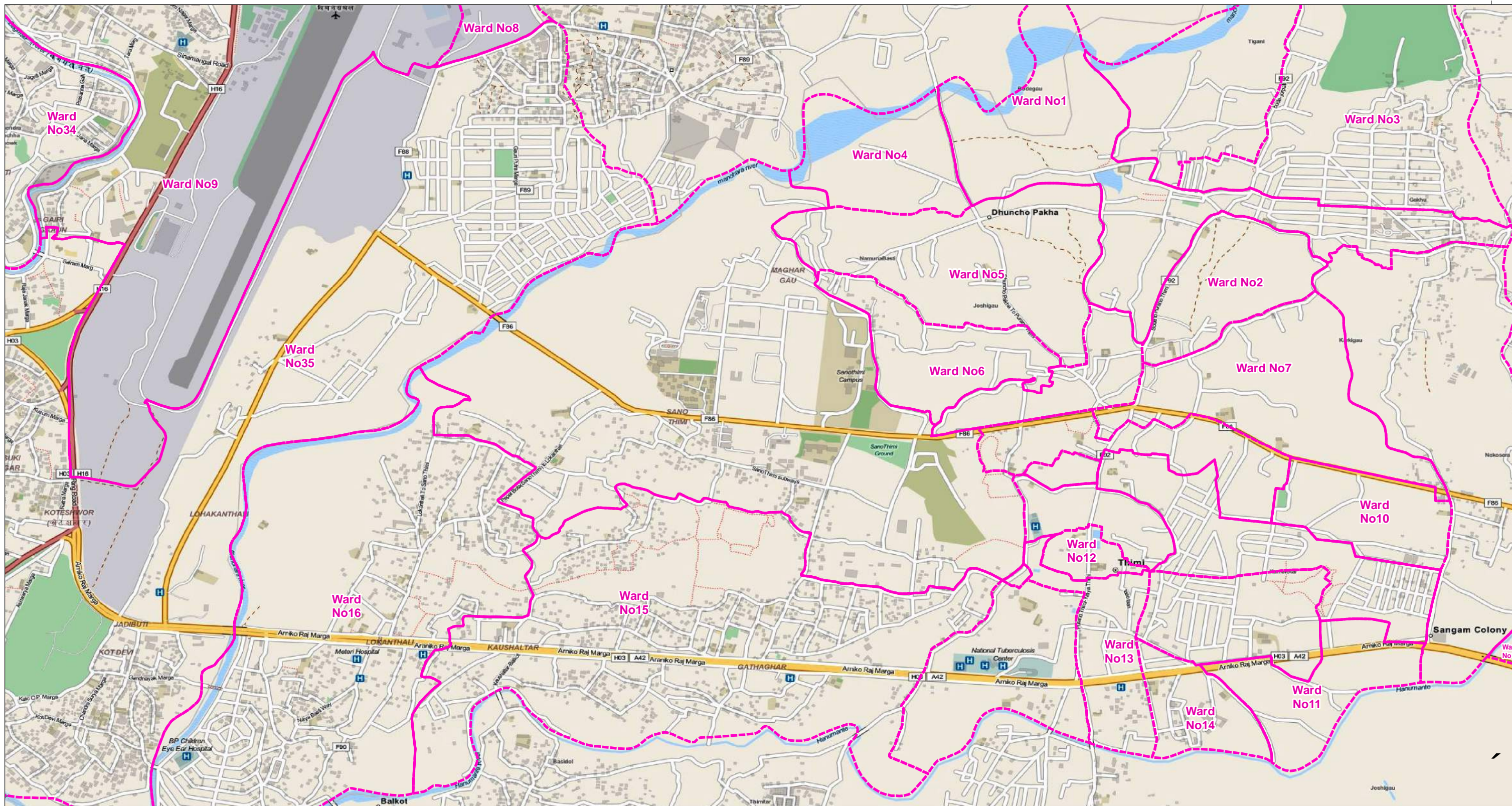


0 0.15 0.3 0.45 0.6
kilometres
1: 20,000 (At A3)

Created 9 May 2015 / 09:00 UTC+ 05:45
Map Document MA129_V01_CityMap_mapbook_A3
Projection / Datum WGS 1984
Glide Number EQ-2015-000048-NPL

Produced by MapAction
nepal@mapaction.org
www.mapaction.org
The depiction and use of boundaries, names and associated data shown here do not imply endorsement or acceptance by MapAction.





85°24'E



MapAction

**Nepal earthquake:
City map series**

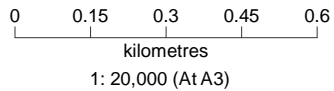
Madhayapur-thimi

One of a series of maps showing Kathmandu and surrounding urban areas, based on OpenStreetMap data.

Data sources
Base map: OpenStreetMap
Boundaries: UN OCHA



Wards





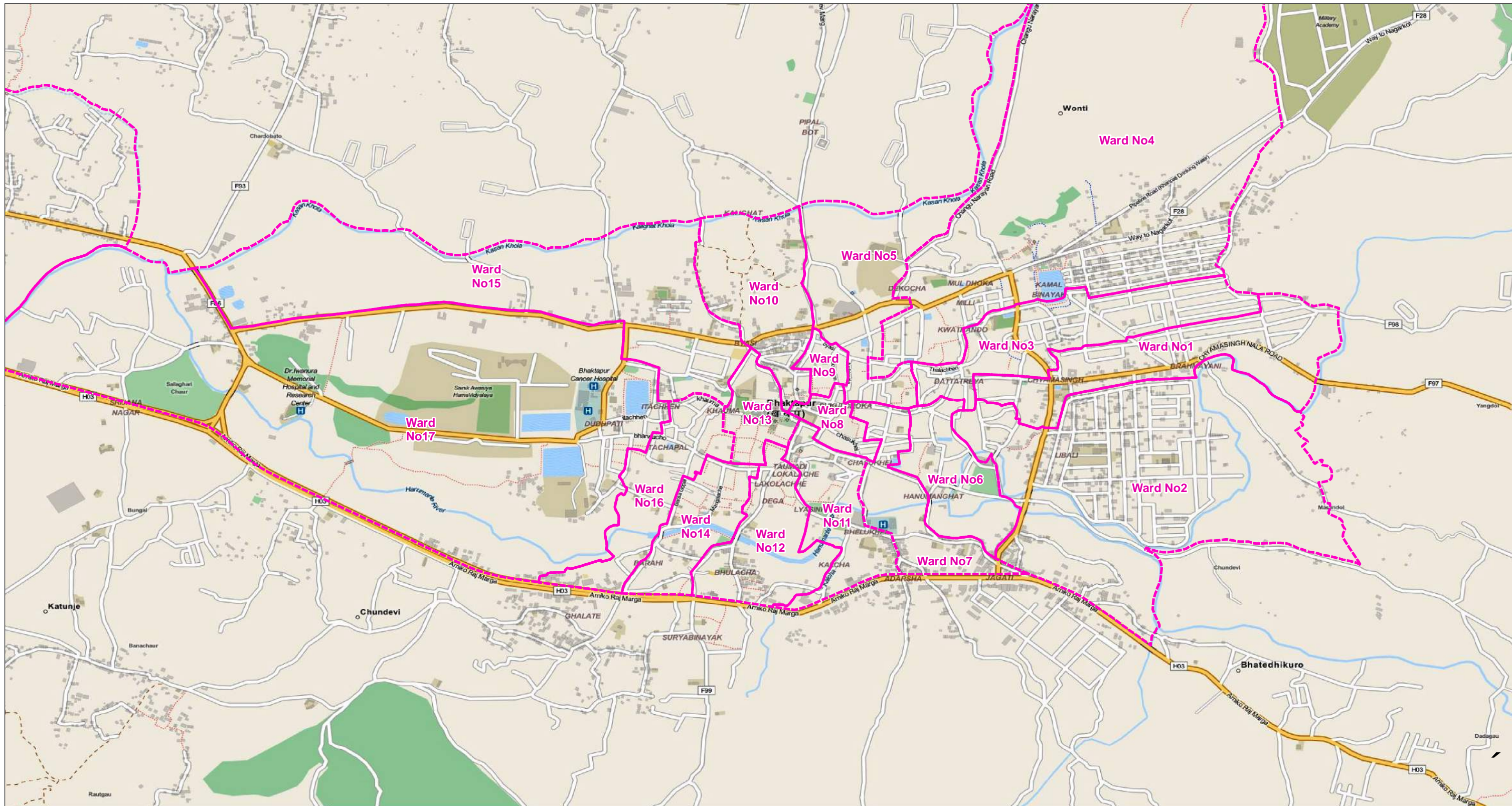
0 0.15 0.3 0.45 0.6
kilometres
1: 20,000 (At A3)

Created 9 May 2015 / 09:00 UTC+ 05:45
Map Document MA129_V01_CityMap_mapbook_A3
Projection / Datum WGS 1984
Glide Number EQ-2015-000048-NPL

Produced by MapAction
 nepal@mapaction.org
 www.mapaction.org

The depiction and use of boundaries, names and associated data shown here do not imply endorsement or acceptance by MapAction.

Supported by 




MapAction

Nepal earthquake: City map series

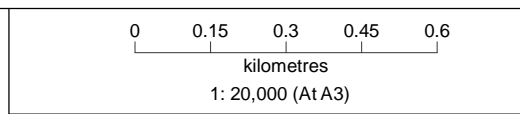
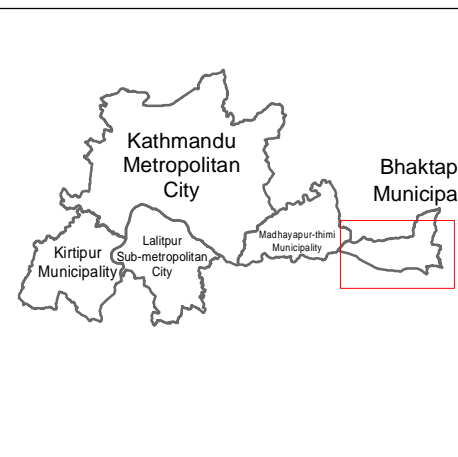
Bahktapur

One of a series of maps showing Kathmandu and surrounding urban areas, based on OpenStreetMap data.

Data sources
 Base map: OpenStreetMap
 Boundaries: UN OCHA



Wards

Created 9 May 2015 / 09:00 UTC+ 05:45
Map Document MA129_V01_CityMap_mapbook_A3
Projection / Datum WGS 1984
Glide Number EQ-2015-000048-NPL

Produced by MapAction
 nepal@mapaction.org
 www.mapaction.org

The depiction and use of boundaries, names and associated data shown here do not imply endorsement or acceptance by MapAction.

Supported by 