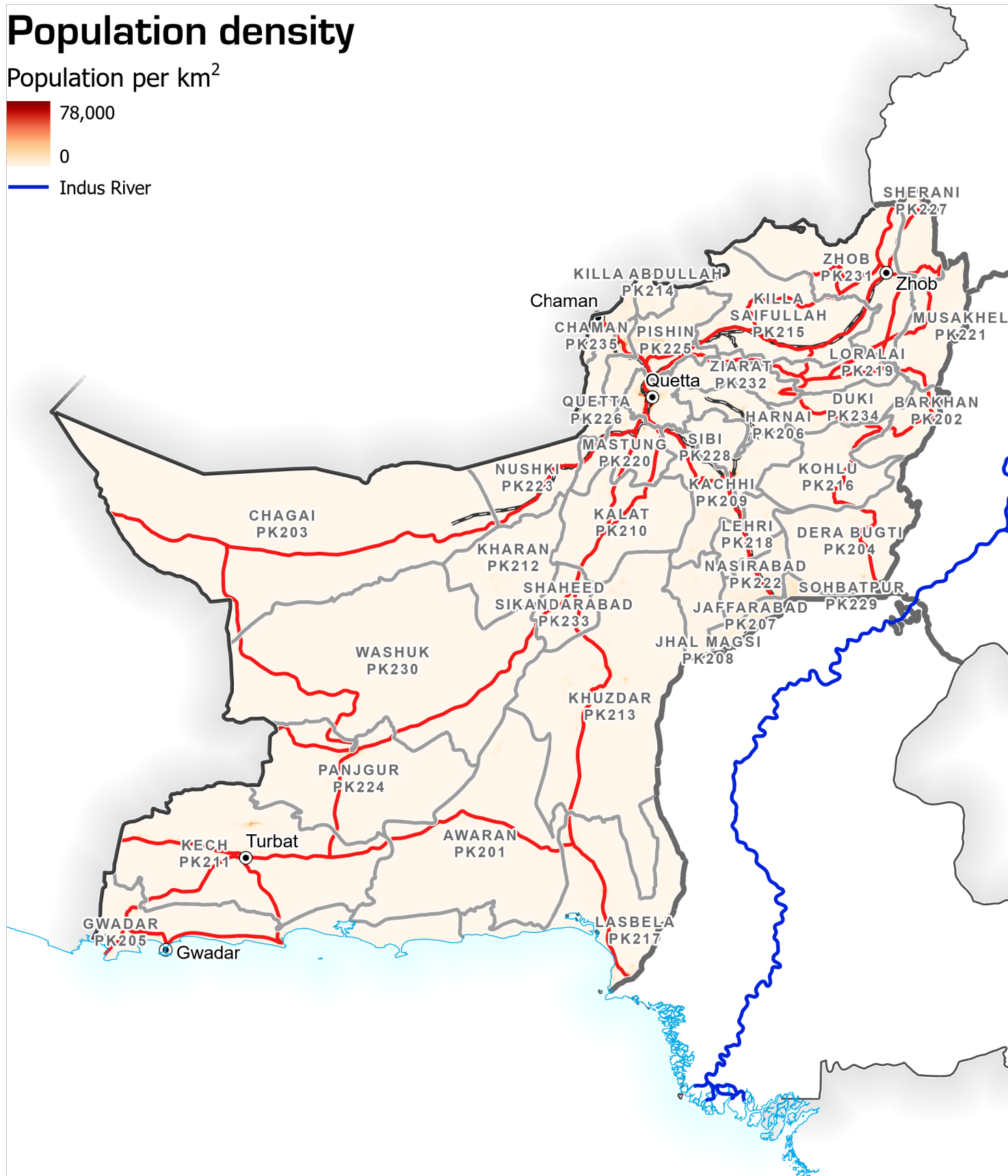
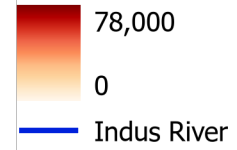




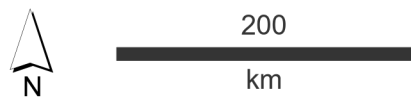
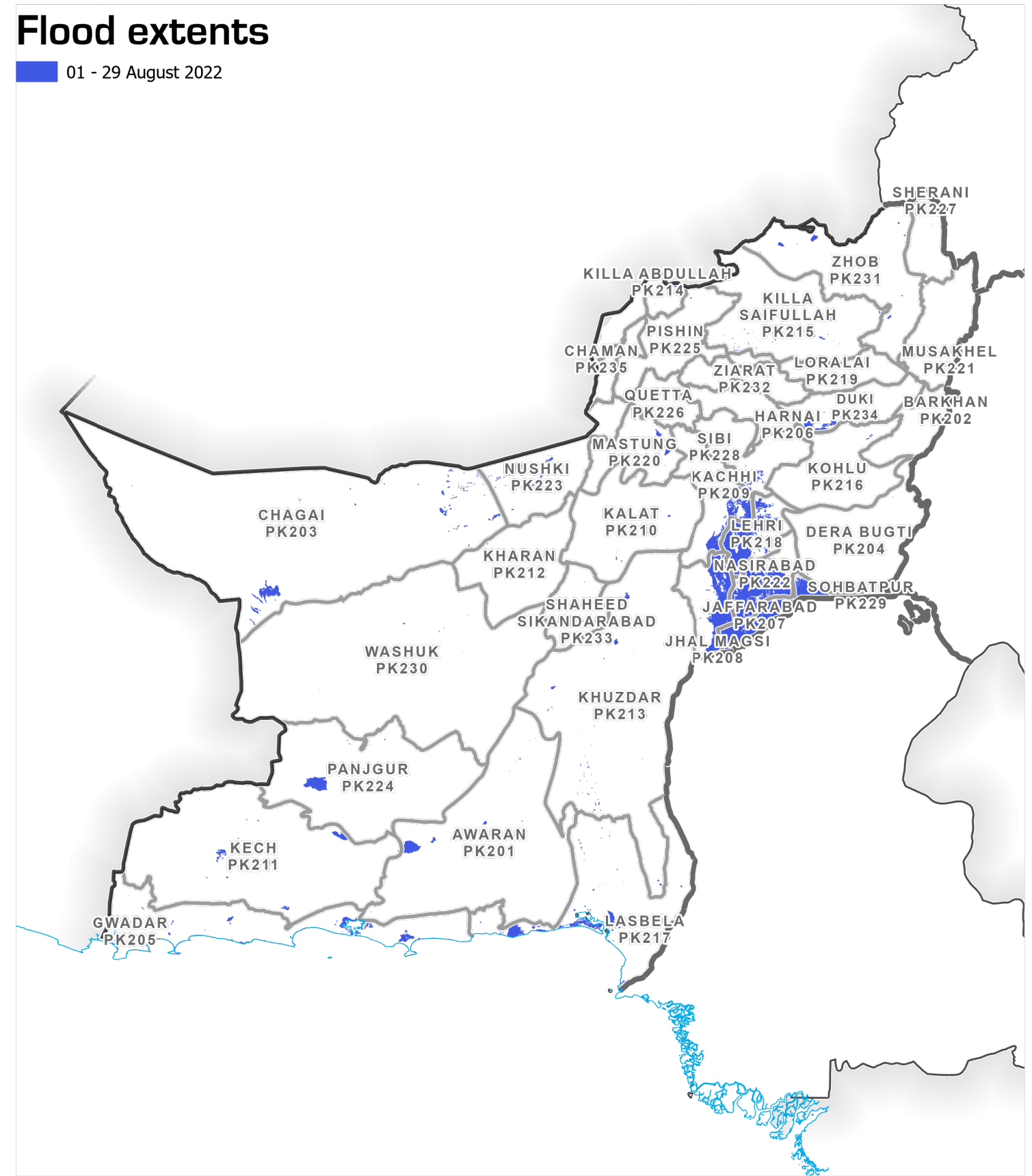
Population density

Population per km²



Flood extents

01 - 29 August 2022



- | | | |
|--------------------|------------------|-------------------------|
| Settlement | Transport | Boundaries |
| ★ National capital | — Railway | — International |
| ○ City | — Primary road | - - - Disputed boundary |
| | | — Province |
| | | — Districts |

Data Sources
Pakistan Census Office, Natural Earth, GADM, Worldpop, UNOSAT

Map created by MapAction (08/09/2022)

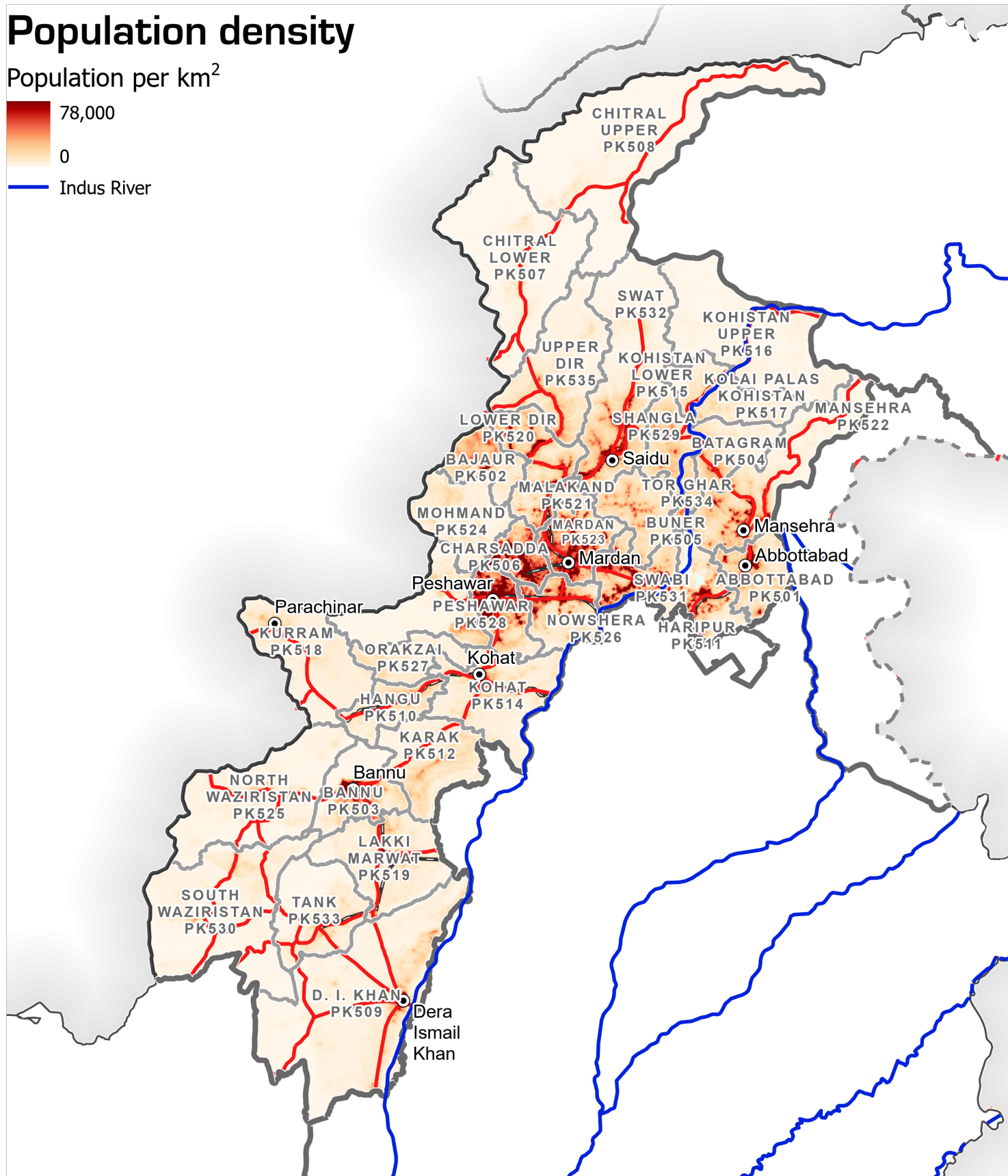
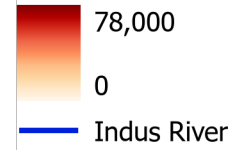
Flood extents for 01 - 29 August as detected by UNOSAT and estimates of population affected based upon Worldpop data for 2020

Dotted line represents approximately the Line of Control in Jammu and Kashmir agreed upon by India and Pakistan. The final status of Jammu and Kashmir has not yet been agreed upon by the parties.



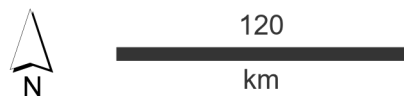
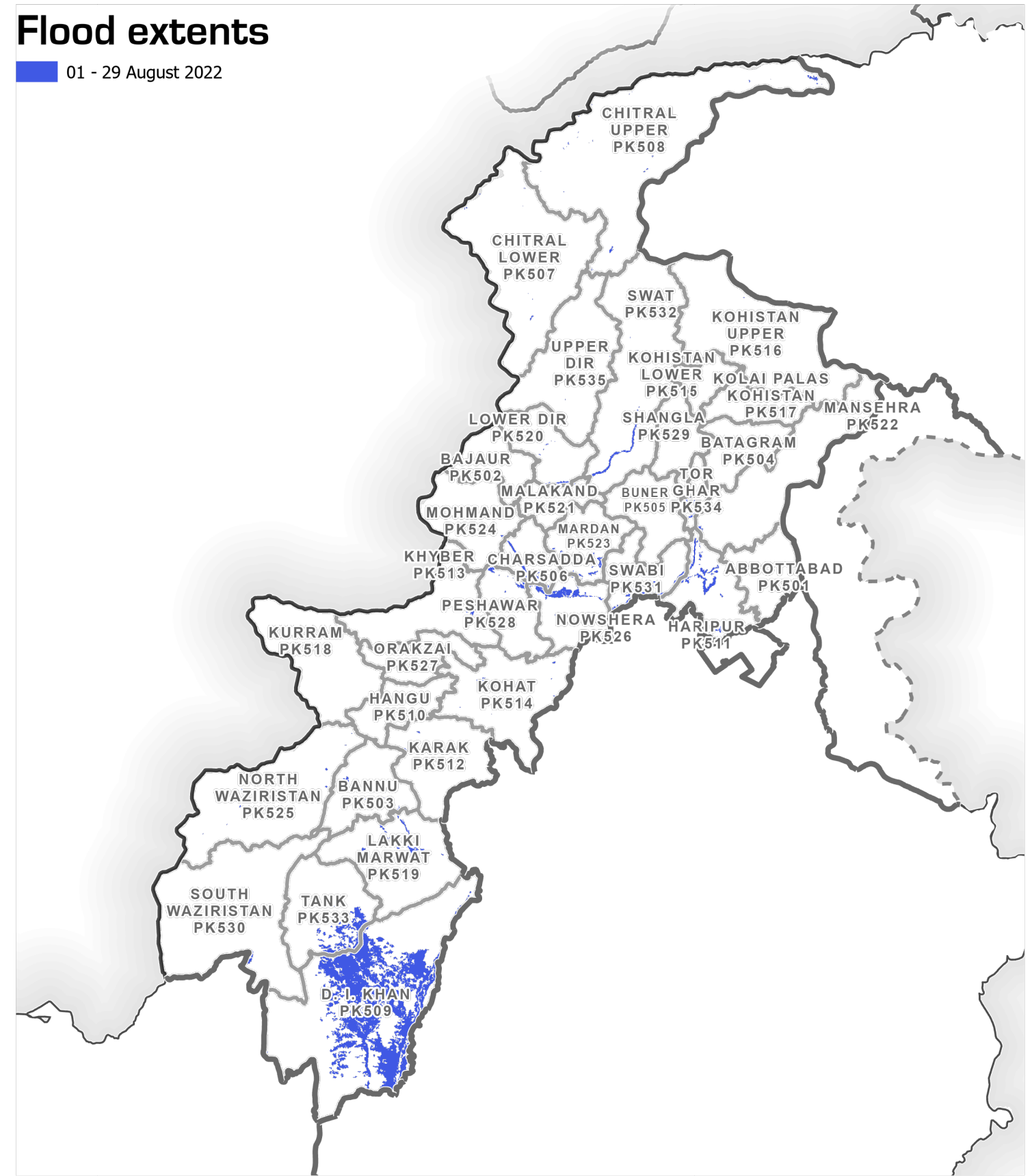
Population density

Population per km²



Flood extents

01 - 29 August 2022



- | | | |
|--------------------|------------------|-------------------------|
| Settlement | Transport | Boundaries |
| ★ National capital | — Railway | — International |
| ○ City | — Primary road | - - - Disputed boundary |
| | | — Province |
| | | — Districts |

Data Sources

Pakistan Census Office, Natural Earth, GADM, Worldpop, UNOSAT

Map created by MapAction (08/09/2022)

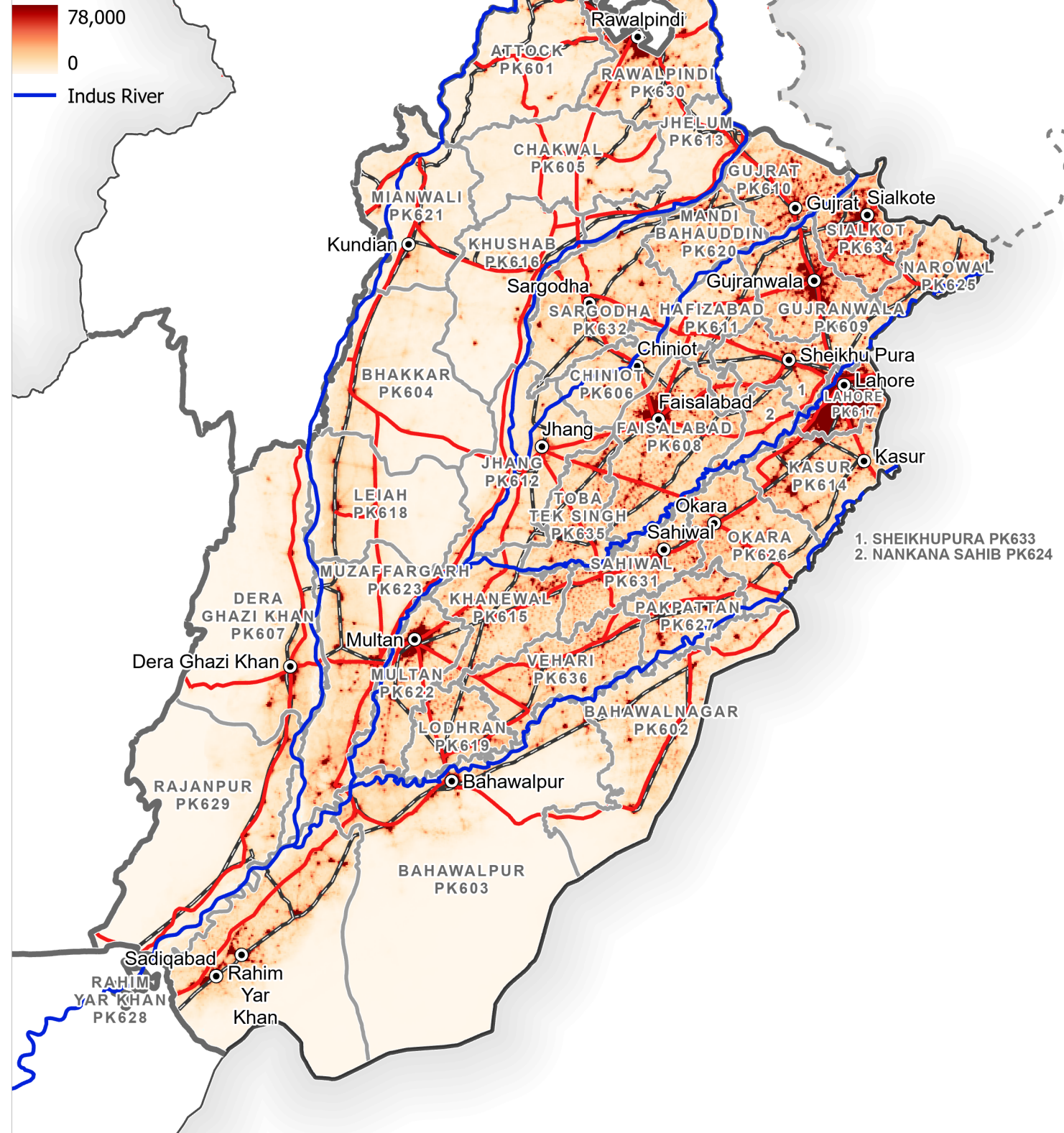
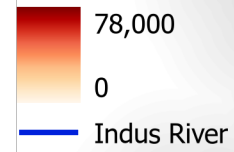
Dotted line represents approximately the Line of Control in Jammu and Kashmir agreed upon by India and Pakistan. The final status of Jammu and Kashmir has not yet been agreed upon by the parties.

Flood extents for 01 - 29 August as detected by UNOSAT and estimates of population affected based upon Worldpop data for 2020



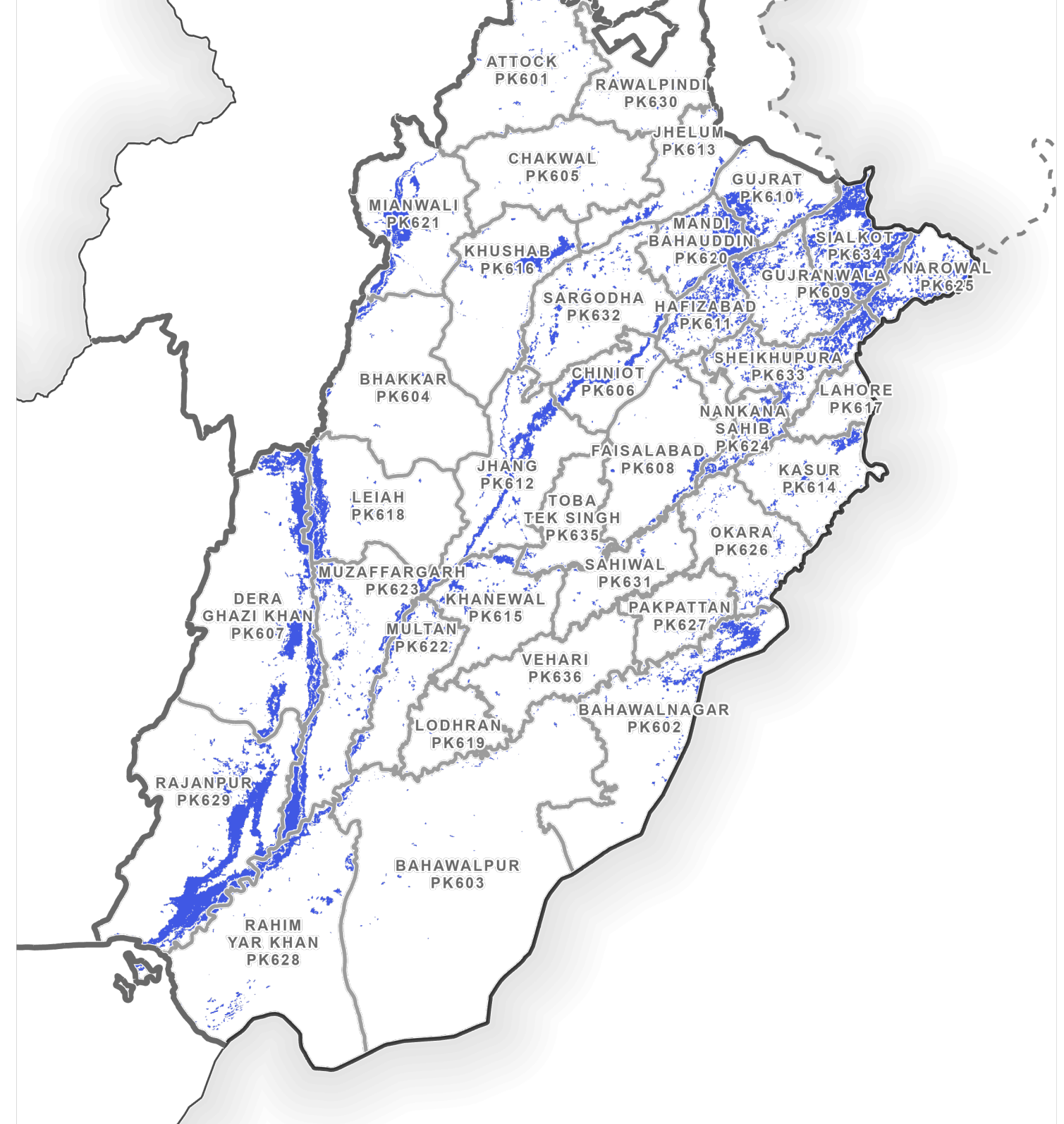
Population density

Population per km²



Flood extents

01 - 29 August 2022



- | | | |
|--------------------|------------------|-------------------------|
| Settlement | Transport | Boundaries |
| ★ National capital | — Railway | — International |
| ○ City | — Primary road | - - - Disputed boundary |
| | | — Province |
| | | — Districts |

Data Sources

Pakistan Census Office, Natural Earth, GADM, Worldpop, UNOSAT

Map created by MapAction (08/09/2022)

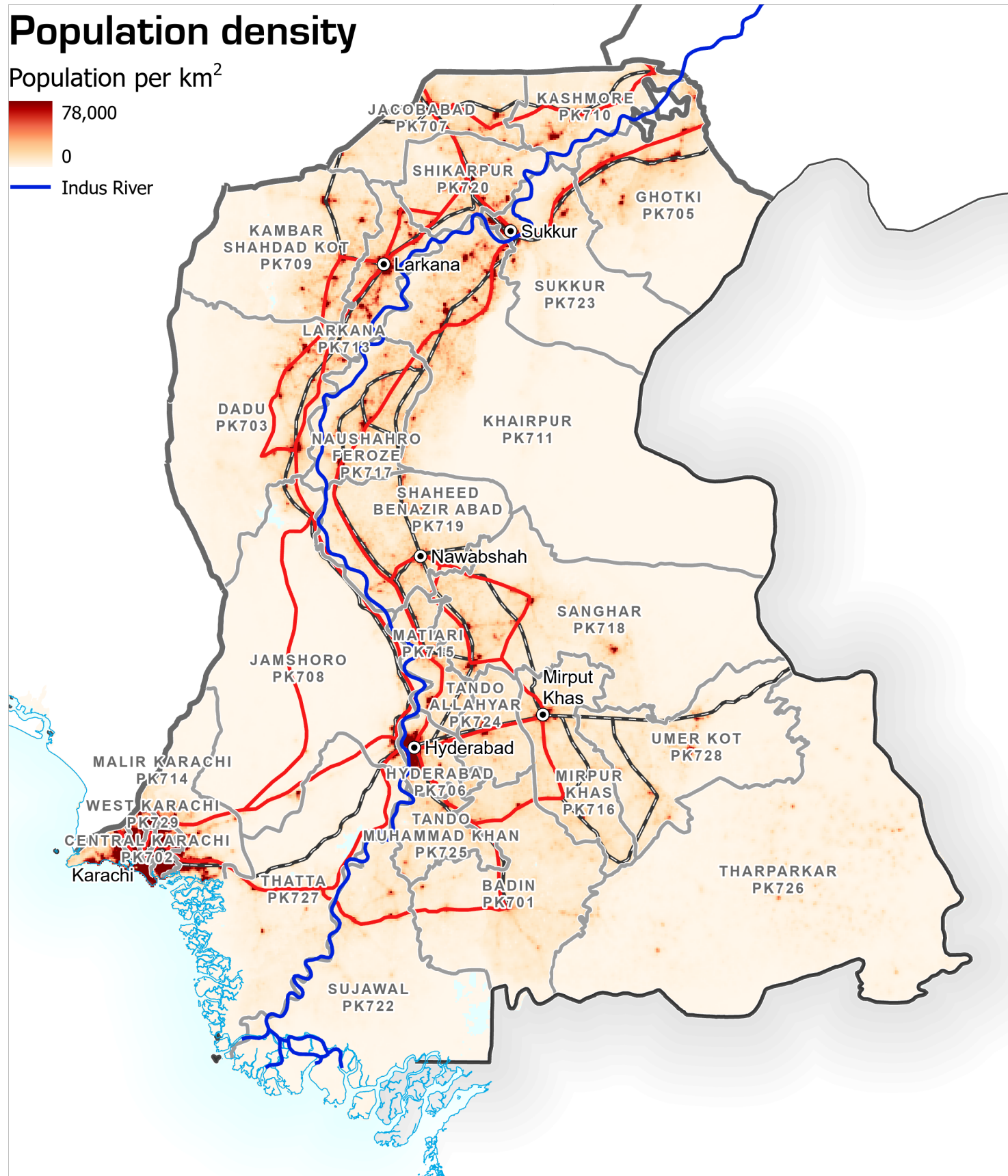
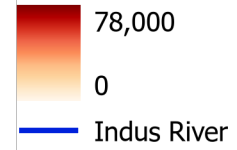
Flood extents for 01 - 29 August as detected by UNOSAT and estimates of population affected based upon Worldpop data for 2020

Dotted line represents approximately the Line of Control in Jammu and Kashmir agreed upon by India and Pakistan. The final status of Jammu and Kashmir has not yet been agreed upon by the parties.



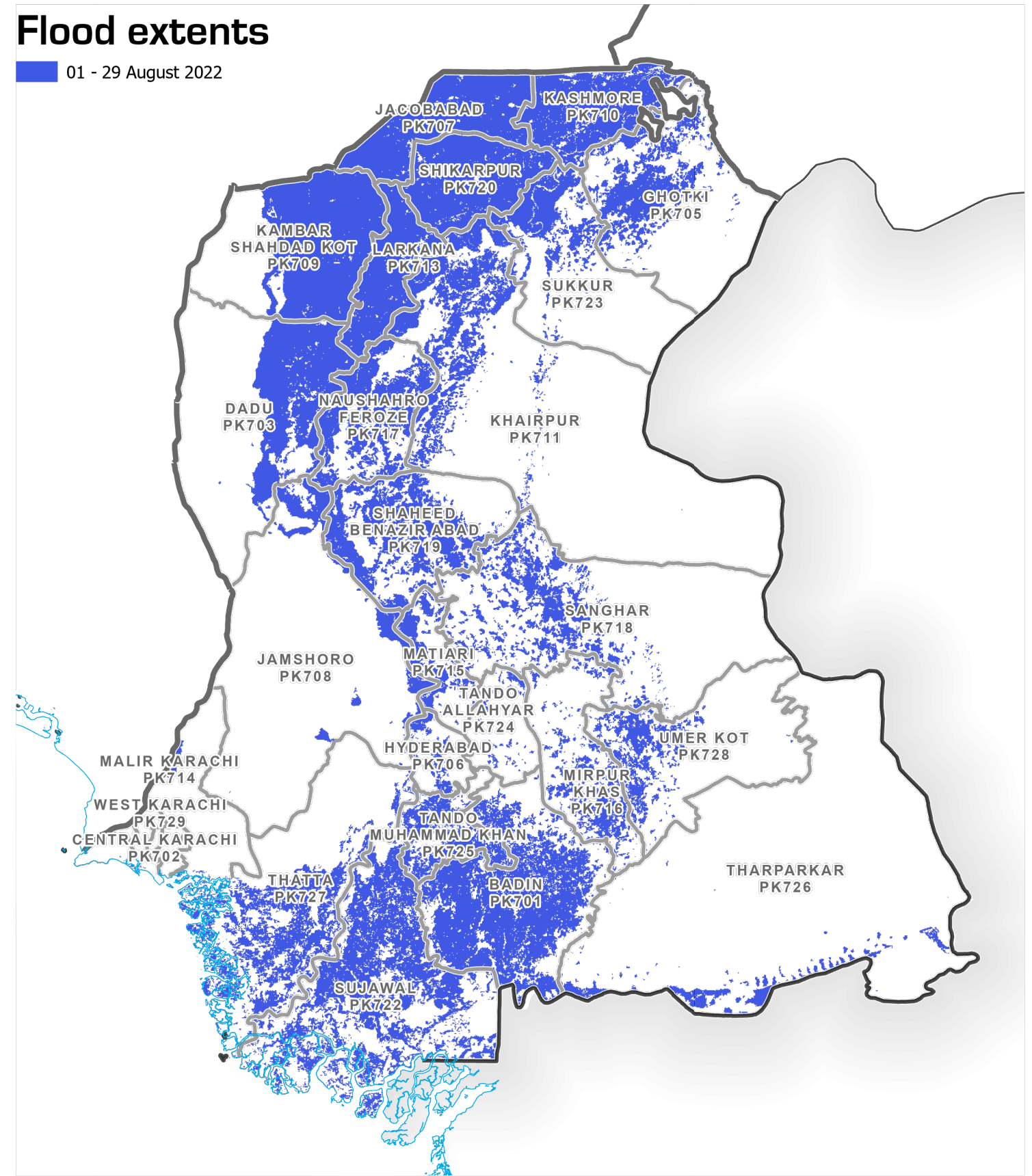
Population density

Population per km²



Flood extents

01 - 29 August 2022



- | | | |
|--------------------|------------------|-------------------------|
| Settlement | Transport | Boundaries |
| ★ National capital | — Railway | — International |
| ○ City | — Primary road | - - - Disputed boundary |
| | | — Province |
| | | — Districts |

Data Sources
Pakistan Census Office, Natural Earth, GADM, Worldpop, UNOSAT

Map created by MapAction (08/09/2022)

Dotted line represents approximately the Line of Control in Jammu and Kashmir agreed upon by India and Pakistan. The final status of Jammu and Kashmir has not yet been agreed upon by the parties.

Flood extents for 01 - 29 August as detected by UNOSAT and estimates of population affected based upon Worldpop data for 2020