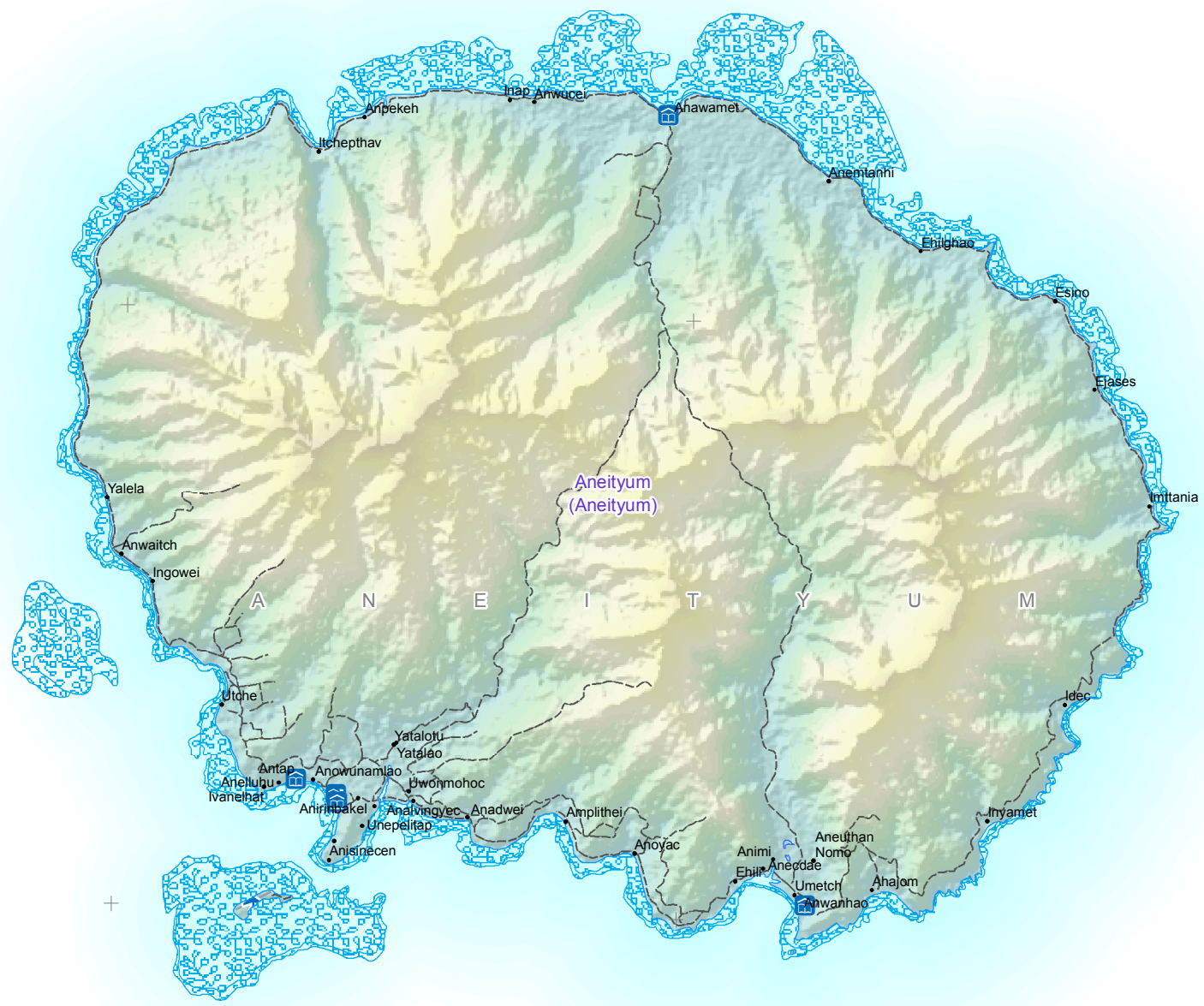


20°5'0"S  
20°10'0"S  
20°15'0"S  
20°20'0"S



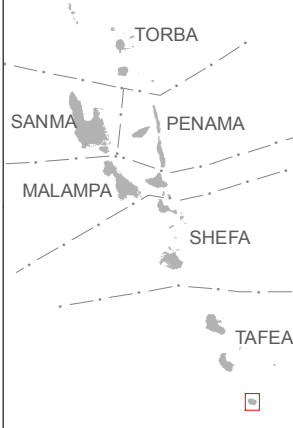
169°45'0"E 169°50'0"E 169°55'0"E



**Reference map of Vanuatu**

Tafea - 09

Map Sheet 53



**Settlements**

- ★ PORT VILA
- Town
- Village

**Transport**

- ⚓ Seaport
- ✈ Airport
- Road
- Track
- - - Trail
- - - Path

**Borders**

- PROVINCE
- ISLAND
- Area Council

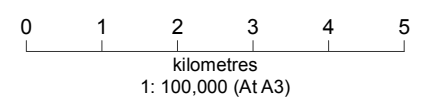
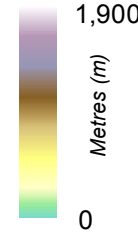
**Points of interest**

- 📶 Communications tower
- 🏫 Education facility
- 🏥 Hospital
- 🏠 Health Center
- 🏪 Dispensary

**Physical**

- 🌊 River
- 🌊 Lake
- 🌊 Reef

**Elevation**



**Data sources**  
Save the Children Vanuatu, PCRAFI, National Statistics Office, Land Department, ASTER

**Created** 3 May 2017 / 12:00  
**Map Document** MA002\_Vanuatu\_100k\_Ref  
**GLIDE Number** TC-2017-000045-VUT  
**Projection / Datum** WGS 1984 UTM Zone 58S / WGS 1984

Produced by MapAction - mapaction.org - vanuatu@mapaction.org  
*The depiction and use of boundaries, names and associated data shown here do not imply endorsement or acceptance by MapAction.*