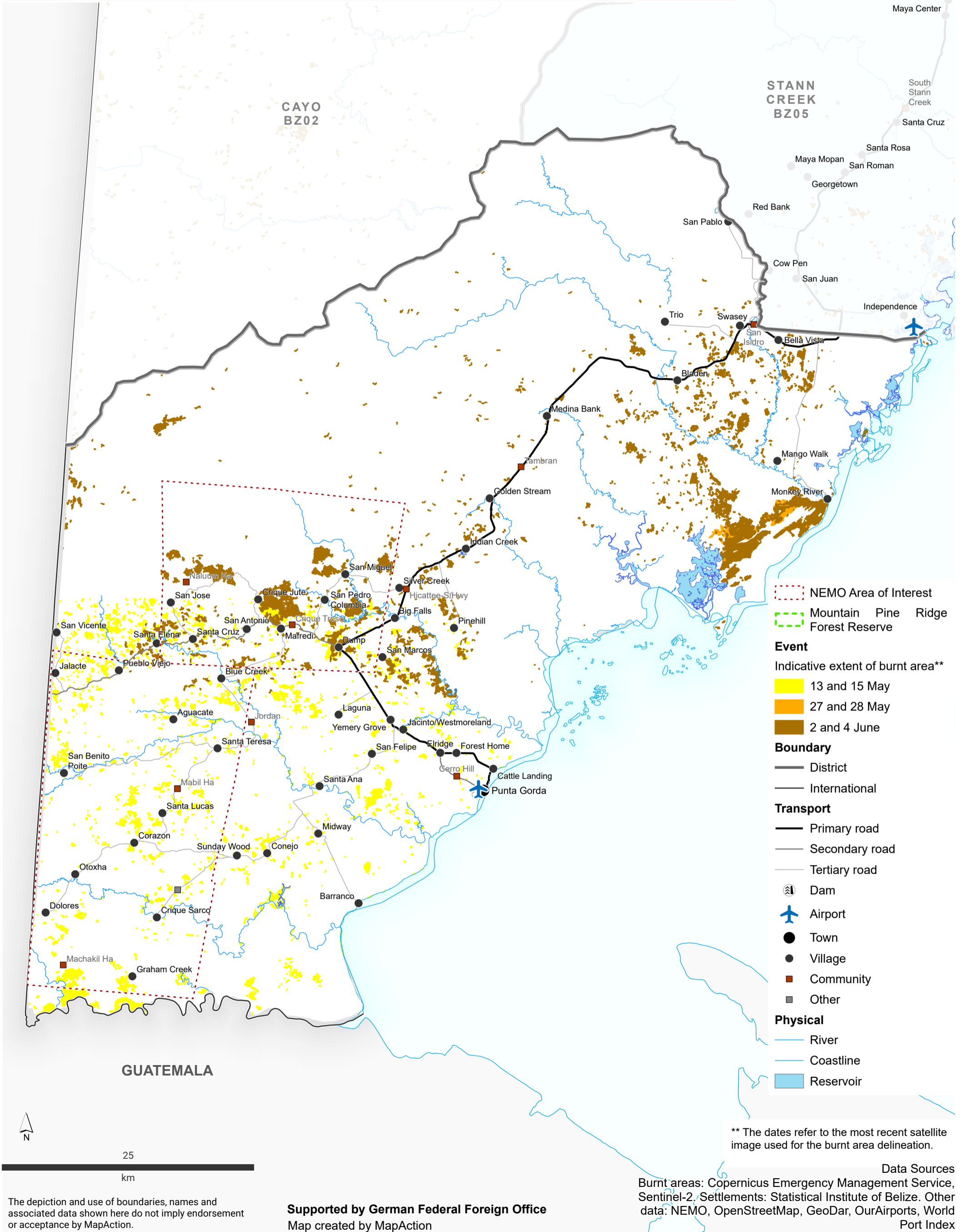


The map shows the INDICATIVE extent of wildfires, derived from Copernicus EMSR726 and Sentinel-2 satellite images. Due to cloud cover on the used satellite images, the map DOES NOT show the full extent of wildfires. The map should only be used as an indicator of where wildfires are likely to have happened. The indicative extent of burnt areas is mosaiced from images of different dates from 13/05/2024 onwards. **Map last updated on 11/06/2024.**



** The dates refer to the most recent satellite image used for the burnt area delineation.

Data Sources
 Burnt areas: Copernicus Emergency Management Service, Sentinel-2, Settlements: Statistical Institute of Belize. Other data: NEMO, OpenStreetMap, GeoDar, OurAirports, World Port Index