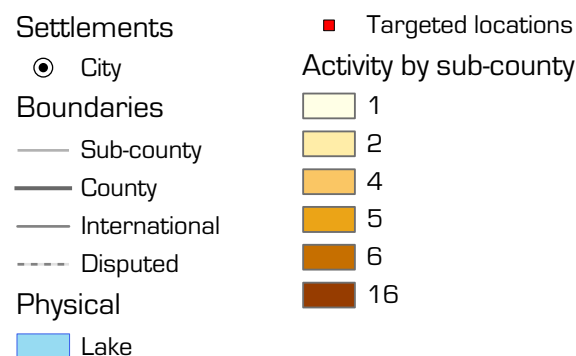


The map shows the 3w (who, what, where) response activity by sub-county for the planned and ongoing multi-purpose cash program implemented by the ASAL Humanitarian Network (AHN). This is in response to the 2023 drought in the arid and semi-arid lands (ASAL) of Kenya. Locations are shown if they have an implementation program. Not all partners have reported activities.

Note: Only a snapshot of the full AHN response is shown.



Data Sources
Natural Earth, IECB, UN, GADM, AHN

Created 29 August 2023 / 12:00 UTC+03:00

Projection & Datum WGS_1984_UTM_Zone_37N / WGS 1984

GLIDE Number DR-2022-000322-KEN

Produced by MapAction
<https://mapaction.org>
info@mapaction.org

Supported by the Bureau of Humanitarian Affairs.

The boundaries and names shown and the designations used on this map do not imply official endorsement or acceptance by the United Nations or MapAction.

