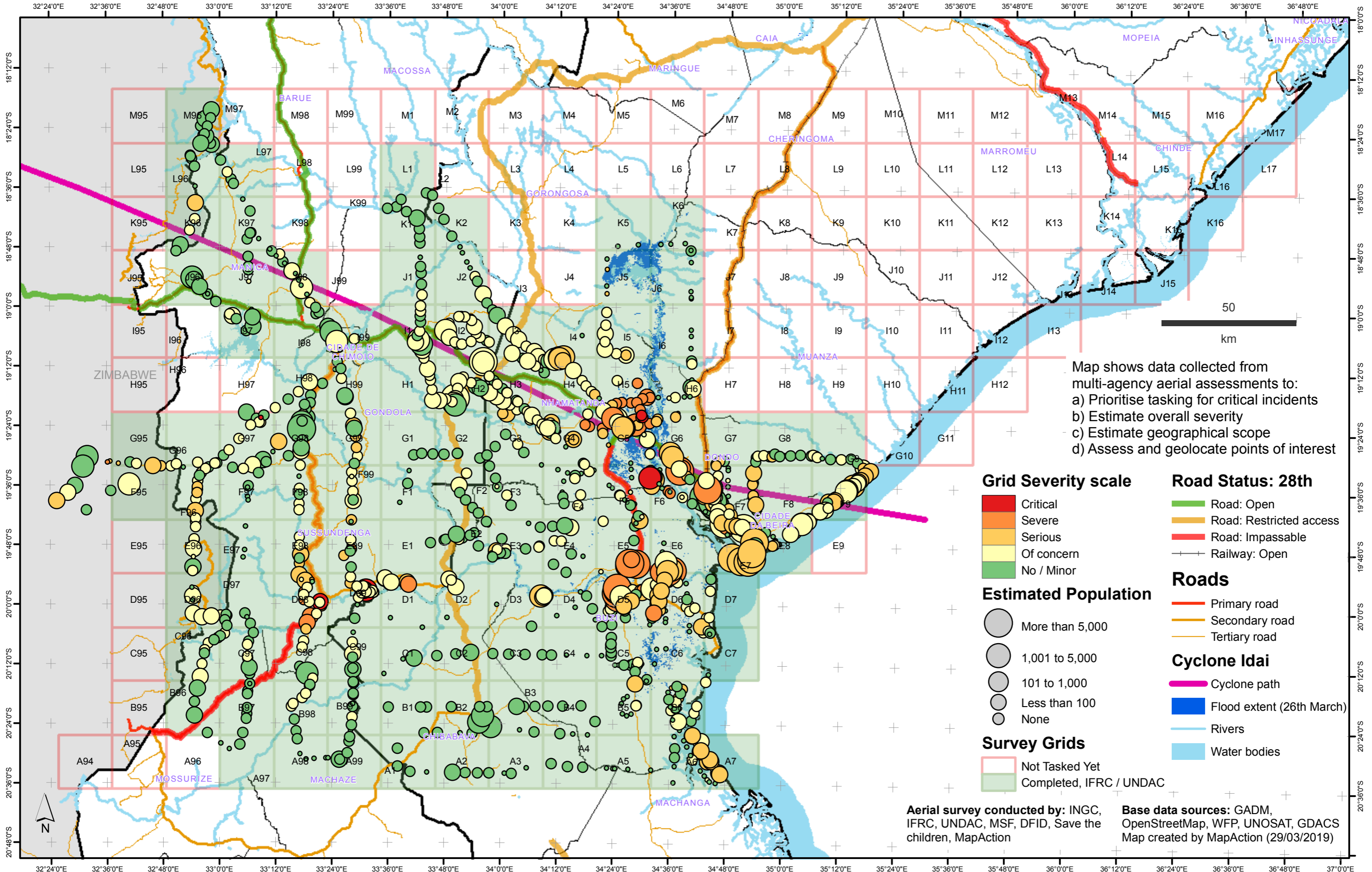
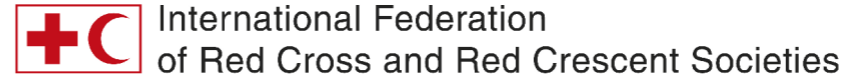


Mozambique: Cyclone Idai - results and analysis of aerial survey as of 29th March 2019

MA028 v11



Map shows data collected from multi-agency aerial assessments to:

- Prioritise tasking for critical incidents
- Estimate overall severity
- Estimate geographical scope
- Assess and geolocate points of interest

<p>Grid Severity scale</p> <ul style="list-style-type: none"> Critical Severe Serious Of concern No / Minor 	<p>Road Status: 28th</p> <ul style="list-style-type: none"> Road: Open Road: Restricted access Road: Impassable Railway: Open
<p>Estimated Population</p> <ul style="list-style-type: none"> More than 5,000 1,001 to 5,000 101 to 1,000 Less than 100 None 	<p>Roads</p> <ul style="list-style-type: none"> Primary road Secondary road Tertiary road
<p>Survey Grids</p> <ul style="list-style-type: none"> Not Tasked Yet Completed, IFRC / UNDAC 	<p>Cyclone Idai</p> <ul style="list-style-type: none"> Cyclone path Flood extent (26th March) Rivers Water bodies

Aerial survey conducted by: INGC, IFRC, UNDAC, MSF, DFID, Save the children, MapAction

Base data sources: GADM, OpenStreetMap, WFP, UNOSAT, GDACS

Map created by MapAction (29/03/2019)