



### Sierra Leone Ebola Outbreak: Location & Status of Ebola Treatment Units and Cumulative Case Totals for each District (as of 16 Nov 2014)

Map shows the location and status of the known Ebola Treatment Units (as of 15/11/2014). Cumulative confirmed case totals and daily case movement/number (as of 15/11/2014) are shown for each district, with 7/14/21 day totals below.

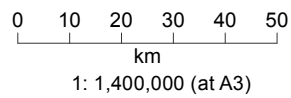
**Status, LabPresent**

- Open, No Lab
- Open, With Lab
- Planned

**Cumulative Confirmed Cases (District)**

- <50
  - 51-200
  - 201-500
  - 501-750
  - >751
- Please note the change in Classification ranges from previous days reflecting the higher case numbers

- Roads**
- Primary
  - Secondary
- Borders**
- National
  - Province
  - District



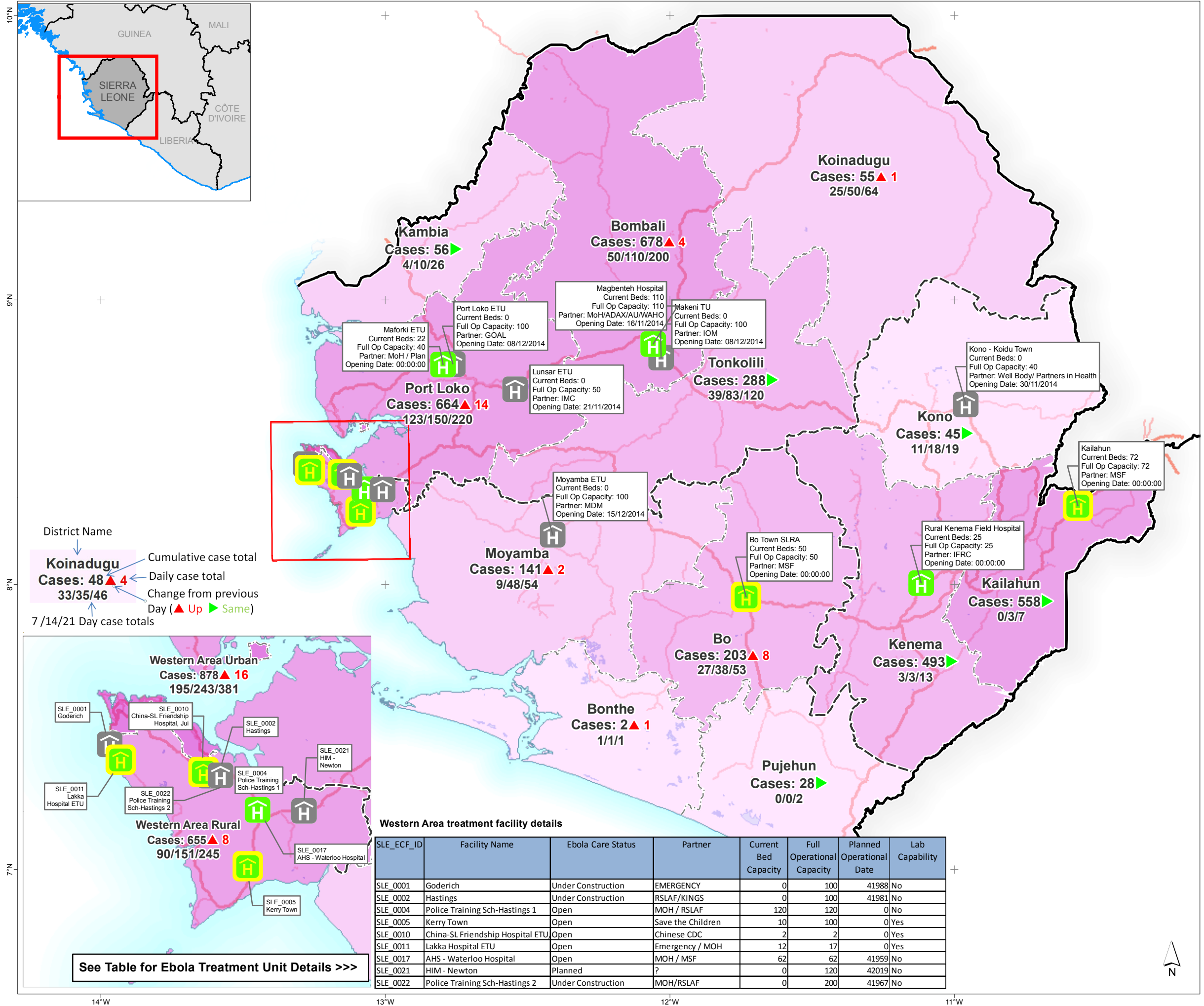
**Data sources**  
OpenStreetMap, COD-FOD Registry, Ministry of Health, WHO, NERC briefings

**Created** 17 Nov 2014 / 12:00 UTC±00:00  
**Map Document** MA009\_EbolaCareFacilities\_Case\_A3\_v16  
**Projection / Datum** WGS 1984 UTM Zone 29N  
**Glide Number** EP-2014-000039-SLE

Produced by MapAction  
 www.mapaction.org  
 sierraleone@mapaction.org



The depiction and use of boundaries, names and associated data shown here do not imply endorsement or acceptance by MapAction.



**Western Area treatment facility details**

SLE_ECF_ID	Facility Name	Ebola Care Status	Partner	Current Bed Capacity	Full Operational Capacity	Planned Operational Date	Lab Capability
SLE_0001	Goderich	Under Construction	EMERGENCY	0	100	41988	No
SLE_0002	Hastings	Under Construction	RSLAF/KINGS	0	100	41981	No
SLE_0004	Police Training Sch-Hastings 1	Open	MOH / RSLAF	120	120	0	No
SLE_0005	Kerry Town	Open	Save the Children	10	100	0	Yes
SLE_0010	China-SL Friendship Hospital ETU	Open	Chinese CDC	2	2	0	Yes
SLE_0011	Lakka Hospital ETU	Open	Emergency / MOH	12	17	0	Yes
SLE_0017	AHS - Waterloo Hospital	Open	MOH / MSF	62	62	41959	No
SLE_0021	HIM - Newton	Planned	?	0	120	42019	No
SLE_0022	Police Training Sch-Hastings 2	Under Construction	MOH/RSLAF	0	200	41967	No

See Table for Ebola Treatment Unit Details >>>