



MapAction

Sierra Leone Ebola Outbreak: Location & Status of Ebola Treatment Units and Cumulative Case Totals for each District (as of 5th Nov '14)

Map shows the location and status of the known Ebola Treatment Units (as of 05/11/2014) and cumulative confirmed case totals for each district as of 5th Nov 2014

Legend

ETU Status, Lab Status

- Open, No Lab
- Open, With Lab
- Planned

Cumulative Confirmed Cases (District)

- <50
- 51 - 100
- 101 - 200
- 200 - 500
- >500

Borders

- National
- Province
- District

Roads

- Primary
- Secondary

0 10 20 30 40 50 km
1: 1,400,000 (at A3)

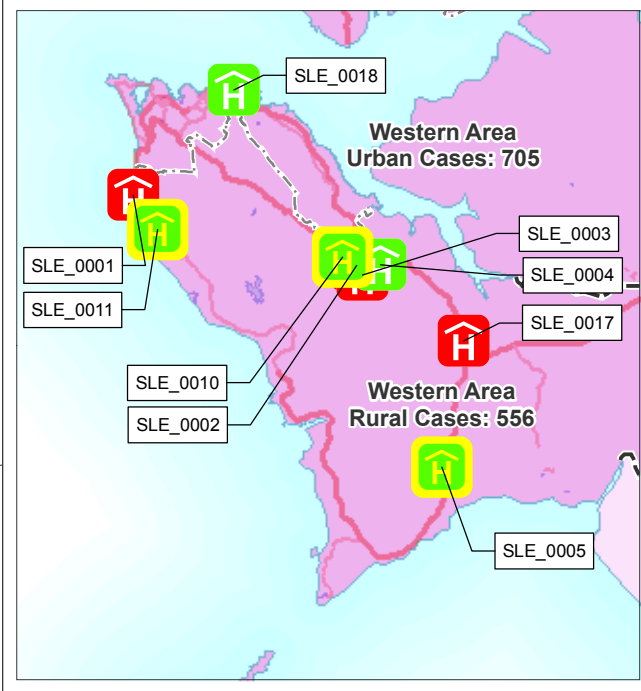
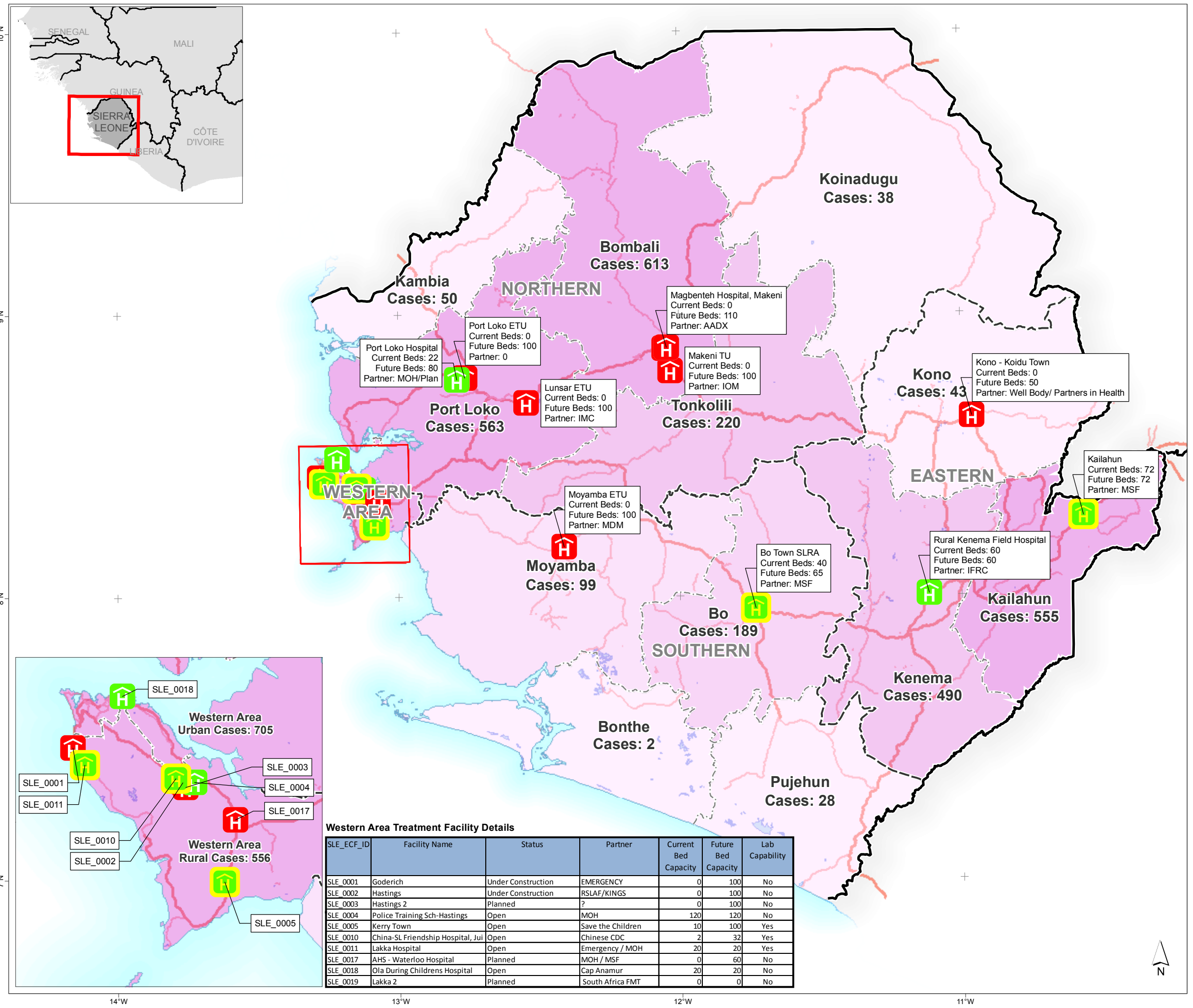
Data sources
OpenStreetMap, COD-FOD Registry, Ministry of Health, WHO, NERC briefings

Created 6 Nov 2014 / 16:00 UTC±00:00
Map Document MA009_EbolaCareFacilities_Case_A3_v4
Projection / Datum WGS 1984 UTM Zone 29N
Glide Number EP-2014-000039-SLE

Produced by MapAction
www.mapaction.org
sierraleone@mapaction.org



The depiction and use of boundaries, names and associated data shown here do not imply endorsement or acceptance by MapAction.



Western Area Treatment Facility Details

SLE_ECF_ID	Facility Name	Status	Partner	Current Bed Capacity	Future Bed Capacity	Lab Capability
SLE_0001	Goderich	Under Construction	EMERGENCY	0	100	No
SLE_0002	Hastings	Under Construction	RSLAF/KINGS	0	100	No
SLE_0003	Hastings 2	Planned	?	0	100	No
SLE_0004	Police Training Sch-Hastings	Open	MOH	120	120	No
SLE_0005	Kerry Town	Open	Save the Children	10	100	Yes
SLE_0010	China-SL Friendship Hospital, Jui	Open	Chinese CDC	2	32	Yes
SLE_0011	Lakka Hospital	Open	Emergency / MOH	20	20	Yes
SLE_0017	AHS - Waterloo Hospital	Planned	MOH / MSF	0	60	No
SLE_0018	Ola Daring Childrens Hospital	Open	Cap Anamur	20	20	No
SLE_0019	Lakka 2	Planned	South Africa FMT	0	0	No